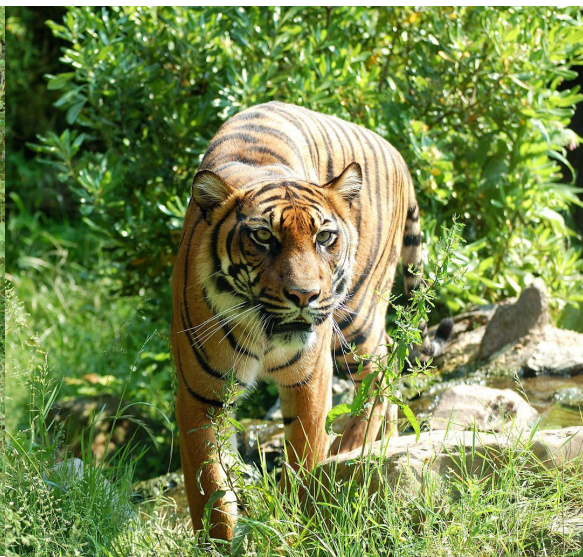
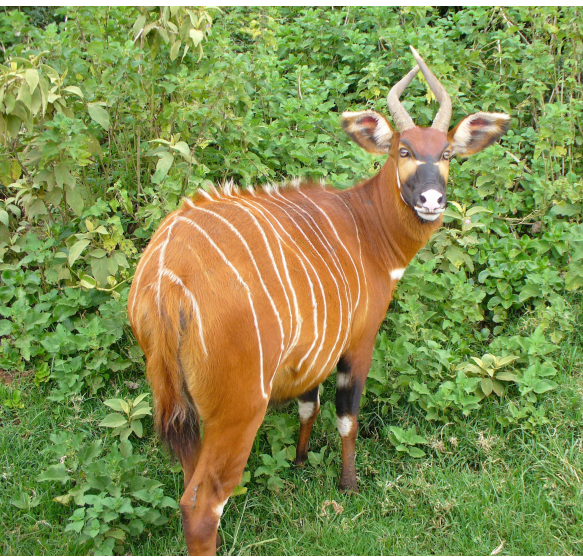




# Glossary of Wildlife Management Terms and Definitions

Initiated by the Collaborative Partnership  
on Sustainable Wildlife Management  
(CPW) and compiled by the International  
Union of Forest Research Organizations  
(IUFRO) together with the CPW members



## **DISCLAIMER**

The Glossary of Wildlife Management Terms and Definitions, initiated by the Collaborative Partnership on Sustainable Wildlife Management (CPW) and compiled by the International Union of Forest Research Organizations (IUFRO) on behalf of the partnership, is a work in progress, intended to contribute to a common understanding and dialogue on issues relating to wildlife management and conservation. The content in this publication will be updated periodically in the light of further knowledge gained at subsequent stages of the initiative.

The terms and definitions provided in this publication do not replace official terminology adopted by the CPW members or their constituencies, and do not imply the expression of any opinion whatsoever on the part of CPW members concerning the legal or development status of any country, territory, city or area or of its authorities, or concerning the delimitation of its frontiers or boundaries. The mention of specific companies or products of manufacturers, whether or not these have been patented, does not imply that these have been endorsed or recommended by CPW members in preference to others of a similar nature that are not mentioned.

The use of terms by the CPW is without prejudice to the use of the terms in the context of the Convention on Biological Diversity, its Protocols and decisions of the relevant governing bodies.

*Cover photos: <http://all-free-download.com/free-photos/>*

*Lynx by beeki*

*Bald eagle by Peter Kraayvanger*

*Mountain bongo by tpsdave*

*Sumatran tiger by Hans*

## **GLOSSARY OF WILDLIFE TERMS**

### **ACCESS AND BENEFIT SHARING (ABS)**

**FR Accès et partage des avantages - ES Acceso y participación en los beneficios - DE Zugang und gerechter Vorteilsausgleich**

The way in which genetic resources may be accessed, and how the benefits that result from their use are shared between the people or countries using the resources (users) and the people or countries that provide them (providers). [CBD, 2011]

### **ADAPTATION**

**FR Adaptation - ES Adaptación - DE Anpassung**

The morphological, physiological, and behavioural characteristics and processes organisms have acquired and utilize to survive. [White, J.M.]

Adjustment in natural or human systems to a new or changing environment, including anticipatory and reactive adaptation, private and public adaptation, and autonomous and planned adaptation. [UNEP, 2007]

The process of change in structure and/or function that makes an organism or a population better suited to survive in a slow or rapidly changing environment. Adaptation may be achieved by phenotypic tuning to prevailing environmental conditions, or through evolutionary changes of genetic structure at the population level. [IUFRO, 2005]

## **ADAPTIVE MANAGEMENT**

FR **Gestion adaptive** - ES **Gestión adaptativa, manejo adaptativo** - DE **adaptive Bewirtschaftung**

[IUCN] A systematic process of continually improving management policies and practices by learning from the outcomes of existing programmes.

A dynamic approach to forest management in which the effects of treatments and decisions are continually monitored and used, along with research results, to modify management on a continuing basis to ensure that objectives are being met. [*IUFRO, 2005*]

Type of natural resource management with decisions made as part of an ongoing science-based process; actions are designed so they provide useful information for future learning; monitoring and evaluation are critical components. [*WAZA, 2005*]

## **AGRICULTURAL INTENSIFICATION**

FR **Intensification agricole** - ES **Intensificación agrícola** - DE **Intensivierung der Landwirtschaft**

There are a variety of definitions of agricultural intensification, but they all essentially refer to a process whereby inputs of capital and/or labor are increased to raise the productivity or yield (output) of a fixed land area. The academic interest in agricultural intensification has been concerned with the technical, social, and ecological details of local intensification processes as well as more broadly with agricultural intensification as key in the rise of complex societies and development in general. Agricultural intensification is a process that involves both societal



(social, political, and economic) and environmental processes of change. [*Encyclopedia of Geography, 2016*]

### **ALIEN SPECIES**

= EXOTIC SPECIES, = INTRODUCED SPECIES, = NON-NATIVE SPECIES

FR **Espèce étrangère, Espèce exotique** – ES **Especie introducida, especie exótica** – DE **gebietsfremde Art**

Species introduced outside its normal distribution. [*UNEP, 2007*]

[CBD] Species, subspecies or lower taxon, introduced (i.e. by human action) outside its natural past or present distribution; includes any part, gametes, seeds, eggs, or propagules of such species that might survive and subsequently reproduce. [*Decision VI/23<sup>1</sup> of the Conference of the Parties to the Convention on Biological Diversity, 2000*] [*IUCN 2000*]

### **ALTERNATIVE LIVELIHOODS**

FR **Moyens de subsistance alternatifs** - ES **Medios de vida alternativos** – DE **Alternative Lebensgrundlage**

The name given to government attempts, especially to replace the illicit cultivation of banned substances, such as opium or coca, with alternative, legal crops or other activities as a source of income.

---

<sup>1</sup> One representative entered a formal objection during the process leading to the adoption of this decision and underlined that he did not believe that the Conference of the Parties could legitimately adopt a motion or a text with a formal objection in place. A few representatives expressed reservations regarding the procedure leading to the adoption of this decision (see UNEP/CBD/COP/6/20, paras. 294-324).

## **ANIMAL IDENTIFICATION**

FR **Identification des animaux** - ES **Identificación de los animales** - DE **Tierkennzeichnung**

[OIE] The combination of the identification and registration of an animal individually, with a unique identifier, or collectively by its epidemiological unit or group, with a unique group identifier. [OIE, 2014]

In a wildlife context, *identification* refers to correctly assigning a taxon to a species.

## **ANIMAL TRACEABILITY**

FR **Traçabilité animale, traçabilité des animaux** – ES **rastreabilidad de los animales** - DE **Rückverfolgbarkeit der Tiere, Herkunftssicherung**

[OIE] The ability to follow an animal or group of animals during all stages of its life. [OIE, 2014]

## **ANIMAL WELFARE**

FR **Bien-être animal** - ES **Bienestar animal** – DE **Tierschutz, Tierwohl**

[OIE] How an animal is coping with the conditions in which it lives. An animal is in a good state of welfare if (as indicated by scientific evidence) it is healthy, comfortable, well nourished, safe, able to express innate behaviour and if it is not suffering from unpleasant states such as pain, fear and distress. Good animal welfare requires disease prevention and veterinary treatment, appropriate shelter, management, nutrition, humane handling and human slaughter/killing. Animal welfare refers to the state of the

animal; the treatment that an animal receives is covered by other terms such as animal care, animal husbandry, and humane treatment. [OIE, 2014]

### **BENEFIT SHARING**

FR **Partage des avantages** - ES **Participación en los beneficios** – DE **Vorteilsausgleich**

The commitment to channel some kind of returns, whether monetary or non-monetary, back to the range of designated participants; for example sharing of benefits arising from sustainable wildlife management.

### **BIG GAME**

FR **Gros gibier** - ES **Caza mayor** - DE **Grosswild**

Relatively large animals sought or taken by hunting or fishing especially for sport.

Term used to designate larger species that are hunted. Examples: bear, moose, deer, elk, caribou, and bighorn sheep. In many states, species are legally designated as big game, small game (rabbits, squirrels, gamebirds), and non-game (songbirds, birds of prey).

### **BIOLOGICAL DIVERSITY**

= BIODIVERSITY

FR **Diversité biologique, biodiversité** – ES **Diversidad biológica, biodiversidad** – DE **Biologische Vielfalt, Biodiversität**

[CBD] The variability among living organisms from all sources including, inter alia, terrestrial, marine and other aquatic ecosystems and the ecological complexes of which they are part; this includes diversity within species, between species and of ecosystems. *[Article 2 of the Convention on Biological Diversity, 1992]*

## **BIOLOGICAL RESOURCES**

FR **Ressources biologiques** – ES **Recursos biológicos** – DE **Biologische Ressourcen**

[CBD] Include genetic resources, organisms or parts thereof, populations, or any other biotic component of ecosystems with actual or potential use or value for humanity. *[Article 2 of the Convention on Biological Diversity, 1992]*

## **BIOSECURITY PLAN**

FR **Plan de sécurité biologique** - ES **Plan de bioseguridad** – DE **Biosicherheitsplan**

[OIE] Potential pathways for the introduction and spread of disease in a zone or compartment, and describes the measures which are being or will be applied to mitigate the disease risks, if applicable, in accordance with the recommendations in the Terrestrial Code. *[OIE, 2014]*

## **BIOTECHNOLOGY**

FR **Biotechnologie** – ES **Biotecnología** – DE **Bio-technologie**



[CBD] Any technological application that uses biological systems, living organisms, or derivatives thereof, to make or modify products or processes for specific use. [Article 2 of the Convention on Biological Diversity, 1992]

## **BUFFER ZONE**

FR **Zone tampon, périmètre de protection** – ES **Zona de amortiguamiento, zona de transición** – DE **Pufferzone, Pflegezone**

[IUCN] Areas between core protected areas and the surrounding landscape or seascape which protect the network from potentially damaging external influences and which are essentially transitional areas [IUCN, 2015]

## **BUSH MEAT**

= BUSHMEAT, = WILD MEAT, WILDMEAT, = GAME MEAT

FR **Viande de brousse** – ES **Carne de animales silvestres, carne de fauna silvestre, carne de caza de subsistencia** – DE **Buschfleisch, Wildfleisch, Bushmeat**

[FAO] (originated from west Africa and refers to meat of wild animals) wild animals hunted/collected for food, while "game" is used in reference to animals hunted for sport or trophy [FAO, 1997]

Non-domesticated animals (wildlife) used as food, from termites to elephants, often collected and traded in an uncontrolled and illegal manner. [WAZA, 2005]

[CITES] Meat for human consumption derived from wild animals. (Bushmeat in the forest context, where primates form a significant source of bushmeat) [<http://www.cites.org/eng/resources/terms/glossary.php>]

Non-domesticated meat from terrestrial wild mammals, birds, reptiles and amphibians harvested for food or other purposes, including medicinal use, primarily in tropical and sub-tropical forests. [CPW sourcebook, 2014]

### **BUSH MEAT HUNTING**

= WILD MEAT HUNTING

Harvesting of wild animals in tropical and sub-tropical forests for food and for non-food purposes, including medicinal use [The CBD Liaison Group on Bushmeat, 2011]

### **CANNED HUNT(ING)**

FR **Chasse close** – ES **Caza enlatada** - DE **Gatterjagd**

A ***trophy hunt*** in which an animal is kept in a confined area, such as in a fenced-in area, increasing the likelihood of the hunter to obtain a kill. It is also mentioned as hunt for animals that have been raised on game ranches until they are mature enough to be killed for trophy collections.

Note: There have been criticisms of this method of hunting from both hunters and animal welfare advocacy groups.

### **CAPTIVE WILD ANIMAL**

FR **Animal sauvage captif** - ES **Animal salvaje cautivo** – DE **in Gefangenschaft gehaltenes Wildtier**

[OIE] An animal that has a phenotype not significantly affected by human selection but that is captive or otherwise

lives under direct human supervision or control, including zoo animals and pets. [OIE, 2014]

## **CARNIVORE**

FR **Carnivore** – ES **Carnívoro** – DE **Fleischfresser**

Meat eating animals. [IHEA, 2014]

An animal belonging to the order Carnivora, including predominantly meat eating mammals. [Envirothon, 2013]

## **CARRYING CAPACITY**

FR **Capacité, capacité de soutien, capacité de charge** – ES **Capacidad de carga** – DE **Tragfähigkeit**

The maximum number of people, or individuals of a particular species, that a given part of the environment can maintain indefinitely. [Carpenter et al. 2000]

[FAO] [IUCN] Amount of a given activity that can be accommodated within the environmental capacity of a defined area. In aquaculture: —usually considered to be the maximum quantity of fish that any particular body of water can support over a long period without negative effects to the fish and to the environment.

### Note:

The expression [IUCN] *Wildlife stakeholder acceptance capacity* brings acceptance (tolerance levels) of wildlife stakeholders in to the definition of **carrying capacity**.

## **CATCH-AND-RELEASE**

FR **Pêche avec remise à l'eau** - ES **Pescar y liberar, pescar con devolución, captura y liberación** - DE **Fangen und Freilassen, Zurücksetzen, Catch-and-Release**

[IUCN] The process of capturing a fish, usually by line and hook (angling), and releasing it alive. This ranges from legally required mandatory release of protected sizes and species to voluntary catch-and-release of fish that could have been retained.

## **COMMENSAL**

FR **Commensal** - ES **Comensal** - DE **Kommensale, Symbiont**

A species that lives in close association and gets some benefit from another species but does not return any benefit (e.g. gopher frogs live in gopher tortoise burrows but provide no benefit for the gopher tortoise). [*Envirothon, 2013*]

## **COMMERCIAL HUNTING**

FR **Chasse commerciale** - ES **Caza comercial** - DE **kommerzielle Jagd**

[FAO] An economic activity involving hunting as a way of life, final purchasers or consumers, and often a chain of middlemen. The first link of the chain may be subsistence hunters who sell their surplus meat or save the hides for later sale.

Note: Many organizations refer to polar bear hunting and trade in Canada as commercial hunting. *Commercial* can



also have a connotation of large scale operation leaving aside the subsistence aspect.

**COMMUNITY BASED CONSERVATION (CBC)**  
FR **Conservation à base communautaire (CBC),**  
**conservation en partenariat communautaire** – ES  
**Conservación basada en la comunidad (CBC)** – DE  
**Erhaltungsprogramm auf kommunaler Ebene**

Researchers have found it challenging to provide a precise definition because it has been used to refer to a myriad of initiatives with different aims, governance systems, degrees of local decision-making power, and incentives to encourage communities' participation for conservation purposes (Ruiz-Mallén and Corbera 2013). Western and Wright's (1994:7) seminal definition states that community-based conservation "includes natural resources or biodiversity protection by, for, and with the local community." These authors also highlight that the core of the concept is "the coexistence of people and nature," which is "distinct from protectionism and the segregation of people and nature" (Western and Wright 1994:8). Thus, community-based conservation has been broadly defined as a wide range of natural resource management practices improving conditions for the coexistence between humans and nature.

**COMMUNITY BASED NATURAL RESOURCE  
MANAGEMENT (CBNRM)**  
FR **Gestion communautaire des ressources naturelles**  
**(GCRN)** – ES **Gestión de recursos naturales a nivel**  
**comunitario, gestión comunitaria de los recursos**  
**naturales, manejo comunitario de los recursos**

## **naturales – DE Gemeinschaftsbasierte Ressourcenbewirtschaftung**

An approach to conservation and development that recognizes the rights of local people to manage and benefit from the management and use of natural resources. It entails transferring back to communities access and use rights, empowering them with legislation and devolved management responsibility, building their capacity and creating partnerships with the public and private sector actors to develop programmes for the sustainable use of a variety of natural resources. [WWF, 2015]

## **COMMUNITY BASED WILDLIFE MANAGEMENT** FR **Gestion communautaire de la faune sauvage** – ES **Gestión comunitaria de la vida silvestre, manejo comunitario de la vida silvestre** – DE **Gemeinschaftsbasiertes Wildtiermanagement**

An approach to conservation and development that recognizes the rights of local people to manage and benefit from the management and use of wildlife.

## **CONSERVATION** FR **Conservation** - ES **Conservación** – DE **Erhaltung**

[IUCN] The management of human use of the biosphere so that it may yield the greatest sustainable benefit to present generations while maintaining its potential to meet the needs and aspirations of future generations. Thus conservation is positive, embracing preservation, maintenance, sustainable utilization, restoration, and

enhancement of the natural environment. [*Mc Neely et al, IUCN 1980*]

The management or control of human use of resources (biotic and abiotic) in an attempt to restore, enhance, protect, and sustain the quality and quantity of a desired mix of species, and ecosystem conditions and processes for present and future generations. There are many varied definitions of conservation in different fields. Most encompass the notion of judicious use by humans over time, which in some instances may mean no use at all or use that serves to enhance, rather than deplete, resources. [*Dunster, J. & K. 1996*]

### **CONSERVATION HUNTING**

FR **Chasse et conservation** - ES **Caza por conservación** - DE **Jagd zur Erhaltung**

Activity as part of a conservation programme or a wildlife management project which includes protection, maintenance, sustainable utilization or populations through hunting, and restoration, and enhancement of its habitats.

### **CONSUMPTIVE USE**

FR **Consommation totale** - ES **Consumo total** - DE **konsumtive Nutzung**

Any use that involves activity resulting in the loss of wildlife i.e. hunting. [*Envirothon, 2013*]

## **CONTAINMENT ZONE**

**FR Zone de confinement – ES Zona de contención – DE Eingrenzungsbereich**

[OIE] A defined zone around and including suspected or infected establishments, taking into account the epidemiological factors and results of investigations, where control measures to prevent the spread of the infection are applied. [OIE, 2014]

## **CONTIGUOUS FOREST**

**FR Bloc continu de forêt – ES Selva contigua, hábitat forestal continuo – DE zusammenhängendes Waldgebiet**

An area of forested land with either no roads or low densities of class III or IV roads and little or no human development (buildings, parking areas, lawns, gravel pits). Contiguous forest areas may have various age classes of forest cover and, in fact, may be composed of other habitat types such as wetlands or old meadows that are part of the overall contiguous habitat complex. Ideally, these areas are connected with other similar areas so that the animals that use them can move freely to other forested areas and habitats. It is important to keep in mind that there is no minimum or maximum number of acres to define contiguous habitat in all cases throughout the state. Rather, it is important to consider the size of the contiguous forest habitat and associated species of plants and animals within the context of the level of fragmentation in the region/area. In addition, the configuration of the habitat is also an important consideration for identifying contiguous forests. For instance, an area of forest habitat that is highly irregular in shape, with a high degree of forest edge may be



less functional for some species than forest habitat of the same acreage with a regular shape. [Vermont, 2005]

## **CORRIDOR**

FR **Corridor, couloir de migration** - ES **Corredor, pasillo, nexo** – DE **Biotoverbund, Biotopvernetzung**

[IUCN] Way to maintain vital ecological or environmental connectivity by maintaining physical linkages between core areas.

Area of suitable habitat, or habitat undergoing restoration, linking two or more protected areas (or linking important habitat that is not protected) to allow interchange of species, migration, gene exchange, etc.

Area of habitat connecting wildlife populations separated by human activities or structures (such as roads, development, or logging). This allows an exchange of individuals between populations, which may help prevent the negative effects of inbreeding and reduced genetic diversity (via genetic drift) that often occur within isolated populations. Corridors may also help facilitate the re-establishment of populations that have been reduced or eliminated due to random events (such as fires or disease).

## **CRITICAL AREA**

FR **Aire clé** - ES **Area crítica** – DE **kritischer Bereich**

Parts of the **home range** where limiting habitat resources are located. They are also termed 'key areas', e.g. area near water sources on which desert wildlife may depend in dry seasons.

## **CRITICAL HABITAT**

FR **Habitat essentiel** - ES **Hábitat crítico** – DE **kritischer Lebensraum**

As used in the endangered species act legislation, includes areas in which are found the physical and biological features essential to the survival of a species.

Geographic area containing physical or biological features essential to the conservation of a listed species or an area that may require special management considerations or protection. [*Envirothon, 2013*]

## **CRITICALLY ENDANGERED (CR)**

FR **en danger critique** - ES **en peligro crítico** - DE **vom Aussterben bedroht**

[IUCN] An IUCN Red List category. A taxon is *Critically Endangered* when the best available evidence indicates that it is considered to be facing an extremely high risk of extinction in the wild. [*IUCN, 2012*]

## **CULTURAL HERITAGE IMPACT ASSESSMENT**

FR **Evaluation de l'impact sur le patrimoine culturel** - ES **Evaluación del impacto patrimonio cultural** – DE **Kulturerbeverträglichkeit**

A process of evaluating the likely impacts, both beneficial and adverse, of a proposed development on the physical manifestations of a community's cultural heritage including sites, structures, and remains of archaeological, architectural, historical, religious, spiritual, cultural,

ecological or aesthetic value or significance. [COP 7 Decision VII/16F, Article 8(j) and related provisions]

## **CULTURAL IMPACT ASSESSMENT**

**FR Evaluation de l'impact culturel - ES Evaluación del impacto cultural – DE Kulturverträglichkeit**

A process of evaluating the likely impacts of a proposed development on the way of life of a particular group or community of people, with full involvement of this group or community of people and possibly undertaken by this group or community of people; a cultural impact assessment will generally address the impacts, both beneficial and adverse, of a proposed development that may affect, for example, the values, belief systems, customary laws, language(s), customs, economy, relationships with the local environment and particular species, social organization and traditions of the affected community. [COP 7 Decision VII/16F, Article 8(j) and related provisions]

## **CUSTOMARY LAW**

**FR Droit coutumier - ES Derecho consuetudinario – DE Gewohnheitsrecht**

Law consisting of customs that are accepted as legal requirements or obligatory rules of conduct; practices and beliefs that are so vital and intrinsic a part of a social and economic system that they are treated as if they were laws<sup>2</sup>. [COP 7 Decision VII/16F, Article 8(j) and related provisions]

---

<sup>2</sup> See definition contained in Black's Law Dictionary (7th edition), 2000.

**DATA DEFICIENT (DD)**

FR **Données insuffisantes** – ES **Datos insuficientes** – DE **ungenügende Datengrundlage**

An IUCN Red List category. A taxon is *Data Deficient* when it has been categorized as offering insufficient information for a proper assessment of conservation status to be made. This does not necessarily indicate that the species has not been extensively studied; but it does indicate that little or no information is available on the abundance and distribution of the species.

**DEFORESTATION**

FR **Déboisement** - ES **Deforestación** - DE **Entwaldung**

The long-term removal of trees from a forested site to permit other site uses. It implies the long-term or permanent loss of forest and implies transformation into another land use.

**DEPREDATION**

FR **Déprédation** – ES **Depredación** – DE **Plünderung, Räuberei, Schaden**

The act of killing, damaging or consuming animals, crops or other agricultural resources. [USDA, 2013]

The act of preying upon in reference to wildlife damage to farmer's crops. [Envirothon, 2013]

## **DISEASE VECTOR**

FR **Vecteur de maladie, vecteur pathogène** – ES **Vector de enfermedades, transmisor de enfermedad** – DE **Krankheitsüberträger**

Vectors are vehicles by which infections are transmitted from one host to another. Most commonly known vectors consist of arthropods, domestic animals or mammals that assist in transmitting parasitic organisms to humans or other mammals. [*Envirothon, 2013*]

An intermediate agent capable of mechanically or biologically transferring a pathogen from one host organism to another. Examples of vectors include insects, mosquitos, parasites, rodents and syringes. [*Termium plus, 2015*]

## **DISINFECTION**

FR **Désinfection** – ES **Desinfección** – DE **Desinfektion**

[OIE] The application, after thorough cleansing, of procedures intended to destroy the infectious or parasitic agents of animal diseases, including zoonoses; this applies to premises, vehicles and different objects which may have been directly or indirectly contaminated. [*OIE, 2014*]

## **DISINFESTATION**

FR **Désinfestation, désinsectisation, déparasitage** – ES **Desinfestación, desinsectación** – DE **Desinsektion, Desinfestation, Entwesung**

[OIE] The application of procedures intended to eliminate infestation. [*OIE, 2014*]

## **DISPERSAL**

FR **Propagation** - ES **Dispersión** – DE **Ausbreitung**

It is the permanent abandonment of home ranges and movement, or wandering, in search of suitable habitat for a new home range.

Is the movement of an animal from its natal area (place where it was born) to a new area where it lives and reproduces (if it survives that long). [*White, J.M.*]

The managerial action of distributing a given amount of wilderness use over a larger area, such as through the construction of additional trails, with the intention of lessening impacts to wilderness areas. [*American Trails, 2014*]

## **DOMESTICATED SPECIES**

= CULTIVATED SPECIES

FR **Espèce domestiquée, Espèce cultivée** – ES **Especie domesticada, Especie cultivada** – DE **domestizierte Art**

[CBD] A species in which the evolutionary process has been influenced by humans to meet their needs. [*Article 2 of the Convention on Biological Diversity, 1992*]

A species in which some or all reproduction is organized on a sustained basis by humans, typically with long-term effects on gene pools. [*IUCN, 2015*]

## **DOMESTICATION**

FR **Domestication** - ES **Domesticación** – DE **Domestikation, Domestizierung**

The process by which evolution has been influenced by humans to meet their needs; e.g. non-shattering seeds.

[FAO, IUCN] Process by which plants, animals or microbes selected from the wild adapt to a special habitat created for them by humans, bringing a wild species under human management. In a genetic context, the —process in which changes in gene frequencies and performance arise from a new set of selection pressures exerted on a population. [IUCN, 2015]

The condition wherein the breeding, care and feeding of animals are more or less controlled by man. Under modern husbandry practices, complete control of breeding and maintenance is typical. Domestication involves some biological i.e. morphological, behavioral and/or physiological changes in animals.

### **DRIVEN HUNT**

= DRIVING

FR **Chasse en battue, la battue** – ES **Caza en batida, la batida** – DE **Bewegungsjagd**

[CIC] The herding of animals in a particular direction, usually toward another hunter in the group.

### **ECOLOGICAL NICHE**

FR **Niche écologique** – ES **Nicho ecológico** – DE **ökologische Nische**

The set of habitat resources (food, cover types, water etc.) used by a species, as determined by its geographic and ecological range and its adaptations.

The role or "job" of a species in its environment. The wolf fills the niche of top predator in the ecosystem. Its job is to keep prey populations healthy by killing the weak and the sick prey animals. Because wolves are opportunistic hunters, they do prey on the young also. Hunting is a tough job, and finding a meal is critical, especially when the pups are waiting to be fed.

The ecological niche describes how an organism or population responds to the distribution of resources and competitors (for example, by growing when resources are abundant, and when predators, parasites and pathogens are scarce) and how it in turn alters those same factors (for example, limiting access to resources by other organisms, acting as a food source for predators and a consumer of prey). "The type and number of variables comprising the dimensions of an environmental niche vary from one species to another [and] the relative importance of particular environmental variables for a species may vary according to the geographic and biotic contexts". [Townsend et al., 2011]

## **ECOSYSTEM**

FR **Ecosystème** – ES **Ecosistema** – DE **Ökosystem**

[CBD] A dynamic complex of plant, animal and micro-organism communities and their non-living environment interacting as a functional unit. [Article 2 of the Convention on Biological Diversity, 1992]

## **ECOSYSTEM DIVERSITY**

FR **Diversité des écosystèmes** – ES **Diversidad de ecosistemas** – DE **Ökosystemvielfalt, Diversität der Ökosysteme**



The variety of ecosystems that occurs within a larger landscape, ranging from biome (the largest ecological unit) to microhabitat.

[UNEP] All the different habitats, biological communities and ecological processes, as well as variation within individual ecosystems.

## **ECOSYSTEM MANAGEMENT**

= ECOSYSTEM-BASED MANAGEMENT

FR **Gestion des écosystèmes** - ES **Gestión de ecosistemas, manejo de ecosistemas** – DE **Ökosystem-Management**

An approach to maintaining or restoring the composition, structure, function and delivery of services of natural and modified ecosystems for the goal of achieving sustainability. It is based on an adaptive, collaboratively developed vision of desired future conditions that integrates ecological, socio-economic, and institutional perspectives, applied within a geographic framework, and defined primarily by natural ecological boundaries. [*Ontario, 2009*]

The skillful, integrated use of ecological knowledge at various scales to produce desired resource values, product, services, and conditions in ways that also sustain the diversity and productivity of ecosystems. This approach blends physical, biological, and cultural/ social needs.

Management guided by monitoring of ecological interactions and processes necessary to sustain ecosystem composition, structure, and function over the long run. Note: This may involve changing industrial practices to emulate natural disturbances, so as to maintain ecosystem structure, pattern, and process within natural limits. Protected areas,

monitoring, and adaptive management are additional elements. [IUFRO, 2005]

## **ECOSYSTEM RESILIENCE**

**FR Résilience des écosystèmes – ES Resiliencia de los ecosistemas – DE Widerstandskraft der Ökosysteme, Resilienz der Ökosysteme**

The level of disturbance that an ecosystem can undergo without crossing a threshold into a different structure or with different outputs. Resilience depends on ecological dynamics as well as human organizational and institutional capacity to understand, manage and respond to these dynamics. [UNEP, 2007]

## **ECOSYSTEM SERVICES**

**FR Services écosystémiques – ES Servicios del ecosistema, servicios ecosistémicos – DE Ökosystemdienstleistung, ökosystemare Dienstleistung**

The benefits people obtain from ecosystems. These include provisioning services, such as food and water, regulating services, such as flood and disease control, cultural services, such as spiritual, recreational and cultural benefits, and supporting services, such as nutrient cycling, that maintain the conditions for life on earth. Sometimes called ecosystem goods-and-services. [UNEP, 2007]

Benefits humans derive from natural ecosystems. The UN 2004 millennium ecosystem assessment defines four broad categories: provisioning, regulating, supporting and cultural. Find out more about ecosystem services. [WLT, 2014]

## **ECO-TOURISM**

FR **Écotourisme** - ES **Ecoturismo** - DE **Ökotourismus**

Environmentally responsible travel to relatively undisturbed natural areas, in order to enjoy, study and appreciate nature that promotes conservation, has a low visitor impact, and provides for beneficially active socio-economic involvement of local populations. [IUFRO, 2005]

## **EMPOWERMENT**

FR **Autonomisation, habilitation** - ES **Empoderamiento** - DE **Empowerment, Selbstbemächtigung, Befähigung der Eigenkompetenz**

A multi-dimensional social process that helps people to gain control over their own lives, to take action and control work and decision-making in autonomous ways. [IUFRO, 2005]

## **ENDANGERED**

FR **(Espèce) menacée** - ES **(Especie) amenazada de extinción** - DE **gefährdet(e Art), bedroht(e Art)**

[IUCN] An IUCN Red List category. A taxon is *Endangered* when the best available evidence indicates that it meets any of the criteria A to E for Endangered, and it is therefore considered to be facing a very high risk of extinction in the wild. [IUCN, 2012]

## **ENDEMIC SPECIES**

FR **Espèce endémique** - ES **Especie endémica** - DE **endemische Art**

A species is endemic to an area, if it is not found anywhere else. For example, the proboscis monkey is endemic to Borneo and the sharpe's longclaw to Kenya. [WLT, 2014]

Species native to and restricted to a particular geographic area.

## **ENVIRONMENTAL IMPACT ASSESSMENT**

FR **Evaluation de l'impact environnemental** - ES

**Evaluación del impacto ambiental** - DE

**Umweltverträglichkeit**

Process of evaluating the likely environmental impacts of and proposing appropriate mitigation measures for, a proposed development, taking into account interrelated socio-economic, cultural and human health impacts, both beneficial and adverse. [COP7 Decision VII/16F, Article 8(j) and related provisions]

## **ERADICATION**

FR **Eradication** - ES **Erradicación, eliminación completa/total** - DE **Ausrottung, vollständige Beseitigung**

[IUCN] The complete removal of all living representatives of a species that is becoming (or is likely to become) invasive in a specified area or country [IUCN, 2015]

[OIE] The elimination of a pathogenic agent from a country or zone. [OIE, 2014]

Application of phytosanitary measures to eliminate a pest from an area. [IPPP, 2006]

## **ETHOLOGY**

FR **Éthologie** – ES **Etología** – DE **Ethologie, Tierverhaltensforschung**

The scientific study of animal behavior, especially as it occurs in a natural environment. [*The American Heritage Science Dictionary, 2002*]

## **EXOTIC SPECIES**

= NON-NATIVE SPECIES

FR **Espèce exotique** – ES **Especie exótica** – DE **Exotische Art**

Species that occur in a given place, area, or region as the result of direct or indirect, deliberate or accidental introduction of the species by humans, and for which introduction has permitted the species to cross a natural barrier to dispersal.

Plant species, animals, fungi and micro-organisms which are not native to the region in which they occur. [*IUFRO, 2005*]

See also ***alien species***

## **EX-SITU CONSERVATION**

FR **Conservation ex situ** – ES **Conservación ex situ** – DE **Ex-situ Erhaltung**

[CBD] The conservation of components of biological diversity outside their natural habitats. [*Article 2 of the Convention on Biological Diversity, 1992*]

## **EXTINCT**

FR (**Espèce**) **disparue**, (**espèce**) **éteinte** – ES (**Especie**) **extinguida**, (**especie**) **extinta** – DE **ausgestorben**(**e Art**)

[IUCN] A taxon is *Extinct* when there is no reasonable doubt that the last individual has died. A taxon is presumed Extinct when exhaustive surveys in known and/or expected habitat, at appropriate times (diurnal, seasonal, annual), throughout its historic range have failed to record an individual. Surveys should be over a time frame appropriate to the taxon's life cycle and life form. [IUCN, 2012]

Note: A species can go extinct because of several reasons: its habitat has been destroyed, its primary prey has gone extinct, it has been hunted to extinction or some type of catastrophe has devastated its lifestyle in such a short period of time that it is not able to adapt to the changes.

## **EXTINCT IN THE WILD**

FR **Eteint dans la nature** - ES **Extinto en la naturaleza** - DE **in der Natur ausgestorben**

[IUCN] An IUCN Red List category. A taxon is *Extinct in the Wild* when it is known only to survive in captivity, in cultivation or as a naturalized population (or populations) well outside the past range. A taxon is presumed extinct in the wild when exhaustive surveys in known and/or expected habitat, at appropriate times (diurnal, seasonal, annual), and throughout its historic range have failed to record an individual. Surveys should be over a time frame appropriate to the taxon's life cycle and life form. [IUCN, 2015]

## **EXTINCTION**

FR **Extinction** – ES **Extinción, desaparición** - DE **Aussterben**

[IUCN] An irreversible process whereby a species or distinct biological population forever ceases to exist [IUCN, 2015]

See also **eradication**.

## **FAIR-CHASE HUNTING**

FR **Chasse équitable** – ES **Caza ética** – DE **waidgerechte Jagd**

[CIC] The ethical, sportsman-like, lawful pursuit, and taking of any free-ranging, wild, native big game animal that does not give the hunter an unfair advantage. In simpler terms, it means hunting without taking advantage of the animals and allowing them a fair chance to escape in defense. [Boone and Crocket, 2015]

## **FERAL ANIMAL**

FR **Animal féral** – ES **animal asilvestrado/cimarrón** – DE **verwildertes Tier, ausgewildertes Tier**

[OIE] An animal of a **domesticated species** that now lives without direct human supervision or control. [OIE, 2014]

[IUCN] A state in which animals whose forebears had been domesticated by man but which now exist as free-living, unmanaged, and self-sustaining populations. [Hodges J (ed), 1986]

An organism or population of organisms that has escaped or been released from domestication (or cultivation) and has

adapted to existence in the wild, but remains distinct from truly wild species. [White, J.M.]

## **FISHING TOURISM**

**FR *Tourisme de pêche* – ES *Turismo de pesca* – DE *Angeltourismus, Fischereitourismus***

[IUCN] Recreational fishing conducted by fishers who may sometimes travel considerable distances from their home and/or own fishing areas, and often abroad, in order to visit other areas to fish. They may be well-acquainted with their destination and be familiar with the species they fish. There is, however, a gradient in the degree to which travelling fishers may have socio-cultural links to their fishing destinations. The more exotic and unfamiliar a fishing destination is, the greater the socio-cultural barriers can be. In addition, motivations for fishing by such tourists may place greater emphasis on adventure and souvenirs (e.g. trophies) than is the case for fishers with closer links to the area in which they angle. This can motivate payment of significant sums of money to intermediaries ("fishing tour operators") that organize and facilitate their fishing experiences. [<https://wcd.coe.int/>]

## **FLAGSHIP SPECIES**

**FR *Espèce vedette, espèce phare* - ES *Especie emblemática, especie bandera* – DE *Flaggschiff-Art, Aushängeschildart***

[IUCN] Popular charismatic species that serve as symbols to stimulate conservation awareness and action locally, nationally, regionally or globally [IUCN, 2015]



[UNEP] A species selected to act as an ambassador, icon or symbol for a defined habitat, issue, campaign or environmental cause.

### **FLOCK**

FR **Troupeau** - ES **Rebaño, manada** – DE **Herde, Schwarm**

[IUCN] A group of birds feeding or moving together.

[OIE] A number of animals of one kind kept together under human control or a congregation of gregarious wild animals. For the purposes of the Terrestrial Code, a flock is usually regarded as an *epidemiological unit*. [OIE, 2014]

See also **herd**.

### **FLYWAY**

FR **Voie de migration** - ES **Corredor de vuelo** – DE **Zugweg**

An established air route of migratory birds.

[IUCN] The biological systems of migration paths that directly link sites and ecosystems in different countries and continents. [Boere, G.C. et al, 2006]

### **FOOD CHAIN**

FR **Chaîne alimentaire, filière alimentaire** – ES **Cadena alimentaria, cadena trófica** – DE **Nahrungskette**

A sequence of feeding types, on successive levels within a community through which energy and biomass is transferred (e.g. plants are eaten by rodents that are eaten by snakes that are eaten by hawks). [*Envirothon, 2013*]

The transfer of food energy from one organism to another as each consumes a lower member and in turn is preyed upon by a higher member. [*NLW, 2014*]

### **FOOD SECURITY**

FR **Sécurité alimentaire** – ES **Seguridad alimentaria** – DE **Ernährungssicherheit, Nahrungsmittelsicherheit**

[FAO] A situation that exists when all people, at all times, have physical, social and economic access to sufficient, safe and nutritious food that meets their dietary needs and food preferences for an active and healthy life. Based on this definition, four food security dimensions can be identified: food availability, economic and physical access to food, food utilization and stability over time [*FAO, IFAD and WFP, 2014*]

Exists where people have access to sufficient, safe, and nutritious food which meets their dietary needs and food preferences for an active and healthy life. [*CPW Fact sheet 2*]

### **FORAGE**

FR **Fourrage** – ES **Foraje** - DE **Viehfutter, Futtermittel**

All browse and herbaceous plants that are available to feed livestock or wildlife.

Food for animals, especially when taken by browsing or grazing. [*USDA, 2013*]

Vegetation taken naturally by herbivorous animals (n); the act of searching for and eating vegetative materials (v).  
[*Envirothon, 2013*]

### **FOREST DEGRADATION**

FR **Dégradation des forêts** – ES **Degradación del bosque** – DE **Walddegradation**

The reduction of the capacity of a forest to provide goods and services. [*Harmonization process, 2002*]

### **FOREST GAME**

FR **Gibier de forêt** - ES **Cazería de bosque** – DE **Waldwild**

Game species that are managed and whose habitat needs are found mainly in forests. [*Envirothon, 2013*]

### **FREE-RANGE**

= FREE-RANGING

FR **en plein air, en liberté** – ES **al aire libre** – DE **Freilandhaltung**

[FAO] Farming method whereby animals are given the ability to roam freely instead of being restricted to a confined area.  
[*Ecolife Dictionary, 2015*]

Note: This term can be applied to dairy, poultry, and meat production. Other labels are often used to describe conditions similar to free range farming, including cage-free, free running, naturally nested, free roaming, and so on.

## **FRESH MEAT**

FR **Viandes fraîches** – ES **Carnes frescas** – DE **Frischfleisch**

[OIE] Meat that has not been subjected to any treatment irreversibly modifying its organoleptic and physicochemical characteristics. This includes frozen meat, chilled meat, minced meat and mechanically recovered meat. [OIE, 2014]

## **GAME**

FR **Gibier** - ES **Caza** - DE **Wild**

[IUCN] Game species include all wild avian and terrestrial mammal species for which hunting is legally permitted in countries that have signed the Convention on the Conservation of European Wildlife and Natural Habitats (Bern, 1979) [European Charter, 2007]

Refers to large mammals hunted for food, trophy or sport. In Africa, all species of wild animals, ranging from insects through reptiles, rodents to large mammals, are acceptable as a food resource.

A species of wildlife hunted or trapped by humans, including upland birds, waterfowl, small game, forbearing, and larger mammals that are within the purview of management. [White, F.G.]

## **GAME-MEAT-HYGIENE**

FR **Hygiène des viandes de gibier** - ES **Higiene de carnes de caza** – DE **Wildbrethygiene**

[FAO] Measures and conditions necessary to control hazards and to ensure fitness for human consumption of game meat taking into account its intended use.

### **GENETIC DIVERSITY**

FR **Diversité génétique** – ES **Diversidad genética** – DE **Genetische Vielfalt**

[UNEP] All the different genes contained in all the living species, including individual plants, animals, fungi, and microorganisms.

### **GENETIC MATERIAL**

FR **Matériel génétique** – ES **Material genético** – DE **Genmaterial**

[CBD] Any material of plant, animal, microbial or other origin containing functional units of heredity. [*Article 2 of the Convention on Biological Diversity, 1992*]

### **GENETIC RESOURCES**

FR **Ressources génétiques** – ES **Recursos genéticos** – DE **Genressourcen**

[CBD] Genetic material of actual or potential value. [*Article 2 of the Convention on Biological Diversity, 1992*]

### **HABITAT**

FR **Habitat** – ES **Hábitat** – DE **Habitat, Lebensraum**

[CBD] The place or type of site where an organism or population naturally occurs. [*Article 2 of the Convention on Biological Diversity, 1992*]

[IUCN] The locality or environment in which an animal lives. [*IUCN, 2015*]

- There are numerous scientific definitions of habitat from Multilateral Environmental Agreements, financial standards, and Conventions. The common principle is that habitat is a suitable place where an organism naturally occurs.
- Species are dependent for their survival on habitat. Habitat loss and fragmentation is the primary cause of species loss.
- Conservation of habitats is enshrined in multiple international strategies and Conventions including the Convention on Biological Diversity; the CBD Strategic Plan for Biodiversity 2011-2020; Convention on Migratory Species.

## **HABITAT LOSS**

FR **Perte d'habitat, disparition des habitats** – ES **Pérdida de hábitat** – DE **Lebensraumverlust, Habitatverlust**

The outcome of a process of land use change in which a 'natural' habitat-type is removed and replaced by another habitat-type, such as converting natural areas to production sites.

In such process, flora and fauna species that previously used the site are displaced or destroyed. Generally this results in a reduction of biodiversity.

## **HARVEST**

FR **Récolte** – ES **Caza, recolección** - DE **Fang, Ernte**

Proportion or number of a wildlife population brought to bag by hunters. [*Envirothon, 2013*]

The intentional gathering of plants, animals, and natural resources. In wildlife management, hunting is a form of harvesting in which animals are killed.

## **HAZARD**

FR **Danger** – ES **Peligro** – DE **Gefahr**

[FAO] A biological, chemical or physical agent in, or condition of, food with the potential to cause an adverse health effect.

[IUCN] A potentially damaging physical event, phenomenon or human activity, which may cause the loss of life or injury, property damage, social and economic disruption or environmental degradation. [*ISDR 2004*]

[OIE] A biological, chemical or physical agent in, or a condition of, an animal or animal product with the potential to cause an adverse health effect. [*OIE, 2014*]

## **HERBIVORE**

FR **Herbivore** - ES **Herbívoro** – DE **Pflanzenfresser, Herbivore**

Wildlife species that eat vegetation.

An animal that feeds chiefly on plants. [*American Heritage®*, 2011]

## **HERD**

FR **Cheptel, troupeau** – ES **Parvada, piara, manada, tropilla** – DE **Herde**

[OIE] A number of animals of one kind kept together under human control or a congregation of gregarious wild animals. For the purposes of the Terrestrial Code, a herd is usually regarded as an epidemiological unit. [*OIE*, 2014]

## **HOME RANGE**

FR **Domaine vital** – ES **Ámbito de hogar, área de acción** – DE **Lebensraum**

The area traversed by an animal during a defined part of its life (e.g. day, season, year) in order to eat, find shelter, and reproduce.

Note: An animal must find all its habitat requirements within its own home range, otherwise it must extend it.

See also ***territory***.

## **HOMING**

FR **(Instinct) de retour, rentrant chez soi, voyageur** - ES **(Instinto) de volver al hogar, mensajero** - DE **Heimfindeverhalten, Heimfindevermögen**

The ability to return home after travelling great distances.



The inherent ability of an animal to navigate towards an original location through unfamiliar areas. This location may be either a home territory, or a breeding spot.

### **HUMAN-WILDLIFE CONFLICT (HWC)**

FR **Conflits homme-faune sauvage** – ES **Conflictos entre los seres humanos y la vida silvestre** – DE **Mensch-Wildtier-Konflikt**

[CPW] Human-wildlife conflict (HWC) occurs when the needs of wildlife encroach on those of human populations or the needs of human populations encroach upon those of wildlife. More broadly, interactions between wildlife and humans can cause damage or costs to both, and lead to conflicts between different groups of people (human-human conflicts) over wildlife and how it should be managed. [CPW Fact sheet no 4]

Any interaction between humans and wildlife that results in negative impacts on human social, economic or cultural life, on the conservation of wildlife populations, or on the environment. [WWF, 2005]

Interaction between wild animals and people and the resultant negative impact on people or their resources, or wild animals or their habitat. It occurs when growing human populations overlap with established wildlife territory, creating reduction of resources or life to some people and/or wild animals. The conflict takes many forms ranging from loss of life or injury to humans, and animals both wild and domesticated, to competition for scarce resources to loss and degradation of habitat.

Note: Conflict management strategies earlier comprised lethal control, translocation, regulation of population size and preservation of endangered species. Recent

management approaches attempt to use scientific research for better management outcomes, such as behaviour modification and reducing interaction. As human-wildlife conflicts inflict direct, indirect and opportunity costs, the mitigation of human-wildlife conflict is an important issue in the management of biodiversity and protected areas.

## **HUNTING**

FR **Chasse** - ES **Caza** - DE **Jagd**

The pursuit and/or take of wild game species by all methods permitted by law within signatory countries. Motivations for this activity include consumption (use of meat, hides, furs and/or trophies), recreation, and/or management of game populations. [*European Charter on Hunting and Biodiversity, 2007*]

The extraction of any **wildlife**, from the wild, by whatever means and for whatever purpose. Wildlife is hunted for food, trophies (most often skins, teeth, antlers and horns), medicines and other traditional uses (most hard and soft body parts), and as pets (especially primates, birds and reptiles). Therefore individuals hunt tropical forest wildlife primarily to eat and/or sell it. [*Nasi, R. et al, 2008*]

See also ***commercial hunting, conservation hunting, fair-chase hunting, sport hunting, sustainable hunting***

## **HUNTING TOURISM**

FR **Tourisme de chasse** – ES **Turismo de caza** – DE **Jagdtourismus**

[IUCN] Hunting tourism is conducted by hunters who may sometimes travel considerable distances from their home and/or own hunting grounds, and often abroad, in order to

hunt. They may be well-acquainted with their destination and be familiar with the species they hunt. There is, however, a gradient in the degree to which travelling hunters may have sociocultural links to their hunting destinations. The more exotic and unfamiliar a hunting destination is, the greater the socio-cultural barriers can be. In addition, motivation for hunting by such tourists may place greater emphasis on adventure and souvenirs (e.g. trophies) than is the case for hunters with closer links to the hunting destination. This can motivate payment of significant sums of money to intermediaries ("hunting tour operators") that organize and facilitate their hunting experiences [European Charter on Hunting and Biodiversity, 2007].

## **ILLEGAL TRADE**

FR **Commerce illégal** - ES **Comercio ilegal** - DE **Illegaler Handel**

The trade of wild animals and products derived from wild animals across borders, in violation of local, state, federal or international law.

## **INBREEDING**

FR **Consanguinité** - ES **Consanguinidad** - DE **Inzucht**

Mating among related individuals.

The sexual reproduction of offspring from the mating or breeding of individuals or organisms that are closely related genetically. [*Encyclopedia Britannica*]

## **INCIDENCE**

FR **Incidence** – ES **Incidencia** – DE **Inzidenz**

[OIE] The number of new cases or outbreaks of a disease that occur in a population at risk in a particular geographical area within a defined time interval. [OIE, 2014]

## **INCUBATION PERIOD**

FR **Période d'incubation** – ES **Período de incubación** – DE **Inkubationszeit**

[OIE] The longest period which elapses between the introduction of the pathogen into the animal and the occurrence of the first clinical signs of the disease. [OIE, 2014]

## **INDICATOR SPECIES**

FR **Espèce indicatrice** – ES **Especie indicadora** – DE **Indikatorart(en)**

A species whose status provides information on the overall condition of the ecosystem and of other species in that ecosystem. [CEPA toolkit, 2007]

They reflect the quality and changes in environmental conditions as well as aspects of community composition. [Heywood, V. H. (Ed.), 1996]

[IUCN] A species sensitive to environmental change, which can therefore provide a measure of health for the ecosystem. [IUCN, 2015] Indicates certain environmental conditions or suitable habitats for other species.

## **INDIGENOUS PEOPLE (IPs)**

= INDIGENOUS CULTURAL COMMUNITIES

FR **Populations indigènes** – ES **Pueblos indígenas** – DE **Indigene Völker, Einheimische**

Indigenous communities, peoples and nations are those which, having a historical continuity with pre-invasion and pre-colonial societies that developed on their territories, consider themselves distinct from other sectors of the societies now prevailing in their territories, or parts of them. *[United Nations definition]*

Note: Other related terms include aborigines, native peoples, first peoples, first nations and autochthonous. Indigenous peoples may often be used in preference to these or other terms, as a neutral replacement where these terms may have taken on negative or pejorative connotations by their prior association and use. It is the preferred term in use by the United Nations and its subsidiary organizations.

## **INDIGENOUS SPECIES**

= NATIVE SPECIES

FR **Espèce indigène** - ES **Especie indigena** – DE **Einheimische Art**

A naturally occurring species.

Plants, animals, fungi and micro-organisms that occur historically and naturally in a given area or region. *[adapted from IUFRO, 2005]*

## **INFECTION**

FR **Infection** – ES **Infección** – DE **Infektion**

[OIE] The entry and development or multiplication of an infectious agent in the body of humans or animals. [OIE, 2014]

## **INFESTATION**

FR **Infestation** – ES **Infestación** – DE **Befall**

[OIE] The external invasion or colonization of animals or their immediate surroundings by arthropods, which may cause disease or are potential vectors of infectious agents. [OIE, 2014]

## **INSECTIVORE**

FR **Insectivore** - ES **Insectívoro** – DE **Insektenfresser**

A mammal or organism that feeds on insects. [*Envirothon*, 2013]

## **IN-SITU CONSERVATION**

FR **Conservation in situ** – ES **Conservación in situ** – DE **In-situ Erhaltung**

[CBD] The conservation of ecosystems and natural habitats and the maintenance and recovery of viable populations of species in their natural surroundings and, in the case of domesticated or cultivated species, in the surroundings where they have developed their distinctive properties. [*Article 2 of the Convention on Biological Diversity, 1992*]

## **INVASIVE ALIEN SPECIES**

FR **Espèce exotique envahissante** – ES **Especie exótica invasora** – DE **Invasive gebietsfremde Art, invasive nichtheimische Art**

[CBD] An alien species whose introduction and/or spread threaten biological diversity. (*For the purpose of the present guiding principles, the term "invasive alien species" shall be deemed the same as "alien invasive species" in decision V/8 of the Conference of the Parties to the Convention on Biological Diversity*).

## **INVASIVE SPECIES**

FR **Espèce envahissante** – ES **Especie invasora** – DE **invasive Art**

Organisms (usually transported by humans) which successfully establish themselves in, and then overcome pre-existing native ecosystems. [*IUCN/SSC*]

[FAO] Species that are non-native to a particular ecosystem and whose introduction and spread cause, or are likely to cause, socio-cultural, economic or environmental harm or harm to human health [*FRA 2015 Terms and Definitions*]

[IUCN] A subset of introduced species or non-native species that are rapidly expanding outside of their native range. Invasive species can alter ecological relationships among native species and can affect ecosystem function and human health. [*IUCN, 2015*]

## **INVERTEBRATE**

FR **Invertébré** – ES **Invertebrado** – DE **Wirbellose**

An animal without a backbone (spinal column). This group of animals includes butterflies, worms, insects, spiders, and aquatic species such as snails, crabs and jellyfish.

### **IUCN RED LIST OF THREATENED SPECIES**

FR **Liste rouge des espèces menacées de l’UICN** – ES

**Lista roja de especies amenazadas de la UICN** – DE

**Rote Liste der bedrohten Arten der IUCN**

[IUCN] A compendium of information on the taxonomy, conservation status and distribution of plants, fungi and animal species that have been globally evaluated using the IUCN Red List Categories and Criteria. This system is designed to determine the relative risk of extinction, and the main purpose of the IUCN Red List is to catalogue and highlight those plants and animals that are facing a higher risk of global extinction. [IUCN, 2014]

### **KEYSTONE SPECIES**

FR **Espèce clé** – ES **Especie clave** – DE **Schlüsselart**

A species whose loss from an ecosystem would cause a greater than average change in other species populations or ecosystems functions, processes and integrity; species that have a disproportionately large effect on other species in a community. [IUFRO, 2005]

[IUCN] A species that plays a large or critical role in supporting the integrity of its ecological community [IUCN, 2015]



## **KILLING**

FR **Mise à mort** - ES **Matanza** – DE **Tötung**

[OIE] Any procedure which causes the death of an animal.

[OIE, 2014]

## **LAIRAGE**

FR **Stabulation** - ES **Estabulación** - DE **Aufstallung**

[OIE] Pens, yards and other holding areas used for accommodating animals in order to give them necessary attention (such as water, feed, rest) before they are moved on or used for specific purposes including slaughter. [OIE, 2014]

## **LAND USE (CHANGE)**

FR **Utilisation des terres** – ES **Uso del suelo, uso de las tierras** – DE **Bodennutzung, Landnutzung**

The purpose for which land is used by humans, e.g. reserved areas, forest products, row-crop agriculture, pasture, and human settlement.

[UNEP] Involves the management and modification of natural environment or wilderness into built environment such as settlements and semi-natural habitats such as arable fields, pastures, and managed woods.

Note: Change in land use may not cause a significant change in land cover, e.g. change from some types of managed forest to reserved forest may not cause a significant change in cover compared with change from forest to cultivated land, but may result in changes to

relative density or prevalence of species living within the system.

### **LAW ENFORCEMENT**

FR **Respect des lois** - ES **Aplicación de la ley** - DE **Rechtsdurchsetzung**

The generic name for the activities of the agencies responsible for maintaining public order and enforcing the law, particularly the activities of prevention, detection, and investigation of crime and the apprehension of criminals.

### **LEAST CONCERN (LC)**

FR **Préoccupation mineure** - ES **Preocupación menor** - DE **Nicht gefährdet**

An IUCN Red List category. A taxon is *Least Concern* when it has been evaluated against the criteria and does not qualify for critically endangered, endangered, vulnerable or near threatened. Widespread and abundant taxa are included in this category [IUCN, 2012].

### **LIVELIHOODS**

FR **Moyens de subsistance** - ES **Medios de vida** - DE **Lebensunterhalt, Lebensgrundlage**

A livelihood comprises the capabilities, assets (including both material and soil resources) and activities required for a means of living. A livelihood is sustainable when it can cope with and recover from stress and shocks and maintain or enhance its capabilities and assets both now and in the

future, while not undermining the natural resource base.  
[Chambers & Conway, 1991]

See also **Alternative livelihoods**

## **LIVESTOCK**

FR **Bétail, cheptel** – ES **Ganadería, ganado** – DE **Vieh, Nutztiere**

Animals (such as cows, horses, and pigs) that are kept, raised, and used by people.

## **MATING SEASON**

FR **Saison des amours, période de reproduction** – ES **Temporada de acoplamiento, época de reproducción** – DE **Paarungszeit**

[FAO] The period during each year when a particular mammal, bird, reptile, amphibian, fish or invertebrate mates.

## **MEAT PRODUCTS**

FR **Produits à base de viande** – ES **Productos cárnicos** – DE **Fleisch- und Wurstwaren**

[OIE] Meat that has been subjected to a treatment irreversibly modifying its organoleptic and physicochemical characteristics. [OIE, 2014]

## **MIGRATION**

FR **Migration** - ES **Migración** - DE **Migration, Wanderung**

The movement of animals to and from feeding or reproductive and nesting areas. [*Envirothon, 2013*]

The movement of mammals, birds, reptiles, amphibians, fish or invertebrates in search of food or shelter, often on an annual basis according to the seasons.

## **MIGRATORY SPECIES**

FR **Espèce migratrice** - ES **Especie migratoria** - DE **wandernde Art**

[CMS] The entire population or any geographically separate part of the population of any species or lower taxon of wild animals, a significant proportion of whose members cyclically and predictably cross one or more national jurisdictional boundaries [*CMS Art. 1*]

## **MONITORING**

FR **Suivi** - ES **Seguimiento** - DE **Überwachung, Monitoring**

[OIE] The intermittent performance and analysis of routine measurements and observations, aimed at detecting changes in the environment or health status of a population. [*OIE, 2014*]

The continuous or frequent standardised measurement and observation of the environment (air, water, land/soil, biota), often used for warning and control. [*OECD, 2007*]

[IUCN] Regular, statistically designed counts of a population in order to watch its numbers, composition and distribution [IUCN, 2015]

### **NATIVE SPECIES**

= INDIGENOUS SPECIES

FR **Espèce indigène** - ES **Especie indigena, especie autóctona** – DE **Einheimische Art**

Any species of flora or fauna that naturally occurs in an area and that was not introduced by humans.

A species, subspecies, or lower taxon, occurring within its natural range (past or present) and dispersal potential (i.e. within the range it occupies naturally or could occupy without direct or indirect introduction or care by humans).

[FAO, 2010]

### **NATURAL HERITAGE**

FR **Patrimoine naturel** – ES **Patrimonio natural** – DE **Naturerbe**

Natural features consisting of physical and biological formations or groups of such formations, which are of outstanding universal value from the aesthetic or scientific point of view; geological and physiographical formations and precisely delineated areas which constitute the habitat of threatened species of animals and plants of outstanding universal value from the point of view of science or conservation; natural sites or precisely delineated natural areas of outstanding universal value from the point of view of science, conservation or natural beauty. [UNESCO, 1972]

### **NEAR THREATENED**

FR **quasi-menacé** – ES **casi amenazado** – DE **potentiell gefährdet**

[IUCN] An IUCN Red List category. A taxon is *Near Threatened* when it has been evaluated against the criteria but does not qualify for Critically Endangered, Endangered or Vulnerable now, but is close to qualifying for or is likely to qualify for a threatened category in the near future.

[IUCN, 2012]

### **NON CONSUMPTIVE USE**

FR **Utilisation non consommatrice** – ES **Usos no consuntivos** – DE **Nicht konsumtive Nutzung**

Any use of wildlife that does not directly kill wildlife.

### **NON-GAME**

= NONGAME

FR **Espèce non chassée, non-gibier** - ES **no de cacería**  
– DE **nicht bejagte Art**

Wildlife species that are not subject to legal hunting, fishing or harvesting. Wildlife species that are not generally hunted or consumed by humans. An example would be birds of prey.

### **OMNIVORE**

FR **Omnivore** – ES **Omnívoro** – DE **Allesfresser**

An animal that eats both animal and plant matter; a generalist, opportunistic feeder that eats whatever is available. [*USDA, 2013*]

A species whose diet includes both plants and animals.

## **OUTBREAK**

FR **Foyer** - ES **Brote** – DE **Ausbruch**

[OIE] The occurrence of one or more cases in an epidemiological unit. [*OIE, 2014*]

## **PANDEMICS**

FR **Pandémie** – ES **Pandemia** – DE **Pandemie**

An epidemic occurring worldwide, or over a very wide area, crossing international boundaries and usually affecting a large number of people. [*European Centre for Disease Prevention and Control, 2016*]

## **PARASITE**

FR **Parasite** – ES **Parásito** – DE **Parasit**

An often harmful organism that lives in or on another organism. For example, fleas are parasites. So are ticks.

An organism that lives by deriving benefit (usually doing harm) from another organism. [*Envirothon, 2013*]

## **PATHOLOGICAL MATERIAL**

FR **Matériel pathologique** - ES **Material patológico** - DE **Pathologisches Material**

[OIE] Samples obtained from live or dead animals, containing or suspected of containing infectious or parasitic agents, to be sent to a laboratory. [OIE, 2014]

## **POACHING**

FR **Braconnage** - ES **Caza furtiva** - DE **Wilderei**

The illegal shooting, trapping, or taking of game or fish from private or public property [West's Encyclopedia, 2008]

The illegal taking of **wildlife**, in violation of local, state, federal or international law. Activities that are considered poaching include killing an animal out of season, without a license, with a prohibited weapon, or in a prohibited manner such as jacklighting. Killing a protected species, exceeding one's bag limit or killing an animal while trespassing are also considered to be poaching.

## **POPULATION**

FR **Population** - ES **Población** - DE **Population**

The total number of individuals of a species. [adapted from Resolution Conf. 9.24 (Rev. CoP16), Annex 5]

[OIE] A group of units sharing a common defined characteristics. [OIE, 2014]

Factors regulating population levels including natality, productivity and mortality.



The term “population” is used in a specific sense in the Red List Criteria that is different to its common biological usage. Population is here defined as the total number of individuals of the taxon. For functional reasons, primarily owing to differences between life forms, population size is measured as numbers of mature individuals only. In the case of taxa obligatorily dependent on other taxa for all or part of their life cycles, biologically appropriate values for the host taxon should be used. (Source: IUCN 2001). The interpretation of this definition depends critically on an understanding of the definition of “mature individuals”.

See also ***Subpopulation***.

## **POPULATION DYNAMICS**

FR **Dynamique de population** - ES **Dinámica de población** - DE **Populationsdynamik**

It refers to the variation in the population size and also in sex-age compositions, reproduction and mortality rates, and qualities of animals in populations. It is the study of how this variation results from interactions among animals and between animals and their environment.

Is the study of changes in the number and composition of individuals in a population, and the factors that influence those changes. [*White, F.G.*]

## **PREDATOR**

FR **Prédateur** - ES **Depredador** - DE **Raubtier**

An organism that lives by preying on other organisms.

## **PREDATOR MANAGEMENT**

FR **Gestión des prédateurs** - ES **Gestión de depredadores, manejo de depredadores** – DE **Raubtiermanagement**

[CIC] Practices intended to manage the population of predators to benefit the owner's target wildlife population.

## **PRESERVATION**

FR **Préservation** - ES **Preservación** – DE **Erhaltung**

Is the protection of a resource by withdrawing it from human use. [USDA, 2013]

Protection of wildlife and habitat which emphasizes non-consumptive values and uses, such as no direct use by humans. Conservation, on the other hand, emphasizes both consumptive and non-consumptive use of resources.

## **PREVALENCE**

FR **Prévalence** – ES **Prevalencia** – DE **Prävalenz**

[OIE] The total number of cases or outbreak of a disease that are present in a population at risk, in a particular geographical area, at one specified time or during a given period. [OIE, 2014]

## **PREY**

FR **Proie** - ES **Presa** – DE **Beute**

An animal hunted or seized for food, especially by a carnivorous animal.

### **PREY DEPLETION**

FR **Epuisement des proies** – ES **Agotamiento de presas**  
– DE **Rückgang der Beutetiere**

The reduction of prey animals in a certain area for a certain wild animal, e.g. the tiger, causing an alarmingly low prey base.

### **PROPERTY RIGHT**

FR **Droit de propriété** – ES **Derecho de propiedad** – DE **Besitzrecht**

Theoretical socially-enforced constructs in economics for determining how a resource or economic good is used and owned. Resources can be owned by (and hence be the property of) individuals, associations or governments.

[UNEP] A property right is the exclusive authority to determine how a resource is used, whether that resource is owned by government or by individuals. Society approves the uses selected by the holder of the property right with governmental administered force and with social ostracism. If the resource is owned by the government, the agent who determines its use has to operate under a set of rules determined, in the United States, by Congress or by executive agencies it has charged with that role.

## **PROTECTED AREA**

FR **Aire protégée** – ES **Area protegida** – DE **Schutzgebiet**

[CBD] A geographically defined area which is designated or regulated and managed to achieve specific conservation objectives. [*Article 2 of the Convention on Biological Diversity, 1992*]

[IUCN] A clearly defined geographical space, recognized, dedicated and managed, through legal or other effective means, to achieve the long-term conservation of nature with associated ecosystem services and cultural values.

### Note:

Globally, the CBD and IUCN definitions are the most widely referenced definitions. There is tacit agreement between the CBD Secretariat and IUCN that both definitions effectively have the same meaning. [*Dudley, 2008*]

## **PROTECTION ZONE**

FR **Zone de protection** - ES **Zona de protección** – DE **Schutzgebiet**

[OIE] A zone established to protect the health status of animals in a free country or free zone, from those in a country or zone of a different animal health status, using measures based on the epidemiology of the disease under consideration to prevent spread of the causative pathogenic agent into a free country or free zone. These measures may include, but are not limited to, vaccination, movement control and an intensified degree of surveillance. [*OIE, 2014*]

## **QUARANTINE STATION**

**FR Station de quarantaine – ES Estación de cuarentena – DE Quarantänestation**

[OIE] An establishment under the control of the Veterinary Authority where animals are maintained in isolation with no direct or indirect contact with other animals, to ensure that there is no transmission of specified pathogen(s) outside the establishment while the animals are undergoing observation for a specified length of time and, if appropriate, testing and treatment. [OIE, 2014]

## **RANCHING**

**FR Elevage en ranch – ES cría en granjas – DE Farmaufzucht**

Rearing in a controlled environment of animals taken as eggs or juveniles from the wild, where they would otherwise have had a very low probability of surviving to adulthood.

[CITES] In the context of CITES, this term is used mainly in relation to populations of Appendix-I species of animals that are no longer endangered and that are transferred to Appendix II in accordance with Resolution Conf. 11.16 (Rev. CoP15), so that they may benefit from this form of management. In order to achieve adequate controls of trade in ranched specimens, parts and derivatives thereof are identified through a uniform marking system approved by the Conference of the Parties. This system may differ from species to species. Ranched species currently include only crocodylians, primarily ranched for their skins. [adapted from Resolution Conf. 11.16 (Rev. CoP15)]

## **RANGE**

FR **Aire de répartition, (aire de) distribution** – ES **Area de distribución** – DE **Verbreitungsgebiet, Areal**

The environmental conditions, or geographic area, within which a species occurs. [*Adapted from Ilaby M (ed) (2010) A Dictionary of Ecology, UK*]

In biology, the range or distribution of a species is the geographical area within which that species can be found, and accomplish its ecological niche.

[IUCN] The amount of space needed by an animal in order to meet its survival needs. [*IUCN, 2014*]

See also **home range**

## **RANGER**

FR **Garde forestier** - ES **Guarda forestal, guardabosque** – DE **Förster, Forst-, Waldaufseher**

Any of the officers employed by the government to supervise the care and preservation of forests, especially public forests.

[Mainly US & Canadian] A government official who patrols and protects forests, wildlife, etc.

## **RANGE STATE**

FR **Etat de l'aire de répartition** - ES **Estado del área de distribución** – DE **Arealstaat**

[CIC] Generally used in zoogeography and conservation biology to refer to any nation that exercises jurisdiction over

any part of a **range** which particular species, taxon or biotope inhabits, or crosses or overflies at any time on its normal migration route.

[CITES] [UNEP] A State whose territory is within the natural range of distribution of a species.

## **RAPTOR**

FR **Rapace** – ES **Raptor** – DE **Raubvogel**

A bird of prey (such as an eagle or hawk) that kills and eats other animals for food.

## **RARE SPECIES**

FR **Espèce rare** - ES **Especie escasa** – DE **seltene Art**

Wildlife species not presently endangered but with numbers so low that there is concern.

## **RECOLONIZATION**

FR **Reconstitution** – ES **Recolonización** – DE **Wiederbesiedelung**

[FAO] (Of a plant or animal species) Colonize a region or a habitat again.

Reoccupation by a taxon of an area, site, or habitat from which it had previously disappeared.

## **RECREATIONAL HUNTING**

FR **Chasse récréative** – ES **Caza recreativa** – DE **Freizeitjagd**

[CIC] Hunting where the hunter pursues the quarry (any type of huntable terrestrial vertebrates) primarily for recreation, - it does not necessarily need to include the killing of the quarry. It can involve a broad range of technologies in pursuit of the quarry, from more traditional bows and arrows, traps, dogs, falcons and ferrets, to more modern guns and rifles. The aim of recreational hunters may also be seeking a trophy or trophies, and/or meat for consumption, and/or to make a direct or indirect contribution to population management and habitat conservation goals. (*ZSL, 2009*)

## **REGENERATION RATE**

FR **Taux de régénération** – ES **Tasa de regeneración** - DE **Regenerationsrate**

The restoration or new growth by an organism of organs, tissues, etc., that have been lost, removed, or injured.

## **REGISTRATION**

FR **Enregistrement** - ES **Registro** – DE **Eintragung**

[OIE] The action by which information on animals (such as identification, animal health, movement, certification, epidemiology, establishments) is collected, recorded, securely stored and made appropriately accessible and able to be utilized by the Competent Authority. [*OIE, 2014*]



## **REGULATORS**

FR **Autorité de réglementation** – ES **Autoridad reguladora** - DE **Aufsichtsbehörde**

[IUCN] Government authorities at all levels with a responsibility for formulating, implementing and enforcing legislation and management policies pertaining to conservation and hunting. [*CIC, 2007*]

## **REINTRODUCTION**

FR **Réintroduction** – ES **Reintroducción** – DE **Auswilderung**

[IUCN] The release of individuals into a formerly occupied area after the native population have become extinct. An attempt to re-establish a taxon in an area which was once part of its historical range, but from which it has been extirpated or become extinct, often using individuals from collections. [*WAZA, 2005*]

The intentional movement and release of an organism inside its indigenous range from which it disappeared. [*IUCN Guidelines, 2013*]

Note: Reintroduction aims to re-establish a viable population of the focal species within its indigenous range.

## **RESIDENT HUNTING**

FR **Chasse de résident, chasse locale** – ES **Caza de residente/gente del lugar** – DE **Jagd durch Einheimische**

Conducted by hunters within their country of residence, and most commonly in the area where they physically reside and have hunting rights. Most resident hunters have strong socio-cultural ties to their hunting grounds, and are therefore highly motivated to apply their knowledge on local conditions and traditions to the conservation and management of local game species and their habitats. Emphasis is generally placed upon physical recreation, consumption, traditions, and management aspects of hunting. Local resident hunters may hold exclusive rights to their hunting grounds or pay reasonable fees to gain access through permits or leases. They usually do not require the services of hunting tour operators. Most hunters fall into this category, although many can also be hunting tourists at some point in their lives. [*European Charter, 2007*]

## **RESTORATION**

FR **Restauration** – ES **Restauración** – DE **Wiederherstellung**

Returning a resource to some prior condition by re-establishing ecological processes and functions. [*White, F.*]

The return of an ecosystem or habitat to its original community structure, natural complement of species, and natural functions.

## **RESTRAINT**

FR **Immobilisation** - ES **Sujeción** – DE **Immobilisation, Ruhigstellen, Fixierung**

[OIE] The application to an animal of any procedure designed to restrict its movements. [*OIE, 2014*]

## **RISK**

FR **Risque** - ES **Riesgo** – DE **Risiko**

[OIE] The likelihood of the occurrence and the likely magnitude of the biological and economic consequences of an adverse event or effect to animal or human health. [OIE, 2014]

The probability of harmful consequences, or expected losses (deaths, injuries, economic activity disrupted or environment damaged) resulting from interactions between natural or human-induced hazards and vulnerable conditions (ISDR, 2004)

Note: Conventionally, risk is expressed by the notation Risk = Hazards x Vulnerability of people, property, and the surrounding area; some disciplines also include the concept of exposure to refer particularly to the physical aspects of vulnerability.

Beyond expressing a possibility of physical harm, it is crucial to recognize that risks are inherent or can be created or exist within social systems. It is important to consider the social contexts in which risks occur and that people therefore do not necessarily share the same perceptions of risk and their underlying causes. [*Glossaire multilingue de la gestion du risqué, 2016*]

## **RISK COMMUNICATION**

FR **Communication relative au risque** - ES **Información sobre el riesgo** – DE **Risikokommunikation**

[OIE] The interactive transmission and exchange of information and opinions throughout the risk analysis process concerning risk, risk-related factors and risk

perceptions among risk assessors, risk managers, risk communicators, the general public and other interested parties. [OIE, 2014]

## **RISK MANAGEMENT**

FR **Gestion du risque, gestion des risques** – ES **Gestión del riesgo, manejo de riesgos** – DE **Risikomanagement**

[OIE] The process of identifying, selecting and implementing measures that can be applied to reduce the level of risk.

[OIE, 2014]

## **RURAL LIVELIHOOD**

FR **Moyens d'existence ruraux, subsistence en milieu rural** – ES **Sustento, medios de vida rurales** – DE **Existenzgrundlagen, ländliche Lebensgrundlagen**

[CIC] A person's livelihood refers to their "means of securing the basic necessities – food, water, shelter and clothing – of life.

A set of activities, involving securing water, food, fodder, medicine, shelter, clothing and the capacity to acquire above necessities working either individually or as a group by using endowments (both human and material) for meeting the requirements of the self and his/her household on a sustainable basis with dignity. The activities are usually carried out repeatedly. [Oxford Dictionary of English, 2011] For instance, a fisherman's livelihood depends on the availability and accessibility of fish.

## **SACRED SITE**

FR **Site sacré** - ES **Sitio sagrado** - DE **Kultstätte**

May refer to a site, object, structure, area or natural feature or area, held by national Governments or indigenous communities to be of particular importance in accordance with the customs of an indigenous or local community because of its religious and/or spiritual significance. [COP 7 Decision VII/16F, Article 8(j) and related provisions]

## **SAFARI PARK**

FR **Parc safari** - ES **Parque safari** - DE **Safaripark**

Specialized zoos where the captive animals are housed in any large naturalistic enclosures and the visitors are allowed to enter the enclosure to view the animals in a mechanized vehicle or a predetermined route from close quarters. [USDA, 2013]

(Sometimes known as a wildlife park) A zoo-like commercial tourist attraction where visitors can drive in their own vehicles or ride in vehicles provided by the facility to observe freely roaming animals. The main attractions are frequently large animals from Sub-Saharan Africa such as giraffes, lions, rhinoceros, elephants, zebras, ostriches, and antelope.

## **SEMI-TERRESTRIAL VERTEBRATES**

FR **Vertébrés semi-terrestres** - ES **Vertebrados semiterrestres** - DE **Semi-terrestrische Wirbeltiere**

Animals that spend much of their day on the ground but usually return to the trees to sleep. [O'Neill, 2012]

## **SEX RATIO**

FR **Rapport des sexes, sex-ratio** – ES **Razón de sexo, índice de masculinidad** – DE **Geschlechterverteilung**

The proportion of males to females in a *population*.

## **SHARED GOVERNANCE**

FR **Gouvernance partagée** - ES **Gestión compartida** – DE **Geteilte Verantwortung**

A professional practice model, founded on the cornerstone principles of partnership, equity, accountability, and ownership that form a culturally sensitive and empowering framework, enabling sustainable and accountability-based decisions to support an interdisciplinary work life.

## **SLAUGHTER**

FR **Abattage** – ES **Sacrificio**– DE **Schlachtung**

[OIE] Any procedure which causes the death of an animal by bleeding. [OIE, 2014]

Indiscriminate killing of large numbers of animals.

## **SMALL GAME**

FR **Petit gibier** - ES **Caza menor** – DE **Niederwild**

Smaller hunted species. Examples are rabbits, squirrels, pheasant, quail, and groundhog. [USDA, 2013]

Animals with a live weight normally less than around 20 kilos, like rabbits, hares, squirrels, pheasants, partridge and quails. [*OIE, 2017*]

## **SOCIAL IMPACT ASSESSMENT**

FR **Evaluation de l'impact social** - ES **Evaluación del impacto social** – DE **Sozialverträglichkeit**

A process of evaluating the likely impacts, both beneficial and adverse, of a proposed development that may affect the rights, which have an economic, social, cultural, civic and political dimension, as well as the well-being, vitality and viability, of an affected community – that is, the quality of life of a community as measured in terms of various socio-economic indicators, such as income distribution, physical and social integrity and protection of individuals and communities, employment levels and opportunities, health and welfare, education, and availability and standards of housing and accommodation, infrastructure, services. [*COP 7 Decision VII/16F, Article 8(j) and related provisions*]

## **SPECIES**

FR **Espèce** – ES **Especie** – DE **Art**

Groups of actually or potentially interbreeding natural populations, which are reproductively isolated from other such groups. [*Mayr E, 1942*]

## **SPECIES DIVERSITY**

FR **Diversité des espèces** – ES **Diversidad de especies** – DE **Artenvielfalt**

[UNEP] All the different species, as well as the differences within and between different species.

### **SPECIES OF SPECIAL CONCERN (SC)**

FR **Espèce préoccupante** - ES **Especie de preocupación especial** – DE **Art von besonderer Bedeutung**

Species that are considered vulnerable to large-scale population declines. This category is not as severe as endangered or threatened. [*Envirothon, 2013*]

A wildlife species that may become **threatened** or **endangered** because of a combination of biological characteristics and identified threats. [*COSEPAC, 2015*]

### **SPECIES RICHNESS**

FR **Richesse en espèces** - ES **Riqueza de especies** – DE **Artenvielfalt**

The number of species within a given sample, community or area. [*UNEP, 2007*]

The number of wildlife species found in a given area.

### **SPORT HUNTING**

= TROPHY HUNTING, = SAFARI HUNTING

FR **Chasse sportive** – ES **Caza deportiva** – DE **Trophäenjagd**

Sport shooting, or trophy hunting is when the hunting (shooting) is the major reason for this type of hunting and sometimes to acquire a trophy, although the meat, skin and



other parts of the killed animal also can be utilized. [OIE, 2017]

[CITES] **Trophy hunting** is defined as a specific and selective legal form of wildlife use that involves payment for a hunting experience and the acquisition of a trophy by the hunter.

Note:

In European nomenclature *Sport hunting* and *Trophy hunting* is not the same thing. Pheasant shooting can be regarded as sport shooting (hunting) but there are no trophies in pheasant shooting.

Note:

Trophy hunting has firm supporters and opponents. Public debate about trophy hunting often centres on the question of the morality of sport hunting and the question of the extent to which the money paid by trophy hunters benefits the population of game animals and the local economy.

## **STAMPING-OUT POLICY**

FR **Abattage sanitaire** – ES **Sacrificio sanitario** – DE **Tilgungsprogramm, Schlachtung aus gesundheitlichen Gründen**

[OIE] Carrying out under the authority of the Veterinary Authority, on confirmation of a disease, the killing of the animals which are affected and those suspected of being affected in the herd and, where appropriate, those in other herds which have been exposed to **infection** by direct animal to animal contact, or by indirect contact with the causal pathogen. All susceptible animals, vaccinated or unvaccinated, on infected establishments should be killed and their carcasses destroyed by burning or burial, or by

any other method which will eliminate the spread of infection through the carcasses or products of the animals killed.

This policy should be accompanied by the cleansing and disinfection procedures defined in the Terrestrial Code. The terms modified stamping-out policy should be used in communications to the OIE whenever the above animal health measures are not implemented in full and details in the modifications should be given. [OIE, 2014]

### **STEWARD OF WILDLIFE**

FR **Garde-faune, Surveillant de la faune** - ES **Custodio de la vida salvaje** – DE **Wildhüter**

A wildlife manager or wildlife rehabilitator, i.e. a person employed to take care of game and **wildlife**.

Note: As an example, “Stewards of the Wild” is a young professionals program supporting the mission of Texas Parks and Wildlife Foundation and Texas Parks and Wildlife Department. With member-led chapters in major cities throughout the state, Stewards of the Wild chapters engage 21-45 year-old outdoor enthusiasts by hosting exclusive events to raise awareness of conservation issues facing future generations.

Note:

In the USA, a **game warden** is a regulatory official, much like the police, who enforces laws and regulations regarding wildlife, such as limits on number of wild animals that may be taken or methods of taking wild animals.

## **STOCKING DENSITY**

FR **Densité de chargement** – ES **Densidad de carga** – DE **Besatzdichte**

The number of body weight of animals per unit area on a vehicle/vessel or container. [OIE, 2014]

The density of livestock at a specified site, expressed as numbers of animals or as Livestock Units.

## **STRATEGIC ENVIRONMENTAL ASSESSMENT**

FR **Evaluation stratégique de l'environnement** - ES **Evaluación estratégica ambiental** – DE **Strategische Umweltverträglichkeitsprüfung**

A process of evaluating the likely environmental impacts of proposed policies, plans or programmes to ensure that they are fully included and addressed at an early stage of decision-making, together with economic, social and cultural considerations. [COP 7 Decision VII/16F, Article 8(j) and related provisions]

## **SUBPOPULATION**

FR **Sous-population** - ES **Subpoblación** – DE **Subpopulation**

[OIE] A distinct part of a population identifiable according to specific common animal health characteristics. [OIE, 2014]

Geographically or otherwise distinct groups in the population between which there is little demographic or genetic exchange (typically one successful migrant individual or gamete per year or less). [IUCN, 2012]

[UNEP] A geographically or otherwise distinct group which has little exchange with other groups in the population. *(adapted from Resolution Conf. 9.24 (Rev. CoP16), Annex 5)*

## **SUBSISTENCE HUNTING**

FR **Chasse de subsistance** – ES **Caza de subsistencia**  
- DE **Jagd für den Lebensunterhalt**

[CIC] Practiced by local and indigenous people, to provide meat for food; and is part of the traditions and customs of many indigenous groups all over the world. For most, subsistence hunting is critical to their nutrition, food security, and livelihoods.

Subsistence hunters hunt strictly to provide food and other products from the animals for themselves and their families. Simply put, it is hunting for survival.

## **SURVEILLANCE**

FR **Surveillance** - ES **Vigilancia** – DE **Überwachung**

[OIE] The systematic ongoing collection, collation, and analysis of information related to animal health and the timely dissemination of information so that action can be taken. [OIE, 2014]

System involving the continuous observation, measurement and evaluation of the progress of a process or phenomenon with the view to taking corrective measures; Examples: surveillance of the water quality of a river, of air pollution, of health.

## **SUSTAINABLE HUNTING**

FR **Chasse durable** – ES **Caza sostenible** – DE **Nachhaltige Jagd**

[IUCN] The use of wild game species and their **habitats** in a way and at a rate that does not lead to the long-term decline of biodiversity or hinder its restoration. Such use maintains the potential of biodiversity to meet the needs and aspirations of present and future generations, as well as maintaining hunting itself as an accepted social, economic and cultural activity (based on the definition of "Sustainable Use" in Article 2 of the Convention on Biological Diversity).

When hunting is conducted in such a sustainable manner, it can positively contribute to the conservation of wild populations and their habitats and also benefit society.  
[*European Charter, 2007*]

The use of components of biological diversity in a way and at a rate that does not lead to the long-term decline of biological diversity, thereby maintaining its potential to meet the needs and aspirations of present and future generations.

## **SUSTAINABLE LIVELIHOOD**

FR **Moyens de subsistance durables** – ES **Medios de vida sostenibles** – DE **Nachhaltiger Lebensunterhalt**

[UNEP] A livelihood is sustainable when it can cope with and recover from stresses and shocks, maintain or enhance its capabilities and assets, while not undermining the natural resource base.

## **SUSTAINABLE TOURISM**

FR **Tourisme durable** – ES **Turismo sostenible** – DE **Nachhaltiger Tourismus**

[UNEP] Tourism committed to generating a low impact on the surrounding environment and community by acting responsibly while generating income and employment for the local economy and aiding social cohesion.

Note: Sustainable tourism requires the informed participation of all relevant stakeholders, as well as strong political leadership to ensure wide participation and consensus building. Achieving sustainable tourism is a continuous process and it requires constant **monitoring** of impacts, introducing necessary preventive and/or corrective measures whenever necessary. [UNEP, 2016]

Note: Tourism can cause its share of problems, such as social dislocation, loss of cultural heritage, economic dependence and ecological degradation. Learning about the impacts of tourism has led many people to seek more responsible holidays. These include various forms of alternative or sustainable tourism such as: “nature-based tourism”, ecotourism” and “cultural tourism”. [UNEP, 2016]

## **SUSTAINABLE USE**

FR **Utilisation durable** – ES **Utilización sostenible** – DE **Nachhaltige Nutzung**

[CBD] [CITES] The use of components of biological diversity in a way and at a rate that does not lead to the long-term decline of biological diversity, thereby maintaining its potential to meet the needs and aspirations of present and future generations. [Article 2 of the Convention on Biological Diversity]

## **SUSTAINABLE WILDLIFE MANAGEMENT**

FR **Gestion durable de la vie sauvage** - ES **Gestión sostenible de la vida salvaje** – DE **Nachhaltiges Wildtiermanagement**

[CPW] The sound management of wildlife species to sustain their populations and habitat over time, taking into account the socioeconomic needs of human populations. This requires that all land-users within the wildlife habitat are aware of and consider the effects of their activities on the wildlife resources and habitat, and on other user groups.

*[CPW Fact sheet 1-4]*

## **TAKING**

FR **Prise** – ES **Captura** – DE **Entnahme**

Taking, hunting, fishing capturing, harassing, deliberate killing, or attempting to engage in any such conduct. [*CMS Art. 1*]

Pursuing, shooting, hunting, killing, capturing, trapping, disturbing, harrying, worrying, or wounding snaring and netting fish, birds and quadrupeds and all lesser acts including placing, setting, drawing or using any net or other device commonly used to take fish or wild animals, whether they result in taking or not. It includes every attempt to take and every act of assistance to another person in taking or attempting to take fish or wild animals. [*USDA, 2013*]

## **TAXONOMY**

FR **Taxonomie** – ES **Taxonomía** – DE **Taxonomie**

A system of nested categories (taxa) reflecting evolutionary relationships or morphological similarities. [UNEP, 2007]

The science of classifying and naming organisms.

### **TERRESTRIAL VERTEBRATES**

FR **Vertébrés terrestres** – ES **Vertebrados terrestres** –  
DE **Terrestrische Wirbeltiere**

[FAO] Land based vertebrates, not a bird or fish.

### **TERRITORY**

FR **Territoire** – ES **Territorio** – DE **Revier**

Part or all of the home range that is defended to the exclusion of other animals, especially conspecifics. Territories may be defended by individuals, breeding pairs or social groups, either year-round or seasonally.

The concept of dominance over a unit of habitat; an area defended by an animal against others of the same species, or sometimes other species; can be defended for breeding, feeding, courtship, or other reasons. [Envirothon, 2013]

### **THREATENED SPECIES**

FR **Espèce menacée** - ES **Especie amenazada/en peligro** – DE **bedrohte Art**

A **species** that is likely to become endangered within the foreseeable future, throughout all or a significant portion of its range. [CMS Article 1]



[IUCN] Umbrella term for any species categorised as Critically Endangered, Endangered or Vulnerable by the ***IUCN Red List of Threatened Species***. [IUCN, 2012]

## **TRADE OFF**

FR **Compromis** – ES **Compensación** – DE **Kompromiss**

A balance achieved between two desirable but incompatible features; a compromise. A situation in which you must choose between or balance two things that are opposite or cannot be had at the same time.

Note: Something that you do not want but must accept in order to have something that you want. [UNEP, 2016]

## **TRADITIONAL KNOWLEDGE (TK)**

= INDIGENOUS KNOWLEDGE (IK)

FR **Savoir traditionnel** – ES **Conocimiento tradicional** – DE **Traditionelles Wissen, indigenes Wissen**

A cumulative body of knowledge, know-how, practices and representations maintained and developed by peoples with long histories of interaction with their natural environment.

Note: TK is generally transmitted orally and experientially, and not written. It is learned through hands-on experience and not taught in abstract context. It is holistic, non-linear, and not reductionist in approach. It is qualitative and in the intuitive thinking mode, and quantitative or in the analytical mode. [IUFRO, 2005]

The knowledge, innovations and practices of indigenous people and local communities embodying traditional

lifestyles relevant for the conservation and sustainable use of biological diversity. [COP 7 Decision VII/16F, Article 8(j) and related provisions]

### **TRADITIONAL MEDICINE**

FR **Remède traditionnel, médecine traditionnelle** – ES **Medicina tradicional** – DE **Traditionelle Medizin**

The medicinal preparations, often based on centuries-old traditions, that contain derivatives from plants or animals that have proven or reputed medicinal properties.

The science or practice of restoring and preserving health based on such preparations.

### **TRANSFRONTIER CONSERVATION AREA**

= TRANSBOUNDARY PROTECTED AREA

FR **Aire de conservation transfrontalière** – ES **Área de conservación transfronteriza** – DE **Grenzüberschreitendes Naturschutzgebiet**

A Protected Area extending across national boundaries of two or more countries.

### **TRANSLOCATION**

FR **Translocation, transfert** - ES **Translocación, traslado, desplazamiento** – DE **Translokation, Umsiedlung**

[IUCN] The human-mediated movement of living organisms from one area, with release<sup>3</sup> in another. [*IUCN Guidelines, 2013*]

[CPW] involving moving animals from a problematic zone to a new site, has been used with animals such as elephants, crocodiles and big cats. While sometimes effective, it is expensive, may simply export the problem elsewhere, and, for animals with strong homing instincts, may lead to animals returning to the same area. [*CPW Fact sheet 4*]

## **TRANSPARENCY**

FR **Transparence** - ES **Transparencia** - DE **Transparenz**

[OIE] The comprehensive documentation of all data, information, assumptions, methods, results, discussion and conclusions used in the risk analysis. Conclusions should be supported by an objective and logical discussion and the document should be fully referenced. [*OIE, 2014*]

## **TRANSPORT**

FR **Transport** - ES **Transporte** - DE **Transport**

[OIE] The procedures associated with the carrying of animals for commercial purposes from one location to another by any means. [*OIE, 2014*]

---

<sup>3</sup> 'release' is applicable here to individuals of any taxon.

## **TROPHY**

FR **Trophée** – ES **Trofeo** – DE **Trophäe**

[CITES] A whole animal, or a readily recognizable part or derivative or an animal that:

- 1) Is raw, processed or manufactured;
- 2) Was legally obtained by the hunter through hunting for the hunter's personal use; and
- 3) Is being imported, exported or re-exported by or on behalf of the hunter, as part of the transfer from its country of origin, ultimately to the hunter's State of usual residence. [*Resolution Conf. 12.3 – Rev. CoP16, Section 1*]

## **TROPHY HUNTING**

FR **Chasse au trophée** – ES **Caza de trofeo** - DE **Trophäenjagd**

See *sport hunting*.

## **UNGULATES**

FR **Ongulés** - ES **Ungulados** – DE **Huftier**

[FAO] Animals with hooves, such as buffalo, antelope, deer, moose, caribou, swine, and elk.

## **UPLAND GAME**

FR **Gibier des hautes terres** – ES **Cacería en tierras altas** - DE **Hochland-Jagd**

Game species whose habitat needs are usually found in upland areas. [*Envirothon, 2013*]

## **VACCINATION**

FR **Vaccination** - ES **Vacunación** – DE **Impfung**

[OIE] The successful immunisation of susceptible animals through the administration, according to the manufacturer's instructions and the Terrestrial Manual, where relevant, of a vaccine comprising antigens appropriate to the disease to be controlled. [OIE, 2014]

## **VECTOR**

FR **Vecteur** – ES **Vector** – DE **Vektor**

[OIE] An insect or any living carrier that transports an infectious agent from an infected individual to a susceptible individual or its food or immediate surroundings. The organism may or may not pass through a development cycle within the vector. [OIE, 2014]

## **VETERINARY AUTHORITY**

FR **Autorité vétérinaire** - ES **Autoridad veterinaria** – DE **Veterinärbehörde**

[OIE] The Governmental Authority of a Member Country, comprising veterinarians, other professionals and para-professionals, having the responsibility and competence for ensuring or supervising the implementation of animal health and welfare measures, international veterinary certification and other standards and recommendations in the Terrestrial Code in the whole territory. [OIE, 2014]

## **VIABLE POPULATION**

FR **Population viable** - ES **Población viable** – DE **Lebensfähige Population**

A self-supporting population with sufficient numbers and genetic variability among healthy individuals and breeding pairs that are well enough distributed to ensure a high probability of survival. [UNEP, WCMC Biodiversity Terms]

## **VULNERABLE**

FR (**Espèce**) **vulnérable** - ES (**Especie**) **vulnerable** – DE **verwundbar(e Art)**

An IUCN Red List category. A taxon is *Vulnerable* when the best available evidence indicates it is therefore considered to be facing a high risk of extinction in the wild. [IUCN, 2012]

## **WATERFOWL**

FR **Oiseaux aquatiques, sauvages** – ES **Aves acuáticas** – DE **Wasservögel**

Water birds, usually referring to ducks, geese and swans. [Envirothon, 2013]

## **WILD ANIMAL**

FR **Animal sauvage** - ES **Animal salvaje** – DE **Wildtier**

[OIE] An animal that has a phenotype unaffected by human selection and lives independent of direct human supervision or control. [OIE, 2014]

## **WILDLIFE**

FR **Faune sauvage** – ES **Fauna silvestre** – DE **Wildtiere**

Living, non-domesticated animals.

[OIE] means **feral** animals, captive wild animals and wild animals. [OIE, 2014]

[IUCN] Living things that are neither human nor domesticated [IUCN, 2015]

## **WILDLIFE CONSERVATION**

FR **Conservation de la faune sauvage** – ES **Conservación de la fauna silvestre** – DE **Wildtiererhaltung**

[CIC] A suite of adaptive wildlife management processes to restore or maintain indigenous wildlife species in diverse landscapes and habitats for the benefit of people.

Activity to maintain long-term wildlife population and their habitats within ecological limits with its resilience. [Wollscheid, 2015]

## **WILDLIFE MANAGEMENT**

FR **Gestion de la faune sauvage** – ES **Gestión de la vida silvestre, manejo de vida silvestre** – DE **Wildtiermanagement**

The guidance of decision-making processes and the implementation of practices to purposefully influence the interactions among and between people, **wildlife** and their **habitats** to achieve impacts valued by stakeholders'. [Riley et al., 2002]

[IUCN] The application of science-based and local knowledge in the stewardship of wild (including game) animal populations and their habitats in a manner beneficial to the environment and society.

### **WILDLIFE MANAGER**

FR **Gestionnaire de la faune** - ES **Gerente** - DE **Wildtier-Manager, Geschäftsführer**

[IUCN] Private or governmental agents, including land-owners, who are responsible for the practical stewardship of wildlife stocks and their habitats. [*European Charter on Hunting and Biodiversity, 2007*]

### **WILDLIFE TRADE**

FR **Commerce d'animaux sauvages** - ES **Comercio de vida silvestre** - DE **Handel mit Wildtieren**

Any sale or exchange of wild animal and plant resources by people. This can involve live animals and plants or a diverse range of products needed or prized by humans—including skins, medicinal ingredients, tourist curios, timber, fish and other food products. [*Traffic International, 2008*]

#### Note:

Under CITES, any international movement of animals and plants is defined as trade, including (repeated) movements of companion animals. It also includes scientific samples (blood, feathers).



## **WILD MEAT**

FR **Viande de brousse** – ES **Carne de de fauna silvestre**  
– DE **Wildfleisch**

See ***bushmeat***.

## **WISE USE**

FR **Utilisation rationnelle** – ES **Uso racional** – DE  
**Sinnvolle Nutzung**

The maintenance of the ecological character, achieved through the implementation of ecosystem approaches, within the context of sustainable development. [*Ramsar Convention, 2010*]

## **ZOONOSIS**

FR **Zoonose** – ES **Zoonosis** – DE **Zoonose**

Any disease or infection which is naturally transmissible from animals to humans. [*OIE, 2014*]

A disease or infection that can be transmitted between animals and humans.

## INDEX

<b>ACCESS AND BENEFIT SHARING</b>	<b>1</b>
<b>ADAPTATION</b>	<b>1</b>
<b>ADAPTIVE MANAGEMENT</b>	<b>2</b>
<b>AGRICULTURAL INTENSIFICATION</b>	<b>2</b>
<b>ALIEN SPECIES</b>	<b>3</b>
<b>ALTERNATIVE LIVELIHOODS</b>	<b>3</b>
<b>ANIMAL IDENTIFICATION</b>	<b>4</b>
<b>ANIMAL TRACEABILITY</b>	<b>4</b>
<b>ANIMAL WELFARE</b>	<b>4</b>
<b>BENEFIT SHARING</b>	<b>5</b>
<b>BIG GAME</b>	<b>5</b>
<b>BIOLOGICAL DIVERSITY</b>	<b>5</b>
<b>BIOLOGICAL RESOURCES</b>	<b>6</b>
<b>BIOSECURITY PLAN</b>	<b>6</b>
<b>BIOTECHNOLOGY</b>	<b>6</b>
<b>BUFFER ZONE</b>	<b>7</b>
<b>BUSH MEAT</b>	<b>7</b>
Bushmeat = bush meat	7
<b>BUSHMEAT HUNTING</b>	<b>8</b>
<b>CANNED HUNT(ING)</b>	<b>8</b>
<b>CAPTIVE WILD ANIMAL</b>	<b>8</b>
<b>CARNIVORE</b>	<b>9</b>
<b>CARRYING CAPACITY</b>	<b>9</b>
<b>CATCH-AND-RELEASE</b>	<b>10</b>
<b>COMMENSAL</b>	<b>10</b>
<b>COMMERCIAL HUNTING</b>	<b>10</b>
<b>COMMUNITY BASED CONSERVATION</b>	<b>11</b>
<b>COMMUNITY BASED NATURAL RESOURCE MANAGEMENT</b>	<b>11</b>
<b>COMMUNITY BASED WILDLIFE MANAGE- MENT</b>	<b>12</b>
<b>CONSERVATION</b>	<b>12</b>
<b>CONSERVATION HUNTING</b>	<b>13</b>

<b>CONSUMPTIVE USE</b>	<b>13</b>
<b>CONTAINMENT ZONE</b>	<b>14</b>
<b>CONTIGUOUS FOREST</b>	<b>14</b>
<b>CORRIDOR</b>	<b>15</b>
<b>CRITICAL AREA</b>	<b>15</b>
<b>CRITICAL HABITAT</b>	<b>16</b>
<b>CRITICALLY ENDANGERED</b>	<b>16</b>
Cultivated species = <b>domesticated species</b>	20
<b>CULTURAL HERITAGE IMPACT ASSESSMENT</b>	<b>16</b>
<b>CULTURAL IMPACT ASSESSMENT</b>	<b>17</b>
<b>CUSTOMARY LAW</b>	<b>17</b>
<b>DATA DEFICIENT</b>	<b>18</b>
<b>DEFORESTATION</b>	<b>18</b>
<b>DEPREDATION</b>	<b>18</b>
<b>DISEASE VECTOR</b>	<b>19</b>
<b>DISINFECTION</b>	<b>19</b>
<b>DISINFESTATION</b>	<b>19</b>
<b>DISPERSAL</b>	<b>20</b>
<b>DOMESTICATED SPECIES</b>	<b>20</b>
<b>DOMESTICATION</b>	<b>20</b>
<b>DRIVEN HUNT</b>	<b>21</b>
Driving = <b>driven hunt</b>	21
<b>ECOLOGICAL NICHE</b>	<b>21</b>
<b>ECOSYSTEM</b>	<b>22</b>
Ecosystem-based management = <b>ecosystem management</b>	23
<b>ECOSYSTEM DIVERSITY</b>	<b>22</b>
<b>ECOSYSTEM MANAGEMENT</b>	<b>23</b>
<b>ECOSYSTEM RESILIENCE</b>	<b>24</b>
<b>ECOSYSTEM SERVICES</b>	<b>24</b>
<b>ECO-TOURISM</b>	<b>25</b>
<b>EMPOWERMENT</b>	<b>25</b>
<b>ENDANGERED</b>	<b>25</b>
<b>ENDEMIC SPECIES</b>	<b>25</b>
<b>ENVIRONMENTAL IMPACT ASSESSMENT</b>	<b>26</b>

<b>ERADICATION</b>	<b>26</b>
<b>ETHOLOGY</b>	<b>27</b>
<b>EXOTIC SPECIES</b>	<b>27</b>
<b>EX-SITU CONSERVATION</b>	<b>27</b>
<b>EXTINCT</b>	<b>28</b>
<b>EXTINCT IN THE WILD</b>	<b>28</b>
<b>EXTINCTION</b>	<b>29</b>
<b>FAIR-CHASE HUNTING</b>	<b>29</b>
<b>FERAL ANIMAL</b>	<b>29</b>
<b>FISHING TOURISM</b>	<b>30</b>
<b>FLAGSHIP SPECIES</b>	<b>30</b>
<b>FLOCK</b>	<b>31</b>
<b>FLYWAY</b>	<b>31</b>
<b>FOOD CHAIN</b>	<b>31</b>
<b>FOOD SECURITY</b>	<b>32</b>
<b>FORAGE</b>	<b>32</b>
<b>FOREST DEGRADATION</b>	<b>33</b>
<b>FOREST GAME</b>	<b>33</b>
<b>FREE-RANGE</b>	<b>33</b>
Free-ranging = <b>free range</b>	<b>33</b>
<b>FRESH MEAT</b>	<b>34</b>
<b>GAME</b>	<b>34</b>
Game meat = <b>bush meat</b>	<b>7</b>
<b>GAME-MEAT HYGIENE</b>	<b>34</b>
Game warden -> <b>steward of wildlife</b>	<b>72</b>
<b>GENETIC DIVERSITY</b>	<b>35</b>
<b>GENETIC MATERIAL</b>	<b>35</b>
<b>GENETIC RESOURCES</b>	<b>35</b>
<b>HABITAT</b>	<b>35</b>
<b>HABITAT LOSS</b>	<b>36</b>
<b>HARVEST</b>	<b>37</b>
<b>HAZARD</b>	<b>37</b>
<b>HERBIVORE</b>	<b>37</b>
<b>HERD</b>	<b>38</b>

<b>HOME RANGE</b>	<b>38</b>
<b>HOMING</b>	<b>38</b>
<b>HUMAN-WILDLIFE CONFLICT</b>	<b>39</b>
<b>HUNTING</b>	<b>40</b>
<b>HUNTING TOURISM</b>	<b>40</b>
<b>ILLEGAL TRADE</b>	<b>41</b>
<b>INBREEDING</b>	<b>41</b>
<b>INCIDENCE</b>	<b>42</b>
<b>INCUBATION PERIOD</b>	<b>42</b>
<b>INDICATOR SPECIES</b>	<b>42</b>
<b>INDIGENOUS PEOPLE</b>	<b>43</b>
<b>INDIGENOUS SPECIES</b>	<b>43</b>
<b>INFECTION</b>	<b>44</b>
<b>INFESTATION</b>	<b>44</b>
<b>INSECTIVORE</b>	<b>44</b>
<b>IN-SITU CONSERVATION</b>	<b>44</b>
Introduced species = alien species	1
<b>INVASIVE ALIEN SPECIES</b>	<b>45</b>
<b>INVASIVE SPECIES</b>	<b>45</b>
<b>INVERTEBRATE</b>	<b>45</b>
<b>IUCN RED LIST OF THREATENED SPECIES</b>	<b>46</b>
<b>KEYSTONE SPECIES</b>	<b>46</b>
<b>KILLING</b>	<b>47</b>
<b>LAIRAGE</b>	<b>47</b>
<b>LAND USE (CHANGE)</b>	<b>47</b>
<b>LAW ENFORCEMENT</b>	<b>48</b>
<b>LEAST CONCERN</b>	<b>48</b>
<b>LIVELIHOODS</b>	<b>48</b>
<b>LIVESTOCK</b>	<b>49</b>
<b>MATING SEASON</b>	<b>49</b>
<b>MEAT PRODUCTS</b>	<b>49</b>
<b>MIGRATION</b>	<b>50</b>
<b>MIGRATORY SPECIES</b>	<b>50</b>

<b>MONITORING</b>	<b>50</b>
<b>NATIVE SPECIES</b>	<b>51</b>
<b>NATURAL HERITAGE</b>	<b>51</b>
<b>NEAR THREATENED</b>	<b>52</b>
Non-native species = alien species	1
<b>NON CONSUMPTIVE USE</b>	<b>52</b>
<b>NON-GAME</b>	<b>52</b>
<b>OMNIVORE</b>	<b>52</b>
<b>OUTBREAK</b>	<b>53</b>
<b>PANDEMICS</b>	<b>53</b>
<b>PARASITE</b>	<b>53</b>
<b>PATHOLOGICAL MATERIAL</b>	<b>54</b>
<b>POACHING</b>	<b>54</b>
<b>POPULATION</b>	<b>54</b>
<b>POPULATION DYNAMICS</b>	<b>55</b>
<b>PREDATOR</b>	<b>55</b>
<b>PREDATOR MANAGEMENT</b>	<b>55</b>
<b>PRESERVATION</b>	<b>56</b>
<b>PREVALENCE</b>	<b>56</b>
<b>PREY</b>	<b>56</b>
<b>PREY DEPLETION</b>	<b>57</b>
<b>PROPERTY RIGHT</b>	<b>57</b>
<b>PROTECTED AREA</b>	<b>58</b>
<b>PROTECTION ZONE</b>	<b>58</b>
<b>QUARANTINE STATION</b>	<b>59</b>
<b>RANCHING</b>	<b>59</b>
<b>RANGE</b>	<b>60</b>
<b>RANGER</b>	<b>60</b>
<b>RANGE STATE</b>	<b>60</b>
<b>RAPTOR</b>	<b>60</b>
<b>RARE SPECIES</b>	<b>61</b>
<b>RECOLONIZATION</b>	<b>61</b>

<b>RECREATIONAL HUNTING</b>	<b>62</b>
<b>REGENERATION RATE</b>	<b>62</b>
<b>REGISTRATION</b>	<b>62</b>
<b>REGULATORS</b>	<b>63</b>
<b>REINTRODUCTION</b>	<b>63</b>
<b>RESIDENT HUNTING</b>	<b>63</b>
<b>RESTORATION</b>	<b>64</b>
<b>RESTRAINT</b>	<b>64</b>
<b>RISK</b>	<b>65</b>
<b>RISK COMMUNICATION</b>	<b>65</b>
<b>RISK MANAGEMENT</b>	<b>66</b>
<b>RURAL LIVELIHOOD</b>	<b>66</b>
<b>SACRED SITE</b>	<b>67</b>
<b>SAFARI PARK</b>	<b>67</b>
<b>SEMI-TERRESTRIAL VERTEBRATES</b>	<b>67</b>
<b>SEX RATIO</b>	<b>68</b>
<b>SHARED GOVERNANCE</b>	<b>68</b>
<b>SLAUGHTER</b>	<b>68</b>
<b>SMALL GAME</b>	<b>68</b>
<b>SOCIAL IMPACT ASSESSMENT</b>	<b>69</b>
<b>SPECIES</b>	<b>69</b>
<b>SPECIES DIVERSITY</b>	<b>69</b>
<b>SPECIES OF SPECIAL CONCERN</b>	<b>70</b>
<b>SPECIES RICHNESS</b>	<b>70</b>
<b>SPORT HUNTING</b>	<b>70</b>
<b>STAMPING-OUT POLICY</b>	<b>71</b>
<b>STEWARD OF WILDLIFE</b>	<b>72</b>
<b>STOCKING DENSITY</b>	<b>73</b>
<b>STRATEGIC ENVIRONMENTAL ASSESSMENT</b>	<b>73</b>
<b>SUBPOPULATION</b>	<b>73</b>
<b>SUBSISTENCE HUNTING</b>	<b>74</b>
<b>SURVEILLANCE</b>	<b>74</b>
<b>SUSTAINABLE HUNTING</b>	<b>75</b>
<b>SUSTAINABLE LIVELIHOOD</b>	<b>75</b>
<b>SUSTAINABLE TOURISM</b>	<b>76</b>

<b>SUSTAINABLE USE</b>	<b>76</b>
<b>SUSTAINABLE WILDLIFE MANAGEMENT</b>	<b>77</b>
<b>TAKING</b>	<b>77</b>
<b>TAXONOMY</b>	<b>77</b>
<b>TERRESTRIAL VERTEBRATES</b>	<b>78</b>
<b>TERRITORY</b>	<b>78</b>
<b>THREATENED SPECIES</b>	<b>78</b>
<b>TRADE OFF</b>	<b>79</b>
<b>TRADITIONAL KNOWLEDGE</b>	<b>79</b>
<b>TRADITIONAL MEDICINE</b>	<b>80</b>
Transboundary protected area = <b>transfrontier conservation area</b>	80
<b>TRANSFRONTIER CONSERVATION AREA</b>	<b>80</b>
<b>TRANSLOCATION</b>	<b>80</b>
<b>TRANSPARENCY</b>	<b>81</b>
<b>TRANSPORT</b>	<b>81</b>
<b>TROPHY</b>	<b>82</b>
<b>TROPHY HUNTING</b>	<b>82</b>
Trophy hunting -> <b>sport hunting</b>	70
<b>UNGULATES</b>	<b>82</b>
<b>UPLAND GAME</b>	<b>82</b>
<b>VACCINATION</b>	<b>83</b>
<b>VECTOR</b>	<b>83</b>
<b>VETERINARY AUTHORITY</b>	<b>83</b>
<b>VIABLE POPULATION</b>	<b>84</b>
<b>VULNERABLE</b>	<b>84</b>
<b>WATERFOWL</b>	<b>84</b>
<b>WILD ANIMAL</b>	<b>84</b>
<b>WILDLIFE</b>	<b>85</b>
<b>WILDLIFE CONSERVATION</b>	<b>85</b>
<b>WILDLIFE MANAGEMENT</b>	<b>85</b>
<b>WILDLIFE MANAGER</b>	<b>86</b>
<b>WILDLIFE TRADE</b>	<b>86</b>



<b>WILD MEAT</b>	<b>87</b>
wild meat hunting = <b>bushmeat hunting</b>	8
<i>wildlife stakeholder acceptance</i>	
<i>tolerance</i> -> <b>carrying capacity</b>	9
<b>WISE USE</b>	<b>87</b>
<b>ZOONOSIS</b>	<b>87</b>

## References

American Heritage® Dictionary of the English Language, 2011 by Houghton Mifflin Harcourt Publishing Company

American Trails, 2014. *Glossary Wildlife Habitat*. [Online].  
<http://www.americantrails.org/wild/glossary-wildlife-habitat.html>

Arlinghaus, R. & Cooke, St. 2009. *Recreational Fisheries: Socioeconomic Importance, Conservation Issues and Management Challenges*. In: *Recreational Hunting, Conservation and Rural Livelihoods: Science and Practice*, 1<sup>st</sup> ed. Edited by B. Dickson, J. Hutton and W.M. Adams. 2009 Blackwell Publishing

Boere, G.C. & Stroud D.A. 2006. *The Flyway concept: what it is and what it isn't*. pp. 40-47 in Boere, G.C., Galbraith, C.A. & Stroud, D.A. (eds). *Waterbirds around the world*. Edinburgh, The Stationary Office.

Boone and Crockett, 2015. [https://www.boone-crockett.org/huntingEthics/ethics\\_fairchase.asp?area=huntingEthics](https://www.boone-crockett.org/huntingEthics/ethics_fairchase.asp?area=huntingEthics) (accessed 15 July 2015)

Cambridge, 2015. *Cambridge Advanced Learners Dictionary & Thesaurus* <http://dictionary.cambridge.org/de/worterbuch/britisch/big-game> (accessed 15 July 2015)

CBD, 2011. *Convention on Biological Diversity: ABS. Introduction to access and benefit-sharing*. <https://www.cbd.int/abs/infokit/revise/web/all-files-en.pdf> (accessed December 2015).

CITES, 1973. *Convention on International Trade in Endangered Species of Wild Fauna and Flora*, Washington, USA

CITES Glossary: <https://cites.org/eng/resources/terms/glossary.php> (accessed 15 July 2015)

CMS, *Convention on the Conservation of Migratory Species of Wild Animals (CMS) Article 1*. <http://www.cms.int/en/node/3916>

Convention on Biological Diversity, 1992.  
<https://www.cbd.int/convention/articles/default.shtml?a=cbd-02>

COP7 Decision VII/16F, Article 8(j) and related provisions.  
<https://www.cbd.int/decision/cop/default.shtml?id=7753>

CPW, 2015 *Bushmeat Sourcebook* <http://www.fao.org/forestry/wildlife-partnership/bushmeat-sourcebook/en/>

Dudley N, 2008 *Guidelines for applying protected area management categories*. IUCN, Gland, Switzerland

Dunster, J. & K. 1996. *Dictionary of Natural Resource Management*. CAB International

Ecolife Dictionary, <http://www.ecolife.com/define/free-range.html> (accessed December 2015)

Envirothon, 2013: <https://www.envirothon.org/wildlife-glossary> (accessed April 2017)

European Charter, 2007 *European Charter on Hunting and Biodiversity*. T-PVS(2007)7revised. Council of Europe  
<https://wcd.coe.int/com.instranet.InstraServlet?command=com.instranet.CmdBlobGet&InstranetImage=1883368&SecMode=1&DocId=1436274&Usaqe=2> (accessed 15 July 2015)

FAO, 1997 *Yaa Ntiamao-Baidu "Wildlife and food security in Africa"*, FAO Conservation Guide, vol. 33, 1997

FAO Forestry Department. *Commercial hunting*:  
<http://www.fao.org/docrep/t0750e/t0750e07.htm> (accessed 15 July 2015)]

FAO, IFAD and WFP. 2014. *The State of Food Insecurity in the World 2014. Strengthening the enabling environment for food security and nutrition*. FAO, Rome, Italy

Hesselink, F.J. e.a., *Communication, Education and Public Awareness (CEPA), a toolkit for the Convention on Biological Diversity*, Montreal 2007

Heywood, V. H. (Ed.), 1996. *Global Biodiversity Assessment*. UNEP

Hodges J (ed), 1986 *Animal Genetic Resources Information*. UNEP & FAO, Rome, Italy

IHEA, 2014. *International Hunter Education Association. Glossary of Wildlife Terms*. [http://homestudy.ihea.com/glossary\\_wl.htm](http://homestudy.ihea.com/glossary_wl.htm) (accessed December 2015)

Ilaby M (ed), 2010 *A Dictionary of Ecology*. Oxford University Press, Oxford, UK

IPPP, 2006 *International Plant Protection Convention. International Standard for Phytosanitary Measure #5 (Glossary of Phytosanitary Terms)*, 2006

IUFRO, 2005 *Multilingual Pocket Glossary of Forest Terms and Definitions*

IUCN, 2000 *Guidelines for the Prevention of Biodiversity Loss Caused by Alien Invasive Species (2000)*. Approved by the IUCN Council, Feb 2000

IUCN,  
[https://cmsdata.iucn.org/downloads/en\\_iucn\\_glossary\\_definitions.pdf](https://cmsdata.iucn.org/downloads/en_iucn_glossary_definitions.pdf)  
(accessed 15 July 2015)

IUCN/SSC, 2013. *Guidelines for Reintroductions and Other Conservation Translocations*. Version 1.0. Gland, Switzerland: IUCN Species Survival Commission, viii + 57 pp.

IUCN, 2012 *IUCN Red List Categories and Criteria: Version 3.1*. Gland, Switzerland

Mayr E, 1942. *Systematics and the Origin of Species, from the Viewpoint of a Zoologist*. Harvard University Press, Harvard, USA

Nasi, R. et al, 2008 *Nasi, R.; Brown, D.; Wilkie, D.; Bennett, E.; Tutin, C.; Van Tol, G.; Christophersen, T. (2008). Conservation and use of wildlife-based resources: the bushmeat crisis*. CBD Technical Series no. 33. (Retrieved July 2, 2015)

North American Envirothon, 2013. *Wildlife Glossary* (online)  
<http://www.envirothon.org/curriculum-guidelines/248-wildlife-glossary.html> (accessed December 2015)

OECD, 2007 *The OECD Glossary of Statistical Terms*

OIE, 2014 *OIE-Terrestrial Animal Health Code V8-15/07/2014*

O'Neill, 2012. *Primates: The taxonomy and general characteristics of Prosimians, Monkeys, Apes and Humans*. *Glossary of Terms*.  
<http://anthro.palomar.edu/primate/default.htm> (accessed December 2015)

Riley et al., 2002. *The essence of wildlife management*. *Wildlife Society Bulletin*, Vol. 30, No. 2 (Summer, 2002), pp. 585-593

Ruiz-Mallén et al., 2015. *Ruiz-Mallén, I., C. Schunko, E. Corbera, M. Rös, and V. Reyes-García. 2015. Meanings, drivers, and motivations for*

communitybased conservation in Latin America. *Ecology and Society* 20(3):33. <http://dx.doi.org/10.5751/ES-07733-200333> (accessed December 2015)

Saunders, 2007. *Saunders Comprehensive Veterinary Dictionary*, 3 ed. © 2007 Elsevier, Inc.

Secretariat of the Convention on Biological Diversity (2011) *Livelihood alternatives for the unsustainable use of bushmeat*. Report prepared for the CBD Bushmeat Liaison Group. Technical Series No. 60, Montreal, SCBD. <https://www.cbd.int/doc/publications/cbd-ts-60-en.pdf>

*The IUCN Red List of Threatened Species. Version 2014.2.* (accessed 15 July 2015)

Townsend et al., 2011. A Townsend Peterson, Jorge Soberón, RG Pearson, Roger P Anderson, Enrique Martínez-Meyer, Miguel Nakamura, Miguel Bastos Araújo (2011). "Species-environment relationships". [Ecological Niches and Geographic Distributions \(MPB-49\)](#). Princeton University Press. p. 82. See also Chapter 2: Concepts of niches, pp. 7 ff.

UNEP, 1992 *The Convention of Biological Diversity. Art. 2. Definitions.* UNEP 1992

UNEP, 2007 *United Nations Environment Programme (UNEP), "Global Environment Outlook - GE04 - Environment for Development"*, UNEP, 2007

UNESCO, 1972 *World Heritage Convention (1972) Convention concerning the protection of the world cultural and natural heritage.* United Nations Educational, Scientific and Cultural Organisation, Paris, France.

USDA, 2013. *USDA Wildlife Services National Wildlife Research Center (NWRC). (2013, July) Wildlife Damage Management.* [Online]. <http://lib.colostate.edu/research/agnic/glossary.html> (accessed July 2015)

Vermont Fish & Wildlife Department, 2005. *Vermont's Wildlife Action Plan, Chapter 6, Glossary & Acronym Key.* Montpelier, USA: Vermont Fish & Wildlife Department, 2005.

WAZA, 2005 *World Associations of Zoos and Aquariums (WAZA), "Building a Future for Wildlife"*, WAZA, Bern, Switzerland, 2005

*West's Encyclopedia of American Law, edition 2.* Copyright 2008 The Gale Group, Inc.

White, J.M. *Glossary of important terms in wildlife ecology*. Monticello, USA: University of Arkansas, ND

WWF, 2015.

[http://wwf.panda.org/what\\_we\\_do/where\\_we\\_work/project/projects\\_in\\_de\\_pth/cbnrm/](http://wwf.panda.org/what_we_do/where_we_work/project/projects_in_de_pth/cbnrm/) (accessed December 2015)