



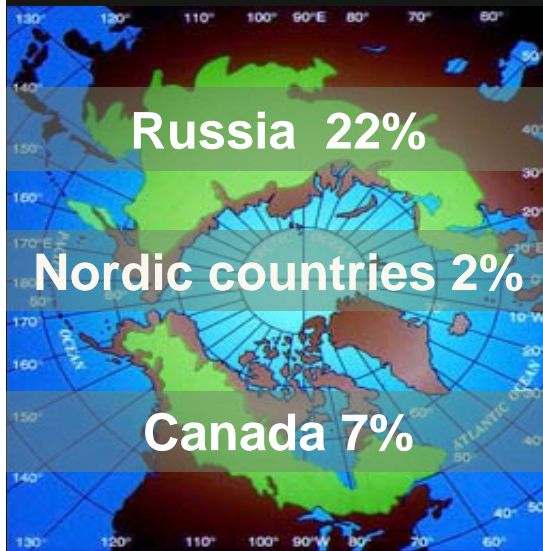
Swedish Research Council Formas

Forest Research Issues in the Nordic Countries



Lisa Sennerby Forsse, XXII IUFRO World Congress, 2005, President's discussion

The Boreal Forest Belt



Forests cover approx 49.8 million square kilometres - (33%) of the world's land surface area

- Boreal Forests, mil.sq.km.16.6
- Other Forests, mil.sq.km. 33.2

Boreal Ecosystems



- Subarctic, cold continental climate
- Long severe winters/short warm summers
- Mean annual precipitation, ca 15-20 inches
- Innumerable water bodies
- Podzol soils
- Relatively few species

Ownership of Forest Land



Nordic countries

- Private smallholders 50 %
- Industry 25 %
- Government 20 %



The Nordic Forestry Research Co-operation (SNS)

SNS main purposes:

- Finance collaborative research and net-working into the diverse functions of the forests in sustainable forestry
- Advise the Nordic Council of Ministers on questions concerning forests and forestry research

SNS encompasses forestry, forests and other wooded areas, the utilisation of wood and other forest products, as well as the non-commercial value of the forests

www.nordicforestresearch.org

Co-operation Finland-Sweden



Wood Material Science

- Two sub-programmes
 - basic research
 - innovation targeted research and development
- Budget € 20 million
- Main purpose to promote the competitiveness and sustainability of forestry and forest-based industries



Swedish Research Council Formas

European Co-operation

INTEGRATED PROJECT (IP)- EFORWOOD

- EU's biggest ever research project in the forest-based sector
- Will develop tools for sustainability impact assessment of the European forest-based sector
- Will run for four years and involve 35 organizations in 18 countries
- Total budget of €19 million (US\$24.5 million)



Swedish Research Council Formas

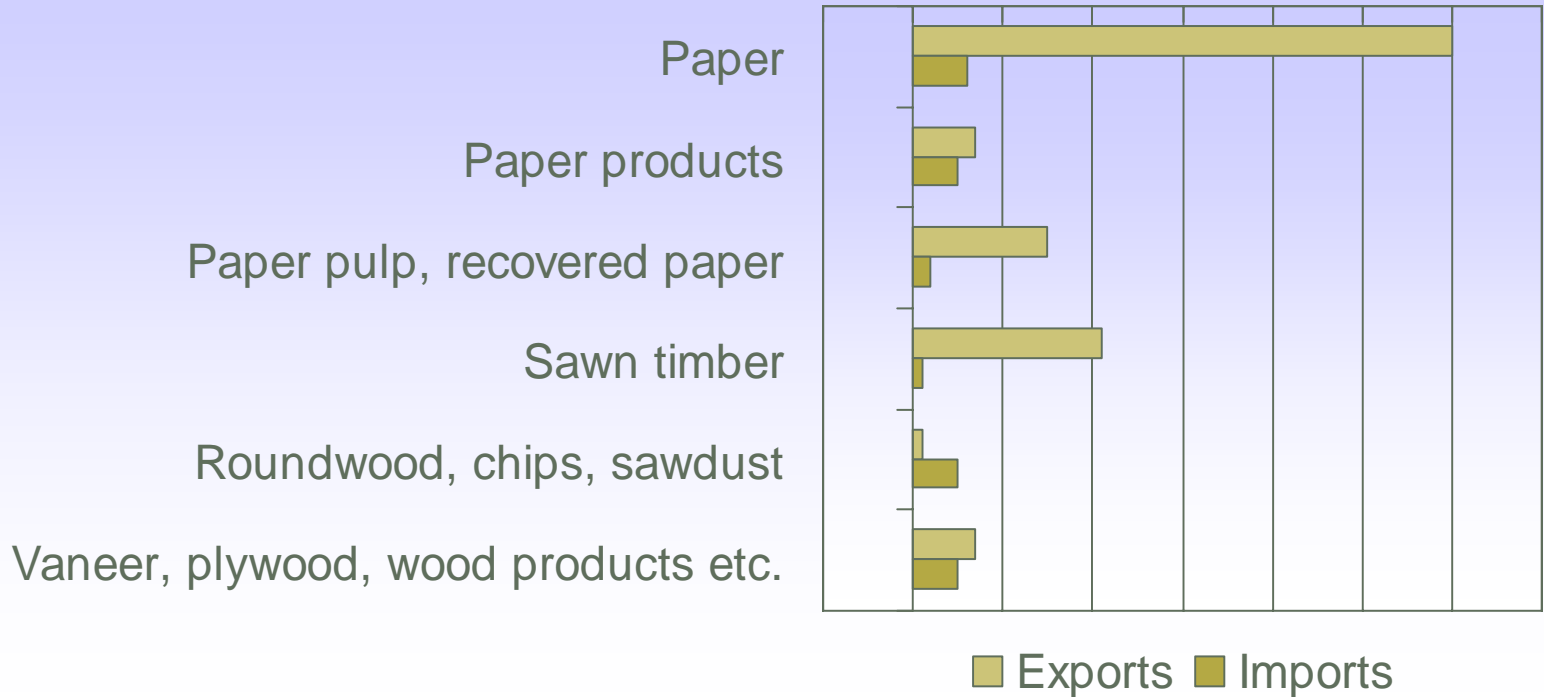
European Co-operation

- Technology Platform "Innovative and Sustainable Use of Forest Resources"
- Era-Net Project "Wood Wisdom", collaboration between national research councils in wood/forest related research areas

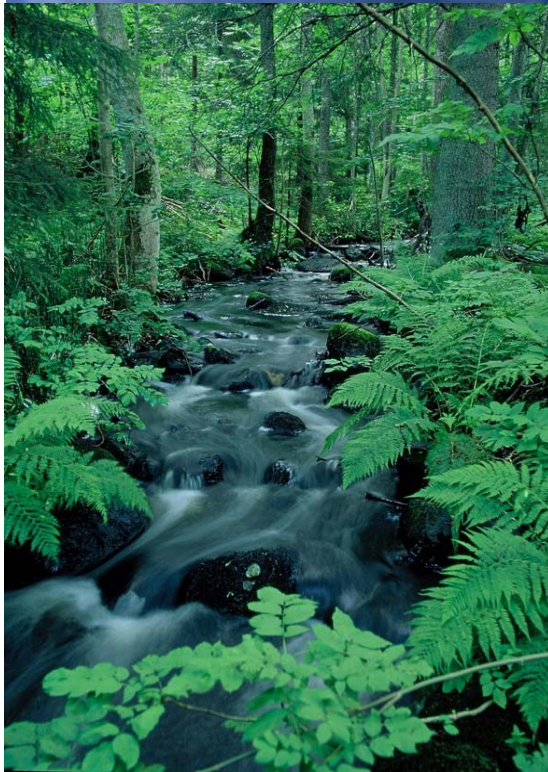
Forest Industry Products

Billion SEK

-10 0 10 20 30 40 50 60 70



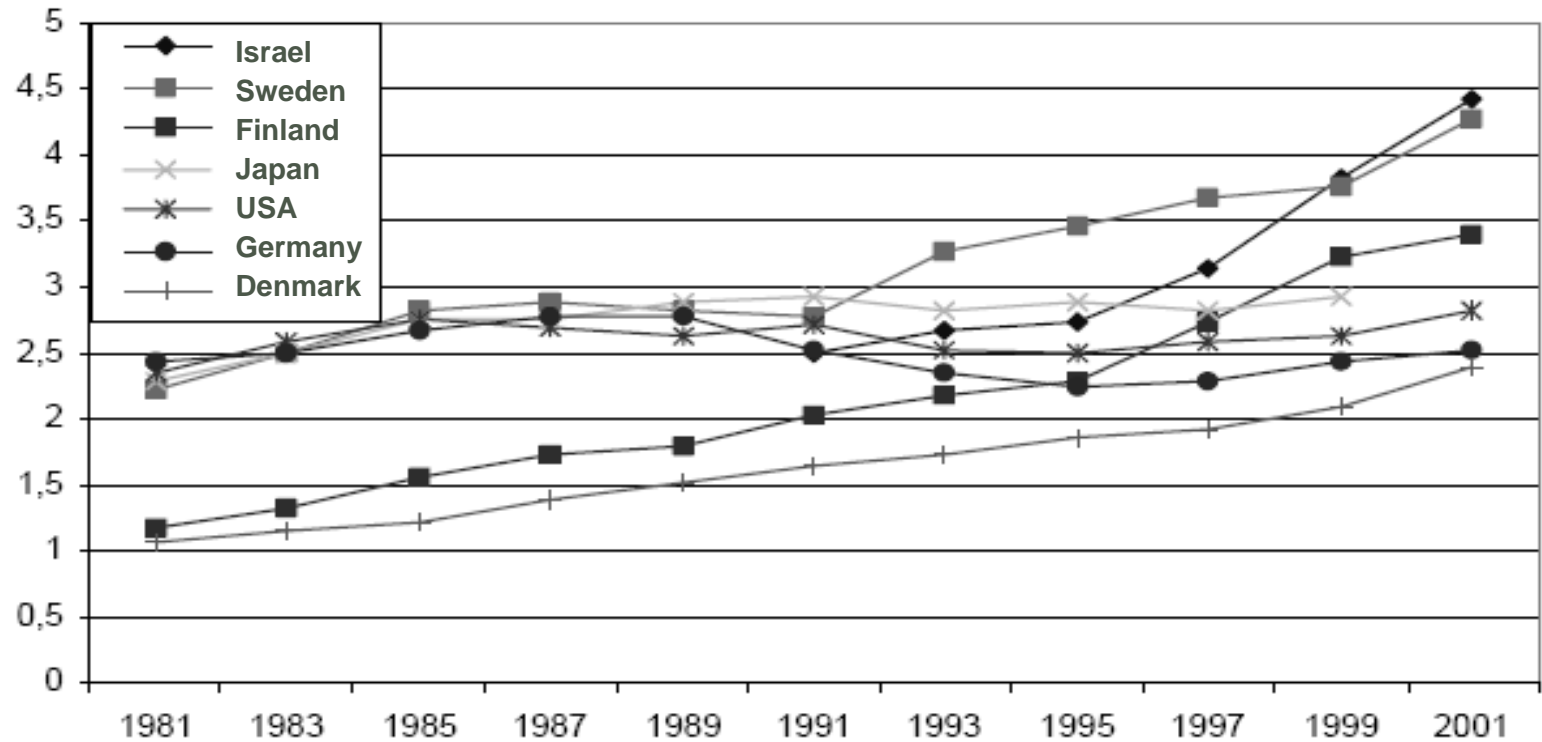
Key Challenges



- Climate change
- Increasing demand and competition for raw material
- Obtaining economical and environmental balance in forest utilisation (SFM)
- Attracting young talents to the sector

Research Funding

R&D budget, per cent of GNP, 1981-2001



Financing Forest Related Research



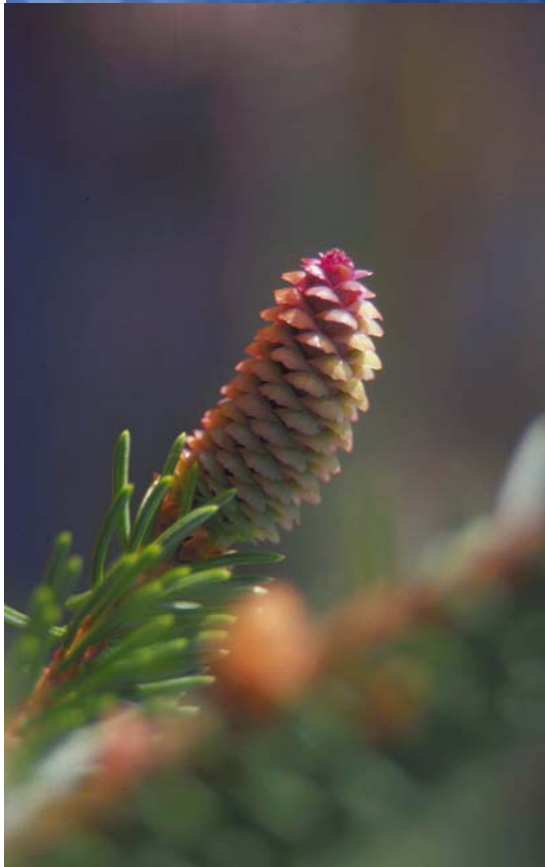
Approx € 250 million is spent on:

- Sustainable timber production
- Multiple use forestry
- Biodiversity and climate change
- Industrial research in pulp and paper
- Wood based products



Research Priorities

- Sustainable silvicultural methods
- Climate change related research
- Models and tools for strategic planning along the wood chain
- Multipurpose forestry
- Biotechnology to develop improved plant material
- Innovative new and improved products



Conclusions



- The boreal forest is a unique and important part of the global ecosystem
- The forest based sector in the Nordic countries plays a key role in a sustainable society
- Forest research is a corner stone for future competitive, knowledge based activities that fosters the extended use of renewable forest resources