

Portugal Bid
for the
XXIV IUFRO World Congress
Lisbon, 3 - 9 August 2014

Contents

Organisation.....	1
Chair of the Local Organising Committee	1
About the Instituto Superior de Agronomia	2
Portugal the Host Country	3
Introduction	3
Accessibility & Connections	4
Portugal, a country of forests.....	4
Organizational Plan for Congress Management	8
Environmental Support, Health & Safety	9
Lisboa the Host City.....	10
About Lisboa.....	10
Accessibility & Connections	13
Accommodation in Lisboa	14
Proposed Congress Venue	16
Lisboa Congress Centre	16
Layouts of Venue.....	17
Social Programme & Proposed Venues	18
Suggested Social Programme.....	18
Proposed Venues	18
Proposed Technical Visits	20
National Forest of Leiria (Portuguese Forest Authority)	20
Plant production at Viveiros do Furadouro, Óbidos	20
Companhia das Lezírias, a large agriculture and forestry company	20
ACHAR – Association of private landowners in Chamusca	20
APFCC – Association of private landowners in Coruche	20
ANSUB – Association of private landowners in Alcácer do Sal	21
Parque da Pena	21
Visit to RAIZ, Research Institute for Paper and Forest.....	21
PORTUCEL/SOPORCEL Pulp & Paper Company in Figueira da Foz.....	21
PORTUCEL/SOPORCEL Pulp and Paper company in Cacia	21
PORTUCEL/SOPORCEL Pulp and Paper company in Setúbal.....	22
ALTRI pulp and paper companies, Celbi – Figueira da Foz.....	22
ALTRI pulp and paper companies, Caima – Constância	22

Natural Park Reserve of Arrábida.....	22
Other suggestions to be considered:	22
Programme for Accompanying Persons	23
Suggested Cultural Visits & Tours	23
Other Tours & Visits Available.....	24
Pre & Post Congress Tours	26
Innovation.....	28
Features.....	28
Green Meetings - Good for the Earth & Good for Business.....	29
Financial Plan & Budget Overview	30
General Considerations	30
Anticipated Expenditure & Anticipated Revenue	30
Registration Types and Eligibility	32
Track Record of the Local Organiser.....	33
CPL EVENTS	33
Opinions on Destination & Testimonials.....	35
Support Letters of Intent	37

Organisation

Chair of the Local Organising Committee



Dear Prof. Don Lee

It is a great pleasure that, in the name of Instituto Superior de Agronomia, I present the Portugal bid to host the XXIV IUFRO World Congress, that will take place in 2014.

I am doubly proud that the bidding city is the beautiful city of Lisboa, which is considered the Dowager Duchess of Europe.

The general theme of this international event, focused on the value of territory and forestry, will offer experts of the sector from all over the world the opportunity to discuss the current issues of joint interest related to what is new in scientific research.

The Organising Committee will work tirelessly to make the forum one where countries from all five Continents can come together and feel at home, find excellent user-friendly work conditions, state-of-the-art technology, experience their first truly green and sustainable IUFRO congress and find moments of sharing and harmonisation.

As a nation proud of its natural beauty and clean air and one that is ahead of the game in environmentally friendly policies we will wholeheartedly endeavour to make this a memorable and fruitful experience.

I am confident that holding this edition of the Congress in Portugal, a country known for its hospitality, secure and safe environment, will contribute to consolidating the positive results that have been achieved in the past of this prestigious association I am proud to be an active member of and transmit, positive values for the future of the forestry sector, back to the participating countries.

I cannot think of a better place to host this Congress than a city which has always welcomed people from all over the world with open arms whatever their race, creed or philosophy.

To the IUFRO members, especially those who do not yet know Portugal, I am certain that after the Congress they will have discovered a thousand reasons for returning to visit us as soon as possible

I look forward to seeing you all in Lisbon in 2014,



Margarida Tomé



About the Instituto Superior de Agronomia



The Instituto Superior de Agronomia (ISA) is the largest and most qualified school of graduate and post-graduate degrees in the Agricultural Sciences, in Portugal, and its know-how is recognized nationally and internationally. With 155 years of experience, adjusting its teaching to technological change and to the reality of the country, focusing both on quality and modernisation. Integrated in the Technical University of Lisbon since 1930, it has about 1500 students in 3 cycles of instruction, a faculty of 147 teachers and 5 Researchers, including 137 PhDs. Located in the heart of Lisbon, Tapada da Ajuda -an Environmental and Botanical Park with about 100 ha, of recognized interest -it is also a pleasant place for events, recreational activities and the discovery of sites, such as the interesting Amphitheatre of Stone, the Belvedere, the Garden of the Parada, the Rugby field, the Astronomical Observatory, the Pavilion of Exhibitions, the Auditorium of Lagoa Branca, among others.

The Instituto Superior de Agronomia (ISA) has its roots in the remote 1852, with the creation of the Instituto Agrícola e Escola Regional de Lisboa, in the reign of Queen Maria II. After the establishment of the Republic in 1910, the entire education system was transformed and the Instituto Superior de Agronomia was created, establishing the titles of "Agricultural Engineer" and "Forestry Engineer". The Tapada da Ajuda, as well as the Ajuda Botanical Garden, were assigned at this time, to the Instituto Superior de Agronomia and seven years later, in the Tapada da Ajuda, the current Main Building of the Institute was inaugurated. Forestry was first differentiated, in relation to the course of Agronomy, which until then had only single subject of Forestry. It was only in 1930 that the Instituto Superior de Agronomia achieved university status, with the creation of the Technical University of Lisbon, where it was incorporated, along with the Schools of Engineering, Veterinary Medicine and Economics.

Portugal the Host Country

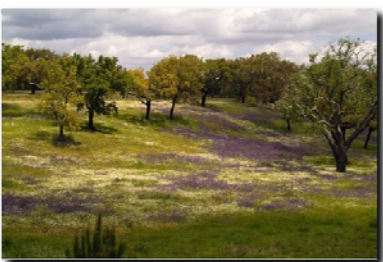
Introduction

Portugal is a European country located in the south east of the Iberian Peninsula. It is where the Atlantic Ocean meets Europe and the country's extensive coastline, its strong Mediterranean cultural influence and its landscape and proximity to Africa make it a country of contrasts where diversity is a dominant factor.



The valley of the River Tagus is usually taken as the line that divides the country into two main blocks: the mountainous north and the relatively flat south. However, despite its small size (89,000 km²), Portugal reveals a great diversity of habitats and landscapes which can only with difficulty be fitted into regional divisions. Climate, relief, soil, and the hydrology all act together to differentiate neighbouring, and seemingly homogeneous, regions.

Portugal has a wide coastal strip, which has obviously influenced the physical and human character of the country. The coastline, which is mostly straight, is 943 km long, of which three quarters runs in a mainly north-south direction, the remainder, the Algarve coast, running from east to west. The only large-scale indentations are the Aveiro lagoon, the estuaries of the Tagus and the Sado rivers, and the Formosa lagoon. The main rivers discharge into shallow estuaries of varying surface areas, with only the river Douro maintaining steep banks right to its mouth.



Portugal's territory is a veritable meteorological mosaic, and it is often difficult to draw boundaries between the different types of climate. Differences in relief between the north and the south, together with the fact that parts of the coastal relief run parallel to the coastal strip, weaken the influences of the Atlantic and the Mediterranean and go some way to explaining climatic variations within relatively small areas.

Portugal is rich in history, from Neolithic to Phoenician, Celtic, Roman and Moors. Evidence of its early beginnings can be seen in a number of regions.

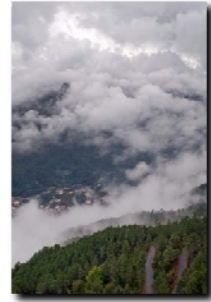
As you drive along you will notice unusual mounds and arrangements of huge limestones which are Neolithic burial chambers and fertility symbols. This tells you that man was living here more than 3000 years before Christ.



The Moorish heritage is strongly visible in fortifications and unfussy buildings as well as numerous architectural features, from the distinctive Algarve filigree chimneys to the glorious hand-painted glazed tiles which decorate countless churches, palaces and homes.

Portugal has been an independent country since mid-seventeenth century (1143) and its borders have been established since the eighth century making it the oldest established country in Europe.

From the middle of the XIV century and for over two centuries, thanks to the development of new open sea navigational techniques and the existence of vast areas of pine forest, planted at the beginning of the century on the maritime coast with a view to restraining the advances of sand towards the interior of the territory, it was possible for the Portuguese to begin the maritime exploration of the world hitherto unknown. First they advanced towards the West (discovering the Azores and Madeira Islands), then towards the East leading to the discovery of Brazil and the maritime route to India and eventually arriving in Japan and Australia.



In 1910 Portugal became a republic and later joined the EEC in 1980 as a full member.

Accessibility & Connections

Flight connections

Portugal has three international airports. One in Northern Portugal, one in Lisbon and one in Southern Portugal. Each of these airports has a vast array of flight connections from all over the world which are easily available as well as many low cost airlines.

Railway

There are rail links to the major cities from north to southern Portugal as well as with Spain.

Motorway

The road network allows for an easy access to the many different regions of Portugal, as well as with the major European capitals.

Portugal, a country of forests

The present characteristics of the Portuguese forests are the consequence of several policy options taken mainly during the XX century and that lead to a large increase of forest area, from 600,000 ha in 1874 to more than 3,000,000 ha in 2006 (figure 1).

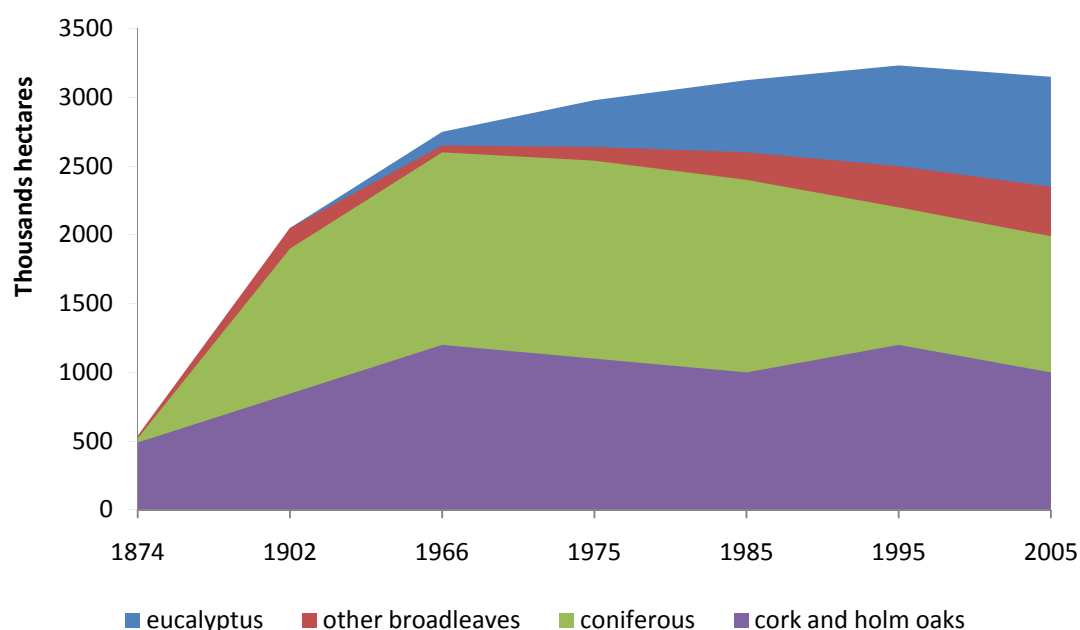


Figure 2 Evolution of Portuguese forest area (1874-2005)

As in many other European countries, natural forests were cleared as agriculture developed and the remaining forests were over-utilised in order to cover the wood demands of an increasing population. Therefore, the first important afforestation efforts occurred since the second half of the nineteenth century, aimed the rehabilitation of forest cover. The main concern was the protection of agricultural land on coastal areas and led to a process aiming at the stabilisation of sand dunes in the most critical areas. Maritime pine (*Pinus pinaster*) was the main species used and is responsible for the first large increment of forest area in the country. Almost in parallel, the culture of cork oak (*Quercus suber*) began in the south of the country, being these stands also responsible for part of the increase.

The next effort of afforestation was focused on mountainous areas, owned mainly by local communities, extremely degraded as a consequence of centuries of deforestation, over grazing and fire. Two main reasons were anticipated from this program, implemented between 1939-68: 1) to increase the economic profit of the local populations and; 2) soil protection and rehabilitation using pioneer species. Maritime pine was again the most used species. When soil conditions were more favourable, other species were utilised, like oaks, chestnuts and different coniferous. Cork oak increment continued in the south of the country, jointly with holm oak (*Quercus ilex rotundifolia*).

The next priority of the national forest policy was to support afforestation on private areas, which are the majority of the country, by establishing a Fund for Private Forest Promotion in 1945 that was in place until 1986. A large area was planted during this period, with a large variety of species and objectives.

The Portuguese Forest Project, financed by the World Bank in the 80's gave a good contribute to the funding of such plantations. By the 3rd part of the twentieth century occurred the big expansion of *Eucalyptus globulus* plantations, in parallel with the pulp industry's capacity. Although the species has been introduced in the country in 1830, mainly for ornamental

purposes, and the first large plantations date from 1880, it was only on the last 20-30 years that the big expansion occurred.

From 1986, new financing systems in support of afforestation measures were established with the support of the European Community. These programs gave special emphasis to the multiple functions of the new plantations. The most recent trends, reflecting new policy objectives and international commitments, but also market opportunities, show that traditional oaks, namely cork oak, are the main species chosen for afforestation of former agricultural lands. Diversification of species and of landscape is being promoted, in many cases to counter-act the problem of forest fires by using broadleaf species as fire breaks. Slow growing and indigenous species are being given higher rates of subsidies and afforestation in protected areas has special legislation. Figures 2 and 3 show the present land use and distribution of forest area by species.

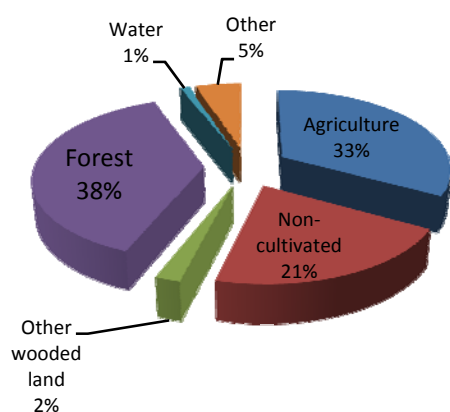


Figure 3 Distribution of forest area by species

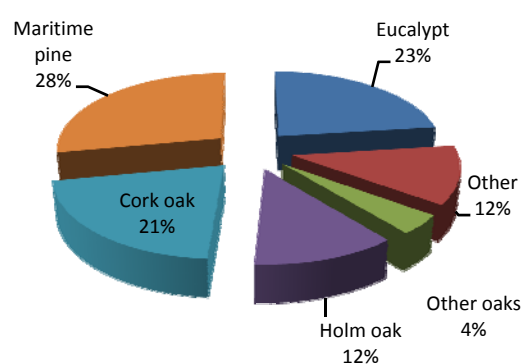


Figure 4 Present land use in Portugal

The recently published National Strategy for the Portuguese Forest Sector (NSPFS) identified different forest types associated with the principal use of the forest (Figure 4): i) wood production; ii) multifunctional forests; iii) conservation forests. The importance of each one of these forest types is shown on Figure 4. The wood production forest type is located on the more productive areas with strong Atlantic influence. The main species are *Eucalyptus globulus*, *Pinus pinaster* and other softwoods with high potential productivity if managed according to intensive silviculture. The multifunctional forest type locates in the regions with strong Mediterranean influence where *Quercus suber* and *Q. ilex* as well as *Ceratonia siliqua* and *Arbutus unedo* are the most important species. This forest type is characterized by agro-forestry and silvo-agropastoral systems. The conservation forests, mainly evergreen oaks and other hardwoods join different types of forests that guarantee protection of the hydrological regime, fisheries and biodiversity. They are located all over the country in classified areas. Coastal forests, protecting the coastal zones, are also part of this forest type.

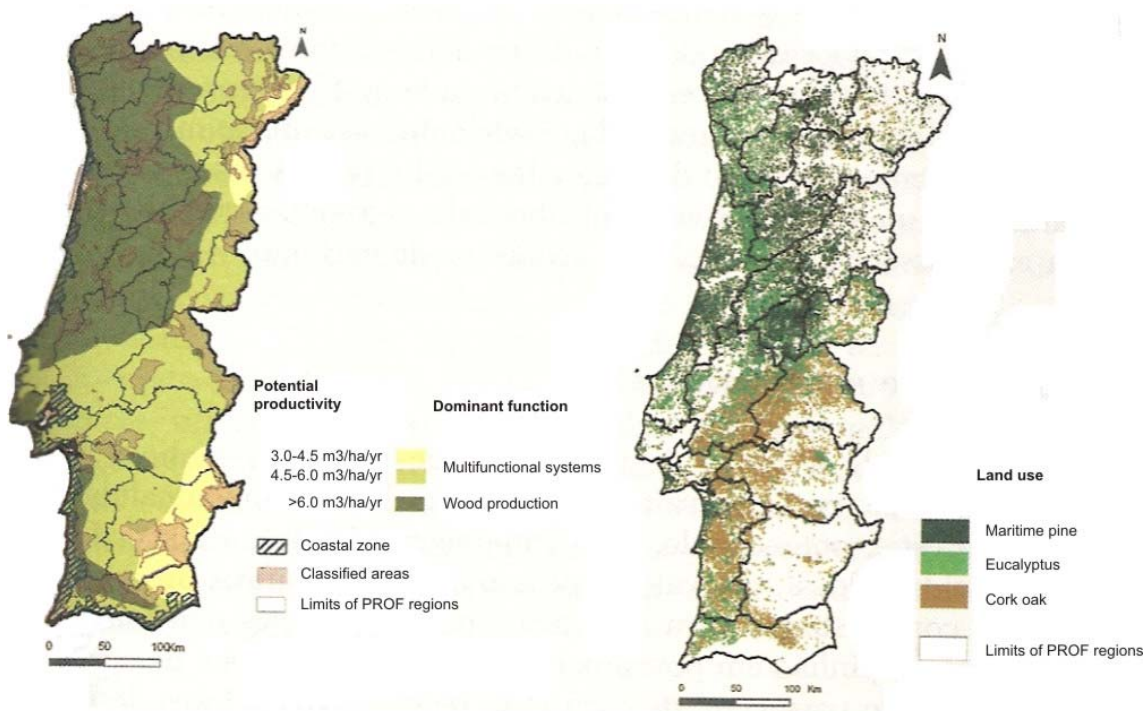


Figure 5. Specialization of the forest according to their principal use

The NSPFS has also identified the main threats of the Portuguese forest: forest fires and biotic hazards.

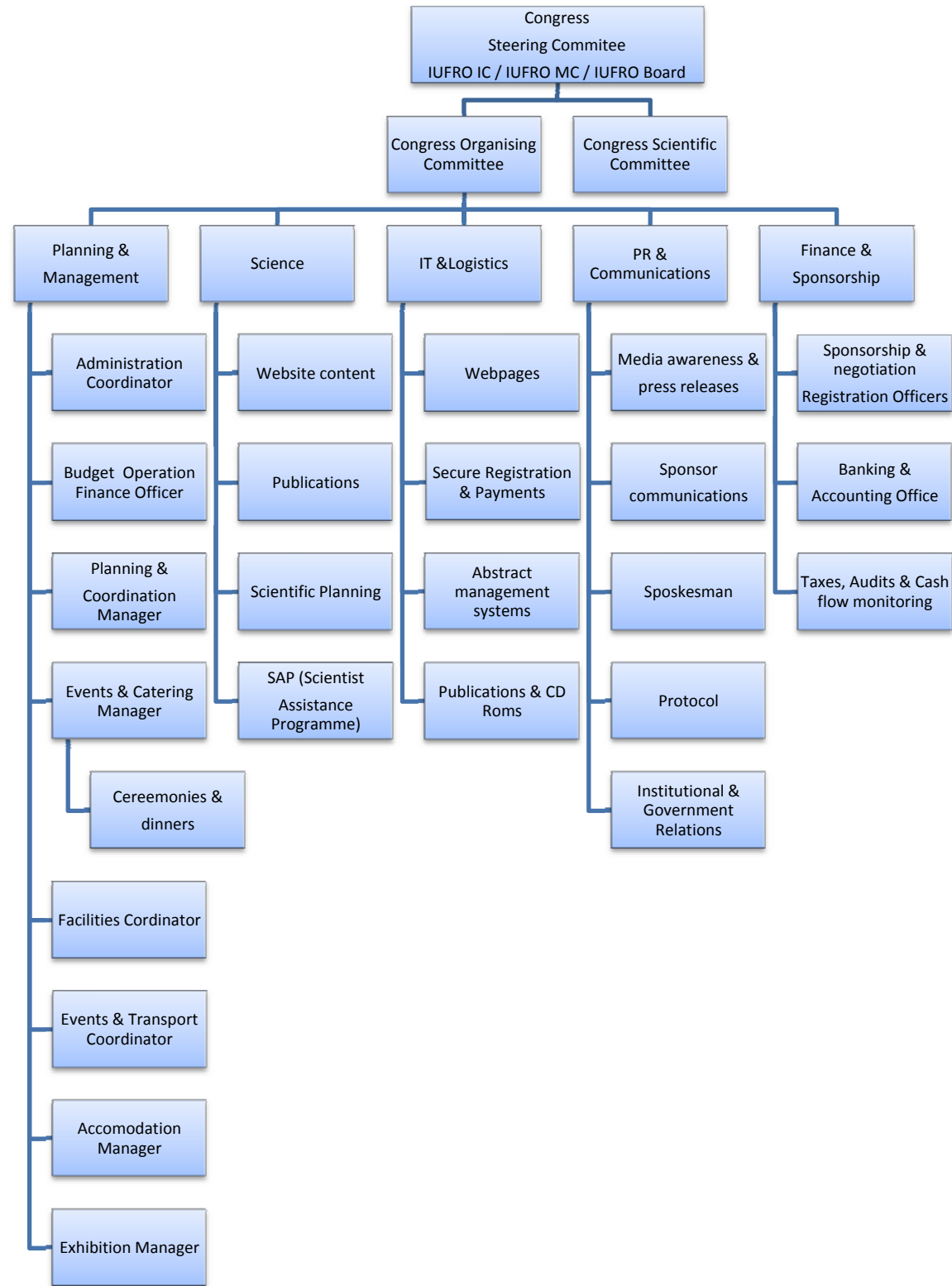
Forestry is one of the Portuguese sectors with an increasing importance in the Portuguese economy. As happens in other Mediterranean countries, Portuguese forests area are characterized, namely in the south, for a large production of non-wood products and others services. In comparison with other Mediterranean countries Portugal has been shown to have a higher contribution of these types of services. On the other hand, forest has been the basis for a sector of the economy with 130000 direct jobs which means 2% of the active population. The forest sector represents 10% of total exports and 3% of gross added value. According to the NSPFS the sector includes 3 main chains:

- ✓ The sawn wood chain that has undergone the disappearance of several small industrial units through a concentration phenomenon. Statistics point out that the number of units in this sub-sector may have decreased from 732, in 1998, to a number around 290, in 2005, with a similar production
- ✓ The pulp and paper chain contributes with a number close to 4000 direct jobs and its main evolution has been on an increasing vertical integration of the chain, with more production of paper and board, which leads to a higher added value with a tendency to a higher increase in the near future
- ✓ The cork chain represents an important fraction of the national external commerce, with 33% of the total exports; the number of units in this chain was of 828 in 2003, with a number of jobs over 12000.

Together with a high productivity and vertical integration the Portuguese forest sector is characterized by a high economic diversity. Other than the wood products, dominated by two species – eucalyptus and maritime pine – and the cork products, the forest sector presents other important products usually at a local scale. That's the case of the production of nuts and

other forest fruits, showing an increasing production in the last two decades, or the hunting and fisheries activities that give higher value to the sector.

Organizational Plan for Congress Management



Environmental Support, Health & Safety

Portugal has state-of-art health services both public and private which cover the whole of the national territory with modern hospitals and world-widely recognised health professionals.

Portugal also boasts one of the lowest crime rates in Europe.

Lisboa the Host City

About Lisboa

No one can visit Lisboa without falling in love with the Tagus!



Although the source of the river is in Spain, much of its great beauty is really to be seen as it meanders through Portugal on its way to the Atlantic Ocean. As it approaches Lisboa, its valley widens to form an area of fertile green meadowland - known in Portuguese as Lezíria. It is here that the famous fighting bulls are bred, together with the thoroughbred Lusitanian horses, such speedy steeds that their mothers were once said to be impregnated by the wind. The whole of this valley is full of deep-rooted cultural traditions, with its folk music and dancing and the brightly-coloured costumes of its campinos, who herd their cattle on horseback.

You will be able to appreciate more than 20 centuries of history and a vast heritage that Lisboa has shared with its inhabitants since 1147, the date when King Afonso Henriques, the first king of Portugal, captured the city from the Moors.

Sprawling along the right bank of the enormous Tagus estuary, Lisboa stands looking proudly towards the Atlantic Ocean and was the muse that inspired the great maritime discoveries. The memories of this golden age are etched in stone, in the Torre de Belém and the Mosteiro dos Jerónimos, both of which have been classified as world heritage sites. To the east, the city prefers to show visitors its bright new face, so clearly expressed in the exemplary modern architecture of the site that housed EXPO'98, the last world exposition of the twentieth century.



At night, the city's old quarters come alive with the sound of fado singing and guitar-playing, the musical expression of the soul of Lisboa's inhabitants. And yet, down the hill at the open-air cafés, bars and discothèques, whose lights are reflected in the calm waters of the River Tagus, the night is still young. Why not also take advantage of Lisboa's special location and enjoy the white sand of the long ocean beaches, just a stone's throw from the Portuguese capital? Also to be found close by are a series of excellent golf courses, a casino, and the romantic town of Sintra, a paradise that has been magnificently set in the most beautiful landscape and has rightly been classified as world heritage.

Like the Portuguese people, Lisboa is an unpretentious city with a quiet charm that cannot fail to hold you in its embrace. There is a Portuguese saying: "Porto works and Braga prays,



Coimbra studies and Lisboa plays". Lisboa is proud to call itself the national playground as well as the national capital. Served by its international airport just a 15-minute drive from the city centre, it boasts an array of de luxe hotels with excellent conference facilities, as well as beautiful historic palaces and monuments ideal as banqueting venues. There is wonderful sightseeing, while the city's gastronomy and wines are unforgettable. The nightlife rivals the capitals of Europe and many fine new eating houses and other nightspots, many with terraces overlooking the river, are now concentrated on refurbished areas along the River Tagus stretching intermittently from the World Expo 98 site and the Vasco da Gama bridge to the dock area of Cais do Sodré and Santo Amaro as far as Bélem.

Lisboa is situated on the most regal part of the Tagus and is built on the legendary seven hills (actually 24) that provide many vantage points over rooftops, inviting parks and gardens, and the great sweep of the harbour and a waterfront which stretches 30kms.

The steep gradients over which much of the central part of the city is scattered are best explored on foot while another pleasant way to discover the sights is by riding the gaily-painted electric trams.

The "Lisboetas" are generally laid back and friendly people and Lisboa is a city where the visitor generally feels at ease.

The most famous part of town is the hilly Alfama district, a labyrinth of cobbled alleys, tiny squares, and elegant houses, rising in tiers from the Tagus, which has changed little since the Moorish occupation. Old stone houses lean and tilt almost haphazardly, the streets zig-zag and daily life passes before your eyes – quaint, boisterous and always fascinating. At night the husky voices of black-shawled singers are heard in the fado nightclubs.



The contrast with the nearby low-lying Baixa district, destroyed in the earthquake of 1755, is dramatic. This area, containing the Praça do Commercio and the Rossio, was rebuilt in precise grid form by the Marquis of Pombal with splendid squares and avenues.

The Bairro Alto district is a big attraction for visitors. This is the most bohemian quarter of the city, rising to the west in steep streets and stone staircases and lined with restaurants, fado houses and mildly raffish yet inviting bars.

The lower part of this district, served by several lifts to the upper reaches, embraces the elegant Chiado with its fashionable department stores and coffee houses, now beautifully restored after a serious fire in 1988.



Another area of Lisboa not to be missed is Belém, home to some of Lisboa's finest Manueline architecture, evoking Portugal's great era of maritime discoveries. This area is



notable also for excellent restaurants overlooking parklands and gardens. The speciality of the famous Pasteis de Belém antique coffee house nearby are delicious custard tarts sprinkled with cinnamon (pasteis de nata).

To the west, the riverfront evolves into a series of Atlantic Ocean beaches, forming the Lisboa coastline. This region has gracious resorts with historic palaces and hotels that are ideal venues for organizing holiday breaks and conferences and within comfortable travelling distance are more than 20 championship standard golf courses.

Geographical Situation

Lisboa is the capital of Portugal and lies on the north bank of the Tagus Estuary, on the European Atlantic coast. It is the westernmost city in continental Europe. Greater Lisboa has an area of approximately 1,000 km². The city lies more or less in the centre of the country, approximately 300 km from the Algarve in the south and 400 km from the northern border with Spain. Lisboa offers a wide variety of options to the visitor, including beaches, countryside, mountains and areas of historical interest only a few kilometres away from the city centre.

Language

Portuguese is Latin in origin and the third most widely spoken European language in the world. It is the mother tongue of about 200 million people. Portuguese is the official language in several countries: Angola, Cape Verde, Guinea-Bissau, Mozambique, São Tomé e Príncipe in Africa, and Brazil in South America. In Portugal itself a considerable number of people can understand and communicate in foreign languages.

Demographical Information

Approximately 600,000 people live in Lisboa. However, if one includes the various satellite towns, the population of Greater Lisboa rises to approximately 1.9 million people.

Religion

Portuguese culture is greatly influenced by religion. Although Catholicism predominates, other religions may be freely practiced.

Electricity

Voltage: 220/380 volts at a frequency of 50 Hertz. All sockets follow European standards. To use American-type plugs, a 220-volt transformer should be used together with an adapter plug.

Currency

The unit of currency in Portugal is the Euro €.

Telecommunications

In terms of telecommunications, Lisboa offers state-of-the-art technology and can supply a large number of phone lines and other communication equipment in the shortest possible time. Portugal Telecom, the Portuguese telecommunications group, operates with a wide range of technological networks for telephone services, data communications, international and satellite connections, mobile communications and cable TV, thus ensuring ease of contact with the rest of the world.

Schedules

Opening hours in Portugal are similar to those in the rest of Europe. The visitor has access to all normal services at any time of the day and on all days of the week - not only in Lisboa, but also in the rest of the country.

Accessibility & Connections

The city and site of the Congress are easily accessible. Flight connections from all over the world are easily available, as well many low cost airlines. Transportation to the site of the Congress is readily available and very inexpensive

Lisboa is easy to get to. It is a short flight away from most European cities, and is just as easily accessible by road, railway or sea.

By air

Lisboa International Airport, 7 km from the city centre, has daily flights to and from the major cities in Europe and the world.

TAP Portugal will be the Official Carrier for the Congress. They are offering discounts to the participants who make their flight booking and buy their ticket exclusively through TAP Portugal's website.

The Portuguese airlines TAP - Air Portugal and PGA - Portugália Airlines, as well as major international airlines, fly to and from Lisboa.

By rail

Scores of national and international trains arrive in Lisboa every day. In addition to Santa Apolónia terminal station, the city now has the new Gare do Oriente, which opened in 1998 adjacent to the Parque das Nações. Both stations have direct bus or underground connections to the city centre.

By sea

The Port of Lisboa is the busiest port on the European Atlantic coast. It has three terminals for cruise ships: the Alcântara, Rocha de Conde d'Óbidos and the Santa Apolónia terminals. Lisboa is often a port of call for many cruise ships (coming from many different places). Furthermore, the city also has marinas for pleasure boats in the docks of Belém, Santo Amaro, Bom Sucesso. Alcântara and, most recently, the Olivais Docks.

By road

Arriving in Lisboa by road is a pleasant experience, as the visitor can enjoy the beautiful countryside along the way. The city has good road accesses and the most frequently used routes are: the A1 motorway, the 25th April Bridge, the new Vasco da Gama Bridge, and the CREL, the outer ring-road for the Lisboa region.

Buses & Trams

Carris has the exclusive rights as the above ground mass public transport operator in Lisboa.

The network is made up of 88 routes,

- ✓ 61 urban
- ✓ 18 suburban
- ✓ 1 season
- ✓ 8 late night / early morning (from 11.45 p.m. to 5.30 a.m.)

Aerobus

Linking the Airport to downtown Lisboa and Cais do Sodré (every 20 minutes from 7 a.m. to 9 p.m.)

Underground

The Lisboa underground has four major routes and is open between 6:30 and 01:00 am.

- ✓ Linha Azul (blue line)
- ✓ Linha Amarela (yellow line)
- ✓ Linha Vermelha (red line)
- ✓ Linha Verde (green line)

Taxis

Available right outside the Arrival and Departure halls.

Taxi Voucher

Taxi Voucher Service at the Lisboa Airport - courtesy, friendliness, and safe driving. This service is available to passengers arriving at Lisboa Airport who wish to travel by taxi. The service operates with vouchers on sale at the Turismo de Lisboa counter, located in the terminal. The price of the voucher depends on the distance of the trip or length of time, as well as on the type of service required: normal or personalized (in the former, the driver is trained to speak foreign languages and acts as tourist guide).

Accommodation in Lisboa

Lisboa's accommodation mirrors the city's and region's general diversity. You simply have to choose the best option for your stay – ranging from major international hotel chains to “charm hotels” many located in former convents and palaces, that will transport you back in time, thus delivering a different experience of the region and city. ***In 2007 Lisboa was considered the best quality/cost destination in Europe.***

And since your stay is much more than an overnight, you'll also find a wide array of spas in Lisboa, where you can relax, focus on your well-being and enjoy genuine Zen moments. Step back from the city's lively entertainment offer and wallow in the relaxing, tranquil and revitalising experience offered in a complete spa.

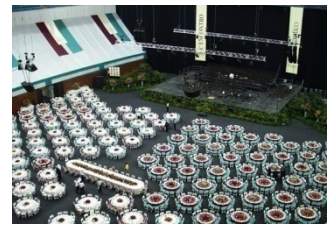
Range of Hotel Prices for the Congress Period

The number of hotel rooms available in Lisboa from 2 to 5 stars is 12,687.

The distances from the hotels to the conference venue quoted below are not in a direct line.

Star Rating	Distance to Conference Venue	Bus (Aprox.)	Taxi (Aprox.)	Price Range	Rate Includes
5	5 - 10 km	10 - 40 m	1 - 15 m	209.00 – 470.00 €	B&B
4	500 m - 11 km	5 - 40 m	0 - 20 m	145.00 – 400.00 €	B&B
3	3 Km - 9 km	7 - 30 m	7 - 15 m	140.00 – 210.00 €	B&B
2	4 - 10 Km	8 - 40 m	7 - 15 m	80.00 – 140.00 €	B&B

Proposed Congress Venue



Lisboa Congress Centre

Located near the Tagus river near the historic buildings of Belém quarter, Lisboa Congress Centre is an inviting space for anyone wishing to hold congresses, conferences, meetings, exhibitions and other events. This venue is a member of the most important worldwide associations and is considered one of the top 10 congress venues in Europe. State-of-the-art equipment and facilities as well as highly experienced professionals make this a favourite venue for any type of event. The venue has housed European Union congresses, OSCE congresses, UN events, and 8000-delegate medical congresses as well as the 5000 strong media team covering the European Football Championships in 2004



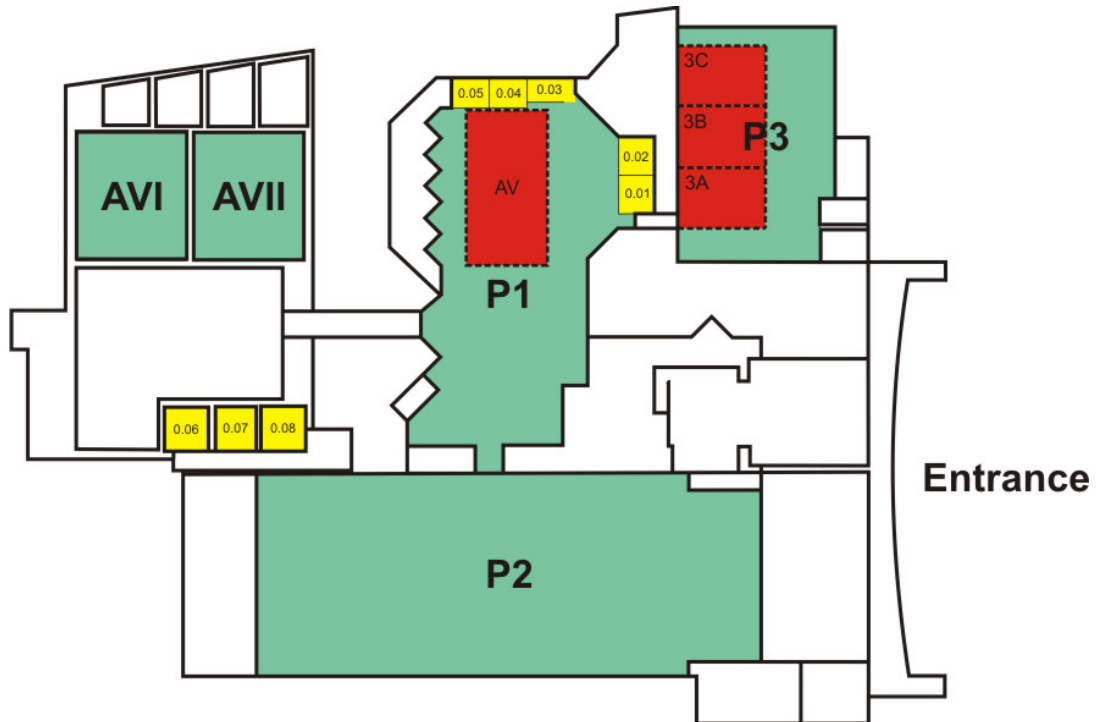
Three large entrance halls allow the holding of several and different kind of events simultaneously with maximum comfort and efficiency. The venue is served with up-to-date Audiovisual and IT Equipment and also Wi-Fi System.

- ✓ Area for exhibits and poster sessions (50-200 commercial booths)

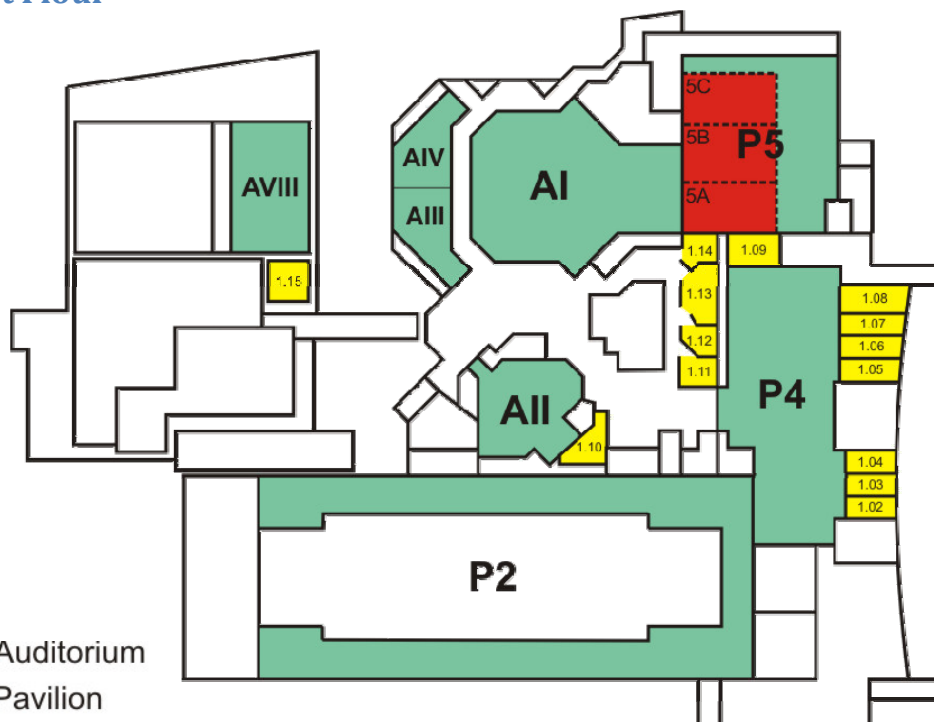
- ✓ All lectures will take place in sizable, well equipped, pleasant and audible rooms. Special attention to be given to the plenary lectures.

Layouts of Venue

Ground Floor



First Floor



- A - Auditorium
- P - Pavilion
- - Removable
- x.yy - x : Floor yy : Room Number

Social Programme & Proposed Venues

Suggested Social Programme

Ceremonial Tree Planting

The organisers will organise a ceremonial tree planting with congress plaque in the Sintra Mountain Range which has seen its forestry area ravaged by constant fires over the last years and is a symbol of the Maritime & Discoveries Era and so has a symbolic reference.

Welcome Reception – In the Footsteps of the Great Navigators,

Portugal stretched its imagination and looked out towards the sea and saw more than just water. The Navigators brought new worlds to the world. During the Welcome Reception you will have a chance to savour the aromas, flavours and images of all the mysterious, exotic and faraway places touched by the Navigators on their journeys as you catch up with old friends or meet new ones.....Connecting & Networking is the key to Success...an opportunity to **Convene, Connect and Commit**.

Farwell Gala Dinner - Awaken Your Senses Evening

This Very Special Evening has been conceived to allow you to get to know Portugal and the Portuguese through your senses. A specially designed menu has been produced to connect you to all your emotions and senses. You will also be able to taste, see, smell, touch, hear, and feel all the aspects that make this country a feast for the senses....and then there are the surroundings! But that is a secret or we will spoil the surprise. Be wooed and wowed by this 900- year old country with traditions that have lasted the test of time.... Amidst the colours, sounds and emotions and the beautiful landscapes, you can expect the usual intensive networking.

Proposed Venues

Welcome Reception - Lisboa Congress Centre



Located near the Tagus River near the historic buildings of Belém quarter, Lisboa Congress Centre is an inviting space for anyone wishing to hold congresses, conferences, meetings, exhibitions and other events.

Three large entrance halls allow the holding of several and different kind of events simultaneously with maximum comfort and efficiency. The venue is served with up-to-date Audiovisual and IT Equipment and also Wi-Fi System.

Farwell Gala Dinner - Atlantic Pavilion in the Park of Nations



Pavilhão Atlântico is a unique facility. Located in the former site of the EXPO'98 – The last world exhibition of the 20th Century.

Its aesthetics, versatility, flexibility, and stunning architecture of simple yet highly innovative forms provide a perfect stage for highly successful events.

Pavilhão Atlântico is a member of EAA – European Arenas Association and of ATL – Associação de Turismo de Lisboa (Lisboa Touring Society), and this vast and highly symbolic facility is located inside Lisboa's Parque das Nações development. The location, on the northern shore of Lisboa's Tagus River, is rather privileged and provides great ease of access. It is also very close to Lisboa's International Airport (only 5 minutes away). Pavilhão Atlântico's stunning architectural design features excellent, advanced infrastructure and it is one the most modern event hosting facilities in the world today.

Pavilhão Atlântico is passionate about satisfying the needs of those who are looking for elegance, cost-effectiveness, know-how, versatility and flexibility.

Proposed Technical Visits

Visits will be **hosted** by the institutions/organisms involved with the congress supporting transport facilities.

Several interesting technical visits will be organised. Some examples are:

National Forest of Leiria (Portuguese Forest Authority)

The National Forest of Leiria, localized in the coastal dunes close to S. Pedro de Moel, is the largest National Forest in Portugal. It has been the first forest to have a management plan, dating from 1892, that established a program of silvicultural practices with the objective of maintaining it as a fully regulated forest producing high quality timber with long rotations (around 80 years). This management objective is still pursued. The forest has around 11000 ha, 8000 managed for wood production and the remainder, facing the sea, as protection forest.

Plant production at Viveiros do Furadouro, Óbidos

The Viveiros do Furadouro are a small enterprise that produces seedlings for eucalyptus plantations of ALTRI (one of the pulp and paper companies in Portugal) but also a large number of seedlings from other forest species that are sold to private landowners. There is associated research on plant production, namely on production of hybrids and reproduction in vitro.

Companhia das Lezírias, a large agriculture and forestry company

Companhia das Lezírias is the largest agriculture and forestry company in Portugal. Located very close to Lisbon it is an important support to the Metropolitan Area of Lisbon. The forests cover 8500 ha of the company land with the following species: cork oak (6100 ha), maritime pine (1400 ha), umbrella pine (300 ha) and eucalyptus (700 ha). The forest area of this farm is classified as “Model Forest” and is now used as demonstration of good forest practices. It supports the habitats of many species, namely birds, and part of the company is classified as Natura 2000.

ACHAR – Association of private landowners in Chamusca

In Portugal forest is mainly private which gave impetus to the existence of several Associations of Landowners. This technical visit will focus on one of these Associations that will explain the way they are organized, followed by field visits to the main forestry systems practiced in the region by private landowners: cork oak and eucalyptus.

APFCC – Association of private landowners in Coruche

In Portugal forest is mainly private which gave impetus to the existence of several Associations of Landowners. This technical visit will focus on one of these Associations that will explain the way they are organized, followed by field visits to the main forestry systems practiced in the

region by private landowners: cork oak and umbrella pine. This association has been pioneer in the design of forest inventories that are undertaken before cork extraction to support private landowners to establish cork price.

ANSUB – Association of private landowners in Alcácer do Sal

In Portugal forest is mainly private which gave impetus to the existence of several Associations of Landowners. This technical visit will focus on one of these Associations that will explain the way they are organized, followed by field visits to the main forestry systems practiced in the region by private landowners: cork oak and umbrella pine with hunting activities as an important economic activity.

Parque da Pena

Parque da Pena is a forest park in Sintra, a town near Lisbon that is presently famous for leisure activities and a major touristic attraction for its beauty and architectural heritage. It was built in the XIX century by D. Fernando, husband of the Portuguese Queen D. Maria, around one of their Palaces. The park was planned in a natural way, taking advantage of the mountainous area, the fertility of the soil and the characteristic micro-climate, natural conditions that allowed the use of multiple forest species from all over the world. Nowadays, the Park is fantastic Arboretum with more than 2000 species from all over the world. The Park also includes innumerable buildings of high architectonical value.

Visit to RAIZ, Research Institute for Paper and Forest

RAIZ is located in Quinta do Eixo, Aveiro, and includes research programs in technology of pulp and paper production and on forestry related mainly with sustainable forest management of eucalyptus plantations. The specific objectives of RAIZ's forestry research program are the increase of the productivity of eucalyptus forests, the implementation of sustainable forest management practices and the decrease of the cost of wood, in a long term perspective that assures sustainable genetic, environmental and economic gains. The objectives of the technological research area the improvement of the quality of pulp and paper, decrease costs production and minimize the environmental impacts.

PORTUCEL/SOPORCEL Pulp & Paper Company in Figueira da Foz

The Portucel Soporcel group has three main pulp and paper mills in Setúbal, Figueira da Foz and Cacia, that can be considered as a reference in Europe due to their dimension and technological characteristics. This technical visit will focus on the Figueira da Foz mill.

PORTUCEL/SOPORCEL Pulp and Paper Company in Cacia

The Portucel Soporcel group has three main pulp and paper mills in Setúbal, Figueira da Foz and Cacia, that can be considered as a reference in Europe due to their dimension and technological characteristics. This technical visit will focus on the Cacia mill.

PORTUCEL/SOPORCEL Pulp and Paper Company in Setúbal

The Portucel Soporcel group has three main pulp and paper mills in Setúbal, Figueira da Foz and Cacia, that can be considered as a reference in Europe due to their dimension and technological characteristics. This technical visit will focus on the Setúbal mill.

ALTRI pulp and paper companies, Celbi – Figueira da Foz

Celbi has at present an annual production of 305 000 ton of BEKP, with Europe has the main market, for the production of fine papers and tissues. Celbi PP brand is recognized in the market by its high quality, namely in what concerns width and consistency as well as physical and chemical properties.

ALTRI pulp and paper companies, Caima – Constância

Caima has an annual production 115.000 ton of fibers of short length with TCF bleaching (Totally Chlorine Free). More than 90% are produced for the European market for paper production, namely high segments of tissue paper and high quality printing paper for the markets of Northern and Central Europe (namely Germany).

Natural Park Reserve of Arrábida

Arrábida represents a rare example of very ancient Mediterranean vegetation, which over time has been moulded by the climate and has survived to the present day due to the specific ecological conditions of the area and has maintained its surprising, exuberant and luscious appearance.

Other suggestions to be considered:

- ✓ *Natural Park Reserve of Southern Alentejano*
- ✓ *Pine nuts industry in Alcácer do Sal*
- ✓ *Cork industry in Coruche*
- ✓ *Cork industry in Ponte de Sôr*

Programme for Accompanying Persons

Suggested Cultural Visits & Tours

Old Lisboa by Tram



Since 1905 this is one of the most commonly used public transportation in Lisboa. The emblematic vintage trams can be hired in exclusive for a tour of the hills, visiting for example the oldest parts of the city. Start at the Commerce Square by the river and end at the "Portas do Sol" viewpoint in Alfama and walk to the Castelo São Jorge. To immortalise the magnificent views from the ramparts why not let the participants try their hand with aquarelle painting.

Minimum number of people per tour: 20

Cost per person: 86.00 €

Portuguese National's Tiles Museum



Enjoy a guided visit to one of the most famous and important Museums offering an introduction to the art of the glazed tiles. This introduction can be followed by a visit to a workshop where the participants can "show" their artistic skills painting with a steady hand a tile of their own.

Minimum number of people per tour: 20

Cost per person: 60.00 €

Sintra Tour with Old Timers



Tour the Sintra hills in style. The well kept Old timers are perfect for a panoramic tour in the luxurious green of Sintra. Start in the historic centre, climb to Pena Palace, the royal summer residence, stop to admire the views by Seteais Palace Hotel and continue towards the coast enjoying the fantastic scenery, end the tour with lunch in a seafood restaurant on beach road of Guincho.

Minimum number of people per tour: 20

Cost per person: 127.00 €

Lisboa City Tour



Visit Belém, a riverside area with a profusion of imposing monuments dating from the golden era of the Portuguese Discoveries in the XV century. See Belém Tower, a jewel of the Portuguese Baroque Manueline style. It used to be a river fort in mid-stream, but is now on the bank. Pass the monument to the Discoveries in the shape of a caravel sail with Prince Henry the Navigator on the prow, before visiting the Jerónimos Monastery and cloister. Perhaps

the most grandiose monument in Lisboa, it was built in 1502 and is a superb example of the intricate Manueline style of architecture, which is unique to Portugal.

Minimum number of people per tour: 20

Cost per person: 60.00 €

Óbidos, Nazaré and Fátima - Central Portugal *



Castles and imposing monasteries are the emblems of this region. But it also has genuine fishing beaches, picturesque villages and towns perched above the sea on towering cliffs, the finest grottoes and acres of fragrant coastal pinewoods. Óbidos is a beautiful, walled medieval town, which was recently declared World Heritage. Caldas da Rainha is a spa founded in 1485 with a colourful market in the main square. Alcobaça is a former Cistercian Monastery built to celebrate the 1147 victory against the Moors. Nazaré is (Portuguese for Nazareth) a fishing village famous for its flat-bottomed boats, fishermen wearing black stocking caps and fisherwomen's seven colourful petticoats. Batalha is the Monastery of the Battle, a gothic masterpiece built to commemorate the Portuguese victory over the Spaniards in 1385. It houses the tomb of Queen Philipa of Lancaster and also her children - and most notably Henry the Navigator. The Marian Sanctuary of Fátima attracts millions of visitors. It is a hill town, with a XXth century neo-classical basilica and a square said to be twice as big as St. Peter's in Rome. This is where in 1917 three young shepherds saw a series of miraculous visions climaxed by the solar phenomenon witnessed by thousands. In 2000 it received the third visit by the Pope who canonised two of the young shepherds.

Minimum number of people per tour: 20

Cost per person: 120.00 €

Évora - Southern Portugal *



Évora is a very beautiful and interesting town surrounded by ancient walls, which give it a mysterious ambiance. UNESCO classified it in 1986 as the "Museum City" and "world Heritage" site. It was first colonised by the Celts and then by the Romans and still boasts ruins dating from 3500 BC.

Minimum number of people per tour: 20

Cost per person: 150.00 €

Other Tours & Visits Available

Labyrinths Tour in Alfama

Taking place in the oldest quarters of ancient Lisboa, this tour is presented with a road book where the participants working as team have to follow the clues given and at the same time learn about Lisboa's history using a Polaroid camera and their imagination.

* Including lunch

Treasure Hunts

To discover the modern part of the city we will take you to Nations Park Here, where the present is the future we invite you to travel through history on a treasure hunt where the pirates will use buggies instead of boats and the treasure, although not real diamonds are typical Lisboa gifts and the wide surrounding Ocean is the Tagus river.

Portuguese School of Equestrian's Art

Ladies and Gentlemen, the Portuguese School of Equestrian's Art have the pleasure to present a unique Equestrian Show! The stage are the baroque gardens of National Palace at Queluz and the stars of the show are the magnificent "Lusitano" a Portuguese race bred at the former Royal Stud founded in the XVIII century by the Portuguese King João V. The show is divided in several parts, the quadrille representing the Grand Finale!

Sample Portugal's Best Wines

Situated on the slopes of Sintra hill, the Adega Regional de Colares is the perfect place for an unforgettable wine tasting, this wine region is one of the oldest and most prestigious of Portugal just after Douro Region (the Port wine region). Sample the local wines before a regional lunch served in the wine cellars. For a more serious tasting, blindfolded participants try to discover the types of wines presented. Entertainment suggestion for the event a duo of Portuguese Guitars.

Sintra By "Caleches"



Immortalised as "little Eden" by Lord Byron, Sintra, a UNESCO World Patrimony is one of the most interesting and beautiful villages with its historical background and natural beauty as back drop. Guests will be picked up at Sintra Train Station by the horse drawn carriages, crossing the historical centre passing the National Palace continuing to the Gardens of the deluxe Hotel Palácio de Seteais where for example afternoon tea/coffee with typical pastry and the rare Colares wine will be served.

Beach Games in Golden Sands of Guincho

For a fun and sunny day we invite you to come to Guincho Beach, situated on the Cascais coast. Arrive by bicycle or coach to this beach well known for its perfect Surf & Windsurf conditions. For those who are not really prepared to for this kind of adrenaline kick we propose soft sport beach games and why not a competition of sand sculptures/ castle building. Barbecue lunch is for everyone....

The Sixth Sense Tour



Walking rally in the village of Sintra using a road book. Includes representation of historical characters. Use of one's senses to perceive items relating to Portuguese Culture and history. Watercolour painting and clay modelling. Creative poetry. A taste of coffee. Arrival at the historic centre of the village of Sintra. Organise the group using scarves or other items of

various colours. Start of the rally near *Palácio Real* next to the belvedere where king D. Fernando II will be to meet them. The guests will have to do some watercolour painting inspired by the beautiful sights of Sintra (SIGHT). Afterwards the guests will walk to the *Parque das Merendas* through the village's historic centre. There, they will find Vasco da Gama who will invite them to identify spices brought from the East (SMELL). They will still be able to create a piece in clay and identify several typically Portuguese products like linen, cork and others, helped by some monks (TOUCH). Still inside these gardens they will taste Portuguese wines and describe them (TASTE). After the time spent in *Parque das Merendas* it is the moment to visit Café Paris in the centre of the village to have some coffee and relax. They will then meet Lord Byron reciting poetry. Listening to him they will be inspired to write some poetry themselves (HEARING).

Pre & Post Congress Tours

Natural Park Reserve of Peneda Gerês

Suggested post congress technical tour



A vast amphitheatre sculpted by geologists, wind and water, the Natural Park Reserve of Gerês Peneda stretches from Castro Laboreiro to Mourela and covering four mountain ranges along the way. From the heights of the mountains one can see the visible effects of the last ice age – glacier circles, small lakes and U-shaped valleys.

Nature and relief orientation, altitude variations and Atlantic, Mediterranean and Continental influences are reflected in the variation, lushness, abundance and wealth of its vegetation.

The whole of this landscape is hard to find in Portugal and incomparable as a demonstration of variety and natural wealth in the Iberian Peninsula

Oporto - Northern Portugal

Flight (Lisboa/Porto), Transfers, 3 nights /4 days.



It is the second city of Portugal and is well known for its beautiful monuments and world-famous Oporto wine. The city of Oporto, built along the hillsides, which overlook the mouth of the Douro River, forms an exceptional urban landscape with a thousand-year history. It's continuous growth, linked to the sea (the Romans gave it the name Portus, or port), can be seen in its many and varied monuments -- from the Cathedral with its Roman choir, via the neo-Classical Stock Exchange to the typically Portuguese Manueline-style church of Santa Clara. UNESCO classified OPORTO, in December of 1996, as the World Heritage City. OPORTO was also chosen as the 2001 Cultural Capital of Europe. This means that during 2001 it will be organizing a diversity of wonderful events that you may wish to see.

Vila Moura - Southern Portugal

The golden sandy beaches and gently lapping waters give the Algarve more of a Mediterranean than Atlantic flavour: Warmed in water by air from Africa and cooled in Summer by breezes from the Atlantic, the Algarve enjoys almost 3.000 hours of sunshine all year round. Tiny bays, coves and isolated beaches are separated by extraordinary rocky cliffs whose reds and gold's are magnificently accentuated at sunset.

Azores (Atlantic Islands)

Flight, Transfers, 3 nights / 4 days.

Located far out in the Atlantic some 1,300 km west of the mainland, the Azores is an unspoilt natural haven of unparalleled proportions. Divided into three groups and forming Europe's westernmost tip, the nine-island volcanic archipelago is still one of the MICE industry's best-kept secrets.

The Santiago Route

Follow the route used centuries ago by thousands of pilgrims who travelled the Santiago route towards Santiago de Compostella in Galicia, Spain.

The Roman Route

Travel through an old Roman route. The Romans left many important traces among us of which much evidence still remains today. Travel to the past and relive history as it was.

The Merchants Route

Follow the roads travelled by merchants on their way to old Europe to plight their wares. Travel along mountainous lands with breathtaking landscapes along the Iberian Peninsula.

The Almansour Route

See the remnants left by the Moors in the South of Portugal. The Moors stayed in Portugal for seven hundred years leaving behind traces of their culture in place names, architecture, food and music. Visit the Mosque and the Sultan's Palaces. See their art and habits still alive today in the people who descend from them.

Golf in Portugal

It is no exaggeration to describe Portugal as a golfer's paradise. The main focus of attention is in the Algarve where there are 20 championship standard 18-hole courses spread along the 150 kms coastline and a number of others under construction or in the pipeline.

Social programme for children

For those who wish to bring along their children, we are happy to inform you that we will organize special programmes to meet their needs if the total number of children justify it.

We will also arrange responsible, caring babysitters who will take care of your children if you so desire.

Innovation

Features

The chosen Professional Congress Organiser is considered one of the top **100 meeting professionals in the world**. As such she has planned many innovative initiatives and events that will serve to increase awareness and raise the status of Forest Research not at an Iberian Peninsula level but also everywhere.

The following are among the many initiatives and innovations being planned:

Feature 1

The Congress will commit to raise funding to **host** 50-100 SAP (Scientist Assistance Programme – depending on budget) from developing countries. These young professionals will see their travel, registration and accommodation supported or partially supported by the local organisers. Applicants will have to comply with pre-defined criteria.

Feature 2

The organisers will commit to raising awareness of the sector and the profession through media campaigns and events in the year prior to the Congress.

Feature 3

Organisers will organise a ceremonial tree planting with congress plaque in the Sintra Mountain Range which has seen its forestry area ravaged by constant fires over the last years and is a symbol of the Maritime & Discoveries Era and so has a symbolic reference.

Feature 4

The congress will allow organisers, sponsors and academic institutions to organise Symposia which will take place throughout the week and will also include debates on “hot topics”

Feature 5

There will be a university-industry marketplace which will facilitate the development of new innovations and support for research.

Feature 6

A Job fair will also be organised in the form of a networking lounge with meeting table areas

Feature 7

Academic luncheons will take place with scientific and university experts for students and fellows, providing a unique opportunity to bring together renowned professors and future leaders in a cordial and friendly setting.

Feature 8

The Congress will be a **green event** & sustainable event focusing recycling and reusing materials and supplies in general as well as health and community social responsibility initiatives. **Health and Security** will be a major concern although Portugal has a negligible crime rate. A **Risk analysis** will be produced and there will be on-site medical services as well as the event being fully covered by insurance.

Feature 9

A technology marketplace will also help researchers, students and academics (specially from those parts of the world where technology transfer is not yet well established) to find support for their ideas and new inventions in related fields. The goal is to link the student and academic and Professional with potential backers or employers who can underwrite further development, marketing or manufacturing, just share information or provide career opportunities.

Green Meetings - Good for the Earth & Good for Business



To continue to enjoy the quality of life we treasure we all need to work and live in a more sustainable manner. For this meeting this involves making a concerted effort to reduce our use of resources and the amount of waste that results from the meeting activities.

What is in store at XXIV IUFR0 World Congress?

The Organisers are inviting delegates to attend a meeting focused on sustainability.

- ✓ To drive the sustainable focus, the Organiser's have approached all conference aspects with resource-consumption awareness. Meetings geared toward sustainability have three main goals: they are good for business; good for the Earth; and benefit host communities.

You will see these principals incorporated throughout the congress including:

- ✓ Badges will be recycled after the congress
- ✓ Printed promotional materials such as post cards and brochures have been dramatically reduced in size/length and printed on recycled paper with more information posted online
- ✓ Where possible, locally grown organic foods will be used at event functions
- ✓ Earth-friendly promotional products will be distributed at the conference
- ✓ The conference programme will be printed on the first few pages of the padfolio delegates receive at registration, resulting in one less printed brochure
- ✓ Water will be served in jugs and not plastic bottles whenever possible
- ✓ Donation of un-served food to soup kitchens, homeless shelters or other community service organizations. All left over materials (such as bags, padfolios etc.) will be donated to a local primary school.
- ✓ Collection and distribution of leftover exhibit materials to charitable organizations.
- ✓ Providing un-used office supplies and equipment to local schools or charitable organizations.

Setting aside free exhibit space for local non-profit organizations

Financial Plan & Budget Overview

General Considerations

The Organisers of **the XXIV IUFRO World Congress** will include the following elements in their planning and budget considerations:

- ✓ Values, vision, mission, goals and objectives of the international Association
- ✓ Activity Plan for events in the two years leading up to the 2014 Congress to raise awareness of this field
- ✓ Production of a financial plan that includes all the sources of funding, a continuous and ongoing carefully monitored set of financial and cash flow projections.
- ✓ The contracting of a local VAT expert
- ✓ A detailed and highly proactive plan for achieving sponsorship revenue and value-in-kind support
- ✓ A risk management plan
- ✓ A sustainability and green plan, and provision for an environmental scan that is to be regularly updated
- ✓ A human resources plan that includes volunteers who will benefit from the learning experience this event will provide
- ✓ A marketing plan with a view to increasing association membership
- ✓ A security & health plan to be developed
- ✓ A communications plan
- ✓ A networking lounge for prospective employers and students to Exchange information and create employment opportunities

Anticipated Expenditure & Anticipated Revenue

Budget Summary

Expenditure – Based on estimated 2.000 delegates

Items	Amount
Venues	OVERESTIMATED EXPENDITURE
Speakers	
Organisation & Administration & Staffing	
Events & Committee expenses	
Social Programme	
Social Responsibility	
Speakers & VIP expenses	
Materials	
Others	
Insurance	
International Association	
Banking Costs	
Total	1.270.358,00 €

Income (underestimated) - Based on estimated 2.000 delegates

Items	Quantity	Amount	Sub-Total	Additional Information
Delegate Fees	1500	600,00 €	900.000,00 €	Early Bird Fees
Other Delegates	500	450,00 €	225.000,00 €	Early Bird Fees
Accompanying Person	450	400,00 €	180.000,00 €	Early Bird Fees
Exhibitions	60	3.500,00 €	210.000,00 €	
Satellite Meetings	5	6.500,00 €	32.500,00 €	
Sales of Merchandise	1	5.000,00 €	5.000,00 €	
Sponsors/Donations	1	100.000,00 €	100.000,00 €	
Total			1.652.500,00 €	

Estimated revenue - Based on estimated 2.000 delegates

	Amount
Total Expenditure	1.270.358,00 €
Total Income	1.652.500,00 €
BALANCE	+ 382.142,00 €

Proposed Congress Fees

All prices are quoted in Euros but do not include current VAT (Value Added Tax) of 20% (which may be subject to various changes over the next few years due to the current economic crisis). All payments must be made in Euros. For updated currency conversion rates, please visit www.xe.com.

Registration Fee Table

	Early bird - Before 1 May 2014	Full - After 1 May 2014 Before 31 July 2014	Late (onsite) - After 31 July
Developed Countries	600.00 €	700.00 €	830.00 €
Developing Countries / Economies in Transition	450.00 €	550.00 €	650.00 €
Accompanying Person	400.00 €	400.00 €	500.00 €
Student	400.00 €	400.00 €	500.00 €
Day	300.00 €	350.00 €	500.00 €

Registration Inclusion

Item	Developed Countries	Developing Countries	Accompanying Person	Student	Day
Name badge	✓	✓	✓	✓	✓
Congress Bag	✓	✓	✓	✓	✓ ²
Handbook	✓	✓		✓	

² On designated day of registration only

Item	Developed Countries	Developing Countries	Accompanying Person	Student	Day
Abstracts Publication	✓	✓		✓	
Entry to Sessions	✓	✓		✓	✓ ³
Entry to Trade Exhibition	✓	✓	✓	✓	✓ ⁴
Refreshment Breaks, Lunches	✓	✓		✓	✓ ⁵
Welcome Reception	✓	✓	✓	✓	
In Congress Tours	✓	✓	✓	✓	
Farewell Gala Event	✓	✓	✓	✓	

Registration Types and Eligibility

Developed Countries

This applies to all delegates from countries not listed on the United Nations list

Developing Countries

This applies to delegates who citizens are of and who permanently live and work in one the countries listed on the United Nations List

Accompanying Persons

Persons accompanying a registered delegate of the XXIV IUFRO World Congress may register under this category. A range of additional day tour options have been designed for travel companions.

Student

Delegates registering at the Student rate must be fulltime students at a tertiary institution/university. Students must submit a copy of their current student card confirming their fulltime status with the registration form when registering for the congress.

Day Delegate

This applies to those who wish to attend the Congress for one day only.

³ On designated day of registration only

⁴ On designated day of registration only - Mon, Tues, Wed

⁵ On designated day of registration only

Track Record of the Local Organiser

CPL EVENTS

CPL EVENTS has been organising international congresses for over 20 years in over 70 destinations around the world. The Senior PCO and Executive Director, Linda Pereira is a member of the most prestigious international Professional associations and can provide references upon request. She is also an international consultant for the meeting industry. Among the events organised in Portugal only:

- ✓ Moores Rowland Annual Conference, Lisboa (1200 delegates worldwide)
- ✓ Europartenariat Congress, Lisboa (6500 delegates/975 exhibitors including the European Union)
- ✓ European Federation of Economists Congress, Lisboa (2300 delegates)
- ✓ Prevention and Combat of Organised Crime in the South of Europe Conference, Lisboa
- ✓ International Euro-Toques Congress, Vilamoura
- ✓ Europe, European Identity of Safety and Defence Seminar, Lisboa
- ✓ I Infarmed Conference, Lisboa (Pharmaceutical companies and medical entities)
- ✓ Conference of State Lotos in the American Iberia, Lisboa (2780 delegates)
- ✓ E.S.P.O. – European Sea Port Association Congress, Lisboa
- ✓ 16th ESRI EMEA User Conference, Lisboa (4570 delegates)
- ✓ 12th ITMIC - International Technology Meetings and Incentives Conference, Carcavelos
- ✓ EUROSAI Conference, Lisboa (European Supreme Audit Institutions & observers)
- ✓ Portuguese Presidencies of the EU 1992/200/2007, Lisboa
- ✓ International Defense Congress, Lisboa
- ✓ Financial Fraud in the new Millennium Congress, Lisboa
- ✓ Congresso da Associação Veterinária Euro-árabe (3270 delegates)
- ✓ DIA (Drug Information Association) EuroMeeting Congress (2750 delegates and 175 exhibitors)
- ✓ International Cannabis Congress
- ✓ ICTE International Conference – Tourism and Environmental Certifications (ISO and EMAS) and Eco-Labels
- ✓ International Congress on Illicit Drug Trafficking
- ✓ Congresso ECIS (European Council of International Schools) (1790 delegates)
- ✓ International Football Congress leading to EURO 2004
- ✓ EAA – European Accounting Association (1690 delegates from over 90 countries)

Bids Won and Congress Pending

- ✓ VISTA 2011 in Estoril – Paralympic Conference
- ✓ ISPD 2012 in Lisboa - 14th Congress of the International Society for Peritoneal Dialysis
- ✓ WCEE 2012 in Lisboa – 15th World Congress on Seismic Engineering (expecting 4800 delegates)

Company Profile

CPL Events is a private capital Anglo-Portuguese company whose Core Business is the professional organisation of congresses and incentives and the provision of complete services for national and international clients.



Founded in 1987, CPL Events has wide experience in the professional organisation of national and international congresses, in the most varied of areas. We can provide all necessary services for events, having organised over 400 events of from 200 to 10,000 participants and from 200 to 4,000m2 of exposition space. Our company record is a technical event for 27,000 people in the USA. Our services

include all financial administration, including budgets, VAT, clear accounting, through attention to detail in the planning of all elements: logistics of the location, technology, scientific programme, social and cultural visits. We also have specialised departments in the area of marketing and legal support, with special attention paid to increasing the number of delegates participating, maximising the sale of stands and sponsorship assistance. CPL Events provides advanced information technology, from online support to abstracts, registration, payment and exhibition administration. The friendly team at CPL Events, despite having unrivalled experience and expertise, still maintains its personalised attention to planning and a friendly approach. The quality of the service provided by CPL Events is recognised by all of its clients and by members of the most prestigious international professional associations of which we are part. CPL Events is the only company issuing the international certificate of professionals for the chapter of the IAHP – International Association of Hispanic Meeting Professionals, based in the United States of America.

CPL Events is not only a dream team but also a team that turns the impossible into reality.

The Project Manager – Official PCO



Linda Pereira is the senior partner and CEO of the L&I Communications Group. She is also Executive Director of CPL Events. As a PCO (**Professional Congress Organiser**) she is one of the first graduates in this speciality and probably the only one in Portugal. Linda is also a qualified educator, and international speaker. She is recognised by her peers as one of the top 100 Meeting Industry Professionals in the World. Her PR, marketing and event experience was gained during her time as a professional Interpreter and advisor

whilst travelling all over the world accompanying Members of Government and has been present in the most important events which have marked recent history. Her expertise in protocol and business etiquette as well as cross-cultural communication have given her a privileged status as a consultant in government circles and at the highest corporate levels. Her work in the Meeting Industry led her to take a Master's Degree in Adult Education. She is proud to have been involved in countless large-scale meetings at an international level and to have played an important role in the two European Presidencies held by Portugal as well as EXPO'98, the last World Exposition of the XXth century. Respected internationally as a speaker she is continually being invited to speak to professionals in the Business Travel Sector and has lectured in countries such as Italy, Spain, Russia, Egypt, Cape Verde, United Kingdom, Dubai, Spain and The Netherlands and for the UNWTO to name just a few. She also lectures and coordinates the Masters **in Strategic Event Planning at the Estoril Hospitality University** and is an **"invited lecturer"** at Essex, Westminster and Temple Universities where, once a year she

lectures a Master Class in “Strategic Meeting Planning & Management”. She recently adapted this course to the European Market and organises an educational one-week seminar for the Portuguese Market once a year, although even this course has become very international over the last three years attracting students from a myriad of countries.

Linda Pereira is the major shareholder and founder of three successful companies dedicated to international congress management and provision of services to meeting planners with representation in Lisboa, Manchester, Barcelona and Madrid and more recently Cape Verde.

She is continuously called in as a consultant to International Hotel Groups on staff training and has earned the nickname of the *Destination Diva* among her peers for her expert knowledge on Meetings & incentive Destinations and her focused attention to detail when it comes to quality service.

She is a member of some of the most prestigious international associations. Over the last few years she has dedicated herself to promoting emerging destinations.

She is a member of **SITE** – Society of Incentive Travel Executives, **MPI** – Meeting Planners International. In 2007 becoming a member of the Education Committee responsible for the Marketing & Sales Programme she is a member of the Board of Directors of **WECAI** – Women’s e-Commerce Association International and a permanent travel writer for the **WE Magazine**; Vice-President of **ADVP** – Portugal’s Sales & Marketing Association, President of the Iberian Chapter of **IAHMP** – International Association of Hispanic Meeting Professionals and sits on their Education Committee, Member of a **Panel of International Experts** for the Development of Business Travel in Russia. She is also an active board member of her three national professional associations.

Linda Pereira was consultant to the Azores Convention Bureau for 3 years. Consultant to Sochi Convention Bureau for 2 years and is currently the consultant to the Estoril Congress Centre, UNOTUR in Cape Verde and the Arab Emirates.

Opinions on Destination & Testimonials



"(...) The first thing that hits you upon arrival is the light. Lisbon is blessed with that intense Mediterranean light that enraptured the impressionists. As so many of its buildings are of white stone, it is no surprise that Portuguese call Lisbon the "white city".

As the 100-year-old trams, with their leather hand straps and wooden interiors, screech and clang their way through narrow streets, you catch tantalising glimpses of blue water in the distance. At times the streets are tight narrow that you can practically touch the tiled façades of houses and shops. (...)"



"(...) The more adventurous will relish the eclectic and cultural Bairro Alto and Chiado neighbourhoods, where you can find traditional linens and ceramics, design shops, theatres and restaurants. Some fascinating historical sites lie around the Convento do Carmo in the Chiado, connected to the lower Baixa by the Santa Justa elevator, daring back to 1902 and designed by a disciple of Gustave Eiffel.

In the 15th and 16th centuries, the Portuguese capital of Lisbon was a major trading port and the departure point for several great voyages of discovery. Now it's Lisbon itself that is being rediscovered as one of most cosmopolitan and vibrant - not to mention warmest - cities in Europe. (...)"

THE INDEPENDENT

"(...) Lisbon is a great place for serendipitous wandering: you don't stick around for long. In one bar; one restaurant, one shop, one street, one fado room. Hedonists will, however; stick to just one district. Sublime, gorgeously decadent, hectically multifaceted, the Bairro Alto is a grid of seven long avenues and a dozen lateral streets in which you can wander all weekend.

Rossio is the bustling heart of the city traversed all day by tourists, people watchers. Crossing the main square is an experience, because the cobblestones - ranged in a wavy mosaic pattern - wobble before your eyes like a Bridget Riley painting and disorientate you until you require a little sit-down at the Suiça Pastelaria, for a coffee and one of the little custard tarts (pasteis de nata) that are a city favourite.

The third landmark is Castelo de São Jorge, whose battlements can be seen from all over the city. Today, when you walk through the great archway and into the gardens, you're in the ancient heart of Lisbon, where an Iron Age settlement was occupied, in turn, by Romans, Visigoths and Moors. But it's good to walk around the walls, to see how the city's districts fit together; marvelling at the river Tagus. (...)"

Condé Nast Traveller *"(...) Europe's cradle of discoverers, where the days last all night long, emerges a city to be discovered".*

"Each boulevard leads to another open plaza, so I rarely find myself in shadow. Lisbon goes from light to light."

"After dinner, just when the cobblestone streets seem quiet, the corps of Lisbon's nightlife begins to appear. (...)"

ELLE DECOR

"(...) The city at the very edge of Europe has always been a gateway and a crossroads, but now the world is discovering its distinct culture and charms.

White, romantic, and soulful-these are the words most often used by guidebooks to evoke the allure of Lisbon... Fair enough, but Lisbon's charms are infinitely more bountiful and complex. And those words don't even touch upon the energetic and cosmopolitan city that the Portuguese capital is today.

Vintage cable cars clank along steep streets that reveal sweeping vistas of the glorious Ponte 25 de Abril stretching across the Sea of Straw, as the Tagus's broad estuary is known for its habit of shimmering gold in the sunshine. (...)"

Support Letters of Intent

**MINISTRO DA AGRICULTURA, DO DESENVOLVIMENTO
RURAL E DAS PISCAS**

IUFRO President
Prof. Don K. Lee
International Union of Forest Research Organizations
IUFRO Headquarters - Secretariat
Mariabrunn (BFW), Hauptstrasse 7
A-1140 Vienna
Austria

Lisbon, December 26, 2008

Prof. Don. L. Lee,

As Ministry of Agriculture of Portugal I have the pleasure to invite the International Union of Forest Research Organizations (IUFRO) to organize the 2014 World IUFRO Congress in Lisbon, Portugal. We will give our full support to the Technical University of Lisbon (UTL) in the organization of this important event.

We look forward to supporting and welcoming colleagues from around the World in Lisbon, in 2014.

Sincerely yours,



Jaime Silva



IUFRO President
Prof. Don K. Lee
International Union of forest Research
Organizations
IUFRO Headquarters – Secretariat
Mariabrunn (BFW), Hauptstrasse 7
A-1140 Vienna, Austria

Coimbra, December 2008

Dear Professor Don K. Lee

As President of the Natural Resources, Environment and Society Research Center (CERNAS), I am very pleased to inform the International Union of Forest Research Organizations that we support enthusiastically the proposal to host the 2014 World IUFRO Congress in Lisbon, Portugal.

The CERNAS is a Research Unit of the Portuguese System of Science and Technology, hosted by the Schools of Agriculture of Coimbra and Castelo Branco, created in 2003, that integrates an area of Forest Resources, mainly devoted to forest sustainable management.

We look forward to welcome the 2014 World IUFRO Congress in Lisbon and the colleagues from around the world.

Yours sincerely

(Prof. Fernando Páscoa)



ESCOLA SUPERIOR AGRÁRIA

IUFRO President
Prof. Don K. Lee
International Union of Forest Research
Organizations
IUFRO Headquarters - Secretariat
Mariabrunn (BFW), Hauptstrasse 7
A-1140 Vienna, Austria

Coimbra, December, 2008

Prof. Don. L. Lee,

We have the pleasure to inform the International Union of Forest Research Organizations (IUFRO), that the Escola Superior Agrária de Coimbra enthusiastically supports the proposal to host the 2014 World IUFRO Congress in Lisbon, Portugal.

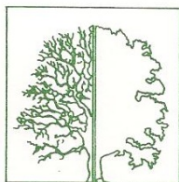
The Escola Superior Agrária de Coimbra is one of the leading Politechnical Schools of Agriculture and Forestry of Portugal, and is currently involved in research efforts and educational programs focused on forest ecology, forestry, and sustainable forest management.

We look forward to supporting and welcoming colleagues from around the World in Lisbon, in 2014.

Sincerely yours,

The President of the School


(Prof. Dr. Carlos Dias Pereira)



**Sociedade
Portuguesa
de Ciências
Florestais**

DEPARTAMENTO DE ENGENHARIA FLORESTAL
Tapada da Ajuda — 1349-017 Lisboa

IUFRO President
Prof. Don K. Lee
International Union of forest Research
Organizations
IUFRO Headquarters – Secretariat
Mariabrunn (BFW), Hauptstrasse 7
A-1140 Vienna, Austria

Lisboa, December 2008

Dear Professor Don K. Lee

As President of the Portuguese Society of Forest Sciences (PSFS), I am very pleased to inform the International Union of Forest Research Organizations that we support enthusiastically the proposal to host the 2014 World IUFRO Congress in Lisbon, Portugal.

The Portuguese Society of Forest Sciences is a non-profit non-governmental scientific and technique organization, created in 1983, that gets together not only scientists in the forest science areas, but also silviculturists, forest engineers and other professionals dealing with forests, as well as students of different areas. The aim of the PSFS is to contribute to a better practice in dealing with forests, through the organization of seminars, conferences, workshops, nets of common interests and targeted courses and, every 4 years, organizing the Portuguese Forest Congress.

We look forward to welcome the 2014 World IUFRO Congress in Lisbon and the colleagues from around the world.

Yours sincerely

(Prof. Fernando Páscoa)



Hinc patriam sustinet

Instituto Superior de Agronomia
Universidade Técnica de Lisboa

Conselho Directivo

IUFRO President
Prof. Don K. Lee
International Union of Forest Research Organizations
IUFRO Headquarters - Secretariat
Mariabrunn (BFW), Hauptstrasse 7
A-1140 Vienna, Austria

Lisbon, 23 December, 2008

Dear Prof. Don. L. Lee,

I have the pleasure to inform the International Union of Forest Research Organizations (IUFRO), that the “Instituto Superior de Agronomia” (ISA), Faculty of Agronomy, Technical University of Lisbon (UTL) enthusiastically supports the proposal to host the 2014 World IUFRO Congress in Lisbon, Portugal.

As the leading Forestry School of Portugal, ISA has been involved in research efforts and educational programs focused on forest ecology, forestry, sustainable forest management and forest products technology.

We look forward to supporting and welcoming colleagues from around the World in Lisbon, in 2014.

Sincerely yours,

President of Executive Board,

Prof. Doutor Carlos Noéme



1st December 2008

LETTER OF INVITATION to IUFRO

IUFRO WORLD CONGRESS 2014

Dear Mr President,

As IUFRO member organisation with partners and activities in Portugal, and as hosting institution of European Forest Institute (EFI) regional office for the Atlantic Forests of Europe, IEFC would like to confirm its full support and sponsorship for the organisation of IUFRO World congress in 2014 in Lisbon.

Yours faithfully,

IEFC President

I Martinez de Arano

INSTITUT EUROPÉEN
DE LA FORÊT CULTIVÉE
INSTITUTO EUROPEO
DEL BOSQUE CULTIVADO
INSTITUTO EUROPEU
DA FLORESTA CULTIVADA
EUROPEAN INSTITUTE
OF CULTIVATED FOREST

Site de recherche Forêt - Bois
69, route d'Arcachon
33612 CESTAS - France
Tél. : +33(0)5 57 12 28 03
Fax : +33(0)5 56 68 02 23
Email : secretariat@iefc.net

SIRET : 422 480 293 00014
APE : 731 Z

www.iefc.net

Managing Director
IUFRO

Ref.^a: CF/PO
Lisboa, 15th December 08

Subject: **XXIV World Congress of IUFRO, Lisboa 2014**

Dear,

It gives us a great pleasure to learn that CPL Events decided to bid for the organization of the
"XXIV World Congress of IUFRO"

We would like to emphasize our interest in hosting this Event in our city and therefore we will
provide all possible support to its materialization and success.

Allow us to remind you of the light and beauty of Lisboa. The advantage of the prevailing
mild weather and the historical heritage of the Discoveries, the proximity from most
European cities and the Americas.

The existing quality hotels and modern meeting facilities and the professionalism of our
Incoming Travel Agencies and Conference Organizers. Certainly, all these factors will
contribute to make Lisboa the ideal venue for your event.

Hoping to hear from you in the near future, we remain

Yours sincerely



Paula Oliveira
Executive Director

**TURISMO
DE LISBOA.
VISITORS &
CONVENTION
BUREAU.**

PESSOA COLECTIVA DE
UTILIDADE PÚBLICA
NOS TERMOS DO
DECRETO-LEI 460/77,
DE 7 DE NOVEMBRO
NIF: 501 880 160

R. DO ARSENAL, Nº 15
1100-038 LISBOA
TEL: (+351) 210 312 700
FAX: (+351) 210 312 899
www.visitlisboa.com



MINISTÉRIO DO AMBIENTE, DO ORDENAMENTO DO TERRITÓRIO E DO DESENVOLVIMENTO
REGIONAL

IUFRO President

Prof Don K. Lee

International Union of Forest Research
Organizations

Data: 18.12.2008 Nº Refª /DG/2008 V. Refª.

Assunto: International Union of Forest Research Organizations World Congress –
2014.

It gives us great pleasure to learn that the Technical University of Lisbon has decided to bid for the organization of the International Union of Forest Research Organizations World Congress in 2014.

The Portuguese Geographic Institute has a special interest in supporting the organization of the event, regarded as a unique opportunity for exchanging experiences and know-how on the area of forest research.

This is, in fact, a subject of vital political and strategic relevance for our country and on which valuable resources have been invested, both on research and specific cartographic products, for instance, the production of a land cover and land use cartography for Continental Portugal.

We look forward to hearing from you,

Arménio dos Santos Castanheira

General Director

Welcome to Portugal

Warm hospitality is part of Portuguese nature...

An ever-present ancient tradition expressed by a very friendly and spontaneous smile that could make a casual meeting a

friendship for life. This, on its own, is enough to make a trip to Portugal an irresistible temptation.



António Sacchetti



See you in Portugal in 2014