

Congress Organizing Committee

Summary Report



Fredrik Ingemarson

ACKNOWLEDGEMENT

THE INTERNATIONAL UNION of Forest Research Organizations World Congress 2024 would not have been such a success without the hundreds of individuals and subcommittees that contributed their valuable time, energy, and advice during the preparations and implementation of the congress.

The Congress Organizing Committee (COC) is proud of its achievements on budget and humbled by the positive response to the largest and most inclusive IUFRO World Congress ever. The committee consists of members from co-host organizations in the Nordic and Baltic countries, most already engaged since 2010. The COC worked actively in the strategic preparations, worked to secure financial support and selected the awardees for the Host Scientific Awards. Thanks to the leadership of COC, regional support was at a historically high level. In accordance with the theme *Science and Society Towards 2050* the Congress Scientific Committee put together a diverse and high-quality scientific programme, which was successfully implemented thanks to the tireless efforts of the organizers and moderators of plenary, sub-plenary, technical, and poster sessions.

The IUFRO headquarters team secured the framework and continuity of the congress. Their assistance was indispensable. The IUFRO Management Committee and the Board approved action plans and gave clear directives, while offering valuable insights and leadership. One prerequisite for the successful management of the congress is the work of leaders and staff at the host organization, the Swedish University of Agricultural Sciences (SLU). Based on cost projections and risk assessments, the steering group allocated budgets for the congress secretariat, resulting in a dedicated and highly performed work by the staff. The secretariat's support to the COC and the coordination of subcommittees formed the core of the implementation.

SLU's researchers, the largest delegation at the congress, were truly successful in carrying out the in-congress excursions. Researchers and students

from the Nordic and Baltic region, and the enthusiastic volunteers from all over the world were the best possible ambassadors for the congress.

The early support from the Nordic Council of Ministers, Nordic Forest Research, Formas research council, Swedish Forest Agency and Skogssällskapet Foundation, was decisive. Thanks to the official partners, a wide range of stakeholders and scientists were able to gather and co-create. Partners such as the International Forest Student Association, Nordic Forest Research, and the Erling Persson Foundation were instrumental in the exhibition and arenas, such as the Green Job Arena and the Innovation stage. The collaboration with IKEA and WWF broadened the global dialogue. The Stockholm Exhibition and Congress Centre was a modern venue with high quality service, which was strongly supported by the professional congress organizer, Akademikonferens. The partner consultants NGO Factory and Traveko Scandinavia helped ensure broad representation among international partners and exhibitors. In addition, there are a number of other organizations and individuals who have helped carry out the congress as planned in areas such as logistics, food distribution, and facilities.

The application process for the IUFRO World Congress was initiated by the City of Stockholm and the Royal Swedish Academy of Agriculture and Forestry (KSLA) through the Think Tank for International Forestry Issues (SIFI). The value of the long-term mentorship offered by SIFI's advisory group cannot be underestimated. Thanks to the enthusiasm of the delegates during the IUFRO World Congress 2024, the event created a platform for progress and dialogue about *Forest and Society Towards 2050*, fully in line with the intentions of the Congress Organizing Committee.

Fredrik Ingemarson

Chair of the Congress Organizing Committee

Content

1.	Congress Organizing Committee	4
2.	Congress programme	5
3.	Congress participation	6
3.1	Congress main numbers	6
3.2	Participant profile	6
3.3	Countries	8
4.	Congress ceremonies	10
4.1	Tree planting ceremony	10
4.2	Opening ceremony	11
4.3	Closing ceremony	11
5.	Congress venue	12
5.1	Organization	12
5.2	Transport	13
5.3	Exhibition	13
5.4	Innovation stage	13
5.5	Green job arena	14
6.	Scientific and side events at the congress	15
6.1	Plenary sessions	16
6.2	Scientific sub-plenary sessions	17
6.3	Science and society sub-plenary sessions	17
6.4	Technical sessions	18
6.5	E-poster sessions	18
6.6	Partner side events	18
7.	Working meetings	19
7.1	IUFRO administrative and divisions	19
7.2	IUFRO International Council	19
7.3	Management Committee and IUFRO Enlarged Board	19
8.	Excursions	21
8.1	Pre- and post-congress excursions	21
8.2	In-congress excursions	23
9.	Social events at the congress	26
9.1	Opening of the exhibition	26
9.2	Welcome receptions	26
9.3	President's dinner	27
9.4	Outdoor mingle	27
10.	Congress partners	28
10.1	Exhibitors	28
10.2	Partners	30
11.	SPDC pre-congress training course	34
12.	Communications during the Congress	35
12.1	Web statistics	35
12.2	App statistics	36
12.3	Social media	36
12.4	Press and media	36
12.5	Newsletter	36
13.	Human Resources	37
13.1	Congress Organizing Committee (COC)	37
13.2	Congress Scientific Committee (CSC)	38
13.3	Congress secretariat	39
13.4	Professional Congress Organizer and scientific support team	39
13.5	Media desk	40
13.6	Volunteer program	40
14.	The Stockholm Congress Statement	42

The Congress Organizing Committee (COC) consisted of delegates representing IUFRO member organisations from all the Nordic and Baltic countries. With its commitment, international experience, knowledge and broad networks in each country, the COC has been crucial for a successful congress. The committee has had a combined decision-making and advisory role during the bidding and the management process of the congress. The COC chair was also responsible for the financial reporting. With a net zero result, the Congress was on budget according to plan for 2019–2025.

Recurring topics for the COC have been strategies for the bidding process and management issues, including financial plans, global trends, partnerships, member recruitment, communication and input to the Stockholm Congress Statement from the Nordic countries. Other topics were ceremonies and not at least pre- and post-excursion tours to the Nordic and Baltic countries. The committee also selected the awardees for the Host Scientific Awards. The COC held its first meeting already in 2010. Meetings in the years before the congress were held approximately every two months on site in Stockholm and Uppsala, as well as online.



CONGRESS PROGRAMME

02

The IUFRO 2024 Congress program in Stockholm spanned an entire week, running from 23 to 29 June 2024. The congress was preceded by pre-excursion tours and concluded with post-excursion tours in the Nordic and Baltic countries ending the first week of July. The congress was structured into scientific sessions, ceremonies, social events, exhibitions, delegate registration, lunch and coffee breaks as shown in Figure 1.

The week kicked off with a tree planting ceremony at Skansen open-air museum, as well as opening ceremonies at the venue, Stockholmssmässan Exhibition & Congress Centre.

During the week, the delegates had the chance to explore the latest research, attend in-congress excursions and participate in administrative meetings. There were also networking opportunities for delegates and stakeholders during lunch and coffee breaks, poster sessions and outdoor mingles, culminating in a closing ceremony and additional awards presentations to celebrate scientific achievements.



	SUNDAY June 23	MONDAY June 24	TUESDAY June 25	WEDNESDAY June 26	THURSDAY June 27	FRIDAY June 28	SATURDAY June 29	
07.00		Registration						
08.30–10.30		Opening Ceremony and Awards <small>Congress Host Scientific Awards</small>	Technical Sessions	In-Congress Excursions	Technical Sessions	Technical Sessions	Sub Plenary Sessions <small>(09.00–10.00)</small> Coffee <small>(10.00–10.30)</small>	
10.30–11.00		Networking, Exhibition and Coffee	Networking, Exhibition and Coffee		Networking, Exhibition and Coffee	Networking, Exhibition and Coffee	Plenary Session and Awards <small>(10.30–12.00)</small> Best Poster Awards (BPA)	
11.00–12.30		Plenary Session and Awards <small>Scientific Achievement Awards (SAA)</small>	Plenary Session and Awards <small>Scientific Achievement Awards (SAA)</small>		Plenary Session and Awards <small>Outstanding Doctoral Research Awards (ODRA)</small>	Plenary Session and Awards <small>IUFRO Student Awards for Excellence in Forest Science (ISA)</small>		
12.30–14.30	LUNCH	Poster Sessions, Exhibition and Lunch	Poster Sessions, Exhibition and Lunch		Poster Sessions, Exhibition and Lunch	Poster Sessions, Exhibition and Lunch	Closing Ceremony and Awards <small>(12.15–14.30)</small> Honorary Membership and Distinguished Service Awards (DSA)	
14.30–15.30		Tree Planting Ceremony <small>(14.30–16.00)</small>	Sub Plenary Sessions		Sub Plenary Sessions	Sub Plenary Sessions		
15.30–16.00		Networking, Exhibition and Coffee	Networking, Exhibition and Coffee		Networking, Exhibition and Coffee	Networking, Exhibition and Coffee		
16.00–18.00	Registration	Technical Sessions	Technical Sessions		Technical Sessions	Technical Sessions		
18.00		Administrative Meetings <small>(17.00–19.00)</small>	Technical Sessions		Technical Sessions	Technical Sessions	Technical Sessions	
18.00		Opening of the Exhibitions <small>(18.00–)</small>	Welcome Reception <small>(18.00–)</small>		Administrative Meetings <small>(18.00–20.00)</small>	Administrative Meetings of Divisions <small>(18.00–20.00)</small>		
19.00							Congress Outdoor Mingle <small>(19.00–)</small>	

Figure 1. IUFRO World Congress 2024 Week Overview

In total, 4,204 people attended the congress, including invited guests, honorary members, stakeholders from international organizations and the business sector, and political representatives. Delegates from 110 countries attended the congress. Most participants travelled from European and North American countries.

3.1 CONGRESS MAIN NUMBERS

The large scope of the congress is reflected in the numbers below.

Registered participants: 4,204

Countries: 110

Session organizers: 200

Sessions in the scientific programme: 437

Oral presentations: 1,607

Short oral by poster presentations: 1,471

Poster only presentations: 312

Pre- and post-excursions: 5

In-congress excursions: 15

Student volunteers: 82

Official partners: 34

Excursion partners: 82



3.2 PARTICIPANT PROFILE

Table 1 reports the number of registered delegates by category. IUFRO member from developed countries dominates. More than 700 students participated.

Table 1. Registered delegates	
Registered delegates per category	Number
IUFRO member, developed countries	1385
Non member, developed countries	769
IUFRO member Developing countries	402
Non member Developing countries	189
Students	743
Seniors	62
One-day	170
Accompanying person	58
Other	35
Non paying/invited delegates	
Speakers/Guests/IFSA	102
Exhibitors and partners	158
Press	49
Others	82
Total number of registered delegates:	4204

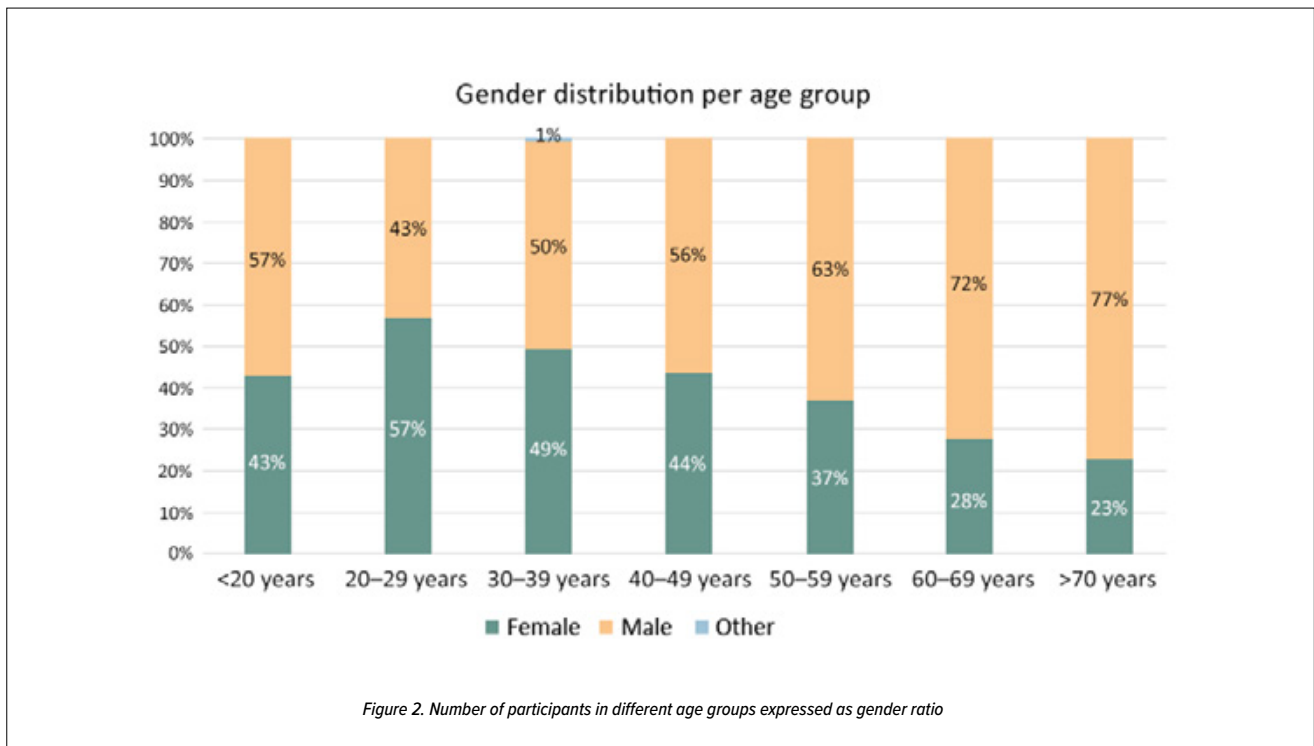


Of the 4,204 participants at the congress, 43% were women and 54% men. The number of participants for the different age groups by gender is shown in Table 2. The most representative age group was 30–39 with 1,157 participants, followed by 40–49 with 1,085 participants. In the age group 30–39, the distribution between women and men was 50%, whereas the age group 20–29 had the highest ratio of female participants, as shown in Figure 2.

Unspecified (N/A) in Table 2 refers to individuals who either received a one-day ticket or registered without needing to provide information about their age or gender, such as accompanying persons.

Table 2. The number of delegates in each age group and gender

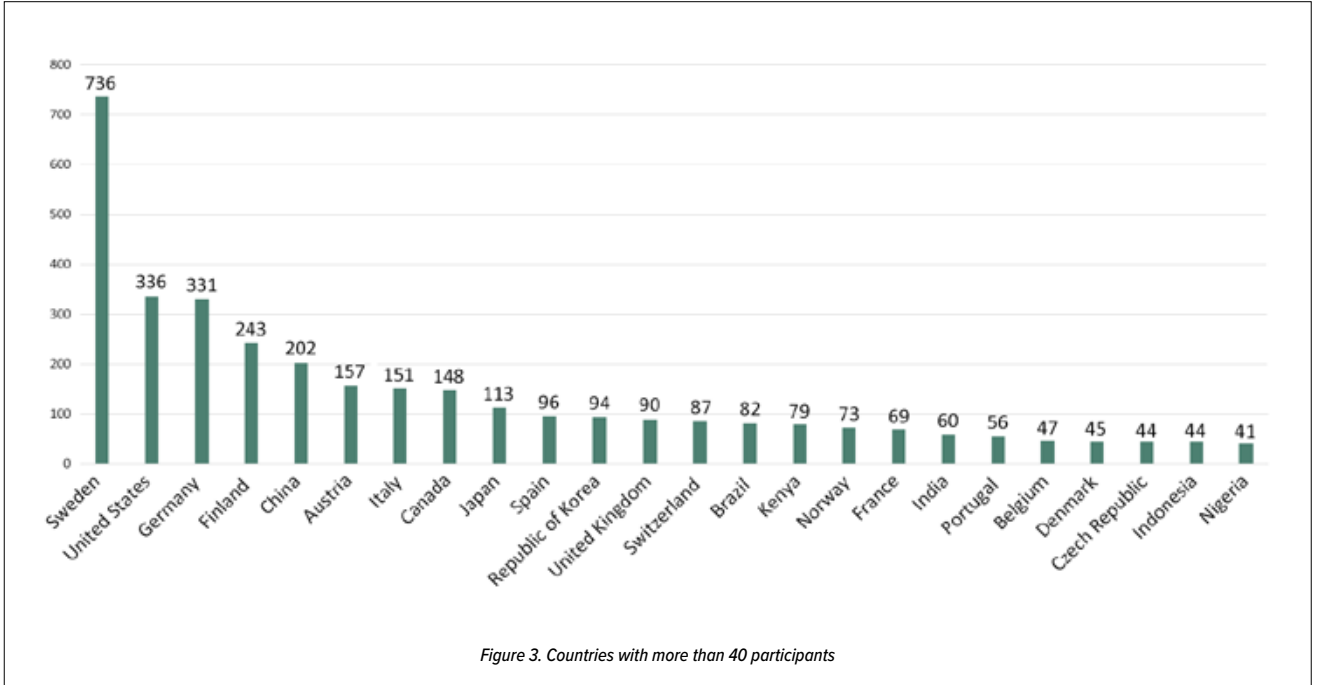
Age range	Female	Male	Other	Unspecified (N/A)	Total per age group or N/A
< 20 years	3	4			7
20–29 years	337	254	2		593
30–39 years	570	579	8		1157
40–49 years	473	609	3		1085
50–59 years	297	498			795
60–69 years	109	286	1		396
> 70 years	18	61			79
N/A	1			91	92
Total	1808	2291	14	91	4204



3.3 COUNTRIES

Delegates from 110 countries from all over the world attended the Congress. Figure 3 shows the countries with the largest number of participants. The majority of the participants came from Europe and North America, with Sweden being the country

with the largest number of delegates, followed by United States, Germany, Finland and China. From the Global South, China (202), Brazil (82), Kenya (79), India (60), Indonesia (44) and Nigeria (41) are among the countries with more than 40 participants.





The congress ceremonies serve as traditional ceremonial elements during the week with frequent awards ceremonies and opportunities for the host countries to present the culture of the region. The opening ceremonies are an opportunity for IUFRO and the host countries to set the scene for the congress week.

The closing ceremony provides an overview of the week, presents the congress statement and hands over the flag to the next congress host country. The 2024 IUFRO World Congress organized the following ceremonies: Tree Planting Ceremony, Opening of the Exhibitions, Opening Ceremony and Awards, and finally Closing Ceremony and Awards.

4.1 TREE PLANTING CEREMONY

The Tree Planting Ceremony served as the inaugural event of the IUFRO World Congress 2024. The ceremony is a longstanding tradition within IUFRO, representing resilience and the connection between generations and continents. It also allows the host country to present the regional culture and traditions related to forest and wood usage. The Tree Planting Ceremony was held on Sunday 23 June 2024 from 2:30 p.m. to 4:00 p.m. at the Skansen open-air museum in Stockholm.

The programme included a mingle, high-level speeches by the IUFRO President, the Chair of the Congress Organizing Committee, the Dean and students of the Swedish University of Agricultural Sciences, and representatives from the Royal Swedish Academy of Agriculture and Forestry and Skansen. The Allmänna Sängen academic choir performed throughout the programme. Two oaks were planted during the ceremony, representing resilience and the connection between generations and continents.

Invitations were extended to the congress delegates, media, high-level representatives from IUFRO, partner host countries and congress partners. Approximately 600 guests and delegates participated in the ceremony. The ceremony also included a traditional Midsummer celebration with dancing and entertainment, which offered participants a unique opportunity to experience a cherished Nordic tradition. Two pine trees were planted in the Entrance hall of Stockholmsmässan Exhibition & Congress Centre and after the

congress they were re-planted, for future generations to enjoy, together with the two oaks on the Orsakullen at the open air museum Skansen.





4.2 OPENING CEREMONY

The Opening Ceremony was held on Monday 24 June from 8:30 a.m. to 10:30 a.m. in the Victoria Hall of the Stockholmsmässan Exhibition & Congress Centre. Victoria Hall accommodated 2,000 guests and was fully seated. The event was also streamed to a parallel room.

The master of ceremonies led the programme, which included speeches by the Chair of the Congress Organizing Committee; the IUFRO President; His Majesty the King Carl XVI Gustaf of Sweden; the Swedish Minister for Rural Affairs; the Vice-Chancellor of the Swedish University of Agricultural Sciences (SLU); the Austrian Federal Minister for Agriculture, Forestry, Regions and Water Management; the President of the International Forestry Students' Association (IFSA); the Director-General of the Food and Agriculture Organization of the United Nations (FAO), and the Chief Executive Officer/Director-General of CIFOR-ICRAF.

The IUFRO flag was ceremonially raised by SLU students under the supervision of the chairs of the Congress Organizing and Scientific Committees. The Congress Organizing Committee was acknowledged for their work on stage. The Host Country Awards were handed over in a ceremony to three outstanding scientists from the Baltic and Nordic regions and Sweden. The winners were Professor Algirdas Augustaitis, Lithuania; Professor Liisa Tyrväinen, Finland; and Professor Jan Stenlid, Sweden. Swedish folk musicians and Swedish folk dancers performed throughout the programme. Last, members of the audience were given highlights for the congress week ahead.



4.3 CLOSING CEREMONY

The Closing Ceremony was held on Saturday 29 June from 12:15 p.m. to 2:00 p.m. in Victoria Hall of the Stockholmsmässan Exhibition & Congress Centre. The hall was not fully seated. The master of ceremonies led the programme, which included speeches by the Chair of the Congress Organizing Committee and the Secretary General of the Nordic Council of Ministers. Highlights from the congress were shown on the large screen.

The Stockholm Congress Statement was presented by the IUFRO President and the Chair of the Congress Scientific Committee. The IUFRO 2024 Secretariat as well as the Scientific Committee were then acknowledged and invited on stage. The Distinguished Service Award was given to Professor Mauro Agnoletti, Italy; Dr. Elisabeth Johann, Austria; Professor Dr. Max Krott, Germany; and Professor Gun Lidestav, Sweden. Prof. Michael Wingfield and Professor Björn Olof Hånell became IUFRO honorary members and hold honorary speeches. Thereafter, the new IUFRO board members were presented on stage. The new IUFRO President, Professor Daniela Kleinschmit, was welcomed to her new assignment and gave her speech.



During the flag ceremony, the flag was handed over to the new host country of IUFRO World Congress 2029, Kenya. The flag ceremony was attended by representatives of the Kenyan and Swedish government, as well as the outgoing and incoming chairs of the Congress Organizing Committee. The Kenyan Ambassador to Sweden and the incoming Kenyan Chair of the Congress Organizing Committee gave speeches and launched their Congress website. Finally, the Kenyan delegation was welcomed on stage and invited all attendees to Kenya for the 2029 congress. Live performances were held throughout the programme by the Swedish band ABBA the choir.

The IUFRO World Congress 2024 venue was Stockholmsmässan Exhibition & Congress Centre, Sweden's largest convention center. The venue was flexible and modern with the session rooms closely connected to the exhibition area. All services and facilities were on-site, including technical support.

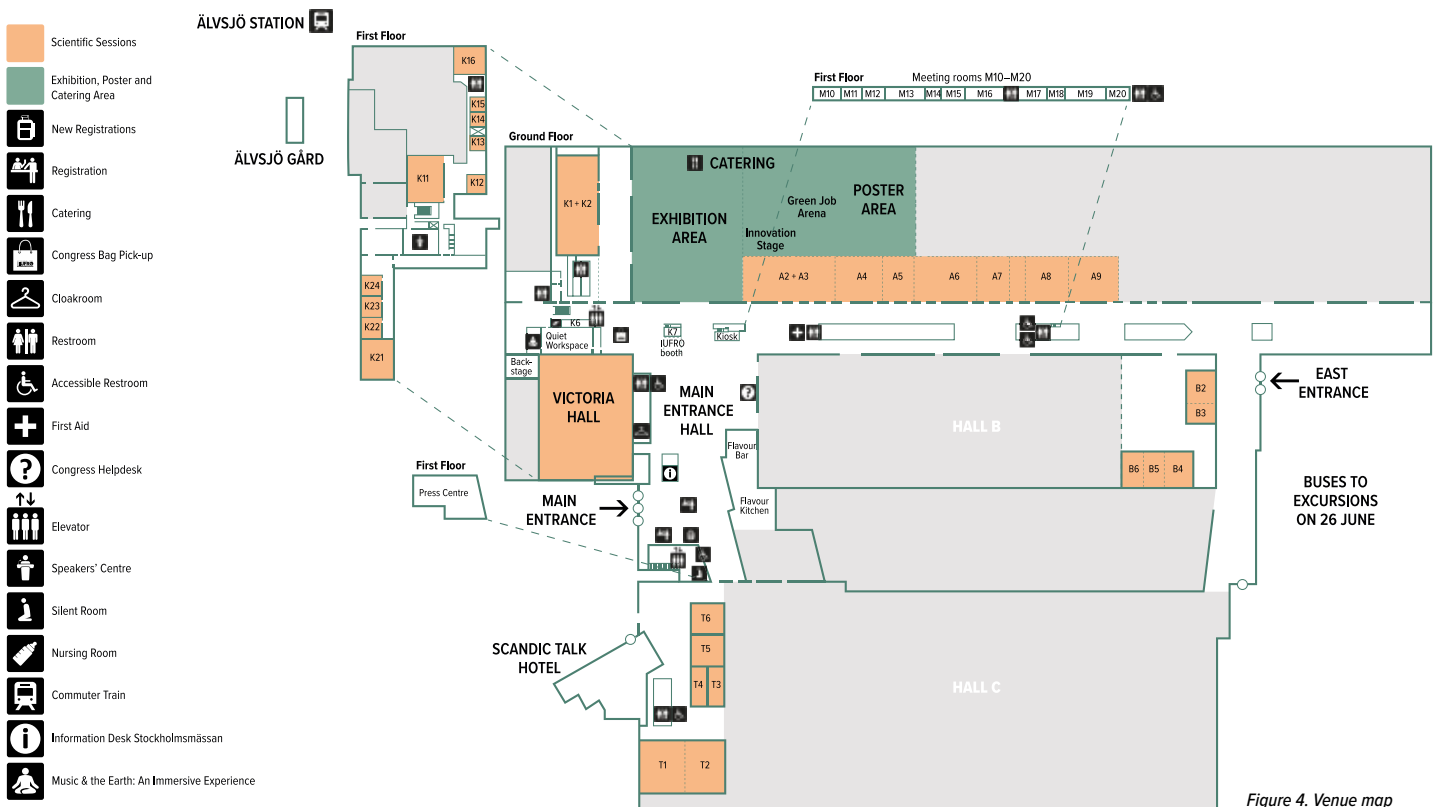


Figure 4. Venue map

5.1 ORGANIZATION

The heart of the congress was the main entrance hall and the exhibition area. Plenary sessions, as well as the opening and closing ceremonies, took place in Victoria Hall, which had a seating capacity of 2,000 and was accessible from the main entrance hall. The five sub-plenary sessions were held in rooms accommodating between 430 and 2,000 participants. The 28 technical session rooms varied in size, with capacities ranging from 45 to 850 seats per room.

The opening ceremony was also streamed to a room nearby with 850 seats. From the main entrance hall, it was easy to access the exhibition area, catering services, e-poster displays, the Innovation Stage and the Green Job Arena. Delegates were greeted in

the main entrance, where they could register at one of the 15 check-in counters, pick up their credentials and collect congress materials. The area also featured a congress helpdesk, which was staffed with a team ready to assist delegates with a wide range of inquiries.

The structure of the scientific events at the congress included a daily plenary session and sub-plenary sessions, including nine that focused on science and society. Technical sessions were held both in the mornings and the afternoon, except on the first and last days, resulting in a total of 191 simultaneous technical sessions. Each session room was equipped with a presentation laptop, a fixed podium microphone, preview monitors and slide advancers/presentation clickers. Technicians were on hand to assist with setup,

operation and troubleshooting throughout the event.

The IUFRO's booth was strategically located in the entrance hall, providing an excellent opportunity to share information about the organization's role in global forest research. The location also allowed for the distribution of printed materials, answering of questions and the exchange of ideas with numerous delegates.

5.2 TRANSPORT

Paying delegates received a seven-day commuter card for Stockholm public transport (metro, bus and commuter train). This was provided as a mobile ticket/voucher. Stockholmsmässan, located southwest of the city, was easy to reach by public transport, as it is just ten minutes by commuter train from Stockholm city centre. It was also possible to travel by commuter train all the way from Stockholm Arlanda Airport to Stockholmsmässan.

5.3 EXHIBITION

The official opening of the Exhibition was on Sunday 23 June at 6:00 p.m., where the IUFRO President and the Dean of Faculty of Forest Sciences at SLU participated in the ribbon cutting ceremony. The Congress Exhibition complemented the scientific programme under the title *From Science to Practice*. The floor plan for the exhibition was designed to create an open atmosphere, mixing the booths with networking areas to create an inviting space for delegates to mingle and network. The Innovation stage and the Green Job Arena held central positions in the exhibition.

During the Congress, the exhibition hall was open:

Monday 24 June: 9:00 a.m.–6:00 p.m.,

6:00 pm–7:45 p.m., welcome reception

Tuesday 25 June: 9:00 a.m.–6:00 p.m.

Wednesday 26 June: Closed due to excursions

Thursday 27 June: 9:00 a.m.–6:00 p.m.

Friday 28 June: 9:00 a.m.–6:00 p.m.

5.4 INNOVATION STAGE

The Innovation Stage at the IUFRO World Congress 2024 was a platform where invited guest speakers, including entrepreneurs, global companies, NGOs, researchers, and decision-makers, showcased the latest developments in their fields. The stage offered unparalleled exposure and the chance to connect with influential stakeholders. The focus was on forward-thinking solutions aligned with the theme Forest and Society Towards 2050, emphasising sustainability, climate action and innovation. The concept of the Innovation stage, connecting science with practice, was brand new for the IUFRO World Congress.

Each day, the Innovation Stage featured a specific theme to guide discussions and presentations, aligning with the overall focus of the congress week:

- Monday 24 June: *Forests for Sustainable Societies and Future Societies*
- Tuesday 25 June: *Strengthening Forest Resilience and Adaptation to Stress*
- Thursday 27 June: *Towards a Responsible Forest Bioeconomy*
- Friday 28 June: *Forest Biodiversity and its Ecosystem Services*

These themes provided a framework for addressing critical challenges and opportunities in forest management, products and services, focusing on innovative strategies for a more sustainable and resilient future. The presentations and dialogues at the Innovation stage were successful, serving as a suitable addition to the regular scientific programme. It was truly appreciated among delegates, partners and other stakeholders.



5.5 GREEN JOB ARENA

The Green Job Arena was a dynamic space where attendees could network and engage in discussions about the future of green forestry jobs. It focused on preparing the forestry workforce for upcoming challenges such as bioeconomy demands, climate change and biodiversity loss. The arena attracted experts, employers, employees, students and organizations who discussed various aspects of forest jobs, including talent needs, gender inclusion and sustainable practices. The concept of an arena that focuses exclusively on green jobs and skills supply was well received. The Green Job Arena was a new concept and has not previously been tested at the

IUFRO World Congress. The International Forestry Students' Association (IFSA) was actively present throughout the week in the Green Job Arena, staffing their own dedicated booth. As co-hosts, they helped maintain the arena and ensured it operated smoothly. Similar to their role at the Innovation Stage, they assisted in preparing and supporting guest speakers, and facilitating audience engagement by handling questions. Additionally, they organised networking events and opportunities specifically for students and delegates, playing a key role in bridging the gap between young professionals and established experts in the forestry sector.



The Congress title *Forests and Society Towards 2050* is rooted in the growing demands on forest ecosystem services due to the climate crisis and the need to reinforce the bioeconomy sector, the social services of healthy forests and forest resilience to disturbances and anthropogenic pressures.

The year 2050 is a landmark to achieve the vision of Living in Harmony with Nature as set out in the Convention on Biological Diversity, as well as the target of net zero emissions. With a focus on the contribution of forests to the UN 2030 Agenda and its Sustainable Development Goals (SDGs), the IUFRO World Congress in Stockholm 2024 invited scientists to present their findings in the following five themes.

THEME 1 (Tue): *Strengthening forest resilience and adaptation to stress*

THEME 2 (Thu): *Towards a responsible forest bioeconomy*

THEME 3 (Fri): *Forest biodiversity and its ecosystem services*

THEME 4 (Mon): *Forests for sustainable societies*

THEME 5 (Sat): *Forests for the future*

The scientific programme contained a total of 437 sessions, of which five were plenaries, 30 sub-plenaries, 191 technical and 211 poster sessions.



6.1 PLENARY SESSIONS

Each day during the congress week, except for the excursion day on Wednesday, one scientific and one stakeholder keynote speaker, gave their presentations in the plenary sessions, see Table 3. The presentations were given by ten keynote speakers from different parts of the world, of which seven were women and three men, representing the different themes.



Table 3. Keynote Speakers and Session Moderators

Date	Theme	Keynote speaker	Session moderator
Monday 24 June	Forests for sustainable societies	<p>Harini Nagendra Director and Professor, Research Centre and Centre for Climate Change and Sustainability, Azim Premji University, India</p> <p>Cécile Ndjebet Founder of the African Women's Network for Community Management of Forests</p>	<p>Monica Gabay Independent researcher, Argentina</p>
Tuesday 25 June	Strengthening forest resilience and adaptation to stress	<p>Andrew Liebhold Research Entomologist, IUFRO Officer, Northern Research Station, USDA Forest Service, Morgantown, WV, USA</p> <p>Juliette Biao Doctor of Philosophy, Director of the UNFF Secretariat</p>	<p>Purabi Bose Swedish University of Agricultural Sciences (SLU), Faculty of Forest Sciences</p>
Thursday 27 June	Towards a responsible forest bioeconomy	<p>Anne Toppinen Professor, Vice Dean of Research, Faculty of Agriculture and Forestry, University of Helsinki</p> <p>Martin Forsén Chairman of the Board SilviPar SA</p>	<p>Erich Schaitza Embrapa, Brazilian Agriculture Research Corporation</p>
Friday 28 June	Forest biodiversity and its ecosystem services	<p>Sally Aitken Professor in the Department of Forest and Conservation Sciences, Faculty of Forestry at the University of British Columbia, Canada</p> <p>Fran Raymond Price Global Forest Practice Leader, WWF International</p>	<p>Shirong Liu Chinese Academy of Forestry, National Forestry and Grassland Administration</p>
Saturday 29 June	Forests for the future	<p>Hans Joachim Schellnhuber Professor and Director General of the International Institute for Applied Systems Analysis (IIASA), Austria</p> <p>Isabelle Claire Dela Paz President of the International Forestry Students Association (IFSA)</p>	<p>Jens Peter Skovsgaard Swedish University of Agricultural Sciences (SLU), Southern Swedish Forest Research Center</p>

6.2 SCIENTIFIC SUB-PLenary SESSIONS

The Congress Scientific Committee (CSC) made 31 slots available for sub-plenary sessions. Twenty two of the slots were scientific sessions and nine were science to society dialogue sessions, see Table 4. Some of the scientific sub-plenary sessions were given more than one time slot, since they received a large number of abstracts.

6.3 SCIENCE AND SOCIETY SUB-PLenary SESSIONS

In addition to the scientific sub-plenary sessions, the congress provided nine science and society sub-

plenary sessions, each offering the opportunity for essential dialogue in forest research and sustainability. The sessions featured keynote presentations and expert panel dialogues between scientists, business leaders and other stakeholders, while exploring the critical role of forests and forest science for a sustainable society, see Table 5. The sessions provided delegates with innovative strategies, interdisciplinary insights and practical tools to navigate the future of forest research and sustainable resilient societal development towards 2050.

Table 4. 31 Sub-plenary sessions – 17 Scientific sessions (abstracts) and 9 Science and Society sessions

Date	Number of sessions
Monday 24 June	5 Sub-plenary sessions (3 scientific + 2 science/society)
Tuesday 25 June	5 Sub-plenary sessions (3 scientific + 2 science/society)
Thursday 27 June	7 Sub-plenary sessions (6 scientific + 1 science/society)
Friday 28 June	9 Sub-plenary sessions (7 scientific + 2 science/society)
Saturday 29 June	5 Sub-plenary sessions (3 scientific + 2 science/society)

Table 5. Science and Society Sub-plenary Sessions

Theme	Title	Number of sessions
1. Strengthening forest resilience and adaptation to stress	President's Discussion "Translating scientific research into effective forest management to meet multiple societal objectives: challenges and opportunities"	1
2. Towards a responsible forest bioeconomy	Scaling up the Exchange Between Forest Science and Business	1
3. Forest biodiversity and its ecosystem services		0
4. Forests for sustainable societies	International Forest Governance: A Comprehensive Global Review Forest Governance in Regions – A Stakeholder Dialogue Ministerial panel – Decisive Roles of Forests Towards 2050	3
5. Forests for the future	Forest Futures Compelling Communication – Reshaping the Sustainable Wood Narrative Leadership for Sustainability – Overcoming Challenges in Forest Research Power of Youth in Scaling Multisectoral Collaboration: The role of forests in achieving the vision for 2050	4
Total number of sessions		9

6.4 TECHNICAL SESSIONS

Technical sessions were held in the mornings and in the afternoons, except on excursion day, opening day and closing day, resulting in a total of 191 simultaneous technical sessions evenly distributed across themes.

6.5 E-POSTER SESSIONS

E-poster sessions, with short oral presentations, were held every day during lunch. Since multiple presentations were presented simultaneously in an open floor area, the audio was live streamed online as a Silent meeting. A total of 1,471 short oral poster presentations were given in the e-poster area, which included 30 e-poster screens.

The abstracts accepted as poster were available in the Congress app throughout the congress.

6.6 PARTNER SIDE EVENTS

In total, seven side events were organized by partners during lunchtime, including notable co-hosted events based on collaborations (e.g. IKEA, the Swedish Forest Agency and World Forest ID) and side events co-hosted by the arena Public Sweden. These events typically lasted one hour each and were held in rooms with a capacity of up to 200 seats. The side events were well-attended and received positive feedback from participants, serving as an appreciated addition to the regular scientific programme.

Table 6. Technical sessions by theme

Date	THEME 1: Strengthening forest resilience and adaptation to stress	THEME 2: Towards a responsible forest bioeconomy	THEME 3: Forest biodiversity and its ecosystem services	THEME 4: Forests for sustainable societies	THEME 5: Forests for the future	
Monday 24 June	6	5	5	5	7	
Tuesday 25 June	14	10	10	11	11	
Thursday 27 June	12	9	10	11	9	
Friday 28 June	15	8	11	9	13	
Total	47	32	36	36	40	191

Table 7. Partner side events

Side event title	Organization
Five Public Sweden Perspectives: The Role of Forests for Society – Beyond Wood and Carbon	Co-hosted side event by Formas, Sida, the Swedish Forest Agency, the Swedish Energy Agency and the Swedish Agency for Marine and Water Management
“Sow a Seed” – 25 years of IKEA-funded rainforest restoration in Borneo: Lessons learned and the future	IKEA
Using forensic methods, AI and ‘origin science’ to improve traceability and increase the integrity of forest supply chains	Swedish Forest Agency, Co-hosted side event with IKEA and World Forest ID
22 years of learning from a WWF and IKEA long-term partnership and collaboration for forests, biodiversity and people	WWF – World Wide Fund for Nature
Towards more biodiverse forests – Scientific knowledge steers biodiversity actions for the Finnish wood processing industry	Finnish Forest Industries Federation
A Forest Future for All: Sustainable Management of Forest Ecosystems in Central Africa	CIFOR-ICRAF
“The Friendly Forest 2050” – Towards a new emphasis on social values and recreational needs in forests for the common good	The Swedish Association of Outdoor Organizations

IUFRO traditionally holds a series of working meetings the week before and during each IUFRO World Congress. The Management Committee and the Enlarged Board meetings were held the week before the congress, which were followed by administrative meetings, a Director's Forum meeting and the International Council meeting during the congress week.

7.1 IUFRO ADMINISTRATIVE AND DIVISIONS

The IUFRO World Congress 2024 offered an opportunity for IUFRO divisions, research groups, working parties and task forces to meet and discuss administrative and strategic matters during the congress week, and was well utilized.

7.2 IUFRO INTERNATIONAL COUNCIL

The IUFRO International Council (IC) met in the afternoon of 27 June during the World Congress in Stockholm. Thirty-seven countries were represented at the meeting. The meeting included the approval of draft minutes of the previous IC meeting held on 2 October 2019 in Curitiba, Brazil, as well as approval of reports by the President, Vice Presidents and Executive Director. The IC members were then given presentations of the new IC Chair, Vice Chairs and members of the IUFRO Board. The Stockholm Congress Statement 2024 was approved. A review and discussion of future policy and the IUFRO post-2024 Strategy Action Plan took place before viewing a video and presentation of the venue of the IUFRO World Congress 2029. The final item on the agenda concerned honorary membership, where there was a vote on two incoming nominations received by the Honours and Awards Committee.

7.3 MANAGEMENT COMMITTEE AND IUFRO ENLARGED BOARD



The IUFRO Management Committee held its meeting prior to the congress on Tuesday 18 June at the campus of the Swedish University of Agricultural Sciences in Uppsala, Sweden.

The IUFRO Enlarged Board held its meeting back-to-back with the Management Committee meeting on Wednesday and Thursday 19–20 June. The board is comprised of members of the Management Committee and the coordinators and deputy coordinators of IUFRO's nine divisions. The majority of the members participated in person, and a handful participated online. On the evening of 19 June, the Swedish University of Agricultural Sciences hosted the board members dinner in central Uppsala, on the historical grounds of the beautiful Linneaus Garden, dating back to the 17th century.



Table 8. IUFRO administrative and divisions meetings for research groups, working parties, task forces and IUFRO divisions

Group	Date	Time
WP 1.01.12 Silviculture and ungulates	Sunday 23 June	17.00–18.50
WP 9.01.02 Communication and public relations	Sunday 23 June	17.00–17.50
WP 8.01.02 Landscape ecology	Sunday 23 June	17.00–18.50
RG 9.04.00 Forest resource economics	Sunday 23 June	17.00–18.50
WP 1.01.13 Ecology and silviculture of chestnut	Sunday 23 June	17.00–18.50
(joint meeting) Task Force Gender equality in forestry & RG 6.08.00 Gender and forestry	Sunday 23 June	17.00–18.50
WP 8.02.08 African wildlife conservation and management (AWCM)	Sunday 23 June	17.00–17.50
WP 9.03.02 Forest culture	Tuesday 25 June	18.00–18.50
WP 1.02.04 Sustainable management and genetic resources in Meliaceae	Tuesday 25 June	18.00–18.50
WP 4.02.01 Resource data in the tropics	Tuesday 25 June	19.00–19.50
WP 8.02.01 Key factors and ecological functions for forest biodiversity	Tuesday 25 June	18.00–18.50
WP 4.01.04 Effects of environmental changes on forest growth	Tuesday 25 June	18.00–18.50
RG 4.01.00 Forest mensuration and modelling	Tuesday 25 June	19.00–19.50
WP 8.04.07 Radioactive contamination of forest ecosystems	Tuesday 25 June	18.00–19.50
WP 9.01.06 Forest science publishing	Tuesday 25 June	18.00–19.50
Task Force Forest and Water	Tuesday 25 June	18.00–19.50
WP 7.02.03 Vascular wilt diseases	Tuesday 25 June	18.00–18.50
WP 9.05.04 Forest policies in the Baltic and CEE regions	Tuesday 25 June	18.00–18.50
WP 9.03.04 Traditional forest knowledge	Tuesday 25 June	18.00–18.50
WP 2.04.01 Population, ecological and conservation genetics	Tuesday 25 June	18.00–18.50
WP 4.03.03 Information management and information technologies	Tuesday 25 June	18.00–18.50
WP 1.01.08 Ecology and silviculture of spruce	Tuesday 25 June	18.00–18.50
WP 9.01.03 Extension and knowledge exchange	Tuesday 25 June	18.00–18.50
RG 1.04.00 Agroforestry	Tuesday 25 June	18.00–18.50
RG 1.08.00 Silviculture for edible non-wood forest products	Tuesday 25 June	18.00–18.50
RG 5.11.00 Non-wood forest products	Tuesday 25 June	18.00–18.50
RG 5.10.00 Forest products marketing and business management	Tuesday 25 June	18.00–18.50
RG 4.05.00 Managerial economics and accounting	Tuesday 25 June	18.00–18.50
RG 6.01.00 Forest recreation	Tuesday 25 June	18.00–18.50
RG 9.02.00 Forest sector analysis	Tuesday 25 June	18.00–18.50
Task Force Joint IFSA-IUFRO TF on Forest Education	Tuesday 25 June	18.00–18.50
Task Force Precision Pest Management (PPM) in Forest Ecosystems	Tuesday 25 June	18.00–18.50
Task Force Transforming Forest Landscapes for Future Climates and Human Well-Being	Tuesday 25 June	18.00–18.50
WP 1.01.01 Boreal forest silviculture and management	Tuesday 25 June	18.00–18.50
Division 1 – Silviculture	Thursday 27 June	18.00–20.00
Division 2 – Physiology and Genetics	Thursday 27 June	18.00–20.00
Division 3 – Forest Operations Engineering and Management	Thursday 27 June	18.00–20.00
Division 4 – Forest Assessment, Modelling and Management	Thursday 27 June	18.00–20.00
Division 5 – Forest Products	Thursday 27 June	18.00–20.00
Division 6 – Social Aspects of Forests and Forestry	Thursday 27 June	18.00–20.00
Division 7 – Forest Health	Thursday 27 June	18.00–20.00
Division 8 – Forest Environment	Thursday 27 June	18.00–20.00
Division 9 – Forest Policy and Economics	Thursday 27 June	18.00–20.00

The excursions were organised through the Congress Organising Committee, with excursion coordinators and host organisations in each host country. Researchers from the Nordic and Baltic host organisations managed the programme in collaboration with two travel agencies – Nordic Ways, Sweden and Impro Travel, Latvia. The tours offered a mix of scenic landscapes, culture, industry and modern forest science.

8.1 PRE- AND POST CONGRESS EXCURSIONS

The following Pre-congress tours were carried out:

In the heart of the boreal – Nature, art and Midsummer eve. Sweden–Finland, 17–22 June

Starting in Helsinki and finishing in Stockholm, the tour visited Hyytiälä research station and peatlands, the Swedish University of Agricultural Sciences in Umeå and Svartberget research station, which performs terrestrial and limnological field research. The two research stations are both members of the Integrated Carbon Observation System (ICOS). Between the scientific visits, activities such as canoeing and hiking were offered.

The glaciers of Iceland. Iceland, 16–22 June

The tour began in Reykjavík and travelled along the south coast. Several stops were made at scenic attractions along the way, such as the famous Eyjafjallajökull volcano, the Seljalandsfoss and Skógafoss waterfalls, the black beach at Vík and Skaftafell National Park. During the excursion, the participants learned about the history of deforestation and afforestation in Iceland, production of geothermal energy and the work of the Icelandic Forest Service.





The following Post-congress tours were carried out:

Under the midnight sun. Sweden-Finland, 29 June–4 July

This trip started with a flight north of the Arctic Circle, where the participants experienced the Sami culture, enjoyed beautiful landscapes and engaged in activities, e.g. visiting the Ice Hotel and discovering the Abisko Scientific Research Station, under the midnight sun. During the tour, the participants visited the Abisko Scientific Research Station, Finnish Global Atmosphere Watch in Pallas and the Arktikum science center.



Voyage to the fiords. Sweden–Norway, 29 June–4 July

This tour started in Stockholm and ended in Oslo. In Sweden, the tour stopped in Arboga and Karlstad with forests excursions in Färna Ecopark and guided tours at Hjälmare canal and Arboga old town. After crossing the border to Norway, the agenda included a visit to Yre Hvaler National Park, Fredriksten Fortress, Borregaard biorefinery, Midgard Viking center and Splitkon – a production facility for large format cross laminated timber panels. The trip went along the Oslo Fjord and continued to Oslo, where a range of museums and cultural institutions awaited.



The Baltic countries – Green jewels of Europe. Estonia, Latvia and Lithuania, 29 June–5 July

The Baltic post-congress tour was a broad mix of culture and science, where the participants enjoyed the Baltic capitals and remote seaside villages, as well as forest highlights, e.g. the Forest museum and experimental station in Estonia, and several research and industry sites in Latvia and Lithuania, including Järvselja experimental station and Latvijas Finieris, showing birch products for sustainable architecture, construction and design.

8.2 IN-CONGRESS EXCURSIONS

On Wednesday 26 June, 15 excursions were carried out with varying themes covering IUFRO's areas of activities. All excursions took place within a two-hour journey from the Stockholm event area. During the day, participants learned about forest management methods, nature protection, forest damage, game management, park management and social values, land and water research, bioenergy, climate issues, forest policy and economy, digitalization and innovation, and new materials from the forest.

The much appreciated excursions were the result of a successful and close Nordic collaboration between research and authorities, business and non-profit organizations. A total of approximately 50 different organizations participated in the planning and implementation of the excursions.



Table 9. In-Congress Excursions

No	Excursion title	Host/Excursion leader	Participants
1	Fire dynamics and disturbances in past and present forest landscapes	Tyresta Forest Foundation and Uppsala University	195
2	Joint efforts to take forest management into the future	Swedish University of Agricultural Sciences (SLU) and Linneaus University	270
3	Pathology, mycology, ecology and conservation	SLU	238
4	Valuable trees and forests close to people	Royal Djurgården Administration and SLU	271
5	Environmental monitoring and field-based research infrastructure	SLU and SITES (Swedish Infrastructure for Ecosystem Science)	180
6	Production systems for forest fuels and bioenergy generation	SLU and StoraEnso	173
7	Forest-industry integration and logistics	SLU and Sveaskog	224
8	State-of-the-art forestry over a rotation period	Forestry Research Inst. of Sweden and Skogssällskapet	300
9	People, forest and climate change	SLU Future forest	273
10	Conservation and forestry in practice	The Royal Swedish Academy of Agriculture and Forestry	373
11	Co-management of deer and forests in a multispecies setting	SLU and Swedish Hunters Association	116
12	Forest as a Park at the Royal Parks of Stockholm	Swedish Royal Court	117
13	New innovative materials from the forest – the research forefront	Royal Institute of Technology and Wallenberg Wood Science Center	64
14	Digitalisation for sustainable forest management	SLU and MISTRA digital forest	182
15	New technologies and innovations in forestry	Linneaus University and National Museum of Science and Technology	275
		Total	3251



The following In-congress tours were carried out:

1. Fire dynamics and disturbances in past and present forest landscapes

The excursion took place in Tyresta National Park south of Stockholm, a large old-growth forest that was affected by wildfires in 1999. The participants were guided through the history of natural and anthropogenic disturbances in Sweden, the role of fire in forest conservation and challenges for forestry, conservation and recreation in a future fire regime. SLU Forest and Health also invited guests to participate in forest bathing, examining how resting in the forest can affect your health and mood.

2. Joint efforts to take forest management into the future

During the excursion located at Krusenberg outside Uppsala, six areas of interest included in the research programme Future forest management (FRAS) in southern Sweden were presented and discussed: Mixed forest management, Regeneration systems, Forest damage, Management for high production, Management for multiple ecosystem services and Digital tools.

3. Pathology, mycology, ecology and conservation

On this excursion at Krusenberg, clear-cut and continuous forestry management were discussed along with breeding and economic aspects. The participants

also observed many traces of forest damage from fungi that causes spruce root rot, ash dieback and Dutch Elm disease, as well as damage from bark beetle attack.

4. Valuable trees and forests close to people

During the excursion at Djurgården Royal National City Park, management principles and research findings were demonstrated within five areas: urban forestry and ecosystem services, closer-to-nature forest management, nature conservation in mixed forest, forest history and recreational values in forests close to people.

5. Environmental monitoring and field-based research infrastructure

During this excursion, hosted by the Swedish infrastructure for Ecosystem Sciences (SITES), participants were presented with long-term effects of climate change on water quality, biodiversity and ecosystem services in aquatic ecosystems, as well as soil conditions and soil chemistry from around 20,000 plots across Sweden. The monitoring of biophysical conditions and changes in deciduous forests were also covered.

6. Production systems for forest fuels and bioenergy generation

Current technology and systems used in Nordic countries were presented by tracing a forest fuel logistics chain from the time of harvest at the final felling. The excursion demonstrated current best practice in the harvest of logging residues and field-adapted storage strategies.

7. Forest-industry integration and logistics

Close to the city of Eskilstuna, the participants gained insights into Swedish best practice forest operations and were introduced to advanced technology for planning, logging, transportation and forest industry production, including low impact and efficient machine concepts, big data, new fuels, automation and remote sensing.

8. State-of-the-art forestry over a rotation period

At Bredvik in northern Uppland, the participants were shown how different aspects of forest management can be combined. During the excursion, topics such as forest regeneration, silviculture, forest operations, soil and water protection, forestry value chains,



biodiversity and nature conservation, forest history and culture remnants, and public access and stakeholder engagement were covered.

9. People, forest and climate change

At Gålö, south of Stockholm, the excursion explored the relationships between forests and society in the context of climate change. The participants gained insight on how forest and climate knowledge is understood and interpreted by local actors in Sweden, including forest owners, tourism representatives, reindeer herders, hunters, forestry companies and environmental organisations.

10. Conservation and forestry in practice

During this excursion at Barksätter estate close to the city of Katrineholm, several issues crucial for the long-term health of forests and society were discussed, such as forest biodiversity, sustainable forestry and wildlife management, and spruce bark beetle damage.

11. Co-management of deer and forests in a multi-species setting

The excursion at the Öster Malma estate in county Södermanland was hosted by the Swedish Association for Hunting and Wildlife Management. The excursion focused on drivers of browsing pressures, mitigation measures and approaches to co-manage deer and forests in boreal production landscapes under climate change.

12. Forest as a park at the Royal Parks of Stockholm

In this excursion, the two royal parks Haga and Drottningholm were visited. The themes discussed were the biological diversity of the older park trees; potential conflicts between the preservation of old trees, historical aspects and the safety of the public; design influences from English parks; the value of the parks for recreation and outdoor life; and the future development of the parks.

13. New innovative materials from the forest – the research forefront

This excursion showed examples of the research carried out at the Wallenberg Wood Science Center at the Royal Institute of Technology (KTH) in Stockholm. The excursion included presentations and visits to laboratories and discussion on topics such as Sweden's value creation from the forest, research on new materials from wood and examples of start-up projects.



14. Digitalisation for sustainable forest management

In this excursion, the participants visited the Swedish state forest company Sveaskog where they gained insight into current forest management practices and innovative digital services. During the field visit, participants were introduced to Swedish state-of-the-art inventory and mapping, new methods and remote sensing techniques to assess forest damage, and biodiversity as well as conservation values.

15. New technologies and innovations in forestry

At the National Museum of Science and Technology, the participants took part in lectures and exhibitions about new technologies and innovations in forestry, such as new methods for direct measurement in the forest, remote sensing and Artificial Intelligence. A poster exhibition with a focus on sustainability and a lecture on the advantages of building in wood were also offered.

At the congress, social events are crucial to make delegates from all over the world feel welcome. These social events, including networking and mingling opportunities, set the atmosphere for the congress and showcase the traditions and customs of the host country.

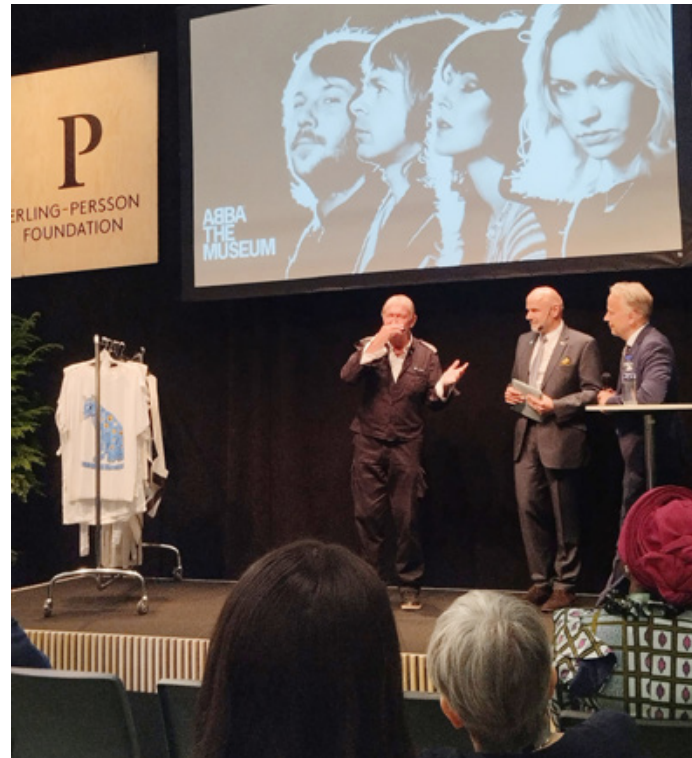


9.1 OPENING OF THE EXHIBITION

The opening of the exhibition took place on Sunday 23 June from 6:00 p.m. to 6:30 p.m. in the exhibition hall at Stockholmsmässan. The IUFRO President and the Dean of the SLU Faculty of Forest Sciences opened the exhibition in a ribbon cutting ceremony and gave short speeches, accompanied by the chair of the Congress Organizing Committee.

9.2 WELCOME RECEPTIONS

The Congress Organizing Committee welcomed delegates to two different receptions during the evening of Monday 24 June – one at Stockholm City Hall and one at the congress venue. At Stockholm City Hall, the IUFRO President and the Stockholm City Council welcomed 1,200 delegates, followed by a guided tour through the Nobel Prize Banquet premises and a buffet dinner. At the venue at Stockholmsmässan, the IUFRO Executive Director and the Dean of SLU Faculty of Forest Sciences welcomed 3,000 delegates, followed by mingle with a light meal. The designer of ABBA's stage clothes, Mr. Owe Sandström, gave a captivating lecture about the inspiration from nature, NextGen and shared memories.



9.3 PRESIDENT'S DINNER

The traditional and ceremonial IUFRO President's Dinner took place on Wednesday 25 June from 7:00 p.m. to 10:00 p.m. at Älvsjö Manor, a historical manor house from the 17th century adjacent to Stockholmsmässan. Seventy invited international guests, including past IUFRO Presidents, mingled and listened to speeches by the current IUFRO President and the Chair of COC. Attendees were invited to a buffet dinner in the garden of the manor house afterwards.

9.4 OUTDOOR MINGLE

The outdoor mingle was arranged for the delegates on the evening of Friday 28 June at the Evenew Arena in central Stockholm. Delegates arrived to an open, outdoor arena where a large tent was erected. In the tent, delegates were treated to a show by Rockford Big Band, who played classic big band jazz, soul, funk music and modern covers. Participants enjoyed a buffet dinner, followed by a spectacular light and sound show until late in the evening. Delegates from all over the world danced the night away and created a wonderful, pleasant atmosphere.



10

CONGRESS PARTNERS

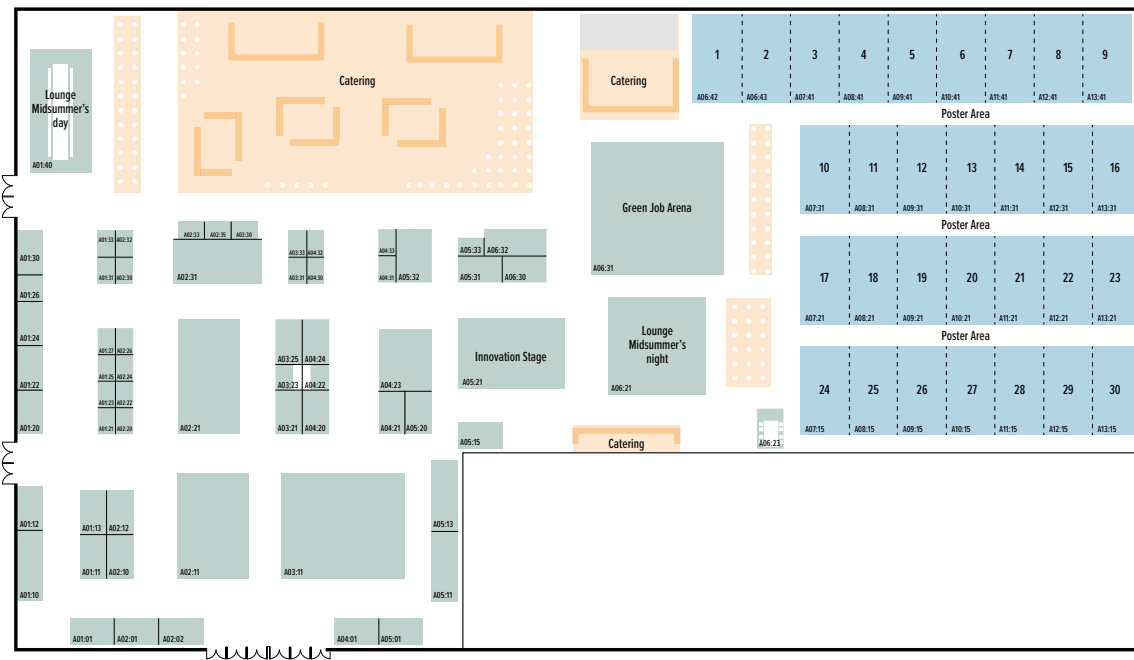
The exhibition hall was one of many highlights for the partners and delegates who participated in the IUFRO World Congress 2024. The exhibition was well attended, and the dedicated lounge areas in the exhibition were buzzing with delegates throughout the week.

10.1 EXHIBITORS

The exhibition took place in the same venue as the congress, Stockholmsmässan, with a total area of 7,500 m². In addition to the exhibition booths, the hall featured a poster session area, a technical help desk, seven catering stations, two Swedish Midsummer themed social spaces for work and relaxation and two new highlights: the Green Job Arena and the Innovation Stage, both introduced for the first time at the IUFRO World Congress exhibition.



Photo: Rebecca Eurrén, Matilda Haglund, Julia Ståhlert



Booth	Exhibitor
A01-26	Agroforestry Network
A04-23	AirForcity
A02-12	Arco
A04-24	Asian Forest Cooperation Organization (AFCO)
A05-10	Association of University Forestry Schools of Canada, Canada (shared)
A02-20	Australian Forest and Wood Innovations (AFWI)
A05-21	Balium Development Group/Balium
A05-10	Canadian Forest Service, Natural Resources Canada, Canada (shared)
A05-20	Chinese Academy of Forestry (CAF)
A04-21	CFOR ICRAF
A05-13	Conservation International
A05-13	EcoPlanet Bamboo
A05-20	Esaver Ltd
A05-21	Europe Forest Foundation (Patron of the Innovation Stage)
A02-23	Fachagentur Nachhaltige Rohstoffe e.V. (FNR)
A05-20	Forest Stewardship Council (FSC)
A02-21	Formas, Public Sweden (shared)
A04-01	General Laser GmbH, Umweltata GmbH (shared)
A02-01	GIS
A05-15	Haglöf Sweden AB
A05-21	ICI International Ply Ltd
A02-35	IGA Technology Services
A05-01	International Bamboo and Rattan Organization (INBAR)
A05-21	International Forestry Students' Association (IFSA) (shared)
A03-30	International Institute for Applied Systems Analysis (IIASA)
A05-21	International Tropical Timber Organization (ITTO)
A05-11	IUFRO SPOC
A02-21	Kenya Forestry Research Institute
A02-31	KSLA
A04-33	KSLA
A02-22	Larven State Forest Research Institute "Silva"
A04-22	LI-COR Environmental
A02-31	Limnux University
A02-35	Logosun AB
A02-26	MCPH - Academic Open Access Publishing since 1996
A04-31	Michigan State University Department of Forestry
A04-31	Northeast Forestry University (NEFU), Journal of Forestry Research
A01-12	Oregon State University College of Forestry
A05-21	Oxford University Press (OUP)
A02-21	Perstorp Publishers Ltd.
A04-30	Pineasa Forestry
A05-11	Perseus Pte
A02-25	RECOFFIC
A05-13	Rica Andelin Pulp & Paper, APRIL
A01-01	Scientific and Academic College of the Congo Basin Forest Partnership, University of Laï, Faculty of Forestry, Geography and Geomatics
A02-21	Sida, Public Sweden (shared)
A01-24	Silvaco
A05-30	SLU, EU Soil Health Living Lab: support by NATIONS & PREPSOL
A05-11	SNS (Nordic Forest Research)
A02-25	Spatiger Netze
A02-24	Svenska Egenomsövningsanslagens Forening, Prästationslagarna i Skandinavien
A02-21	Svenska Egenomsövningsanslagens Forening, Prästationslagarna i Skandinavien
A02-21	Svenska Egenomsövningsanslagens Forening, Prästationslagarna i Skandinavien
A02-21	Svenska Egenomsövningsanslagens Forening, Prästationslagarna i Skandinavien
A05-12	Svenska Egenomsövningsanslagens Forening, Prästationslagarna i Skandinavien
A02-11	Svenska Egenomsövningsanslagens Forening, Prästationslagarna i Skandinavien
A04-20	UBC Faculty of Forestry
A04-01	Umeåskolan Skellefteå
A02-10	United Nations Convention to Combat Desertification (UNCCD), UNCCD/20 Global Land Initiative
A03-33	University of Copenhagen
A04-32	University of Helsinki
A02-30	Yonsei University (YU)
A01-22	World Vision Korea, Sustainable Environment and Economy against Drought and Degradation in TSDA
A02-02	World Wood Day Foundation (WWDF)
A06-12	WWF
A02-25	Wiss Academy for Nature, RECOFFIC (shared)

Figure 5. Exhibition, poster and catering area – IUFRO World Congress 2024

A total of 68 exhibitors (Figure 5 and Table 10) participated in the IUFRO World Congress 2024, representing a wide range of sectors and demonstrating significant global diversity. Of these, 25 exhibitors were from Nordic or Baltic countries (37%), 20 from other European countries (29%) and 23 from countries outside Europe (34%).



Table 10. List of exhibitors at the IUFRO World Congress 2024

Booth	Organization	Type of organization	Country (HQ)
A04:23	AirForestry	Companies and business	Sweden
A02:20	Australian Forest and Wood Innovations (AFWI)	Government research institutes	Australia
A04:24	Asian Forest Cooperation Organization (AFoCO)	Intergovernmental organization (IGO)	Korea
A01:26	Agroforestry Network	Network	Sweden
A02:12	Arevo	Companies and business	Sweden
A01:10	Association of University Forestry Schools of Canada, Canada (shared)	Academic association	Canada
A01:31	Berkem Development, Groupe Berkem	Companies and business	France
A01:10	Canadian Forest Service, Natural Resources Canada, Canada (shared)	Government agency	Canada
A05:33	Conservation International	NGO	U.S.A
A05:20	Chinese Academy of Forestry (CAF)	Government research institutes	China
A04:21	CIFOR-ICRAF	NGO	Kenya
A01:25	International Council for Game and Wildlife Conservation (CIC)	NGO	Hungary
A05:13	EcoPlanet Bamboo	Companies and business	Kenya
A01:20	Elsevier Ltd	Companies and business	Netherlands
A05:21	Erling-Persson Foundation (Patron of the Innovation Stage)	Foundation	Sweden
A06:30	Forest Stewardship Council® (FSC®)	NGO	Germany
A02:21	Formas, Public Sweden (shared)	Government agency	Sweden
A01:23	Fachagentur Nachwachsende Rohstoffe e.V. (FNR)	Research institute	Germany
A04:01	General Laser GmbH, Umweltdata GmbH (shared)	Companies and business	Austria
A02:01	Global Landscape Forum (GLF)	Network	Germany
A05:15	Haglöf Sweden AB	Companies and business	Sweden
A01:27	ICT International Pty Ltd	Companies and business	Australia
A05:31	International Tropical Timber Organization (ITTO)	Intergovernmental organization (IGO)	Japan
A06:31	International Forestry Students' Association (IFSA)	Student network	Germany
A03:30	International Institute for Applied Systems Analysis (IIASA)	Research institute	Austria
A05:01	International Bamboo and Rattan Organization (INBAR)	Intergovernmental organization (IGO)	China
EH:01	IUFRO (in the entrance hall)	International research network	Austria
A05:11	IUFRO-SPDC	International research network	Austria
A02:35	IGA Technology Services	Companies and business	Italy
A03:21	Kenya Forestry Research Institute	Research institute	Kenya
A03:31	KKL-JNF	NGO	Israel
A04:33	Royal Swedish Academy of Agriculture and Forestry (KSLA)	Academic society	Sweden
A02:22	Latvian State Forest Research Institute "Silava"	Universities and educational institutions	Latvia
A02:31	Linnaeus University	Universities and educational institutions	Sweden
A04:22	LI-COR Environmental	Companies and business	U.S.A
A02:33	Logscom AB	Companies and business	Sweden
A02:26	MDPI – Academic Open Access Publishing since 1996	Companies and business	Switzerland
A02:32	Michigan State University Department of Forestry	Universities and educational institutions	U.S.A
A04:31	Northeast Forestry University (NEFU), Journal of Forestry Research	Universities and educational institutions	China
A01:12	Oregon State University College of Forestry	Universities and educational institutions	U.S.A

cont. Table 10. List of exhibitors at the IUFRO World Congress 2024

Booth	Organization	Type of organization	Country (HQ)
A01:33	Oxford University Press (OUP)	Companies and business	UK
A01:21	Pensoft Publishers Ltd.	Companies and business	Bulgaria
A04:30	Plantma Forestry	Companies and business	Sweden
A01:11	Ponsse Plc	Companies and business	Finland
A01:13	Riau Andalan Pulp & Paper, APRIL	Companies and business	Indonesia
A03:25	RECOFTC	NGO	Thailand
A01:01	Scientific and Academic College of the Congo Basin Forest Partnership	Research network	Canada
A02:21	Sida, Public Sweden (shared)	Government agency	Sweden
A01:24	Sitowise	Companies and business	Finland
A01:30	SLU, EU Soil health Living Labs: support by NATI00NS & PREPSOIL	Universities and educational institutions	Sweden
A03:11	SNS (Nordic Forest Research)	Research network	Sweden
A03:23	Springer Nature	Companies and business	Germany
A02:24	Stiftens Egendomsförvaltningars Förening, Prästlönetillgångarna i Svenska kyrkan	Association	Sweden
A02:11	Swedish University of Agricultural Sciences (SLU)	Universities and educational institutions	Sweden
A02:21	Swedish Energy Agency, Public Sweden (shared)	Government agency	Sweden
A02:21	Swedish Forest Agency, Public Sweden (shared)	Government agency	Sweden
A02:21	Swedish Agency for Marine and Water Management, Public Sweden (shared)	Government agency	Sweden
A05:32	Swedish Forest Industries Federation	Association	Sweden
A04:20	UBC Faculty of Forestry	Universities and educational institutions	Canada
A04:01	Umweltdata GmbH	Companies and business	Austria
A03:33	University of Copenhagen	Universities and educational institutions	Denmark
A04:32	University of Helsinki	Universities and educational institutions	Finland
A02:10	United Nations Convention to Combat Desertification (UNCCD), UNCCD/G20 Global Land Initiative	Intergovernmental organization (IGO)	Germany
A02:30	Vytautas Magnus University (VMU)	Universities and educational institutions	Lithuania
A02:02	World Wood Day Foundation (WWDF)	NGO	U.S.A
A01:22	World Vision Korea, Sustainable Environment and Economy against Drought and Degradation in TEDA	NGO	Korea
A06:32	WWF	NGO	Switzerland
A03:25	Wyss Academy for Nature, RECOFTC (shared)	Research institute	Switzerland
Total: 68 exhibitors (25 Nordic/Baltic, 20 European, 23 Non-European)			

10.2 PARTNERS

There were a total of 34 official partners of the IUFRO World Congress 2024, with a majority originating from Sweden and other Nordic and Baltic countries. Close to 100 partners and organizations were involved in organizing and implementing the in-congress and pre-and post-congress excursions (see Table 8). Partners represent, for example, universities, research councils, associations, environmental organizations, global companies, forest management companies, tourism organizations, and governmental and other non-governmental organizations. Among these partners, ten were universities, reflecting strong academic participation. Several partners

are affiliated with IUFRO, emphasising the strong connection between the congress and global forestry research. Many of these partners contributed not only through financial support, but also by providing content during the congress, such as organizing lunchtime side events and actively participating in the exhibition by speaking at the Green Job Arena and the Innovation Stage. Many partners were also involved in organizing the in-congress and pre- and post-congress excursions (see Table 12). Several were also present as exhibitors, representing their organizations with dedicated booths. Notably, the Major Organizational Partner package and the Organizational Partner package were well utilised.

Table 11. List of all official partners of the IUFRO World Congress 2024

Partners	Country (HQ)	Partner status	Exhibition booth
Formas – the Swedish research council for sustainable development	Sweden	Major org. partner	✓ (Public Sweden)
The Nordic Council of Ministers	Denmark	Major org. partner	
Nordic Forest Research (SNS)	Sweden	Major org. partner	✓
Skogssällskapet	Sweden	Major org. partner	
Erling-Persson Foundation	Sweden	Patron	
Swedish Energy Agency	Sweden	Major org. partner	✓ (Public Sweden)
IKEA	Sweden	Platinum partner	
Sveaskog	Sweden	Major org. partner	
Swedish Forest Agency	Sweden	Major org. partner	✓ (Public Sweden)
WWF - World Wide Fund for Nature	Switzerland	Major org. partner	✓
Finnish Forest Industries Federation	Finland	Major org. partner	
The Swedish International Development Cooperation Agency (Sida)	Sweden	Major org. partner	✓ (Public Sweden)
The International Tropical Timber Organization (ITTO)	Japan	Org. partner	✓
The Forest Stewardship Council (FSC)	Germany	Org. partner	✓
CIFOR-ICRAF	Kenya	Org. partner	✓
Conservation International	U.S.A	Org. partner	✓
The Swedish Association of Outdoor Organizations	Sweden	Org. partner	
The Royal Swedish Academy of Agriculture and Forestry (KSLA)	Sweden	Major org. partner	✓
Agroforestry Network	Sweden	NGO Partner	✓
Swedish Agency of Marine and Water Management	Sweden	Major org. partner	✓ (Public Sweden)
Swedish Forest Industries Federation	Sweden	Major org. partner	✓
Norwegian University of Life Sciences (NMBU)	Norwegian	Org. partner	
University of Helsinki	Finland	Org. partner	✓
Vytautas Magnus University	Lithuania	Org. partner	✓
Latvia University of Life Sciences and Technologies	Latvia	Org. partner	
University of Copenhagen	Denmark	Org. partner	✓
SILAVA	Latvia	Org. partner	✓
Eesti Maaülikool (EMU)	Estonia	Org. partner	
Land and Forest Iceland	Iceland	Org. partner	
Agricultural University of Iceland	Iceland	Org. partner	
University of Eastern Finland	Finland	Org. partner	
Linnaeus University	Sweden	Org. partner	✓
Swedish University of Agricultural Sciences (SLU)	Sweden	Org. partner	✓
IUFRO	Austria	Major org. partner	✓
Total: 34 partners			21 partner exhibitors

Out of the 34 partners, 21 had their own exhibition booth. Several governmental partners, such as Formas, the Swedish Energy Agency, the Swedish Forest Agency, the Swedish International Development Cooperation Agency (Sida) and the Swedish Agency of Marine and Water Management, participated in the shared Public Sweden booth.



As presented in chapter 6.6, seven side events were organized by partners, including co-hosted events (e.g. IKEA and the Swedish Forest Agency) and Public Sweden’s co-hosted side event. Moreover, partners also filled 12 out of 19 time slots at the Green Job Arena, including panel discussions, and 15 out of 44 time slots on the Innovation Stage. IKEA stood out as a key contributor, as the company co-hosted two side events and filled a total of six time slots in the Innovation Stage and Green Job Arena.



Table 12. List of partners and organizations that were involved in organizing the in-congress, pre- and post-congress excursions

In-Congress Excursions	Pre- and Post-Congress Excursions
Arboreal	School for forest management, SLU
Biometria	Sveaskog
Drottningholms palace	Hjälmare canal / Steamship Gerda
Finnish geospatial research institute	Stora Enso
Future forests	Splitkom
Gålö sea camp	Hardraade Vikingship association
Gothenburg university	Ekebypark sculpture walk
Haga palace	Ytre Hvaler National park
Holmen forest	Midgard Viking Center
The Royal Swedish Academy of Agriculture and Forestry	Hyytiälä station sites
Royal Institute of Technology	Keuruu Harbor / Elias Rönnroth
Linköpings forest service	Gösta Serlachius museum
County Administrative Board of Stockholm	Jaakinsuo forest drainage experimental area
The Royal court	Västerbottens museum
Life 2 taiga	Svartberget experimental station (SITES, ICOS Sweden)
Linné university	Bonnstan Midsummer eve celebration – Skellefteå municipality
Luleå technical university	Abisko Scientific Research station
MISTRA digital forest	Jukkasjärvi Ice Hotel
MISTRA Sports and Outdoor	Vaisikkavuoma nature reserve
Nordic forest women	Pallas Meteorological Station
Nordluft automation	Nordic Husky farm
The Sami council	Arktikum science museum
SITES	Rovaniemi Santa claus village
Forestry Research Institute of Sweden	Pingvellir National Park
The Swedish forest historical society	Friðheimar farm
Swedish Forest Industries Federation	Droplaugarstaðir forest farm
Skogssällskapet	Icelandic forest research
The Cluster of Forest Technology	Haukadalur National Forest

cont. Table 12. List of partners and organizations that were involved in organizing the in-congress, pre- and post-congress excursions

In-Congress Excursions	Pre- and Post-Congress Excursions
The Archipelago Foundation	Skaftafell National park
Swedish University of Agricultural Sciences	Icelandic forest Service
Spillkråkan	Vök geothermal baths
Stockholm university	Skríðuklaustur
Stora Enso forest	Kasmu Captains village
Sveaskog	Oandu Forest trail
Svebio	Sagadi forest museum
Swedish Hunters Association	Järvesilja Experimental Station
Church of Sweden	Amatciens log houses
Swedish Orienteering Association	LIGNUMS
Swedish television	Laflora
Södra forest owners	Latvian State Forest Research Institute Silava
National Museum of Science and Technology	Estonian University of Life Sciences
Treearch	Vytautas Magnus University
Umeå university	Borregaard as
UNITE/ Helsinki university	Viken Skog
Uppsala university	Treklyngen
Wallenberg wood science center	Oslo municipality
	Det norske skogselskap
	County Governor of Østfold, Buskerud, Oslo og Akershus



Figure 6. Partner logos printed on re-board

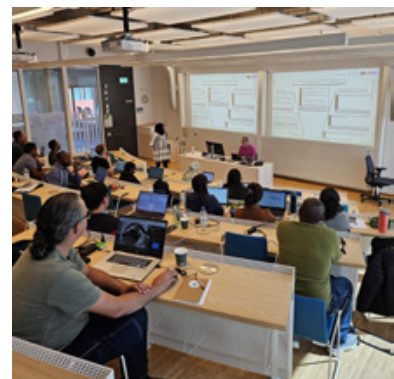


Figure 7. Contributors to the in-congress excursions

As an integral part of the Congress, IUFRO organized a Congress Scientist Assistance Programme (SAP) through its Special Programme for Development of Capacities (IUFRO-SPDC) providing early and mid-career forest scientists from Africa, Asia, Latin America, and Eastern Europe with financial assistance to participate in the Congress.

The course included three topics:

- *Research Methods in Forest Science*
- *Science-Society Interactions: Making Science Work for Policy and Practice*
- *Systematic Evidence Evaluation in Forest Science*



From 19 to 22 June 2024, the IUFRO SPDC Pre-Congress Training Course took place at SLU's Ultuna campus. SPDC is IUFRO's special programme for the development of capacities and this year, the training course gave scientists from the global south the opportunity to enhance essential skills needed to generate high-quality research results. It also focused on communicating such results to policy and practice. At SLU, 56 participants from 35 different countries joined in the workshop, in addition to IUFRO staff and lecturers.

The IUFRO 2024 secretariat was responsible for booking lecture halls at SLU and ordering refreshments and lunch for the group. Several lecture halls

were used for the three workshops, and the group also had access to small group work rooms, a student kitchen and a seating area where coffee and light snacks were served. The large lecture hall was used for the opening and closing of the workshop in the morning of 19 and 22 of June. In addition to the lecture halls, a technician was on call to assist with any technical issues.

Coffee and light snacks were provided outside the lecture halls in the mornings and afternoons, and lunch served in a restaurant on campus. The barbecue evening and the Swedish Midsummer lunch were highly appreciated.



The 26th IUFRO World Congress is the first IUFRO World congress to adopt a fully digital approach for all delegate communication. A dedicated 13-member Media Desk provided intensive coverage and produced 40 news articles, 31 video interviews and four TV shows distributed globally to delegates and stakeholders.

The strategic focus on digital communication channels and partnerships with established networks was effective, enhancing global outreach and engagement during the congress. The congress website served as the central hub for all content, which was complemented by a smartphone app for easy navigation.

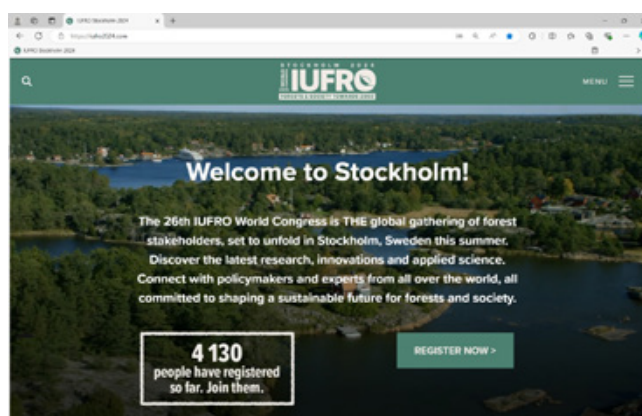
12.1 WEB STATISTICS

The last year before the congress, the IUFRO World Congress 2024 website (iufro2024.com) consisted of 129 published pages sorted under different headings.

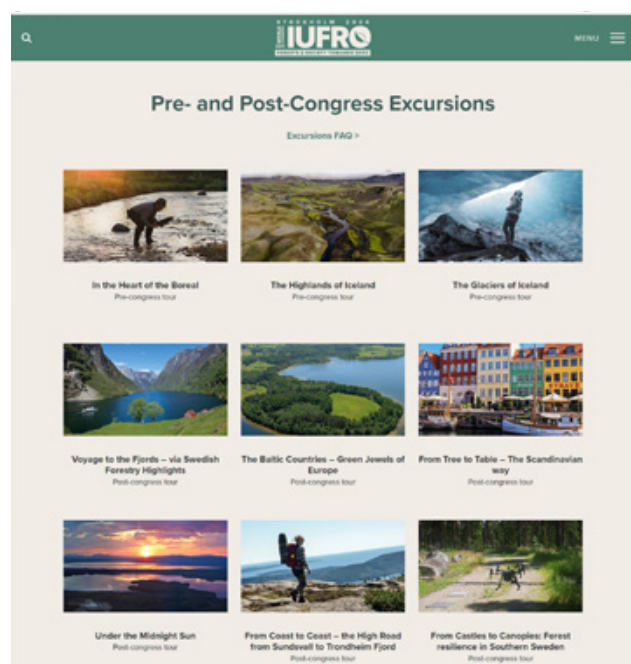
From 1 February 2023 to 10 July 2024, there were a total of 379,000 page views, 76,000 users and around 16,000 file downloads. The most visited pages were the Frontpage, Registration and Fees, IUFRO World Congress Week Overview, Detailed Programme (i.e. scientific), Sustainable Future, Call for Congress Abstracts, Themes IUFRO World Congress 2024, In-Congress Excursions, Accommodation and Keynote Speakers.

During June 2024 the IUFRO2024 website had a total of 43,000 visits made by 18,000 unique devices. The number of actual persons visiting the website in June was 13,600. During the same period 95,300 page visits were registered, which means the average user visited about 7 pages in total. The most visited pages in June were pages related to registration and fees, the scientific programme and travel information. 10% of the visitors clicked on links provided by the IUFRO World Congress newsletters, and 7% clicked on links from social media accounts, mainly the accounts of the Congress (on LinkedIn) and the IUFRO accounts on Facebook, LinkedIn and Instagram.

The number of visits increased dramatically



starting in December 2023 and continued on a higher level, with peaks in January and during the Congress in the last week of June 2024. The majority of IUFRO2024 website visitors could be traced back to Sweden, USA, Finland, Germany, Canada, the Netherlands and the United Kingdom.



12.2 APP STATISTICS

The app was downloaded to 3,982 mobile units – 2,152 with the Android operating system and 1,830 with iOS. Apple and Google require that you ask delegates for permission to gather data, which means that only part of the total usage can be accounted for. Consequently, the following statistics are based on approximately 400 users, which corresponds to around one-tenth of all users. From this statistics the following can be concluded. The app was started approximately 100 times per user, around 140 programme items were viewed per user and, on average, 29 of these were saved in a personal list by a user.

12.3 SOCIAL MEDIA

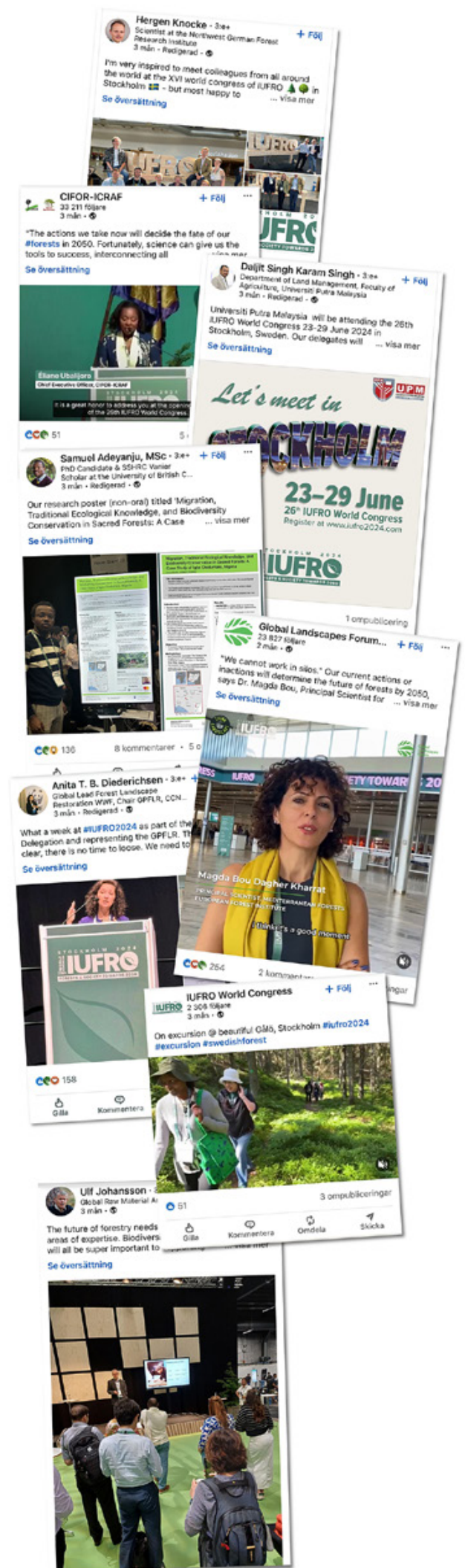
LinkedIn was the most used social media platform, generating 76,191 organic impressions and approximately 1,700 unique daily visitors to the World Congress account. Delegates and stakeholders were encouraged to share content using the #IUFRO2024 hashtag, resulting in 5,335 posts, mostly from Austria, the USA and the UK.

12.4 PRESS AND MEDIA

Media coverage spanned 112 news items across 84 unique channels, with a confirmed outreach of 158,000 people globally. Key outlets included global enterprises like IKEA, major news websites like Infobae and Naver, and regional and international media platforms such as der Standard, BioMed Central, Aftonbladet and National Geographic. Swedish sources provided the highest number of articles covering the Congress, followed closely by articles in English and Spanish.

12.5 NEWSLETTER

The Congress's daily newsletters were widely read by not only the delegates on site in Stockholm but also by stakeholders worldwide. 26,000 stakeholders were included as recipients, and the newsletters were read by approximately 12,000 delegates and stakeholders each day.



The Human Resources section of the IUFRO World Congress 2024 outlines the key committees and teams responsible for organizing and managing the Congress. The Congress Organizing Committee (COC), comprised of international experts in forestry and related sciences, played a central role in shaping the Congress. The Congress Scientific Committee (CSC) handled the scientific programme, with a detailed timeline for session proposals, abstract submissions and programme releases. The Congress Secretariat and Professional Congress Organizer managed the logistics, including registration and on-site activities. The Media Desk ensured communication and coverage, while the Volunteer Programme offered opportunities for participants to engage directly with the congress.

13.1 CONGRESS ORGANIZING COMMITTEE (COC)

Fredrik Ingemarson Chair, Swedish University of Agricultural Sciences

Raymond Wide Secretary, Swedish University of Agricultural Sciences

Birgitta Naumburg The Royal Swedish Academy of Agriculture and Forestry, KSLA

Karin Hornay Swedish University of Agricultural Sciences

Therese Huldgren Academic Conferences, Swedish University of Agricultural Sciences

Ulf Johansson Swedish University of Agricultural Sciences

Vivian Kvist Johannsen University of Copenhagen

Niclas Scott Bentsen University of Copenhagen

Hardi Tullus Estonian University of Life Sciences

Lauri T. Valsta University of Helsinki, Finland

Eeva-Stiina Tuittila University of Eastern Finland

Edda Oddsdottir Icelandic Forest Service

Adalsteinn Sigurgeirsson Icelandic Forest Service

Aris Jansons Latvia University of Agriculture

Vitas Marozas Vytautas Magnus University Agriculture Academy

Hans Fredrik Hoen Norwegian University of Life Sciences

Johan Bergh Linnaeus University, Sweden

Björn Hånell Swedish University of Agricultural Sciences

13.2 CONGRESS SCIENTIFIC COMMITTEE (CSC)

Elena Paoletti Chair, National Research Council, Italy

Teresa De Jesus Fidalgo Fonseca University of Tras-Os-Montes and Alto Douro, Division 1, Portugal

Marjana Westergren Slovenian Forestry Institute, Division 2, Slovenia

Ola Lindroos Swedish University of Agricultural Sciences, Division 3, Sweden

Donald A. Hodges University of Tennessee, School of Natural Resources, Division 4, USA

Pekka Saranpää Natural Resources Institute, Division 5, Finland

Purabi Bose Swedish University of Agricultural Sciences, Division 6, Sweden

Maartje Klapwijk Swedish University of Agricultural Sciences, Division 7, Sweden

Alexia Stokes French National Institute for Agriculture, Food and Environment, Division 8, France

Mónica Gabay National University of San Martín, Division 9, Argentina

Daniela Kleinschmit University of Freiburg, Vice-President Divisions, Germany

Shirong Liu Chinese Academy of Forestry, Beijing, Vice-President Task Forces, China

Wubalem Tadesse Ethiopian Environment and Forest Research Institute, President's Nominee for Africa, Ethiopia

Erich Schaitza Brazilian Agricultural Research Corporation, Embrapa Forestry Research, President's Nominee for South America, Brazil

Björn Hånell Swedish University of Agricultural Sciences, Representative of the Congress Organizing Committee, Sweden

Isabelle Claire Dela Paz International Forestry Students' Association, Philippines





13.3 CONGRESS SECRETARIAT

The Secretariat of IUFRO World Congress 2024 was fully staffed from September 2023 until June 2024.

Johan Adolfsson Public Relations Officer & Exhibition Manager

Sara Andersson Assistant Ceremonies and Excursions

Lovisa Eriksson Project Assistant Partnerships

Åsa Hofring Coordinator Innovation Stage

Karin Hornay Coordinator PCO

Jimmy Hägglund Project Assistant Partnerships

Björn Hånell Senior Advisor, Congress Organizing Committee

Rebecca Hunt Coordinator International Relations

Fredrik Ingemarson Chair, Congress Organizing Committee

Jimmy Karlsson Accounting Manager

Henrik Karmehag Congress Photographer

Maria Lindfors Assistant COC

Ulf Lovéus Graphic Designer and Web Editor

Anders Malmer Coordinator Pre-Congress training course

Per Olofsson Head of the Congress Secretariat

Britta Radeloff Coordinator Authorities

Göran Rune Senior Advisor

Raymond Wide Coordinator Excursions and Green Job Arena

13.4 PROFESSIONAL CONGRESS ORGANIZER AND SCIENTIFIC SUPPORT TEAM

The management of the World Congress registration process and activities at the venue was mainly conducted by SLU's own in-house Professional Congress Organizers (PCO), Akademikonferens. The scientific support team were led by the consultant company Invajo, which managed the entire abstract process, including submission, review, and notifications. They also handled scheduling and programme building, seamlessly integrating everything with the Congress app. The PCO and the scientific support team delivered high quality throughout the planning and carry through of the congress.



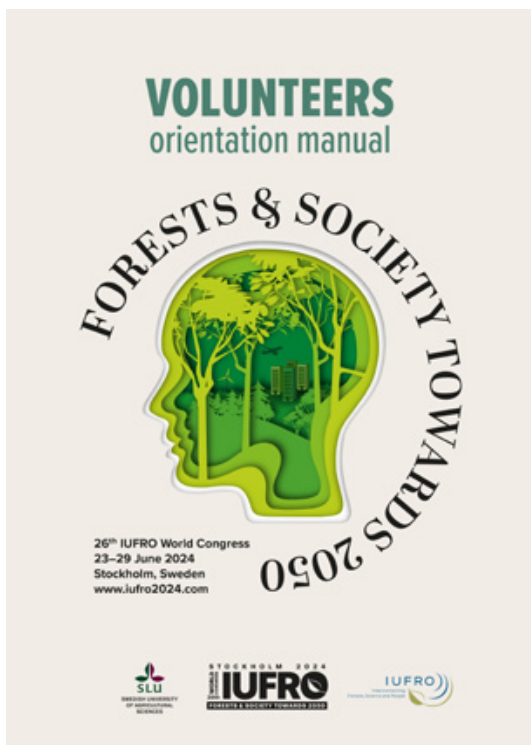
13.5 MEDIA DESK

The Media Desk was assigned to all communication planning, coordination and execution during the congress week. It provided coverage of selected sessions, speakers and events, according to the communication plan. It consisted of ten SLU employees: one chief editor, three back-office staff for editing and publishing, and six staff members creating content i.e. conducting interviews, writing articles, taking photos and videos. The Media Desk also included an external partner, Websedge, with three staff members creating TV-interviews and a daily TV-show.

13.6 VOLUNTEER PROGRAM

The IUFRO2024 Congress volunteer programme aimed to give volunteers valuable work experience during the days of the congress and have the chance to network and meet leading researchers, stakeholders and scientists from around the world. The congress also created opportunities for volunteers to connect with potential future employers. The volunteers were given the opportunity to participate in the Congress sessions and exhibition.

The selection process of the volunteers was open and widely publicized and communicated, which resulted in over 600 applicants to the 2024 Congress. In total, 82 volunteer applications were approved.



The obligations for the volunteers were:

- participate in the volunteer's one-day training
- occupy a specific station for at least two days during the congress
- be available for in-congress excursions on Wednesday 26 June
- assist at the congress outdoor mingle on Friday 28 June
- be an ambassador for the congress, be helpful and willing to assist
- carry out assigned duties in a responsible and professional manner
- inform delegates and attendees, based on written instructions.

A WARM THANK YOU TO OUR PARTNERS, EXCURSION HOSTS AND ORGANIZERS

Nordic & Baltic Host Partners

Norwegian University of Life Sciences (NMBU)
 University of Helsinki
 Vytautas Magnus University
 Leibniz University of Life Sciences and Technologies
 University of Copenhagen
 SLAVA
 East Macedonia (EMU)
 Land and Forest Iceland
 Agricultural University of Iceland
 University of Eastern Finland
 Swedish University of Agricultural Sciences (SLU)
 Linneaus University

Nordic Partners

SNS (Nordic Forest Research)
 The Erling-Persson Foundation
 KEA
 Forstet
 Sveriges
 Swedish Forest Agency
 Swedish Energy Agency
 Swedish Agency for Marine and Water Management
 Sida
 The Nordic Council of Ministers

The Royal Swedish Academy of Agriculture and Forestry
 Skogsmiljökapet
 Svenska Miljöförbundet – Founded by VI Agroforestry
 AgriForestry Network
 Swedish Forest Industries
 Finnish Forest Industries

In-Congress Excursions

Arborea
 Biomedia
 Drottningholm palace
 Finnish geospatial research institute
 Future forests
 Gädd sea camp
 Gothenburg university
 Haga palace
 Holman forest
 The Royal Swedish Academy of Agriculture and Forestry
 Royal Institute of Technology
 Linköping forest services
 County Administrative Board of Stockholm
 The Royal court
 Life 2 talga
 Linné university
 Luleå technical university

MISTRA digital forest
 MISTRA Sports and Outdoor
 Nordic forest women
 Nordic automation
 The Sami council
 SITES
 Forestry Research Institute of Sweden
 The Swedish forest historical society
 Swedish Forest Industries Federation
 Skogsmiljökapet
 The Cluster of Forest Technology
 The Archipelago Foundation
 Swedish University of Agricultural Sciences
 Spårförban
 Stockholm university
 Stora Enso forest
 Sveaskog
 Svebio
 Swedish Hunters Association
 Church of Sweden
 Swedish Orienteering Association
 Swedish television
 Södra forest owners
 National Museum of Science and Technology
 Tiesearch
 Umeå university

UNITE/Helsinki university
 Uppsala university
 Wallenberg wood science center

Pre- and Post-Congress Excursions

School for forest management, SLU
 Sveaskog
 Hålsjöarna canal / Steamship Gerdä
 Stora Enso
 Spårförban
 Hårdaade Vikingship association
 Ekbyepark sculpture walk
 The Hyalar National park
 Midgård Viking Center
 Hyytiälä station alias
 Kevasa Harbor / Elias Rönkä
 Gösta Serlachius museum
 Jaakkimo forest drain
 Västerbottens museum
 Sverberget experientia
 Bonstan Midsummer
 Abisko Scientific Research station
 Jukkasjärvi Ice Hotel
 Valkeavuoma nature
 Pallas Meteorological station

Nordic Husky farm
 Artikåm science museum
 Rovaniemi Santa Claus village
 Bingvöll National Park
 Fjällsävar farm
 Drömlingsgården forest farm
 Icelandic forest research
 Haukadalur National Forest
 Skutafell National park
 Icelandic forest service
 Vök geothermal station
 Starbäcksmästar
 Karsma Captain's log
 Gaudu Forest try
 Sagad forest
 Järvenpää Export Station
 Armatiers log
 LIGNUMS
 Lillån
 Latvian State Forest Research Institute
 Estonian University of Life Sciences
 Vytautas Magnus University



This is how we put science to practice for a sustainable future



The Stockholm Congress Statement is the output document from the XXVI IUFRO World Congress, distilled from the deliberations on Forests and Society towards 2050. These messages are considered central to ensuring the survival of forest ecosystems and human well-being around the world, and to guiding the transformations needed for a sustainable future for all. Decisive actions at all levels in line with these messages will hopefully contribute to maintaining a stable planet that continues to support life and human well-being.

The XXVI IUFRO World Congress calls for resolute and equitable actions and best use of knowledge provided by the global science community for informed and far-sighted decisions. The Congress provided a global forum for the exchange of knowledge, perspectives, and visions between scientists across a broad spectrum of disciplines, and dialogue with youth, policy makers, forest managers, business representatives, and civil society organizations.

Climate change, biodiversity loss, environmental pollution and mounting social injustice are among

the most severe crises the world is facing today. Tackling these interlinked crises requires resolute and equitable actions and everyone must take responsibility in their own sphere of influence.

The Congress urges to make best use of the knowledge of the global science community to:

- strengthen forest resilience and climate adaptation
- maintain and enhance the social values of forests for sustainable societies
- expand the role of forests and forest products in a responsible circular bioeconomy and
- transform forest-related sciences for the future.

Actions at all levels in line with these messages can contribute to maintaining a stable planet that continues to support life and human well-being.

The Stockholm Congress Statement was presented in the Closing Ceremony of the Congress on 29 June 2024. The Statement is the output document of the Congress and the result of a thorough participatory drafting process. The Statement is available in English, German, French and Spanish on the IUFRO World Congress 2024 website (iufro2024.com).

The Nordic and Baltic host countries have also provided significant input to the IUFRO Stockholm Congress Statement. The regional contribution provided key messages about roles and needs towards 2050 directed to researchers and policymakers, aiming to provide strategic guidance, and enabling bold action. The Nordic and Baltic contribution can be found on the IUFRO World Congress 2024 website (iufro2024.com).





FORESTS & SOCIETY TOWARDS 2050





Secretariat for IUFRO World Congress 2024

P O Box 7091

SE-750 07, Uppsala

Sweden

Visit: Almas allé 7, Uppsala

Phone: +46 18 67 32 39

E-mail: iufro2024@slu.se