

# IUFRO Annual Report 2009

The Global Network for Forest Science Cooperation



International Union of Forest Research Organizations  
Union Internationale des Instituts de Recherches Forestières  
Internationaler Verband Forstlicher Forschungsanstalten  
Unión Internacional de Organizaciones de Investigación Forestal



# Foreword

by Don K. Lee, IUFRO President

*For IUFRO the year 2009 was a year of considerable change and a year in which new directions were set for the future. This Annual Report highlights the relevance of our work and the crucial importance of global networking in forest-related research. Our activities furnish evidence of our commitment to the dissemination of scientific knowledge to stakeholders and decision-makers and are a contribution to forest policy and on-the-ground forest management for the benefit of forests and people.*

Throughout the year, research units of the IUFRO network held excellent meetings to promote global cooperation in forest-related research and communicated their research findings to the scientific community and forest policy makers.

We are highly aware of the continuous need to enhance equity in IUFRO in all aspects, including gender, age and regional representation. In response to the necessity to improve activities in developing countries, IUFRO, through its Special Programme for Developing Countries (IUFRO-SPDC), conducted successful training courses aimed at building scientific capacity in Latin America, Africa and Asia. In addition, financial support could be mobilized to allow scientists from these regions to participate in conferences such as the XIII World Forestry Congress held in Buenos Aires, Argentina.

Let me also highlight the continued activities of IUFRO in promoting the scientific knowledge of our network to international forest policy. A successful example of our efforts in this context are certainly the *Global Forest Expert Panels (GFEP)*, an IUFRO-led initiative of the Collaborative Partnership on Forests (CPF). The *Global Forest Expert Panel on Adaptation of Forests to Climate Change* prepared an assessment report entitled *Adaptation of Forests and People to Climate Change*. It was launched at the UNFF during its 8th Session in April 2009 and also presented at the XIII World Forestry Congress and at Forest Day 3 held in Buenos Aires and Copenhagen, respectively. The main findings of the assessment report were taken up by news media from around the world.

Another IUFRO-led CPF Initiative is the *Global Forest Information Service (GFIS)* that continued to progress well in 2009 by upgrading its professional internet gateway for forest-related information and organizing training courses for information providers worldwide.

In its effort to strengthen partnerships with international organizations and processes, such as FAO, ITTO, CIFOR, UNFF and CBD, IUFRO succeeded in establishing a new partnership with the US Forest Service in 2009. I am also proud to say that we celebrated the 60<sup>th</sup> anniversary of the signing of a memorandum of understanding between IUFRO and FAO at the XIII World Forestry Congress.



Photo: Don K. Lee, IUFRO President

At the IUFRO Board Meeting in Buenos Aires, the final report of the Review Panel that formed part of the process of developing a new IUFRO Strategy for the Board period 2010-2014 was presented. The Panel had elaborated recommendations on IUFRO's scientific structure, thematic challenges and opportunities, thus providing guidance on how to adjust and position IUFRO in the future. Among other things, it highlighted in particular the need for more rapid response to emerging issues in a short time, and thematic cooperation on key issues like climate change, biodiversity, bio-energy, and water.

A most important item on the Board meeting agenda was the decision on who to recommend for the future Board, following the rule that all voting members of the next IUFRO Board will be elected by the International Council based on the recommendation of the outgoing IUFRO Board. This election will take place at the XXIII IUFRO World Congress.

Regarding the preparations for the XXIII IUFRO World Congress, which will convene from 23-28 August, 2010, in Seoul, Republic of Korea, the Congress Organizing Committee (COC), the Congress Scientific Committee (CSC) and IUFRO Headquarters made considerable progress throughout the year, and I would like to commend them for their joined efforts.

In conclusion, I seize this opportunity to thank the many committed people who have helped IUFRO along the way. Let me extend my thanks to the IUFRO family - Member Organizations, Board members, Officeholders, International Council and other members of the IUFRO units and the Secretariat - for their untiring support. Special words of thanks shall, of course, go to our donors, because our achievements would not have been possible without their generous support.



# Table of Contents

<b>Preface by IUFRO President</b>	<b>1</b>
<b>IUFRO at the World Forestry Congress in Buenos Aires</b>	<b>3</b>
<b>IUFRO at UNFCCC COP15</b>	<b>3</b>
<b>IUFRO Divisions</b>	
Division 1 - Silviculture	4
Division 2 - Physiology and Genetics	6
Division 3 - Forest Operations Engineering and Management	7
Division 4 - Forest Assessment, Modelling and Management	8
Division 5 - Forest Products	9
Division 6 - Social, Economic, Information and Policy Sciences	10
Division 7 - Forest Health	11
Division 8 - Forest Environment	13
<b>IUFRO Task Forces</b>	
Improving the Lives of People in Forests	13
Illegal Logging and FLEGT	14
Traditional Forest Knowledge	14
Forests and Human Health	14
<b>Initiatives, Projects, Programmes</b>	
Global Forest Information Service (GFIS)	15
Special Programme for Developing Countries (IUFRO-SPDC)	15
CPF Global Forest Expert Panels (GFEP)	16
World Forests, Society and Environment (IUFRO-WFSE)	17

<b>Outlook</b> by Jung-Hwan Park and John Parrotta	<b>18</b>
<b>Organizational Information, Structure and Statistics</b>	<b>19</b>
Finances	20
Sponsorships (Grants and In-kind Contributions to IUFRO in 2009)	21
New Members	22
Honours and Awards	23
Communication Activities	23
Publications	24
IUFRO Board Members and Coordinators	24
Editorial	24

**Note:**

All texts in this Annual Report have either been provided by IUFRO officeholders or have been taken from IUFRO conference information websites or reports.

**Photos on pages 2 and 3 from left to right:**

Experimental plantation of *Pinus cembra* and *P. mugo*; by *Ioan Blada (IUFRO Division 2)*

Participants at the Biosecurity Conference in New Zealand, by *Mike Wingfield (IUFRO Division 7)*

Olman Serrano, FAO, Don Koo Lee, IUFRO, and Jan Heino, FAO by *IISD Reporting Services*

Forest in Costa Rica by *Judith Stoeger-Goiser, IUFRO Headquarters*



## IUFRO at the XIII World Forestry Congress

The XIII World Forestry Congress, “Forests in Development: A Vital Balance”, **from 18-23 October 2009 in Buenos Aires, Argentina**, was a most successful event. It was jointly organized by the Food and Agricultural Organization of the United Nations (FAO) and the Government of Argentina and attracted more than 7000 participants from international organizations, governments, universities, private sector and civil society.

One of the main outcomes of the Congress was a **declaration of actions** through which the vital balance between forests and development can be improved. The Congress also elaborated recommendations to the UNFCCC calling for urgent actions on issues such as promotion of sustainable forest management or a need for improved inter-sectoral cooperation, for example.

**For IUFRO, the WFC was a great success.** Two IUFRO sessions in particular attracted several hundred participants: The IUFRO Directors’ Forum led by Konstantin von Teuffel (Forest Research Institute Baden-Württemberg, Germany) and Ann Bartuska (USFS) discussed the issue of *Forest monitoring as a basis for political decision-making*; and the IUFRO Symposium on *Emerging Issues in Forest Science* included statements by all IUFRO Division Coordinators and was followed by a lively debate with the audience, moderated by Niels Elers Koch, IUFRO Vice-President Science.

In his address during the opening plenary session, Professor Don Koo Lee, President of IUFRO, recalled the 60 years of successful collaboration between IUFRO and FAO and, in the closing plenary Prof. Lee and FAO ADG Jan Heino were part of a moderated session to celebrate this **60th anniversary of signing a Memorandum of Understanding by FAO and IUFRO** and re-signed the MoU to foster their very productive collaboration also in the future.

Furthermore, the **pre-Congress training workshop** held by the Special Programme for Developing Countries (IUFRO-SPDC) and the side events organized by the Special Project on World Forests, Society and

Environment (IUFRO-WFSE), the Global Forest Information Service (GFIS) and the IUFRO Task Forces on Forests and Human Health, Traditional Forest Knowledge and Improving the Lives of People in Forests added to the successful presentation of IUFRO knowledge at the WFC. Last but not least, the IUFRO booth and the adjacent IUFRO World Congress booth attracted so many people that both booths were virtually sold out at the end of the Congress week.

Before the WFC, the IUFRO Board held its annual meeting in Buenos Aires, where it discussed, among other things, **emerging issues in forest science**. The Board members identified the following six key themes that should guide the future work of IUFRO:

- Forests for people**
- Forests and climate change**
- Forest bio-energy**
- Forest biodiversity**
- Forests and water**
- Resources for the future**

These themes will form the backbone for the IUFRO Strategy 2010-2014 which will be drafted based on the Board’s guidance.

---

## IUFRO at UNFCCC COP15

IUFRO was well represented at the Copenhagen climate summit, co-organizing a side-event on **Forests, Livelihoods and Climate Change**, co-hosting and co-organizing **Forest Day 3**, and promoting IUFRO and the upcoming XXIII World Congress in Korea with a **booth**.

In the course of Forest Day 3, IUFRO, together with the European Forest Institute successfully held a learning event called **Boreal and Temperate Forests and Climate Change – What will happen? And what actions should be taken?**



## Silviculture - Division 1

**Prominent research in Division 1 during 2009 covered both typical cross-sectional and pure silvicultural topics.**

A cross-divisional activity together with Divisions 8 (Forest Environment) and 4 (Forest Assessment, Modelling and Management) was the conference on ***Spruce in the context of global change – ecology, silviculture, forest products, management risks and conservation practices*** held in Sweden. The conference focused on a very diverse range of issues relating to spruce and climate change in Europe, Asia and North America. Technical sessions included aspects of long-term forest development, production risks, genetic stock, regeneration, biomass and timber, spruce ecology and physiology, as well as environmental services from spruce forests.

A COST workshop in Finland on ***Peatlands in the LULUCF/AFOLU Reporting*** aimed at identifying the data needs in the procedures currently applied in the reporting of greenhouse gas emissions from managed peatlands. Peat soils contain huge amounts of carbon, justifying a prominent place in the climate change – carbon debate. Drainage of peatlands for forestry has led either to net accumulation of atmospheric CO<sub>2</sub> in the ecosystem or net release of CO<sub>2</sub> from it. While forests on mineral soils appear as CO<sub>2</sub> sinks, the soil emissions in peatland forests significantly decrease or offset the C sink. The meeting recommended a better recognition of direct and indirect consequences of peatland use.

40 years after the first meeting of the IUFRO Silver fir group in Vienna in 1969, the ***12<sup>th</sup> International Silver Fir Symposium*** was hosted by the Austrian Federal State Vorarlberg in Hitisau, Austria. Scientists from 11 nations discussed the current status and future perspectives of silver fir (*Abies alba* Mill.) and its relatives in Europe.

The symposium clearly demonstrated that European forest ecosystems with silver fir are already influenced by climate change effects: prosperous population dynamics in higher elevations and in central European forest stands were reported, whereas in the southern range of the species an increase of pathogens was stated. First results of the second IUFRO silver fir provenance trial provided surprising findings on the remarkable site tolerance of certain provenances. It was concluded that there is an urgent need to increase the research activities in order to provide forest managers and policy makers with suitable management strategies. The joint evaluation of the available national and international provenance trials was recommended

An international conference on ***Knowledge-based management of tropical forests*** in French Guiana aimed at discussing important research themes for the sustainable management of tropical rainforests. Various people use tropical forest ecosystems for multiple and interrelated purposes such as logging, picking of non timber forest products, farming activities and development of environmental services. At the meeting Six themes were identified: (1) Valuing both resources and forests, (2) Forests for local development, (3) Biodiversity: unrecognized wealth, (4) Forests and climate change, (5) Land-use change and forestry and, (6) Plantations roles and status. It showed that the landscape scale must be taken into account before any decision making as there are more and more patchworks of forest types and practices intermixed with other land uses.

## Meetings

March 16-20, Rotorua, New Zealand  
**IUFRO International Forest Biosecurity Conference**  
IUFRO 7.02.00, 7.03.00, **1.01.04**, 8.02.02

May 19-20, Helsinki, Finland  
**COST 639 Workshop: Peatlands in the LULUCF/AFOLU reporting**  
IUFRO **1.01.02**.

August 31 – September 3, Halmstad, Sweden  
**Spruce in the context of global change: Ecology, silviculture, forest products, management risks and conservation practices**  
IUFRO **1.00.00**, **1.01.08**, 4.00.00, 8.00.00; University of Copenhagen, Forest & Landscape, Denmark.

August 31 – September 04, Hittisau, Austria  
**12<sup>th</sup> International Silver Fir Symposium: The Silver fir (*Abies alba* Mill.) and its relatives in Europe: current status and future perspective**  
Sponsors: **IUFRO 1.01.09**

November 22 – 28, Cayenne, French Guiana  
**Knowledge-Based Management of Tropical Rainforests**  
IUFRO **1.02.00**

## Publications

Special issue of Forest Ecology and Management  
**Old Forests, New Management**  
Volume 258, Issue 4, Pages 339-538. July 2009.

Special issue of Mountain Research and Development  
**Mountain Forests in a Changing World**  
Volume 29, no 2. May, 2009

Unasylva No. 231/232, Vol. 60, 1-2  
**Adapting to Climate Change**  
Food and Agriculture Organization of the United Nations, Rome 2009.

Special issue of Journal of Forest Research  
**Feasibility of Silviculture for Complex Structures**  
Volume 15, Issue 1, (February 2010)

Special issue of Forest Ecology and Management  
**Adaption of Forests and Forest Management to Changing Climate**  
Volume 259, Issue 4, (February 2010)

Special issue of Forest Policy and Economics  
**Adapting Forest Policy and Planning to Meet the Challenge of Climate Change**  
(Available in spring 2010)

Nilsson, U., U. Johansson & J.P. Skovsgaard (eds.) 2009:  
**SPRUCE 2009. Abstract Volume. International conference on spruce in the context of global change: ecology, silviculture, forest products, management risks and conservation practices**  
Conference held in Halmstad, Sweden, 31 August – 3 September 2009. IUFRO and Swedish University of Agricultural Sciences. 56 pp.

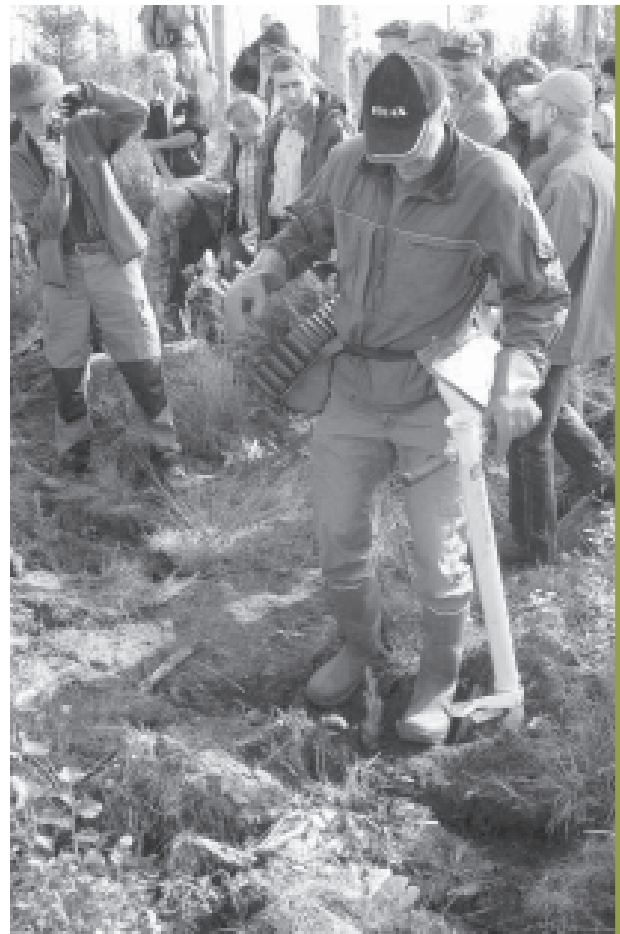
Special issue of Forest Ecology and Management  
**The Ecology and Silviculture of Beech: from Gene to Landscape** (Available in early 2010)

Topics in Biodiversity and Conservation, Vol. 9  
**Plantation Forests and Biodiversity: Oxyoron or Opportunity?**  
Brockerhoff, E.G.; Jactel, H.; Parrotta, J.A.; Quine, C.P.; Sayer, J.; Hawksworth, D.L. (Eds.)  
Reprinted from Biodiversity and Conservation, Volume 17, No. 5, 2008. ISBN: 978-90-481-2806-8  
This book can be regarded as the product of 3 IUFRO meetings and collaboration between at least 3 IUFRO Divisions (1, 7 & 8) plus IUCN, WWF and others.

**Photos on pages 4 and 5 from left to right:**  
At the spruce conference in Halmstad, Sweden  
*from Conference homepage*

Paracou forest in French Guiana taken from the flux monitoring tower; *by Laurene Feintrenie (IRD/CIFOR)*

At the spruce conference in Halmstad, Sweden  
*from Conference homepage*





## Physiology and Genetics - Division 2

*Research activities include root, stem canopy and whole tree processes, reproduction, seed physiology, plant development, nutrient cycling, and tree response to temperate, drought and global climate change. Genetic research includes breeding of important species as well as genetic mapping, genetic transformation and engineering of trees, marker-assisted tree improvement, and the genetics of biodiversity.*

At the **2nd International Conference on Conservation of Forest Genetic Resources in Siberia (CFGRS-2009)** the main focus was on genetics of sustainable and productive forest trees under anthropogenic effects and global climate change. The meeting was held in Siberia in recognition of the great importance of the Siberian taiga in regulating global climate and the biospheric role of Siberian forests in the regulation of global biogeochemical cycles. Obviously, studies of the genetic structure of populations of forest tree species in the north-Asian part of their natural habitats, especially in the taiga zone, were insufficient. There is a special lack of systematic studies of the effects of man-made pollution, forest exploitation and global climate change on the genetic structure of stands. Further syntheses of traditional and modern molecular genetic approaches for the intensification of genetics and breeding to improve and preserve the forests are needed.

The conference on **Seed Orchards and the Link to Long-term Tree Breeding in Response to Climate Change** aimed at presenting advances and reviewing the state-of-the-art of techniques and methods related to genetics of seeds and seed orchards. Particular emphasis was put on the link between long-term breeding and seed orchards; the management of seed production; flowering; injuries and protection; economics; seed management, physiology and technology; seed dormancy; testing and storage; and gene conservation. Special attention was paid to aspects of changing environment and global warming.

The main purpose of the **9th International Christmas Tree Research & Extension Conference** was to provide a forum for the exchange of scientific research results concerning the production and marketing of Christmas trees and greenery. Specific topics that were covered at the event included, among other things: Planting stock propagation & production; plantation establishment and cultivation; fertilization and nutrition; genetics; pest management (disease, insects, weeds); economics and management issues; post-harvest quality; and certification and import/export issues.

### Meetings

28 June - 2 July, Whistler, BC, Canada  
**IUFRO Tree Biotechnology International Conference**  
 IUFRO 2.04.05

3-9 August, Novosibirsk, Russia  
**2nd International Conference on Conservation of Forest Genetic Resources in Siberia (CFGRS-2009):**  
 Genetics of sustainable and productive forest trees under anthropogenic effects and global climate  
 IUFRO 2.02.00, 8.01.07

8-11 September, Jeju Island, Republic of Korea  
**Seed orchards and the link to long-term tree breeding in response to climate change**  
 IUFRO 2.09.01

14-18 September, Corvallis, Or, And Puyallup, Wa, US  
**9th International Christmas Tree Research & Extension Conference**  
 IUFRO 2.02.09

### Publications

**Proceedings: Christmas Trees Conference 2007**  
 Thomsen, I.M., Rasmussen, H.N. & Sørensen, J.M. (Eds.) 2008: Proceedings of the 8th International Christmas Tree Research and Extension Conference. Forest & Landscape Working Papers No. 26-2008, 145 pp. Forest & Landscape Denmark, Hørsholm. Conference of IUFRO Working Unit 2.02.09 - Christmas Trees, held at Hotel Bogense Kyst, Denmark, August 12th - 18th, 2007.

**Book of Abstracts: Adventitious Root Formation**  
 5th International Symposium on Adventitious Root Formation: From cell fate flexibility to root meristem determination and biomass formation. June 16–20, 2008, Alcalá de Henares, Spain



# Forest Operations Engineering and Management - Division 3

*In 2009 Division 3 meetings dealt with topics such as tree forest nursery management, forest restoration and environmentally sound forest operations.*

**Tree nursery stock production and forest restoration** were discussed at a conference in Rome. Scientists, forest managers, policy advisors in forestry and private nursery entrepreneurs and producers of nursery equipment, had the opportunity not only to display results of their work but also to present new ideas for technological innovation, prototypes and applications to be marketed for businesses, and discuss future development within this area.

Technical innovation and forethought are needed to adapt forest nursery management and forest restoration. Contemporary forest restoration is a complex task, because it assumes different forms according to diverse ecological, socio-political and historic contexts. Forest restoration is under way in order to counteract the negative effects of human activities and it is asked to maintain or enhance biodiversity, mitigate climate change, and repair ecosystem functions. Therefore, forest restoration requires creativity and flexibility in applying silvicultural tools. A pragmatic approach is needed as well, as costs of restoration and the scale of degradation are certain constraints.

The **32nd Council on Forest Engineering (COFE) Annual Meeting** focused on environmentally sound forest operations and what better venue than Lake Tahoe, California/Nevada? Recent fires there showed the need to reduce forest fuels, but environmental and aesthetic concerns make it difficult to operate in the Tahoe Basin. A field trip highlighted the challenges: numerous regulations, public scrutiny, sensitive areas, and water quality issues.

At the **Workshop on Forestry Utilization in Mediterranean Countries with Particular Respect to Sloping Areas** held in the framework of the 33rd CIOSTA CIGR Conference 2009, participants looked at the forest-related, social and economic characteristics of the Mediterranean region and at how they affect the forest management and the forest utilization systems. Mediterranean forests and woodlands play a key role in the welfare of urban and rural Mediterranean communities and therefore require special attention. Their conservation and management affects the soil and water resources, both being key strategic resources for Mediterranean societies. In this situation, a coordinated approach throughout the Mediterranean basin is needed to develop reliable information and tools based on sound science in order to improve forest management and utilization.

During the workshop the potential of a scientific network between Mediterranean countries regarding the main topics of IUFRO Unit 3.06.00 was evaluated.

## Meetings

12-14 March, Rome, Italy  
**Innovation and New Horizons in Tree Nursery Stock Production and Forest Restoration - from Research to Business.**  
IUFRO 3.02.00, 3.02.01, 3.02.02

7-11 June, Morgantown, West Virginia, United States  
**Small-scale Forestry Symposium**  
IUFRO 3.08.00

15-18 June, North Lake Tahoe, United States  
**COFE Annual Meeting 2009**  
IUFRO 3.00.00

17-18 June, Reggio Calabria, Italy  
**Workshop on Forestry Utilization in Mediterranean Countries with Particular Respect to Sloping Areas**  
IUFRO 3.06.00

17-20 August, Mount Gambier, Australia  
**Meeting Multiple Demands for Forest Information: New Technologies in Forest Data Gathering**  
IUFRO 4.01.00, 4.02.03, 6.15.00, 3.01.00

3-5 November, Nanjing, China  
**International Conference on Logging and Industrial Ecology 2009**  
IUFRO 3.04.00

## Photos on pages 6 and 7:

Both photos on page 6 are from the seed orchard conference held on Jeju Island, Republic of Korea;  
by Kyu-Suk Kang (IUFRO Division 2)

Below: Logs; by Alexander Buck, IUFRO Headquarters





## Forest Assessment, Modelling and Management - Division 4

*Major activities focused on new tools for inventory and monitoring programs, impact assessment and forest data collection.*

**Forest inventory and monitoring programs** are challenged to produce unbiased, precise, timely, and cost-efficient estimates of forest attributes and their trends with complementary spatial products from local to global scales. Earth Observation (EO) satellites are important tools to accomplish these tasks. An international conference in Quebec City discussed, developed, and demonstrated the use of EO data for forest inventory and monitoring.

New data collection technologies have the potential of using data collected for one purpose for multiple other purposes. IUFRO Division 4 scientists discussed the possibilities of **meeting multiple demands for forest information** at a conference in Australia. Data captured by harvesters for optimisation purposes, for instance, may also be used for monitoring of harvesting operations, yield mapping, yield auditing and the development of predictive models for future harvesting operations. Likewise, airborne LiDAR data collected for inventory purposes may also be used for operations planning or ecological assessments.

The EFORWOOD conference brought together researchers, policy makers and practitioners from all over the world in discussion about **sustainability impact assessment of the forest-based sector**. One of the conference focus areas was on the EFORWOOD project main outcome, the ToSIA tool, a dynamic sustainability impact assessment model that analyses environmental, economic, and social impacts of changes in forestry-wood production chains, using a consistent and harmonised framework from the forest to the end-of-life of final products.

### Meetings

16-18 March, Chandigarh, India  
**Plant Invasion and Forest Ecology:  
Concerns and Solutions**  
IUFRO 4.02.02, 8.02.04, SPDC

16-18 April, Prague, Czech Republic  
**Forest, Wildlife and Wood Sciences for Society  
Development**  
IUFRO 4.00.00

19-22 May, Quebec City, Canada  
**Extending Forest Inventory and Monitoring, over  
Space and Time**  
IUFRO 4.00.00, 4.01.00, 4.02.00, 4.02.05, 4.03.00

9-12 June, Akure, Nigeria  
**Forest Measurements in Complex Tropical Forests**  
IUFRO 4.01.03

17-20 August, Mount Gambier, Australia  
**Meeting Multiple Demands for Forest Information:  
New Technologies in Forest Data Gathering**  
IUFRO 4.01.00, 4.02.03, 6.15.00, 3.01.00

24-28 August, Salern/South Tyrol, Italy  
**IUFRO Working Party Meeting 4.04.03 SilvaPlan**

31 August - 3 September, Halmstad, Sweden  
**Spruce in the Context of Global Change: Ecology,  
Silviculture, Forest Products, Management Risks and  
Conservation Practices**  
IUFRO 1.00.00, 1.01.08, 4.00.00, 8.00.00

8-10 September, Birmensdorf, Switzerland  
**Long-term Ecosystem Research: Understanding the  
Present to Shape the Future**  
IUFRO 4.01.01

20-25 September, Niigata, Japan  
**International Conference on Multipurpose Forest  
Management**  
IUFRO 4.00.00

23-24 September, Uppsala, Sweden  
**Final EFORWOOD Conference: Shape your  
sustainability tools**  
IUFRO 4.00.00, EU FP 6, EFORWOOD

28 October, Darmstadt, Germany  
**Sustainable Forest Management and Accounting –  
Resolutions during the Financial Crisis**  
IUFRO 4.05.00, 4.05.01, 4.05.02

### Publication

**Innovations in Forestry Accounting: Integration of  
Forest Assets and Non-Market Environmental  
Benefits into Management and National Accounting  
and Reporting**  
Austrian Journal of Forest Science 126 (2009), 1/2, 118 p.  
Selected contributions to XXII IUFRO World Congress in  
Brisbane, Australia, 8 – 13 August 2005.  
Authors: Jöbstl, H.; Herbohn, K.; Tzschupke, W.; Campos, P.  
and Caparrós, A.; Maraseni, T.N.; Cockfield, G. and Apan, A.;  
Gios, G. and Goio, I.

### Photo:

Coniferous forest near Brasov, Romania;  
by Tarun Bathija, IUFRO Headquarters

## Forest Products - Division 5

*The recently intensified debates and discussions on climate change have introduced many additional challenges to the efficient and sustainable utilization of forest products.*

Efficient processing technologies and maximized wood utilization constitute major components in the green business strategy designed to conserve resources, reduce impacts to the environment, human safety and health, and promote greater overall efficiency. The Asia and the Pacific Forest Products Workshop on **Green Technologies and Products for Climate Change Mitigation and Adaptation** in Sri Lanka, aimed to provide a forum for linking various agencies and institutions dealing with climate change issues in forest products processing and utilization, and to share strategies, experiences and knowledge, related to green forest products technology.

In a globalized world where technology at the workplace is rapidly changing, continuous professional training is gaining in importance. The wood-working industry characterized by constant technological development and product innovation and the emergence of new markets is no exception here. Against this background, a training course was organized by the International Wood Academy of Hamburg, Germany, and co-sponsored by IUFRO WP 5.05.00 with a focus on **particle- and fibre-based composites**.

For the first time an Annual Plenary Meeting and Conference of the International Academy of Wood Sciences (IAWS) was organized in Russia with support of IUFRO and the Regional Coordination Council on Wood Science (RCCWS). The motto of the event was **wood as a renewable source** of vital values for a changing world.

### Photos:

Measuring the thickness of a particleboard sample after soaking it 24 hours in water; *courtesy of Walailak University*

Thinnings bundled for sale as fuel wood in northern Wales, UK; by *Valerie Lemay, (Division 4)*

## Meetings

11-13 May, Madison, United States  
**10th Int'l Conference on Wood & Biofiber Plastic Composites & Cellulose Nanocomposites Symposium**, IUFRO 5.05.00

4-6 June, Brasov, Romania  
**Wood Science and Engineering in the Third Millennium – ICWSE 2009**  
IUFRO 5.05.00  
**Proceedings** published in the 7th edition of *Transilvania University Brasov, Romania*, ISSN 1843-2689.

15-21 June, Moscow, Russia  
**IAWS-2009: Forests as a Renewable Source of Vital Values for a Changing World**  
IUFRO 5.00.00

26 June, Boise, Idaho, United States  
**Society of Wood Science and Technology 2009 International Annual Convention**  
IUFRO 5.00.00

4-6 August, Starkville, Mississippi, United States  
**Int'l Conference on Woody Biomass Utilization**  
IUFRO 5.00.00

28 September, South Lake Tahoe, Nevada, United States  
**International Conference on Wood Adhesives 2009**  
IUFRO 5.00.00, 5.04.07, USDA FS et al.

5-10 October, Walailak University, Nakhon Si Thammarat, Thailand  
**1st Int'l Advanced Training Program on Wood-Based Panels Technology for Professionals in South-East Asia**, IUFRO 5.05.00, International Wood Academy of Hamburg, Germany

26-30 October, Cala Millor, Mallorca, Spain  
**Eurodendro2009: Challenges, Developments, Advances**  
IUFRO 5.01.07

28-30 November, Kunming, China  
**Wood Culture Symposium – China 2009 & YunNan Wood Culture Exhibition**  
IUFRO 5.10.01

14-17 December, Colombo, Sri Lanka  
**Asia and the Pacific Forest Products Workshop – Green Technology for Climate Change Mitigation and Adaptation**  
IUFRO 5.00.00



# Social, Economic, Information and Policy Sciences - Division 6

*The context of environmental and natural resource politics is changing. More than ever before, governmental actors lack the powers to deliver the required policy results on their own.*

Under the term **new modes of governance**, policy makers are striving for more inclusive and legitimate, better integrated but less intrusive policy means of achieving policy goals. Governance particularly describes those types of political processes in which non-hierarchical modes of guidance, such as persuasion and negotiation, are employed, and public as well as private actors are engaged in policy formulation and implementation. At the 15th International Symposium on Society and Resource Management (ISSRM) a tripartite paper section, co-sponsored by IUFRO Working Party 6.12.02 focused on new modes of governance in forest and environmental policy.

The overall theme of the 15th ISSRM was **Meet Old and New Worlds in Research Planning and Management**. The conference provided a unique opportunity to have a look at these old and new worlds with a focus on the social sciences and resource management. It aimed at enhancing the discussion of methodological traditions in contrast to pragmatic solutions and the exploration of cultural and political influences on planning and decision making processes in all parts of the world.

The meeting of forest law experts in Slovakia focussed on two major issues: Firstly, the **development of modern forest legislation and implementation of forest policy tools** in different countries with special emphasis on the West Balkan countries, and secondly, the **balance between forestry and nature conservation at public and/or private property level** including collisions between regulations in forest laws and environment

related legislation. Special attention was devoted to the problems of forest management in protected areas, considering actual threats such as bark beetle calamities induced by biotope protection forests.

Cities across the world are turning to **urban green space** as important contributors to quality of life and city competitiveness. There has been a recent boom in 'green city' competitions and various scholars have stressed the importance of high quality green environments for attracting talent and money. For urban forestry to be successful, it needs to be strategic and innovative, connecting to the overall challenges dealt with by cities. The 12th **European Forum on Urban Forestry** (EFUF) focused on these and related issues. Host was Arnhem, recently awarded the accolade of 'Greenest City of the Netherlands'.

## Meetings

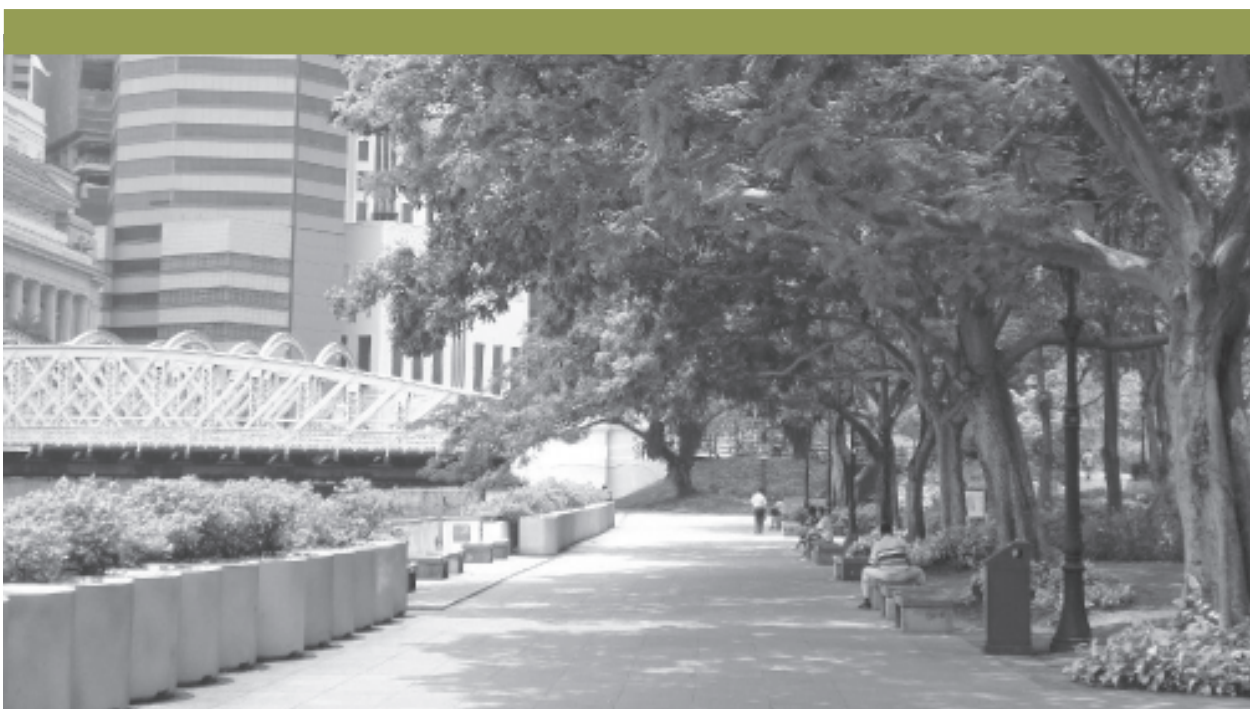
13-15 May, Zvolen, Slovakia  
**11th International Symposium on Legal Aspects of European Forest Sustainable Development**  
IUFRO 6.13.00

27-30 May, Arnhem, Netherlands  
**12th European Forum on Urban Forestry**  
IUFRO 6.14.00

2-5 June, Yoshkar-Ola, Russia  
**International Cooperation in Forest Sector: Balancing Education, Science and Industry**  
IUFRO 6.14.00

## Photo:

Trees providing shadow, Singapore  
by Cecil Konijnendijk (Division 6)



15-18 June, Umea, Sweden  
**2nd Gender and Forestry Conference:  
Making a Difference in Theory and Practice**  
IUFRO 6.08.01

21-24 June, Nancy, France  
**Int'l Symposium: Change in Governance as  
Collective Learning Process: Management,  
Politics and Ethics in Forestry**  
IUFRO 6.05.00, 6.12.00

5-8 July, Vienna, Austria  
**15th International Symposium on Society  
and Resource Management: Meet Old and  
New Worlds in Research, Planning, and  
Management**  
IUFRO 6.01.00

6-7 July, Vienna, Austria  
**Session on New Modes of Governance in  
Environmental and Natural Resource Policy at ISSRM**  
IUFRO 6.12.02

4-8 August, Copenhagen, Denmark  
**First World Congress of Environmental History 2009**  
IUFRO 6.07.00

11-14 August, Curitiba, Brazil  
**VII Congreso Latinoamericano de Derecho Forestal y  
Ambiental**  
IUFRO 6.13.01

17-20 August, Mount Gambier, Australia  
**Meeting Multiple Demands for Forest Information:  
New Technologies in Forest Data Gathering**  
IUFRO 4.01.00, 4.02.03, 6.15.00, 3.01.00

19-21 August, Nanjing, China  
**First Global Forum on Ecological Economics in  
Forestry: Building a Harmonious Future for Human  
Well-being**  
IUFRO 6.11.05

6-10 October, Vancouver, Bc, Canada  
**Gender Education in Curricula of Natural Resources  
Management - Implicit and Explicit!**  
IUFRO 6.08.02

## Publications

Ghulijanyan, A.; Herbst, P.; Sargsyan, N. [eds.] 2008. **Legal Aspects of European Forest Sustainable Development**. Proceedings of the 9th International Symposium on Legal Aspects of European Sustainable Development. Forest Research Experimental Center, MoNP, Yerevan.

### **Management of Recreation and Nature Based Tourism in European Forests**

Ulrike Pröbstl, Veronika Wirth, Birgit H.M. Elands, Simon Bell (Eds.)

### **New Modes of Governance in Forest and Environmental Policy: Conceptual Innovations and Empirical Insights**

Karl Hogl, Deputy Coordinator of IUFRO 6.12.02 Forest Governance, InFER/BOKU Vienna; Eva Kvarda, Ralf Nordbeck, InFER/BOKU Vienna; Michael Pregernig, Institute of Forest and Environmental Policy, Freiburg

### **Urban Forestry: Working Together for Green City Values**

By Cecil C. Konijnendijk, Coordinator, IUFRO 6.14.00

### **Forest Law Experts Meeting in the Heart of Europe**

By Rastislav Sulek, Vice-rector of the Technical University Zvolen, and Peter Herbst, Coordinator of IUFRO 6.13.00



**Photo:**  
At the forest and insects meeting in Jackson Hole, Wyoming, USA; by Ron Billings (Texas Forest Service)

## Forest Health - Division 7

*Research Group 7.01.00 is concerned with impacts of air pollution and climate change on forest ecosystems. Only healthy forests can provide many important services upon which we rely – air quality and water cycle regulation; biodiversity and soil protection; carbon sequestration and mitigation of climate change; and social and cultural value.*

The health of global forests has long been threatened by insect pests and diseases that accidentally moved to new areas. More recently, climate change has come to represent one of the greatest threats to forest and tree health. **Climate change and air pollution** are posing new threats to our forests and changing their ability to tolerate the many factors that stress these fragile ecosystems. Historically, climatic extremes, air pollution, insects and disease have been the main factors adversely affecting forest health. Understanding how these agents of stress are affected by, and respond to climatic change will be fundamental in our efforts to mitigate the impacts of a changing environment.

In 2009, RG 7.01 strengthened research and communication by cooperating with several institutions (COST, Sylva-World, Istanbul University, Chinese Academy of Forestry, International Society of Environmental Botanists) in organizing events.

Strategic partnerships and co-operation were promoted by establishing a new Working Party which will raise awareness on the multiple, interactive effects of air pollution (ozone, nitrogen oxides, excess nitrogen deposition) and climate change (increase in CO<sub>2</sub>, temperature, extreme climatic events) on forest ecosystems and the services they provide. The new Unit 7.01.07 deals with **Multiple Stressors**.

*Research Group 7.02.00 Pathology was involved in several meetings throughout the year dealing with issues ranging from the recognition, identification and management of pests and diseases of tropical plantation and forest trees to viruses of forest and urban trees.*

At the **IUFRO International Forest Biosecurity Conference** held in New Zealand in cooperation with Divisions 1 (Silviculture), and 8 (Forest Environment) a forum for forest entomologists, pathologists, vegetation management scientists, forest managers and policy makers, met to share knowledge and address the rapidly growing numbers of pests and pathogens that are appearing on forest land worldwide. One conclusion was that biosecurity focus needs to shift from pest risk analysis to pathway analysis – *i.e.* less emphasis on the pests, and more emphasis on how they move around and on associated mitigation options.

**During 2009 an issue that dominated discussions at virtually every working group meeting in RG 7.03.00 Entomology was the problem of biological invasions.**

Numbers of **non-native forest pest species** continue to increase in virtually every part of the world. Many of these non-native species have caused considerable damage to forest resources in natural, plantation and urban forest settings. While the bulk of this problem can be attributed to inadvertent invasion pathways created as a byproduct of global trade and travel, there are several examples of forest insect range expansions caused by climatic changes.

A new Working Party, 7.03.14 **Entomological Research in Mediterranean Forest Ecosystems** was formed.

## Meetings

16-20 March, Rotorua, New Zealand  
**International Forest Biosecurity Conference**  
IUFRO 7.02.00, 7.03.00, 1.01.04, 8.02.02

11-16 May, Isparta, Turkey  
**Foliage, Shoot and Stem Diseases**  
IUFRO 7.02.02

13 May, Berlin, Germany  
**Viruses of Forest and Urban Trees**  
IUFRO 7.02.04

13 July, Hilo, Hi, United States  
**Disease and Insects in Forest Nurseries**  
IUFRO 7.03.04

20-23 July, Nanjing, China  
**International Symposium on Pine Wilt Disease**  
IUFRO 7.02.10

9-14 August, Serra Do Cipó, Brazil  
**Symposium on the Biology of Gall Inducing Arthropods**  
IUFRO 7.03.02

30 August - 2 September, Cortina D'amezzo, Italy  
**Tree Resistance to Insects**  
IUFRO 7.03.11

27 September - 2 October, Jackson Hole, WY, United States  
**Forest Insects and Environmental Change**  
IUFRO 7.03.05, 7.03.07

## Publications

Schaub, M., Matyssek, R., Wieser, G., Paoletti, E. 2008. **Air Pollution and Climate Change at Contrasting Altitude and Latitude - Scientific summary.** 23rd IUFRO Conference for Specialists in Air Pollution and Climate Change Effects on Forest Ecosystems, 7-12 September 2008, Murten, Switzerland. 7 pp.

Schaub, M., Kaennel Dobbertin, M., Steiner, D. (Eds) 2008. **Air Pollution and Climate Change at Contrasting Altitude and Latitude. 23rd IUFRO Conference for Specialists in Air Pollution and Climate Change Effects on Forest Ecosystems.** Murten, Switzerland, 7-12 Sept 2008. Abstracts. Birmensdorf, Swiss Federal Research Institute WSL. 162 pp.

Paoletti, E., Grulke, E., Bytnerowicz, A. (2009) **More harmful climate change impacts in polluted forests – A review.** Proceedings of the XIII World Forestry Congress, 18 - 23 October 2009, Buenos Aires, Argentina, 12 pp.

Schaub, M., Matyssek, R., Wieser, G. **Preface** to the special section of the IUFRO conference on air pollution and climate change effects on forest ecosystems. *Environmental Pollution*. doi:10.1016/j.envpol.2009.11.025

Paoletti, E., Schaub, M., Matyssek, R., Wieser, G., Augustaitis, A., Bastrup-Birk, A. M., Bytnerowicz, A., Günthardt-Goerg, M. S., Müller-Starck, G., Serengil, Y. **Advances of air pollution science: from forest decline to multiple-stress effects on forest ecosystem services.** *Environmental Pollution* (accepted).

Matyssek, R., Schaub, M., Wieser, G. **Air Pollution and Climate Change Effects on Forest Ecosystems – New Evidence.** Special issue in *European Journal of Forest Research* (accepted).

Proceedings of the 7.02.09 meeting held August 26–31, 2007, Monterey, California, entitled **Phytophthoras in Forests and Natural Ecosystems**, and available as a General Technical Report PSW-GTR-221, USDA Forest Service.

**Eight papers** of a 7.02.11 session held in Australia in 2005 in collaboration with unit 7.02.02 were published in the scientific journal *Botany*, vol. 87 (1): 1-63.(2009).

### Photo:

At the meeting on Tree Resistance to Insects; by Daniel Herms (IUFRO Division 7)



## Forest Environment - Division 8

*Invasive alien plant species, forest snow cover and storm damage in forests were among the main topics of interest in 2009.*

Alien invasive plants affect native ecosystems by altering hydrology, fire regimes, and nutrient cycling apart from competing with native species, reducing species richness, changing structure and composition of communities. This has impacts on flora, dependent fauna, soil, microbial components and thus ecosystem integrity and ecology. A conference on **Plant Invasion and Forest Ecology** held in India looked at concerns and solutions to this problem.

The importance of **models of snow processes** was discussed at a symposium in Canada. Such models are required for a wide range of applications in hydrological forecasting, avalanche risk assessment and climate modelling. The scientific background of this discussion was defined by the role of alpine snow as a water resource and touristic necessity and its interaction with mountain forest as an important part of the landscape and protection from snow avalanches.

**Storm damage in forests** causes economic losses and encourages different types of consequential damage in forests. Changes of intensity, frequency and seasonal distribution of storms and gales may challenge stability advantages of deciduous trees (leafless in winter), increase the risks of conifer tree farming as well as require a revision of established silvicultural strategies and long-term productive times. The 2nd International Conference on Wind Effects responded to this interest by forestry and forest science to update previous strategies to reduce the storm risk of forests.

### Meetings

16-18 March, Chandigarh, India  
**Plant Invasion and Forest Ecology: Concerns and Solutions**  
IUFRO 8.02.04, 4.02.02, SPDC

16-20 March, Rotorua, New Zealand  
**International Forest Biosecurity Conference**  
IUFRO 8.02.02, 7.02.00, 7.03.00, 1.01.04

19-29 July, Montreal, Canada  
**Symposium on Mountain and Forest Snow Cover: Climatology, Interactions and Processes - MOCA09**  
IUFRO 8.03.02

3-9 August, Novosibirsk, Russia  
**2nd International Conference on Conservation of Forest Genetic Resources in Siberia (CFGRS-2009)**  
IUFRO 8.01.07, 2.02.00

31 August - 3 September, Halmstad, Sweden  
**Spruce in the Context of Global Change**  
IUFRO 8.00.00, 1.00.00, 1.01.08, 4.00.00

13-16 October, Freiburg, Germany  
**2nd International Conference on Wind Effects**  
IUFRO 8.01.11



**Photo:** Winter landscape in Austria;  
by Gerda Wolfrum, IUFRO Headquarters

## Improving the Lives of People in Forests - Task Force

Task Force members reported that the Forest Peoples Program, with a number of indigenous peoples spokespersons, was strongly present at the **Convention on Biological Diversity meeting** in Montreal in November 2009.

### Publications

**Facilitating Forests of Learning: Enabling an Adaptive Collaborative Approach in Community Forest User Groups**, a Guidebook (CIFOR, Bogor, 2009), by Cynthia McDougall, Bishnu Hari Pandit, Mani Ram Banjade, Krishna Prasad Paudel, Hemant Ojha, Manik Maharjan, Sushila Rana, Tara Bhattarai and Sushma Dangol.

**Forests for People: Community Rights and Forest Tenure Reform**. Edited by Anne Larson, Deborah Barry, Ganga Ram Dahal and Carol J. Pierce Colfer. Earthscan/CIFOR, London, 2009.



Photos on pages 14 and 15:

Above: Landscape in Kenia, by Peter Taraszewicz

At the FORNESSA meeting in Malawi, by Randy McCracken

## Illegal Logging and FLEGT - Task Force

Members of the TF met at the Chatham House **Illegal Logging Stakeholder Meeting** in January 2009.

The hot topic in global environmental negotiations were the preparations for the Copenhagen climate summit. For forest policy interests, the question of what the REDD-tools would eventually look like was most interesting there. The discussions around REDD made it clear that a successful implementation of REDD would require a solution for the issues which are also relevant for Illegal Logging. The Task Force was invited to get involved in the new Chatham House-RRI Dialogue on **Forest Governance and Climate Change**, which started off with a meeting in London on July 8, 2009.

The TF was also represented at an MCPFE meeting on **EU-FLEGT issues** (VPAs & EU *Due diligence*-directive) in Romania in October 2009.

In addition, the TF developed a **course** in co-operation with British universities aimed at decision-makers/managers from developing countries. The course shall be delivered for the first time in the UK early 2010. The programme is aimed at providing an overview on the **current state of play in relation to IL, FLEGT and REDD**.

## Traditional Forest Knowledge - Task Force

The main activity of the Task Force in 2009 was the International Conference on **Forest Biodiversity, Traditional Forest-related Knowledge and Sustainable Forest Management in Eastern Europe, Northern and Central Asia** in Bishkek, Kyrgyzstan on 28-30 June 2009. The conference was jointly organized with the Global Forest Coalition, the NGO BIOM, with support from IUFRO's Special Programme for Developing Countries, the Netherlands Federal Ministry of Foreign Affairs and Korean Forestry Research Institute. The conference highlighted the importance of TFRK towards achieving the Millennium Development Goals and sustainable forest management, and encouraging further development towards incorporating TFRK in models of sustainable forest management practices.

### Kunming Conference Report

International Conference on Sustainable Forest Management and Poverty Alleviation: Roles of Traditional Forest-related Knowledge, 17-20 December 2007; Kunming, China

### IUFRO World Series 23:

#### Traditional Forest-Related Knowledge and Sustainable Forest Management in Africa: Conference Papers

Conference held in Accra, Ghana, from 15-17 October 2008, jointly organized by the International Union of Forest Research Organizations (IUFRO) Task Force on Traditional Forest Knowledge, the IUFRO Special Programme for Developing Countries (IUFRO-SPDC), and the Council for Scientific and Industrial Research of Ghana (CSIR). John A. Parrotta, Alfred Oteng-Yeboah, Joseph Cobbinah (editors). Accra, IUFRO, 2009 – 213 p. – (IUFRO World Series Vol. 23).

ISSN 1016-3263 ; ISBN 978-3-901347-81-8

## Forests and Human Health - Task Force

Together with the IUFRO Task Forces on *Traditional Forest Knowledge* and *Improving the Lives of People in Forests*, the Task Force on *Forests and Human Health* organized a side event entitled **Forests, Human Health and Wellbeing: Findings of IUFRO's Recent Science Initiatives** at the World Forestry Congress in Buenos Aires, Argentina.

At the International Conference on **Health and Recreation in Forest and Landscape**, at WSL (Birmensdorf, Switzerland) in April 2009, the first steps were taken to draft guidelines for a Health Impact Assessment of forest-related projects and policies (F-HIA). HIA is a practical approach used to judge the potential health effects of a policy, programme or project. The HIA approach is strongly supported by WHO because it provides a foundation for improved health and well-being of people likely to be affected by such proposals. A few countries use HIA more or less regularly as part of certain planning processes; others have used it on a voluntary basis, but most countries do not apply it.



## The Global Forest Information Service - GFIS

*The Global Forest Information Service - <http://www.gfis.net> - as an internet portal, provides a single entry point to disseminate and share a wide range of forest-related data and information. The CPF joint initiative developed common information exchange standards and is building capacity and enhancing partnerships among providers and users of forestry information.*

Through the GFIS gateway partners can achieve more visibility and recognition of information. It can also facilitate to increase the number of potential information users and improve possibilities for networking and cooperation with other forest-related organizations.

The GFIS gateway got **more than 50 new information provider partners** during the year and had over 170 partners from around the world at the end of 2009. There are over 60 new information headings displayed via the GFIS entry page daily. The gateway is being developed constantly in order to improve information provider partners' possibilities to promote their information resources. For the moment the gateway includes a search tool and browsing capability for the latest news, events, publications and job opportunities. The Finnish Forest Research Institute (Metla) is responsible for the technical development and maintenance of the GFIS gateway.

In order to further expand GFIS all over the world the GFIS gateway and the partnership concept were introduced to potential partners in **several global and regional seminars and workshops** by the Coordinator and the Regional Coordinator for Asia and Russia. A GFIS training workshop was held in UK, and GFIS side events were held at the 2nd World Congress of Agroforestry in Nairobi, Kenya and the XIII World Forestry Congress 2009 in Buenos Aires, Argentina in 2009.

### Release of GFIS Strategic Plan

This document provides conceptual information regarding GFIS operations and development.

### GFIS Blog

Forest professionals around the world share their ideas and experience on matters such as forest information management. The blog also contains GFIS workshop material. You are welcome to comment or write posts.

### GFIS in Twitter

In Twitter you can keep up to date with what's going on in GFIS.

### GFIS in Facebook

If you have joined in Facebook, you are also warmly welcome to join in a GFIS group.

### RSS Feeds

In spite of the social media RSS feeds remain the principal way of sharing information in GFIS.

## Special Programme for Developing Countries - IUFRO-SPDC

*The major focus of work in 2009 was on support to the Forestry Research Network of Sub-Saharan Africa (FORNESSA).*

### FORNESSA Networking Meeting

With the aim to strengthen forest research cooperation within Africa and to further enhance the ongoing reform process of FORNESSA, a one-week meeting event for FORNESSA member institutions was organized in Blantyre, Malawi from 22-26 June 2009. IUFRO-SPDC assisted in preparations and facilitation of the meeting including travel arrangements, fund management, input to the agenda and moderation during the workshop sessions. Local logistics were provided by the Forest Research Institute of Malawi (FRIM).

### FORNESSA Information Service (FORNIS)

In view of the need to enhance the exchange of scientific information on forest and trees in Africa, FORNESSA has decided to establish the FORNESSA Information Service (FORNIS). This new internet-based service will be central to FORNESSA operations, particularly in sharing scientific publications and data as well as communicating research results to policy makers, forest stakeholders and society at large.

Information managers from 6 FORNESSA institutions joined the networking week and worked out the details of FORNIS. The new service is supported by GFIS and IUFRO-SPDC based on funding secured from ITTO and in-kind contributions by the US Forest Service through expertise and technical backstopping services.

The newly established **FORNESSA thematic group on Forests and Climate Change** played a central role in collating the relevant information for the GFEP-FORNESSA **Policy Brief on Forests and Climate Change in Africa**.



### Scientist Assistance Programme

In 2009, IUFRO-SPDC through its donors provided support to 144 forest scientists from developing countries for participation in 8 conferences and scientific meetings.

### Training Workshops

Following the Training Workshop on **Preparing and Writing Research Proposals** held at the Forest Science Institute in Vietnam in 2008, another workshop of this kind was organized in 2009 by the Institute of Forestry of the Tribhuvan University, Nepal, the ComForM Project (Community-based Natural Forest and Tree Management in the Himalaya Project), University of Copenhagen, Denmark and IUFRO-SPDC. The two-and-a-half day event took place at the Orchid Resort in Hetauda, Nepal.



**Planning and Training Workshops on Forest Pest and Disease Management** were held on 24 November 2009 to 1 December 2009 in Beijing, China, organized by IUFRO-SPDC in collaboration with the Chinese Academy of Forestry. During the workshops, future cooperation among Northeast Asian countries regarding capacity building in the field of forest information, forest protection, climate change, etc. was discussed.

During 2009 a total of two training workshops on **science-policy interfacing** were implemented in conjunction with the Scientific Meeting on *Plant Invasion and Forest Ecology: Concerns and Solutions* (IUFRO Working Parties 8.02.04 and 4.02.02) in Chandigarh, India, and the XIII World Forestry Congress in Buenos Aires, Argentina.

### Keep Asia Green Project

This scientific publication initiative led by the IUFRO President and coordinated by IUFRO-SPDC in cooperation with AKECOP (SNU, Korea) continued in Phase IV with work in West and Central Asia, involving five countries, namely Iran and Turkey in West Asia as well as Kazakhstan, Kyrgyzstan and Uzbekistan in Central Asia. The lead authors met twice (Bangkok, March 2009 and Bishkek, September 2009) to discuss the country contributions and jointly elaborated the structure and content of the synthesis paper. *Keep Asia Green - West and Central Asia* was published as IUFRO World Series Volume 20-IV.

### Donors and Contributors

Generous financial contributions for IUFRO-SPDC's capacity building activities have been received in 2009 from the Finnish Ministry of Foreign Affairs, the Korea Forest Research Institute, the United States Forest Service and the Austrian Ministry of Agriculture, Forestry, Environment and Water Management. In addition, a special-purpose project in support of research networking in Africa and development of a policy brief on adaptation of forests to climate change in Africa has been supported by BMZ/GTZ of Germany. As in the previous years Yuhan Kimberly of Korea provided basic funding for implementing the Keep Asia Green Initiative. The International Tropical Timber Organization (ITTO) assisted with a grant to further develop forest information services in Africa.

Photo: GFEP on International Forest Regime  
by Tarun Bathija, IUFRO Headquarters

## CPF Global Forest Experts Panels - GFEP

*The year 2009 was a crucial one for the Global Forest Expert Panels (GFEP) initiative led by IUFRO. The first global assessment report addressing adaptation of forests and people to climate change was published in April 2009. It received broad recognition by policy makers and the media, demonstrating the effectiveness of GFEP as a global scientific advisory mechanism. In autumn 2009 the foundations were laid for a new assessment report on the international forest regime.*

GFEP is an initiative of the Collaborative Partnership on Forests (CPF) and is led and coordinated by IUFRO. It aims to support more informed decision-making at the global level by providing objective and independent scientific assessments of key issues. The assessments are carried out by thematic Global Forest Expert Panels uniting leading scientists. At the IUFRO Headquarters, Deputy Executive Director Alexander Buck serves as GFEP Coordinator.

The first assessment report entitled **Adaptation of Forests and People to Climate Change** (IUFRO World Series 22) and a policy brief **Making Forests Fit for Climate Change** (available for download at the IUFRO website) were published in April 2009. The report was prepared by an Expert Panel of 35 leading scientists in the fields of forestry and climate change, chaired by IUFRO's Immediate Past President Professor Risto Seppälä. The assessment report summarizes the scientific knowledge regarding the current and projected future impacts of climate change on forests and people globally along with options for adaptation. The report has since become a key source of information for policy makers and their advisors, and a key reference for scientific and technical publications dealing with forest adaptation. Key findings of the report also received broad coverage by news media around the globe.

The particular impacts of climate change and the appropriate adaptive responses are location-specific, and Africa is expected to face particularly high impacts from climate change. Therefore, GFEP and IUFRO-SPDC jointly initiated in autumn 2009 the preparation of a regional policy brief **Making African Forests Fit for Climate Change** in collaboration with the thematic group *Forest and Climate Change* of the Forestry Research Network for Sub-Saharan Africa (FORNESSA). By complementing and refining the information contained in the global assessment report, this regional policy brief aims to contribute to the development of effective adaptation strategies in Africa and facilitate related international efforts.

Following consultation with policy makers, donors and stakeholders, GFEP has initiated a new global scientific assessment on the theme **International Forest Regime** in autumn 2009. An extensive body of knowledge exists in political science about international regimes and global environmental governance. However, a comprehensive scientific assessment of the international forest regime has yet to be carried out. The new assessment on the International Forest Regime aims to fill this gap. The assessment report is authored by an international Expert Panel of leading political scientists, chaired by Professor Jeremy Rayner (University of Regina, Canada). The assessment will be completed by the end of August 2010. It aims to make a contribution to the International Year of Forests 2011 and to contribute to key international forest-related processes.

## Special Project on World Forests, Society and Environment - IUFRO-WFSE

*The aim of WFSE is to enrich the research activities and discussions with innovative, critical scientific analysis from a global and/or regional perspective. The tasks of the project are implemented by a wide and open collaborative network coached by a Steering Committee of ten international partner organizations. In 2009 the Special Project IUFRO-WFSE produced publications and documents, participated in international events, planned and coordinated the activities, developed collaboration with other IUFRO working parties, promoted discussions on topics related to international processes and carried out capacity building activities.*

### Future of Forests – Responding to Global Changes

A decisive step forward in composing the book of 26 chapters was achieved in 2009. The chapters were thoroughly commented in an Editorial Workshop organized at van Thünen Institute (vTI) premises in Hamburg, Germany, in June 2009. Many articles were completed and even sent to external reviewers. The publication of the book is scheduled for June 2010.

**Policy Brief on Latin America:** *Bosques de América Latina que beneficien a la gente y sustenten la naturaleza* was a WFSE work produced by seven authors and supported by CATIE, METLA and NRC Canada. The Spanish version was printed in January 2009 and its English translation in March 2009. It was launched at the IUFRO side event at the eighth session of UNFF in April 2009 in New York. It has also been disseminated in several international meetings.

**Policy Brief on Africa:** *Making Sub-Saharan African Forests Work for People and Nature* was developed as a joint activity of WFSE, ICRAF and CIFOR. It was printed in August 2009 and launched at the World Agroforestry Congress organized at ICRAF headquarters in Nairobi, Kenya, in August 2009. Dissemination is going on.

The **Policy Brief on Europe** and the **WFSE brochure** were reprinted in 2009 and disseminated at various international meetings.

The **WFSE web page** was updated in 2009 on a more frequent basis and all publications and descriptions of main activities are displayed on this Internet page.

A **Steering Committee meeting** of WFSE was organized in June 2009 in conjunction with the editorial meeting held in Hamburg (see above). The main topic of the meeting was a total revision and reinforcement of the work for composing the new book under preparation. Also some organizational issues of WFSE activities were discussed.

**Joint activities with GFIS** continued. GFIS provided active collaboration to WFSE in developing the Wikimedia Internet tool for facilitating the collective composition of the book chapters.

**Joint activities with IUFRO-SPDC:** WFSE supported the pre-Congress Workshop organized by SPDC in Buenos Aires on Science and Policy Interface with lectures. The Workshop was organized in the framework of the World Forestry Congress 2009 held in October in Argentina.

**Capacity building:** WFSE guided two months practice of Ms. Yiyang Zhang, a Chinese student at the University of Helsinki (May and December 2009).

**Photo:** IUFRO-WFSE side event at WFC in Argentina  
Courtesy of IUFRO-WFSE



Jung-Hwan Park,  
Korea Forest Research Institute,  
Chair, IUFRO Congress Organizing Committee

John Parrotta,  
U.S. Forest Service  
Chair, IUFRO Congress Scientific Committee



## Outlook

by Jung-Hwan Park and John Parrotta

Many IUFRO members and friends who attended the 22<sup>nd</sup> IUFRO Congress in Brisbane, Australia in 2005 may still remember the dynamic performance during the closing ceremony staged by Korea, the host country for the 23<sup>rd</sup> IUFRO Congress. With the 2010 Congress now only a few weeks away, this spectacular and emotional experience still resonates within many of us. The Congress Organizing Committee (COC), formed in the Korea Forest Research Institute (KFRI), has devoted itself to making the 2010 Congress, **Forests for the Future: Sustaining Society and the Environment**, one of the most memorable and successful congresses in IUFRO's distinguished 118-year-long history.

The Congress Scientific Committee (CSC) received and reviewed more than 3,100 abstracts submitted for 150 technical and 15 subplenary sessions. The Congress scientific program will cover a broad range of topics and issues related to **nine Congress themes**: Forests and Climate Change; Biodiversity Conservation and Sustainable Use of Forest Resources; Forest Environmental Services; Asia's Forests for the Future; Forest Products and Production Processes for a Greener Future; Emerging Technologies in the Forest Sector; Frontiers in Forest and Tree Health; Forests, Communities and Cultures; and Forests, Human Health and Environmental Security. Five plenary keynote speakers have confirmed their participation, including the 2009 Nobel Prize Laureate in Economic Science, Prof. Elinor Ostrom from Indiana University, USA.

The COC has developed a variety of programs that will make our Congress an ideal forum to share and exchange experiences and information on recent developments in forest-related science and technology, including Korea's most significant achievements in forest management. Information on the Congress is being actively disseminated to raise public awareness of the significance of forests and forest science. Frequently updated information on the Congress can be found on the Congress website [www.iufro2010.com](http://www.iufro2010.com), which also

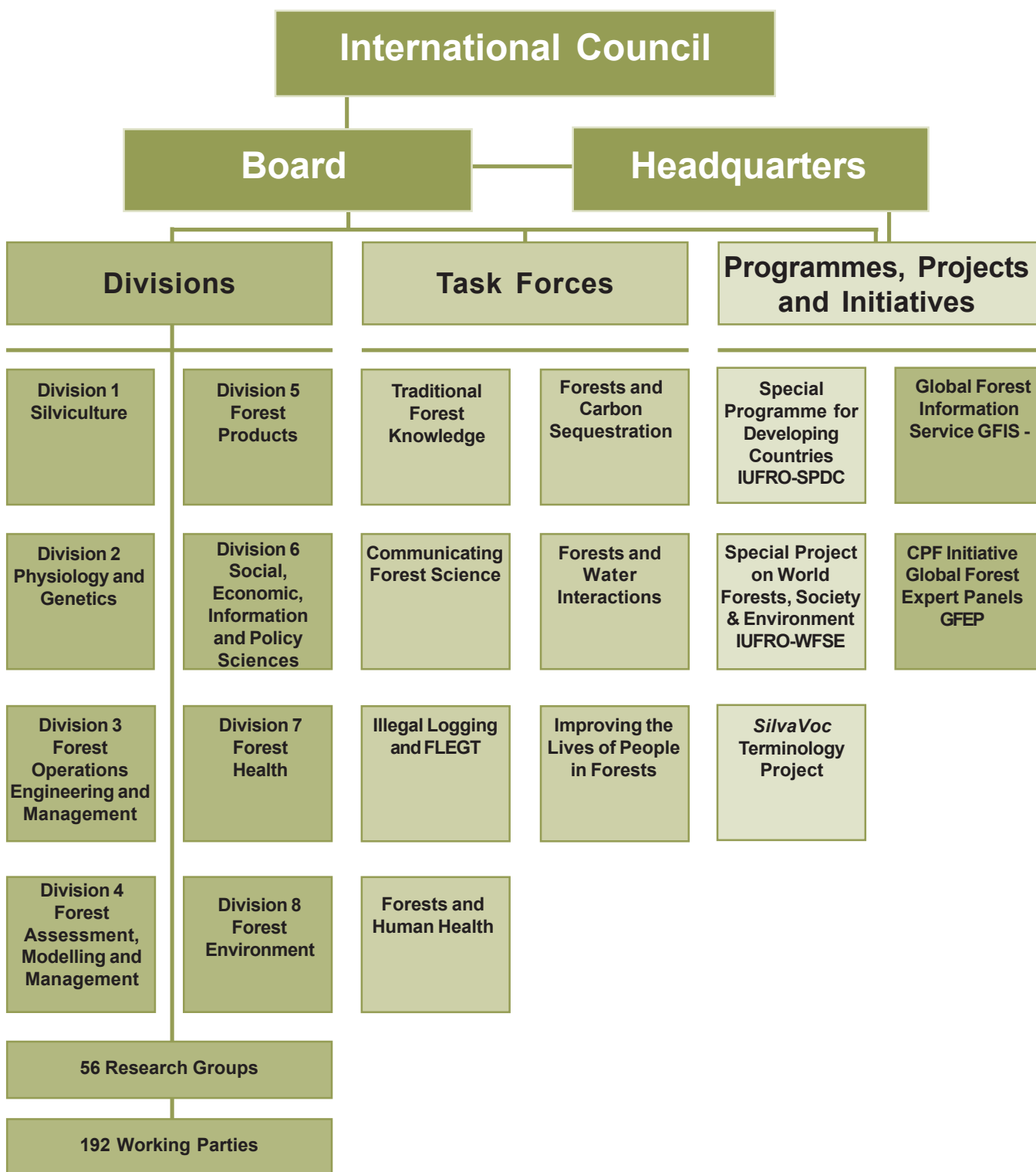
includes on-line registration and information for prospective participants in the Congress Trade Exhibition, which has already attracted a number of institutes, agencies and international organizations.

Through its **Scientist Assistance Program (SAP)**, the COC has allocated funds to support more than 120 scientists from developing countries to participate in the Congress. Additional 40 scientists will be supported by international donors representing the USA, Finland and others. The COC is now trying to secure more funds from other donors to expand the Scientist Assistance Program. In addition, KFRI will be one of main donors providing voluntary contributions to IUFRO's Special Programme for Developing Countries (IUFRO-SPDC) for Pre-Congress Training Workshops which will be held during the week prior to the Congress.

All Congress registrants are invited to participate in the **In-Congress tour program** scheduled for 26 August 2010. A total of eight tours will provide delegates and accompanying persons with an overview of Korea's forests, forestry and wood industries, and local tourist attractions. **Post-Congress tour programs** will enable delegates to experience diverse forest ecosystems, management practices, cultures and history in Korea, China, Japan and Mongolia. Cultural programs will be available for accompanying persons during the Congress.

Throughout its history, wise management of forest and water resources has been a priority of every Korean Dynasty. However, during the turbulent era of the first half of the 20<sup>th</sup> century, including the Korean War, severe deforestation occurred due to widespread illegal logging and over-harvesting. With the development of a systematic legal framework in parallel with Korea's Economic Development Plans since the 1960s, Korea has devoted itself to re-greening the country. Forty years later, Korea is recognized worldwide as the only country that has succeeded in rehabilitating and restoring its forests in a single generation – a remarkable achievement. We would like to share our valuable experiences with IUFRO members and other delegates during the Congress, and introduce the flourishing culture that runs deep in Korea to all of our distinguished guests. **We hope to meet all of you in Seoul soon!**

# IUFRO Organizational Information, Structure and Statistics



## Geographical Distribution of IUFRO Officeholders, Member Organizations, Meetings:

Region	Officeholders	Member Organizations	Meetings
Europe	289	233	26
North America	179	135	13
Latin America	45	56	4
Africa	25	55	1
Asia	133	129	13
Oceania	45	30	2
<b>Total</b>	<b>716</b>	<b>638</b>	<b>59</b>

# Finances

Note: All figures in the tables are given in EUR.




IUFRO Balance - as per 31 December 2009 in Euro			
<b>ASSETS</b>			<b>EQUITY and LIABILITIES</b>
<b>A. Fixed assets</b>		<b>TOTAL</b>	<b>A. Equity</b>
			<b>TOTAL</b>
I. Intangible assets	403		Capital as per 31/12/2008
II. Tangible assets	<u>6,533</u>		Profit 2009
<i>Total</i>		6,936	<i>Total</i>
			712,392
<b>B. Current assets</b>			<b>B. Accruals</b>
			74,100
I. Accounts receivable	64,430		
II. Other receivables	41,315		<b>C. Liabilities from contributions</b>
III. Trade securities	380,620		<b>not yet used</b>
IV. Cash on hand and in banks	<u>767,913</u>		398,831
<i>Total</i>		1,254,278	<b>D. Liabilities</b>
			76,152
<b>C. Prepaid expenses</b>		1,521	<b>E. Deferred Income</b>
			1,260
<b>TOTAL ASSETS</b>		<b>1,262,735</b>	<b>TOTAL LIABILITIES</b>
			<b>1,262,735</b>

IUFRO International Union of Forest Research Organizations - UNION	
Profit and Loss - Overview 31 December 2009 in EURO	
<b>Capital 31 December 2008</b>	<b>644,621</b>
<b>INCOME 2009:</b>	
Membership Fees	242,971
Publications	2,233
Donor contributions for budget year 2009	1,320,126
Other income / refunds	3,912
Interest (bank)	5,667
	1,574,909
<b>EXPENDITURE 2009</b>	
Salaries and contracts	-605,137
Contributions for third organizations	-126,532
Office equipment and maintenance	-21,045
Printing, postage and PR activities	-126,131
Travel	-101,058
Organization of meetings, travel support, SAP	-442,473
Legal expenses, accounting	-54,720
Equipment, rent utilities, insurances	-26,558
Annual result of financial assets	-32,341
Bank charges, currency differences	-28,295
Others	-7,530
	-1,507,138
Profit/Loss for the year 2009	67,771
<b>Capital 31 December 2009</b>	<b>712,392</b>

# Sponsorships (Grants and In-kind Contributions to IUFRO in 2009)

IUFRO is most grateful to all our donors for their generous contributions!

## Sponsor categories:

	<b>GOLD</b> -	EUR 100,000 and above
	<b>SILVER</b> -	from EUR 50,000 to 99,999
	<b>BRONZE</b> -	from EUR 25,000 to 49,999

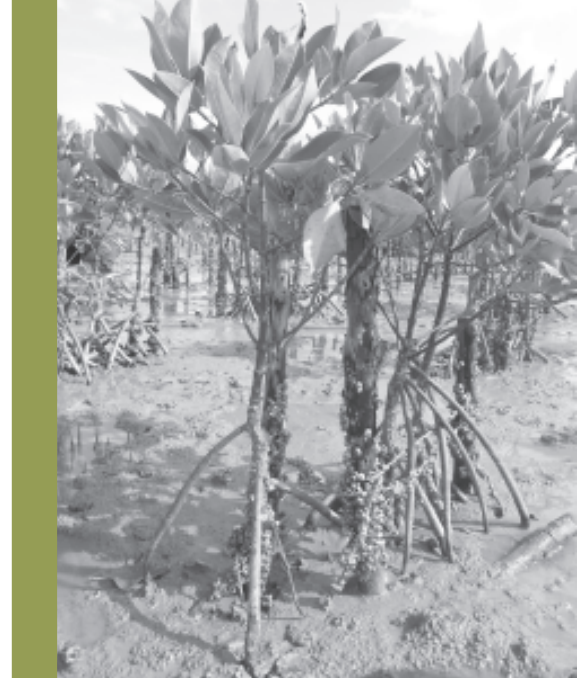


Photo: Mangroves in Malaysia, by A Buck, IUFRO HQ

<b>DONORS</b>	<b>SPDC</b> <i>in EUR</i>	<b>GFIS</b> <i>in EUR</i>	<b>WFSE</b> <i>in EUR</i>	<b>GFEP</b> <i>in EUR</i>	<b>Secretariat</b> <i>in EUR</i>	<b>Other activities</b> <sup>2</sup> <i>in EUR</i>	<b>In-kind contributions</b> <sup>3</sup> <i>in EUR</i>	<b>TOTAL</b> <i>in EUR</i>
Ministry for Foreign Affairs of Finland	155,000	0	155,000	240,000	0	0	0	<b>550,000</b>
Austrian Government	39,800	0	0	0	284,000	0	124,000	<b>447,800</b>
Korea Forest Research Institute (KFRI)	105,700	30,200	0	0	98,200 <sup>1</sup>	37,800	0	<b>271,900</b>
Finnish Forest Research Institute (METLA)	0	0	0	0	0	0	140,700	<b>140,700</b>
US Forest Service (USA)	41,200	24,100	0	11,600	2,800	10,400	12,000	<b>102,100</b>
Federal Ministry for Economic Cooperation and Development of the Federal Republic of Germany (BMZ)/ German Agency for Technical Cooperation (GTZ)	58,600	0	0	0	0	0	0	<b>58,600</b>
International Tropical Timber Organization (ITTO)	24,900	23,300	0	0	0	0	0	<b>48,200</b>
Christensen Fund (USA)	0	0	0	0	0	0	47,200	<b>47,200</b>
UK Department for International Development (DFID)	0	0	0	40,000	0	0	0	<b>40,000</b>
Swedish International Development Cooperation Agency (SIDA)	0	0	0	34,000	0	0	0	<b>34,000</b>
Yuhan Kimberly (Korea Republic)	23,000	0	0	0	0	0	7,600	<b>30,600</b>
Natural Resources Canada	0	0	0	0	0	0	8,300	<b>8,300</b>

<sup>1</sup> IUFRO President's Office, Korea

<sup>2</sup> Support for conferences, Task Forces or Regional Chapters

<sup>3</sup> These are non-cash contributions such as staff time and office facilities

# New Members in 2009

## Member Organizations

### Canada

*Membership no. 0950.00.00*  
Forest Management Branch  
Department of Energy Mines and Resources  
Government of Yukon  
PO Box 2703  
Whitehorse, Yukon Y1A 2C6

### Colombia

*Membership no. 0956.00.00*  
Pontificia Universidad Javeriana  
Facultad de Ciencias  
Decanatura Academica Facultad de Ciencias  
Carrera 7 # 43-82, Edificio Carlos Ortiz (52) - 5to piso  
Bogotá

### Germany

*Membership no. 0955.00.00*  
International Forestry Students' Association (IFSA)  
IFSA International Secretariat  
Tennenbacherstrasse 4  
79106 Freiburg im Breisgau

### Indonesia

*Membership no. 0428.00.00 (reinstatement)*  
Universitas Gadjah Mada  
Fakultas Kehutanan  
Jl. Agro 1, Bulaksumur  
Yogyakarta 55281

### *Membership no. 0953.00.00*

Pattimura University  
Faculty of Agriculture  
Forestry Department  
Jalan Ir. Putuhena, Kampus Poka  
Ambon, Maluku 97233

### Italy

*Membership no. 0576.00.00 (reinstatement)*  
Consiglio Nazionale delle Ricerche  
Istituto di Genetica Vegetale - Sezione Firenze  
Via Madonna del Piano, 10  
50019 Sesto Fiorentino (Firenze)

### Japan

*Membership no. 0399.00.00 (reinstatement)*  
University of Tokyo  
Graduate School of Agricultural and Life Sciences  
Department of Biomaterial Science  
1-1-1 Yayoi, Bunkyo-ku  
Tokyo 113-8657

### *Membership no. 0954.00.00*

Institute of Statistical Mathematics  
Risk Analysis Research Center (RARC)  
4-6-7 Minami-Azabu, Minato  
Tokyo 106-8569

### Nepal

*Membership no. 0952.00.00*  
Forest Action Nepal  
PO Box 12207  
Kathmandu

### Spain

*Membership no. 0951.00.00*  
Instituto Madrileño de Investigación y Desarrollo Rural,  
Agrario y Alimentario (IMIDRA)  
Ronda de Atocha, 17. 4ª planta  
28012 Madrid

### United Kingdom

*Membership no. 0957.00.00*  
Canopy Access Limited  
Flat 4, 10 Church Walk, Newington Green  
London N16 8QE

## Associated Members

### Algeria

*Membership no. 725*  
Chenchouni Haroun  
Association Scientifique Biologie, Biodiversité et Durabilité  
Département de Biologie  
Faculté des Sciences  
Université El Hadj Lakhdar  
Batna 05000

### Benin

*Membership no. 724*  
Gouwakinnou N. Gerard  
03 BP 1974  
Cotonou

*Membership no. 735*  
Fandohan Adande Belarmain  
03 BP 1974  
Cotonou

### Brazil

*Membership no. 728*  
Lex Engel Vera  
Universidade Estadual Paulista -  
Campus de Botucatu  
Faculdade de Ciências  
Agronomicas  
Fazenda Experimental Lageado  
CP 237  
18603-970 Botucatu

*Membership no. 730*  
Kozovits Alessandra  
Universidade Federal de Ouro  
Preto  
Instituto de Ciências Exatas e  
Biológicas  
DECBI - Ecofisiologia de Plantas  
Nativas





Campus Morro do Cruzeiro  
Ouro Preto, Minas Gerais 35400-00

#### **China**

*Membership no. 732*  
Zhou Yan  
China National Bamboo Research Center  
No. 310, Wenyi Road  
Hangzhou 310012

#### **Colombia**

*Membership no. 738*  
Murillo Trujillo Julián Eduardo  
Departamento del Tolima  
Calle 26, No. 6-06 Barrio Belalcázar  
Ciudad de Ibagué

#### **France**

*Membership no. 736*  
Lieutier Francois  
Université d'Orléans  
Laboratoire de Biologie des Ligneux et des Grandes Cultures  
Rue de Chartres / BP 6759  
45067 Orleans, Cedex 2

#### **Germany**

*Membership no. 729*  
Wullaert Hans  
Essenheimer Strasse 31  
55128 Mainz

#### **India**

*Membership no. 727*  
Sharma S.K.  
24 National Road  
Dehra Dun 248001

#### *Membership no. 734*

Shivanna Honnurappa  
College of Forestry, SIRSI  
Department of Forest Biology  
Karnataka 915 81401

#### **Italy**

*Membership no. 733*  
Morani Arianna  
Via Canton 127  
00144 Roma

#### **Japan**

*Membership no. 731*  
Alam Mahbubul  
Faculty of Agriculture  
Forest Management Laboratory  
Otsu 200 Monobe, Nankoku-shi  
Kochi 783-8502

#### **Kazakhstan**

*Membership no. 726*  
Muddasir Gowhar Mir  
Str. Lenin-3 Off: 4-5  
Semey City 071400

#### **Sweden**

*Membership no. 518 (reinstatement)*  
Prescher Finnvid  
Svenska Skogsplantor AB  
Aabyforsvaegen  
834014 Lagan

#### **Togo**

*Membership no. 737*  
Alaba Pyoabalo  
BP 4437 S/c Alaba Y. Aklesso, STLC  
Lome

## Honours & Awards

### IUFRO Certificate of Appreciation

*The following persons were presented Certificates of Appreciation in 2009 for their valuable contributions to IUFRO activities:*

Alexander **Buck**  
Andreas **Fischlin**  
Peter **Glück**  
John **Innes**  
Hans **Jöbstl**  
Pia **Katila**  
Bastiaan **Louman**  
Alan A. **Lucier**  
Balgis **Osman-Elasha**  
John **Parrotta**  
Geoff **Roberts**  
Risto **Seppälä**  
Valentin **Shalaev**  
Mike **Wingfield**

### Distinguished Service Awards

*In 2009 IUFRO presented Distinguished Service Awards to:*

Markku **Aho**, Finland  
Karel **Vancura**, Czech Republic

## Communication Activities at IUFRO Headquarters

IUFRO introduced a **social media section** on its webpage to open additional channels of communication designed to reach out to new target groups and raise awareness of IUFRO activities and issues. With the help of Tarun Bathija, who holds a BA of Arts, Media and Communication from Webster University, Geneva, Switzerland, and who was contracted for one year, IUFRO accounts for **Twitter**, **Facebook** and a **Blog** were created and **podcasts** and **videos** were placed in iTunes and YouTube, respectively.

With the purpose of promoting the IUFRO 2010 World Congress themes, a series of **news releases** was started in autumn 2009 with the help of Bob Burt, a retired science journalist formerly employed with Natural Resources Canada.

At the end of the year IUFRO launched the **Featured IUFRO Member section** on its homepage. This section is designed to introduce IUFRO Member Organizations to our website visitors.

#### **Photo on page 22:**

IUFRO/EFI Learning Event at Forest Day 3 in Copenhagen, Denmark, by Alexander Buck, IUFRO Headquarters



# www.iufro.org

## /membership/benefits/

### IUFRO Board

#### IUFRO Senior Officeholders:

*President:* Don K. Lee, Korea (Rep)  
*Vice President Science:* Niels Elers Koch, Denmark  
*Vice President Policy:* John Innes, Canada  
*Immediate Past President:* Risto Seppälä, Finland  
*Executive Director:* Peter Mayer, Austria  
*Finance Officer:* N.N.

#### Division Coordinators:

*Division 1:* Björn Hånell, Sweden  
*Division 2:* Baillian Li, USA  
*Division 3:* Hans Rudolf Heinemann, Switzerland  
*Division 4:* Margarida Tomé, Portugal  
*Division 5:* David Cown, New Zealand  
*Division 6:* Perry J. Brown, USA  
*Division 7:* Mike Wingfield, South Africa  
*Division 8:* Alex Mosseler, Canada

#### General IUFRO Board Members:

Vitor Afonso Hoeflich, Brazil; Roberto H. Ipinza, Chile; Shirong Liu, China; Heinrich Spiecker, Germany; Tohru Nakashizuka, Japan; Su See Lee, Malaysia; Mohammed Ellatifi, Morocco; Piotr Paschalis-Jakubowicz, Poland; Victor K. Teplyakov, Russia

#### Other IUFRO Board Members:

*FAO Representative on IUFRO Board:*  
 Jan Heino, FAO  
*IUFRO Congress Organizing Committee Chair:*  
 Jung-Hwan Park, Korea (Rep)  
*IUFRO Headquarters Host Country Representative:*  
 Gerhard Mannsberger, Austria

### Coordinators

#### Task Forces:

*Communicating Forest Science:*  
 Daniela Kleinschmit, Germany  
*Forests and Carbon Sequestration:* Werner Kurz, Canada  
*Forests and Human Health:* Hannu Raitio, Finland  
*Forests and Water Interactions:* N.N.  
*Illegal Logging and FLEGT (Forest Law Enforcement, Governance and Trade):* Andreas Ottitsch, United Kingdom  
*Improving the Lives of People in Forests:*  
 Carol Colfer, Indonesia  
*Traditional Forest Knowledge:* John Parrotta, USA

#### Special Programmes, Projects and Initiatives:

*IUFRO Special Programme for Developing Countries (SPDC):* Michael Kleine, Austria  
*SilvaVoc Terminology Project:*  
 Renate Prüller, Austria  
*IUFRO World Forests, Society and Environment (WFSE):*  
 Gerardo Mery, Finland  
*Global Forest Information Service (GFIS):*  
 Eero Mikkola, Finland  
*CPF Global Forest Expert Panels (GFEP):*  
 Alexander Buck, Austria

### IUFRO Headquarters Publications - 2009

#### IUFRO World Series 20-IV

Keep Asia Green Volume IV "West and Central Asia"

#### IUFRO World Series 22

Adaptation of Forests and People to Climate Change. A Global Assessment Report.

#### IUFRO World Series 23

Traditional Forest-Related Knowledge and Sustainable Forest Management in Africa: Conference Papers

#### IUFRO World Series 24

Asia and the Pacific Forest Health Workshop: Forest Health in a Changing World

#### IUFRO Occasional Paper 23

Forest Agencies' Early Adaptations to Climate Change

#### IUFRO News Vol. 38, issues 1 – 11/12 (2009)

Noticias de IUFRO – 2 issues

14 Scientific Summaries

IUFRO Annual Report 2008

### Editorial:

#### Annual Report 2009:

Copyright by IUFRO, Vienna, 2010

Edited by Gerda Wolfrum, IUFRO Headquarters  
 Vienna, Austria

#### Printed in Austria by:

Druckerei Ferdinand Berger & Söhne Ges.m.b.H.  
 Wiener Straße 80, 3580 Horn

#### Cover illustration drawn by:

Jakob Felix Kemethofer (aged 7), autumn tree

Readers are encouraged to copy and distribute this Annual Report or part of it indicating the citation:

IUFRO (ed) 2010: Annual Report 2009,  
 Vienna, IUFRO Headquarters, 24 pp.

**Photo:** Management Committee meeting study tour in Malaysia,  
 by Alexander Buck, IUFRO Headquarters





## **Our Mission is ...**

*to promote global cooperation in forest-related research and to enhance the understanding of the ecological, economic and social aspects of forests and trees; as well as to disseminate scientific knowledge to stakeholders and decision-makers and to contribute to forest policy and on-the-ground forest management.*

**[www.iufro.org](http://www.iufro.org)**