

# GFEP

## The Global Forest Expert Panels

Interconnecting Science and Policy

# GLOBAL FOREST EXPERT PANELS

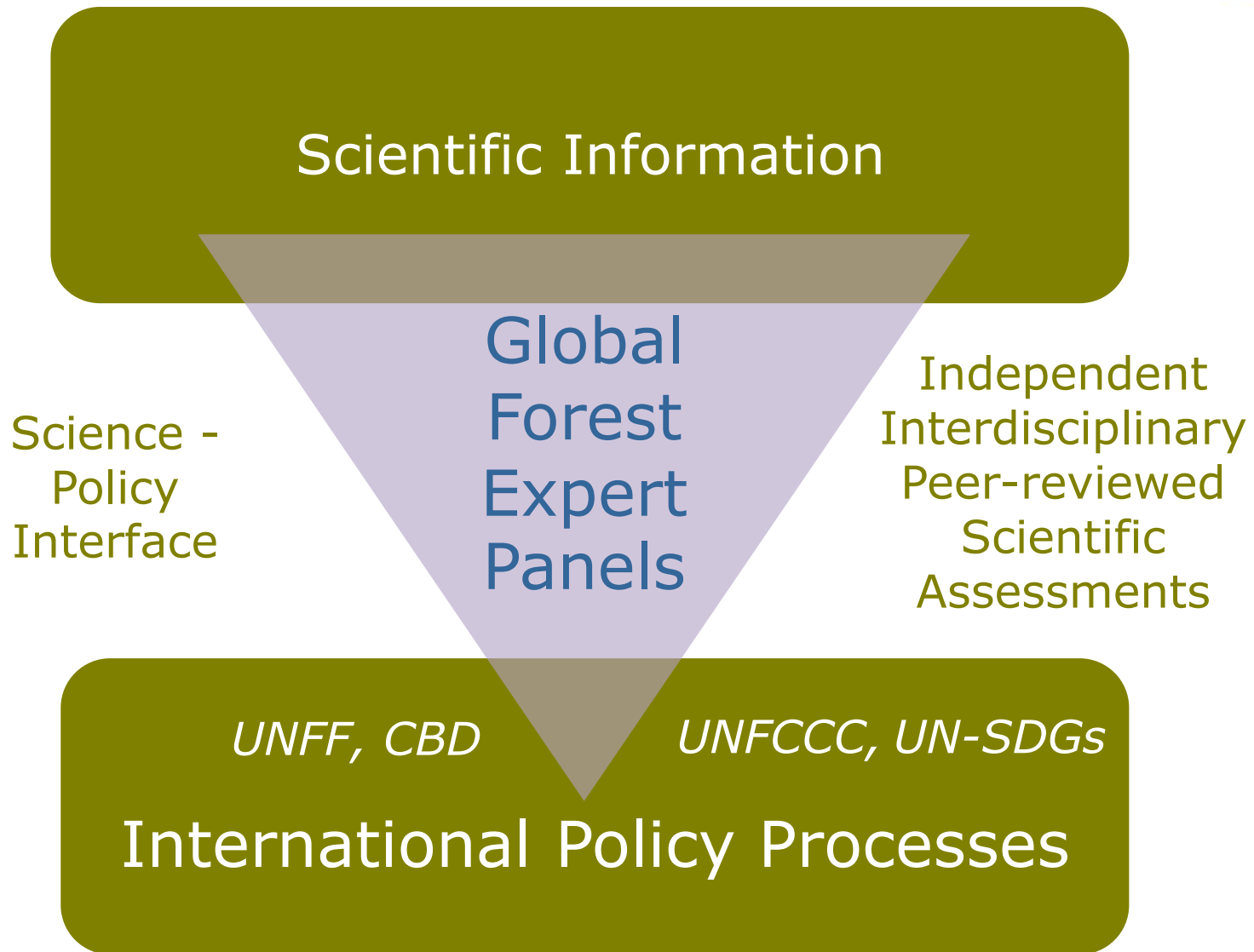
IUFRO-led initiative of the Collaborative Partnership on Forests (CPF) since 2006

Supports forest-related intergovernmental processes by producing assessment reports on emerging global issues of high concern



## CPF members:





# GFEP assessments - overview

---

- Assessments are undertaken by thematic **Expert Panels** – groups of internationally recognized scientific experts selected by the GFEP team, keeping in mind the scientific, regional and gender balance
- **Panel Members** - scientists serve as Coordinating Lead Authors (CLAs) and Lead Authors (LAs) of chapters; Contributing Authors may be involved as needed
- Scientific experts participate in their **personal capacity** and do not represent any organization or institution
- Expert Panels **meet physically** at least 2-3 times during the assessment
- No new research but assessment of **existing scientific literature and information** on given topic
- Publication of results in comprehensive peer reviewed **assessment reports** and '**policy briefs**' for decision- and policy-makers

# GFEP assessments - completed

---



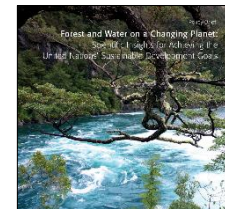
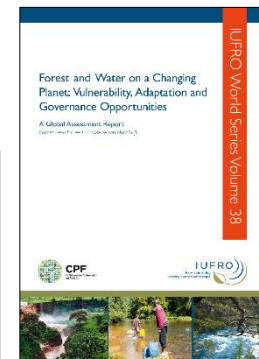
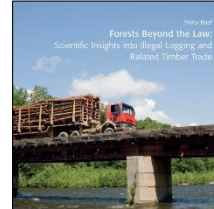
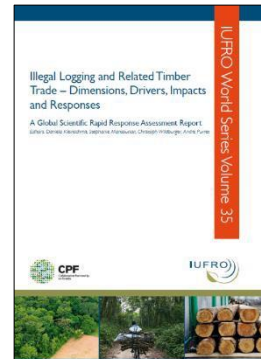
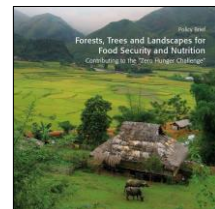
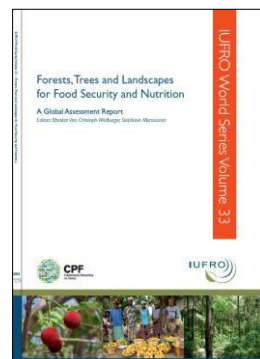
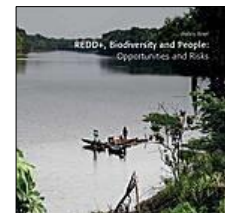
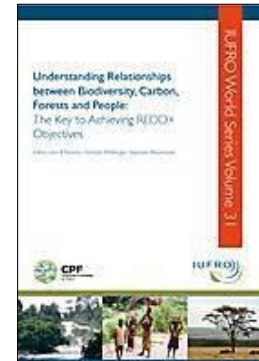
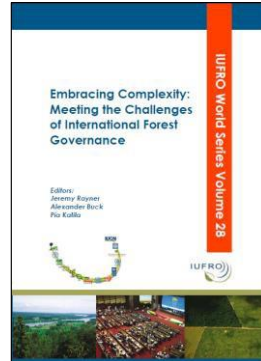
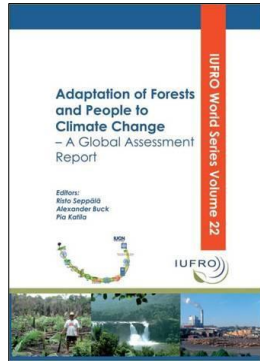
**Six scientific assessments** so far carried out by independent scientific expert panels

- **[Adaptation to Climate Change \(2009\)](#)**
- **[International Forest Regime \(2011\)](#)**
- **[Biodiversity, Forest Management and REDD+ \(2012\)](#)**
- **[Forests and Food Security \(2015\)](#)**
- **[Illegal Logging and Related Timber Trade \(2016\)](#)**
- **[Forests and Water \(2018\)](#)**

*All IUFRO-GFEP publications can be downloaded for free at:*

**<https://www.iufro.org/science/gfep/>**

# GFEP assessments - completed





- GFEP Expert Panels have triggered **multi-disciplinary approaches**:
  - Involvement of scientists from various disciplines
  - Increased collaboration with non-forest sectors
- No advocacy research but information basis **for policy options**
- Reports have been launched and study results have been disseminated within the framework of **global policy processes** (*UNFCCC, CBD, UNFF*)
- The publications have received considerable **international media uptake** worldwide (*e.g. by BBC Online, Conversation, Mongabay, Voice of America, UN News Centre, Reuters, Science Daily, Deutsche Welle, and many others*).

# GFEP assessments - outcomes

---

- The outcomes of the GFEP assessments have served as:
  - **Briefing documents** for negotiators at the global level (*i.e. UNFCCC, CBD, UN-SDGs, UNFF etc.*)
  - **Guidance for strategic policy development** (*e.g. for Global Environment Facility, GEF*)
  - Comprehensive, interdisciplinary and scientifically sound **information source for scientists and communicators**
  - **Teaching materials** for universities and courses



## **Biodiversity, Forest Management and REDD+ (2012)**

- Briefing of REDD+ negotiators at UNFCCC COP-18 in Doha
- The Expert Panel's work contributed to the discussions on REDD+ and biodiversity and was acknowledged in CBD decision XI/19
- Guidance to Global Environment Facility (GEF) in developing its SFM strategy in the GEF-6 replenishment process

## **Forests and Food Security (2015)**

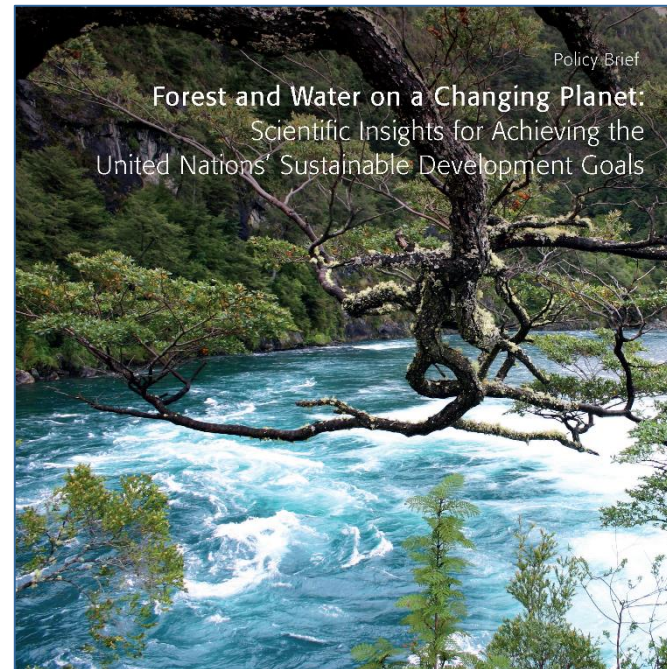
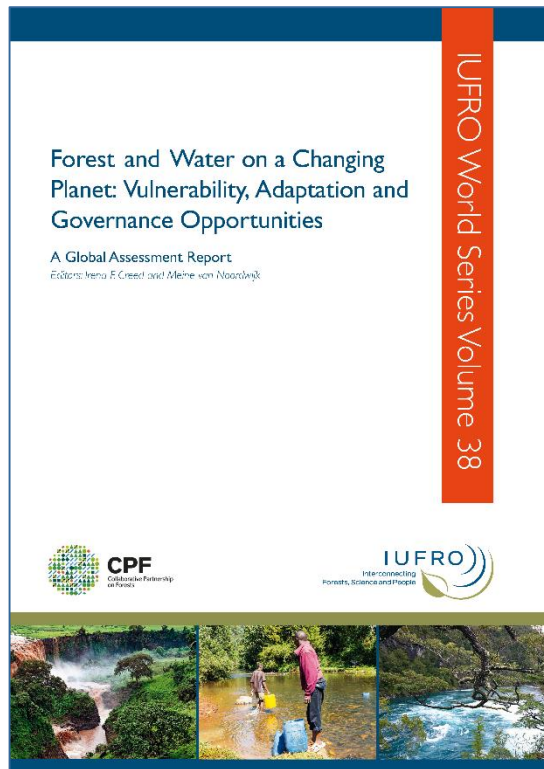
- The report served as a basis for the work of the High Level Panel of Experts on Food Security and Nutrition (HLPE) of the United Nations Committee on World Food Security (CFS)
- Contribution to discussions on SDG 2 on food security during UNFF-12 (May 2017). Three of the five panelists presenting in the session were members of the GFEP Expert Panel on Forests, Food Security and Nutrition.

## Illegal Logging and Related Timber Trade (2016)

- Presentation of assessment process at the CITES COP-17 during INTERPOL's 27th Wildlife Crime Working Group Meeting in Johannesburg, South Africa in October 2016
- Report and policy brief launched during High-Level Segment of the CBD COP-13 in Cancun, Mexico in December 2016; Policy Brief distributed to all the country delegations (187)
- CBD COP-13 formally recognized the need to address the problem of illegal logging and timber trade in the framework of the CBD - paragraph 57 of the adopted CBD decision XIII/3
- Presentation of findings of the report at the 11th meeting of the Asia-Pacific Economic Cooperation (APEC) Expert Group on Illegal Logging and Associated Trade (EGILAT) in February 2017

# Forest and Water on a Changing Planet: Vulnerability, Adaption and Governance Opportunities (2018)

*A Global Assessment Report*



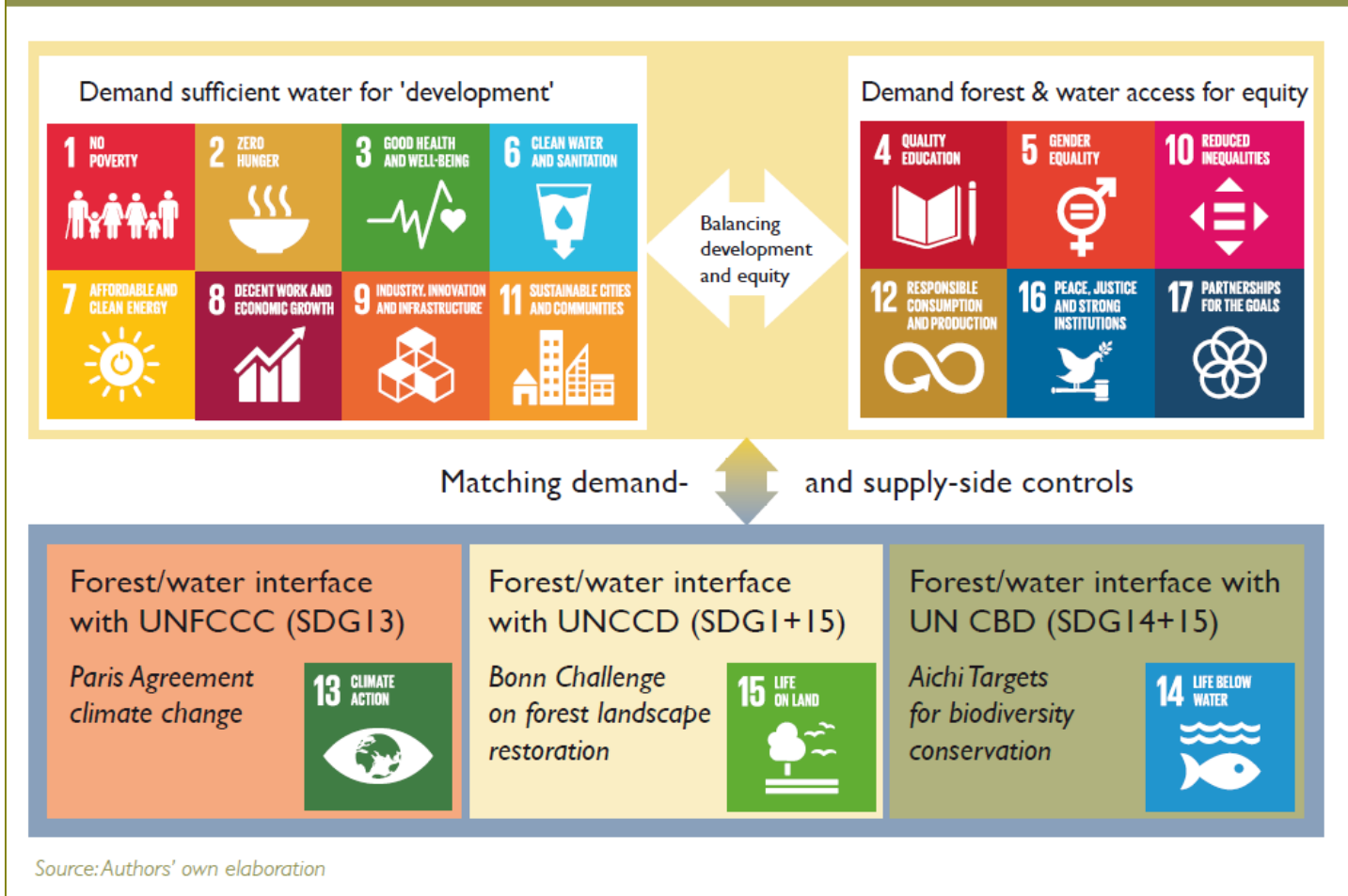
- GFEP Expert Panel on Forests and Water commenced work in early 2017
- Task: comprehensive global scientific assessment report on interactions between forests and water to inform relevant policy processes, especially the discussions on the 2030 Agenda and the SDGs
- Scientific Expert Panel involved 19 internationally renowned scientists from Canada, Indonesia, South Africa, Sweden, Spain, Kenya, Nepal, Australia, United States, Switzerland, United Kingdom and China ([List of Panel Members](#))
- In total, around 50 scientists from more than 20 countries contributed to the peer reviewed assessment report
- Launch of the report and policy brief during UN High-Level Political Forum on Sustainable Development (HLPF 2018) in New York, USA (9-18 July 2018)

# GFEP on Forests and Water

## Policy context:

Sustainable Development Goals (SDGs) in relation to forest/water relations

Figure 1.1





# GLOBAL RELEASE – 10 July 2018



## LAUNCH: Side-event during United Nations High-Level Political Forum on Sustainable Development (HLPF 2018)



[Photo by IISD/ENB | Natalia Mroz](#)

Global Forest Expert Panels (GFEP) • <https://www.iufro.org/science/gfep/>

# GLOBAL RELEASE – 10 July 2018

## LAUNCH: Side-event during United Nations High-Level Political Forum on Sustainable Development (HLPF 2018)



[Photos by IISD/ENB](#) | Natalia Mroz

**Official coverage of the launch by IISD/ENB:**

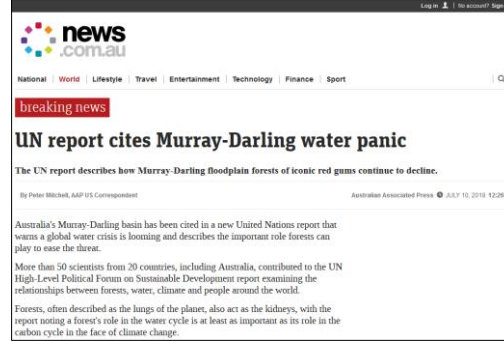
**<http://enb.iisd.org/hlpf/2018/side-events/10jul.html>**

Global Forest Expert Panels (GFEP) • <https://www.iufro.org/science/gfep/>



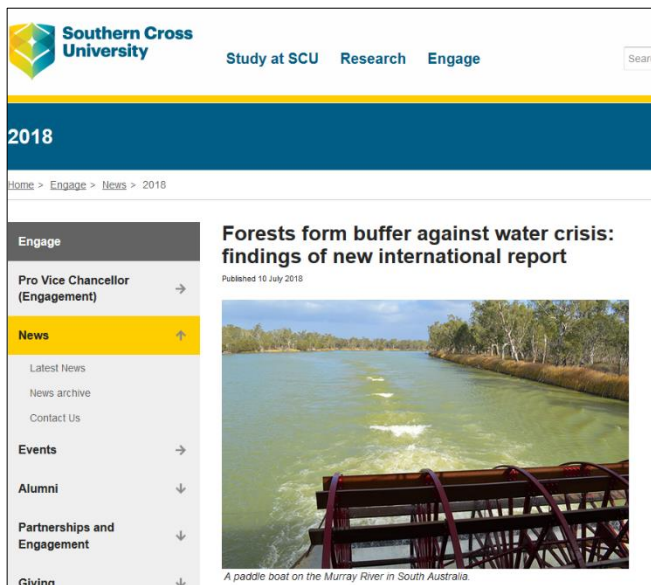
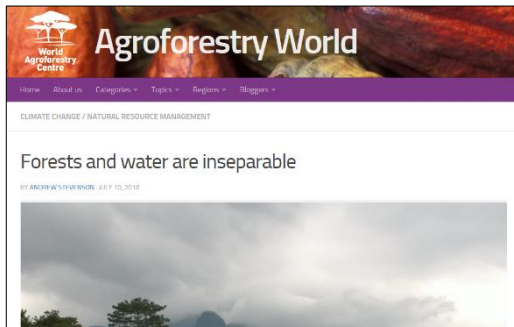
# GLOBAL RELEASE – Media uptakes

## The press releases and the study were picked up by several international news portals and media (few examples):



# GLOBAL RELEASE – Media uptakes

The news were shared by many of our partners around the world:





# GLOBAL RELEASE – Media uptakes

## Members of GFEP were giving interviews on television and radio:

UN Web TV press conference (United Nations) July 11, 2018 "2018-HLPF Side Event: International Union of Forest Research Organizations (IUFRO) on "Forests and Water on a Changing Planet: Scientific Insights for Building Sustainable and Resilient Societies"



FAO INTERVIEW WITH GFEP CO-CHAIR PROF. MEINE VAN NOORDWIJK DURING COFO-24 IN ROME, ITALY



INTERVIEW OF CGTN AFRICA WITH MEINE VAN NOORDWIJK



INTERVIEW WITH PROF. CAROLINE A. SULLIVAN ON ABC RADIO IN AUSTRALIA (11 JULY 2018)



The Australian Broadcasting Corporation (ABC) interviewed GFEP assessment on Forests and Water, Prof. Caroline A. Sullivan on 11 July 2018. In connection to the recent launch of the new report on Forests and Water, ABC radio in Australia approached Prof. Sullivan, to give a brief overview of relevance in the Australian context. Prof. Sullivan works in the School of Environmental and Atmospheric Sciences at the University of Western Australia (UWA) as the Professor of Environmental Policy and as the Establishment Director of the National Centre for Environmental and Estuarine Science (CoCoPS).

[Listen to the podcast](#)

INTERVIEW WITH DR. EMMA ARCHER IN THE JOHN MAYTHAM SHOW ON RADIO CAPETALK (SOUTH AFRICA)



The John Maytham Show on radio CapeTalk on 11 July 2018 featured an interview with Dr. Emma Archer (CSIR/WITS), one of the Coordinating Lead Authors of the GFEP assessment on Forests and Water. Dr. Archer is a Chief Researcher in the Council for Scientific and Industrial Research (CSIR) in South Africa and a scientist at the Global Change Institute, University of the Witwatersrand, Johannesburg (WITS). She served as one of the Coordinating Lead Authors in the GFEP assessment on Forests and Water. In this radio interview, she explains the issue of "rainbow water shortages" and the interlinkages between forests and water in the context of South Africa.

<http://www.capetalk.co.za/articles/311219/one-of-our-biggest-issues-is-alien-trees-dr-emma-archer>

- Contribution to the 13<sup>th</sup> session of the United Nations Forum on Forests (UNFF-13) in May 2018 in New York, USA. GFEP Panel Members were invited to the *"Panel Discussion on the Contribution of Forests to the Achievement of the SDGs and Transformation towards Sustainable and Resilient Societies"*.
- A Coordinating Lead Author of GFEP was tasked by the UNFF to produce a background study on "forests and water", presented at the UNFF-13. The study was mainly based on the GFEP report.
- Report and policy brief were launched at a side-event during UN High-Level Political Forum on Sustainable Development (HLPF 2018) on 10 July 2018 in UN HQ in New York, USA.
- Presentations at the Expert Group Meeting (EGM) on *"Sustainable Development Goal 15: Progress and Prospects"* in May 2018; a pre-HLPF event on forests entitled *"Forest-based Transformation towards Sustainable and Resilient Societies: Lessons Learned and Success Stories"* in July 2018; and a high-level session at the 24th Session of the FAO Committee on Forestry (COFO 24) in July 2018.

# GFEP on Forests and Water

## DONORS AND SUPPORTERS:

Funding support for this publication was provided by the Ministry for Foreign Affairs of Finland (MFA), the United States Forest Service (US-FS), the Austrian Federal Ministry of Sustainability and Tourism (BMNT) and the World Bank Group/PROFOR:



With support from  
Finland's development  
cooperation



 Federal Ministry  
Sustainability and Tourism



THE WORLD BANK  
IBRD • IDA | WORLD BANK GROUP



PROFOR  
INNOVATION AND ACTION  
FOR FORESTS

*Special thanks goes to the member organizations of the Collaborative Partnership on Forests (CPF) for their in-kind contributions and overall guidance.*

*Particular thanks to the Food and Agriculture Organization of the United Nations (FAO), the University of Cambridge and the University of Leeds for hosting expert meetings.*

## **GFEP Team:**

- Christoph Wildburger (GFEP Coordinator) [wildburger@iufro.org](mailto:wildburger@iufro.org)
- Andre Purret (GFEP Project Manager) [purret@iufro.org](mailto:purret@iufro.org)
- Eva-Maria Schimpf (GFEP Administration) [schimpf@iufro.org](mailto:schimpf@iufro.org)
- Gerda Wolfrum (GFEP Communication) [wolfrum@iufro.org](mailto:wolfrum@iufro.org)

## **Global Forest Expert Panels (GFEP) official website:**

<https://www.iufro.org/science/gfep/>

