

Community forest restoration scenarios

Wil de Jong

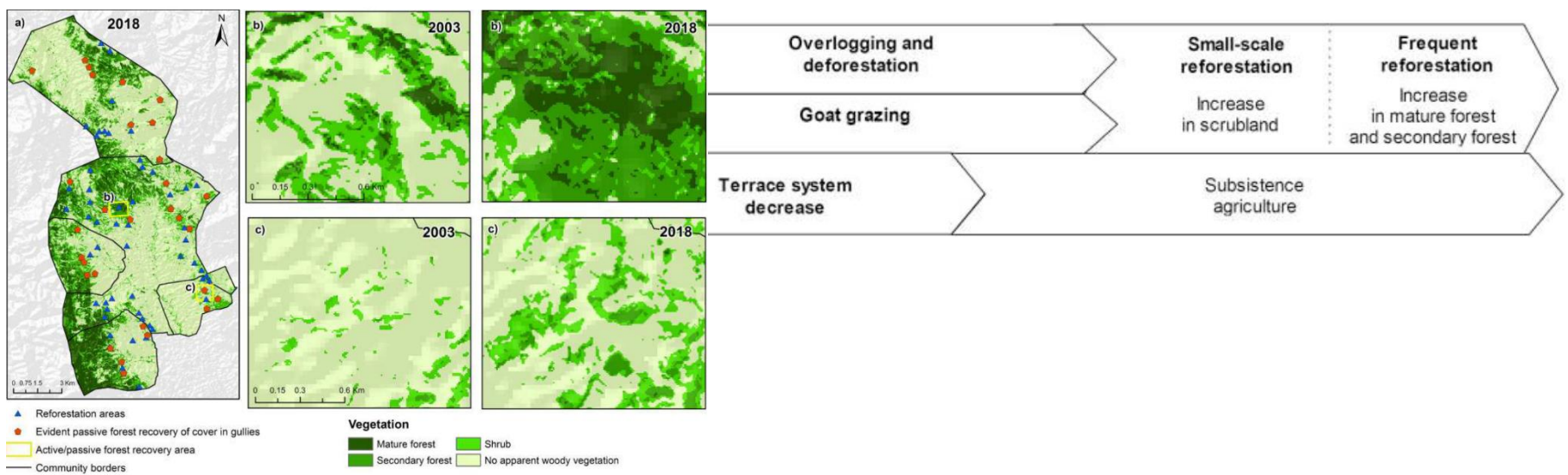
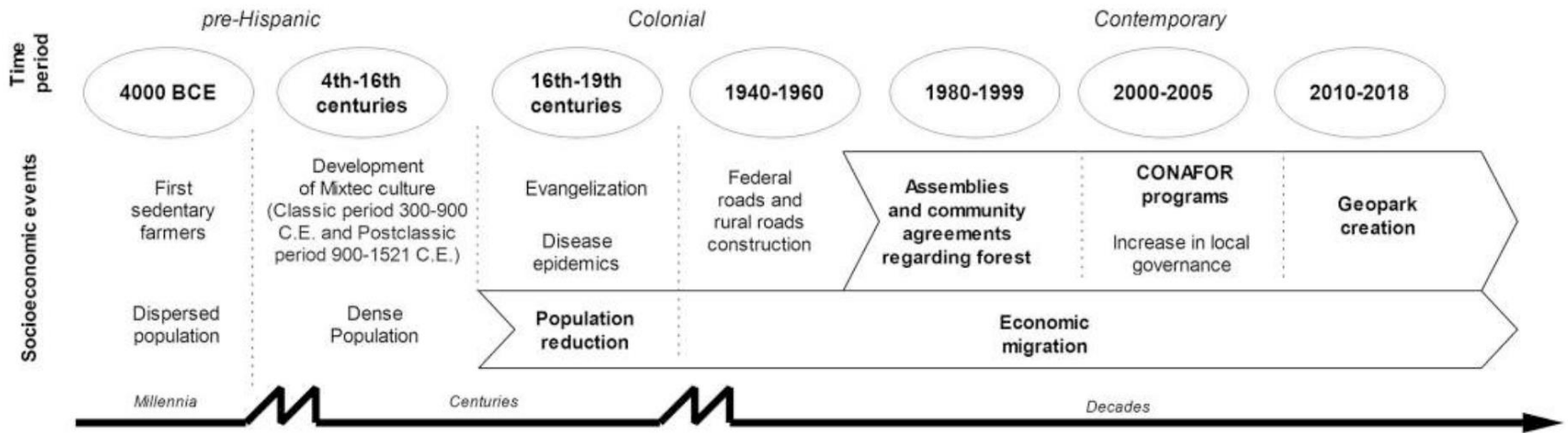


IUFRO SPECIAL PROJECT
WORLD FORESTS, SOCIETY AND ENVIRONMENT
IUFRO WFSE

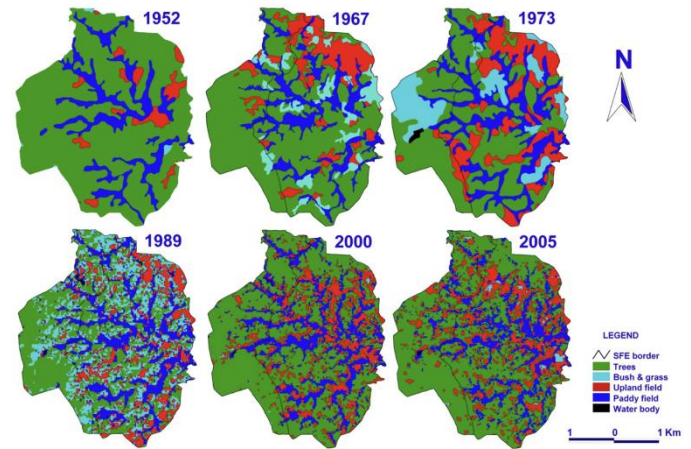
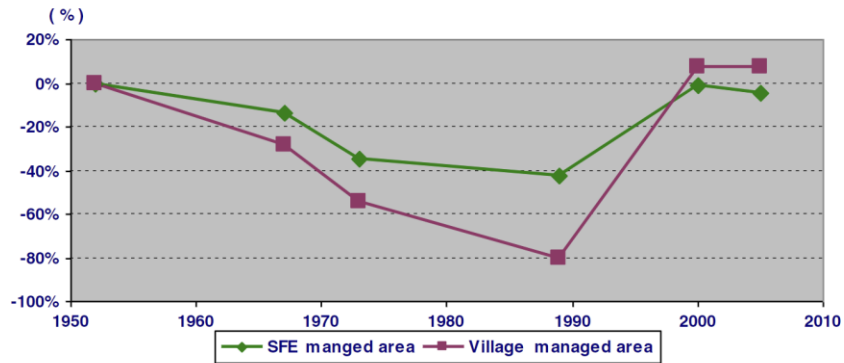


Two studies

- ❑ Understanding drivers of local forest transition in community forests in Mixteca Alta, Oaxaca, Mexico
 - J.A. Hernandez-Aguilar, E. Duran, W. de Jong, A. Velazquez, G. Perez-Verdín. *Forest Policy and Economics* 131, 102542
- ❑ Forest transition in Vietnam: A case study of Northern mountain region
 - Dao MinhTruong, M. Yanagisawa, Y Kono. *Forest Policy and Economics* 76: 72-80



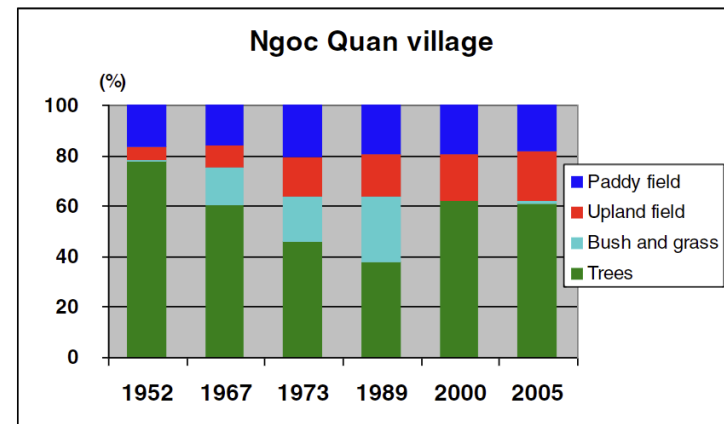
Five villages Mixteca alta Mexico



Reconstructed population and population density of Ngoc Quan village.

Ngoc Quan	1952	1967	1973	1989	2000	2005
Population (person)	1099	2539	3014	4724	5606	6039
Population density (person/km ²)	77	179	212	332	398	425

Source: Truong et al. (2008).



Ngoc Quan village, Vietnam

Commonalities and insights

- ❑ Two cases, long trajectory of land use and corresponding land cover change resulting in tree and forest cover increase
- ❑ Multiple drivers change over time – externally facilitated tree planting support/projects occurred, but not the dominant driver
- ❑ Tree planting projects (integrated tree planting and development projects) lead to sustained forest cover when in sink with land use and livelihood transitions
- ❑ Align forest restoration support/ assistance/ interventions with land use/ land cover/ livelihood trends

