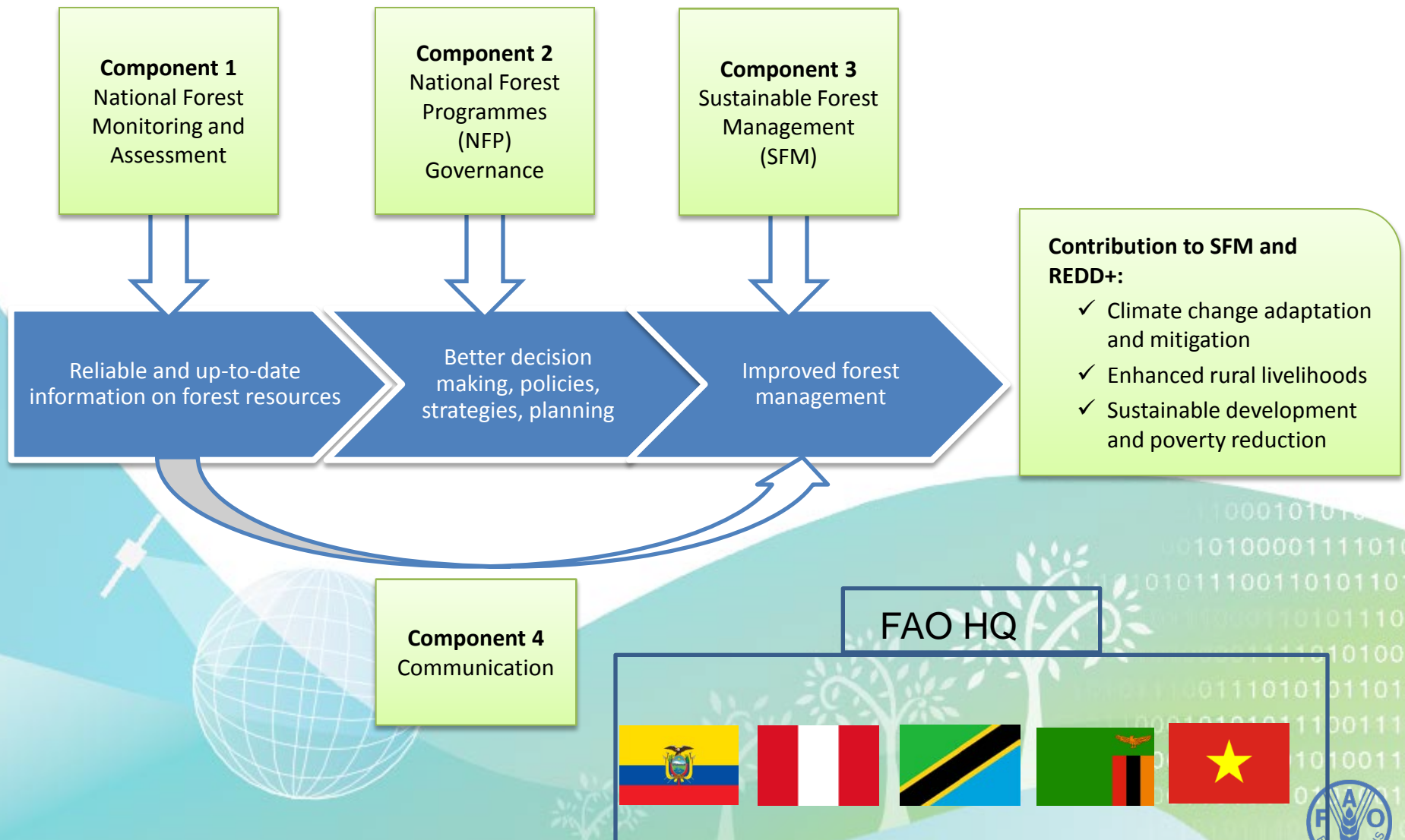




Sustainable Forest Management in a Changing Climate
FAO – Finland Forestry Programme

Anssi Pekkarinen
FAO Firestry
Helsinki, March 1 2016

BETTER INFORMATION FOR SUSTAINABLE FOREST MANAGEMENT



Component 1
National Forest
Monitoring and
Assessment

Information need assessment

Methods and tools

Capacity development



Implementation

Field inventory

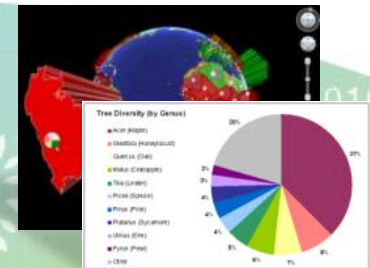
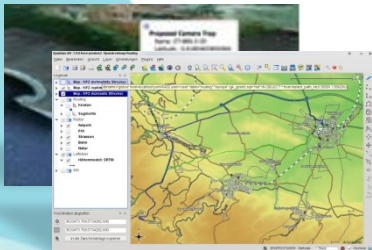
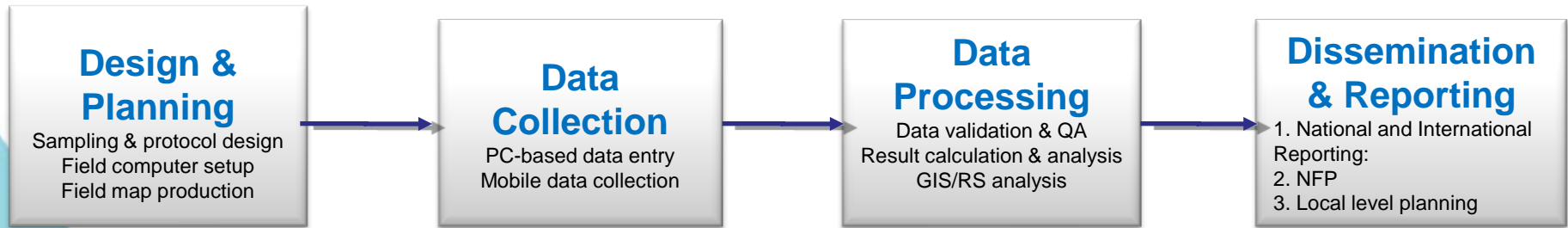
Socio-economic
survey

Mapping

Household surveys, key informants,
institutions, governance

Open Foris Initiative

Enabling multi-purpose forest assessment, monitoring, and reporting



Component 2
National Forest
Programmes
(NFP)
Governance

Component 1
National Forest
Monitoring and
Assessment



Collection and analysis of SE data

Review and revision of NFPs

Normative Guidance on SE monitoring

Forestry module for WB's Living
Standards Measurement Study –
Integrated Surveys on Agriculture
(LMSS-ISA)*



*in collaboration with PROFOR, CIFOR, IFRI, WB

Component 3
Sustainable Forest
Management
(SFM)



Component 2
National Forest
Programmes
(NFP)
Governance

Normative guidance

- Climate Change for Forest Managers
- Climate Change for Forest Policy Makers
- Guide to implementation of phytosanitary standards in forestry

Other

- Community forest management in Peru
- Wildfires in Tanzania



Component 1
National Forest
Monitoring and
Assessment



Component 4
Communication

Component 3
Sustainable Forest
Management
(SFM)



Regional communicators' networks trained on communication tools and techniques
Video productions, news articles, press releases, etc.

Component 1
National Forest
Monitoring and
Assessment



Component 2
National Forest
Programmes
(NFP)
Governance

Main achievements I

- Ecuador
 - In total 1893 field plots were measured
 - 600 hectares sampled.
 - Socioeconomic method was developed and tested
 - Long-term monitoring programme designed
 - First national biomass maps of Ecuador and remote sensing based deforestation estimates produced
 - Monitoring unit within the Ministry of Environment

Main achievements II

- Peru
 - Methodology developed and endorsed
 - Field inventory initiated
 - Draft socioeconomic method was developed and tested
 - Capacity development and publications
 - SERFOR supported
 - CFM modules



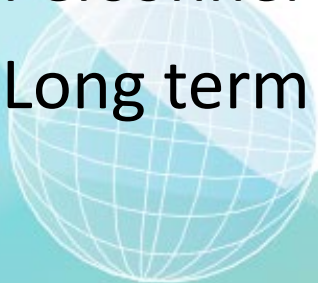
Main achievements III

- Viet Nam
 - NFI method developed
 - Capacity development in inventory and mapping
 - Framework for long term monitoring of the forestry resources established with LUKE (Metla).
 - Method for socioeconomic and governance monitoring has developed



Lessons learned

- Capacity
 - Development
 - Sustaining
 - Critical mass
- Institutionalization
 - Changes in government structure
 - Personnel
 - Long term financing



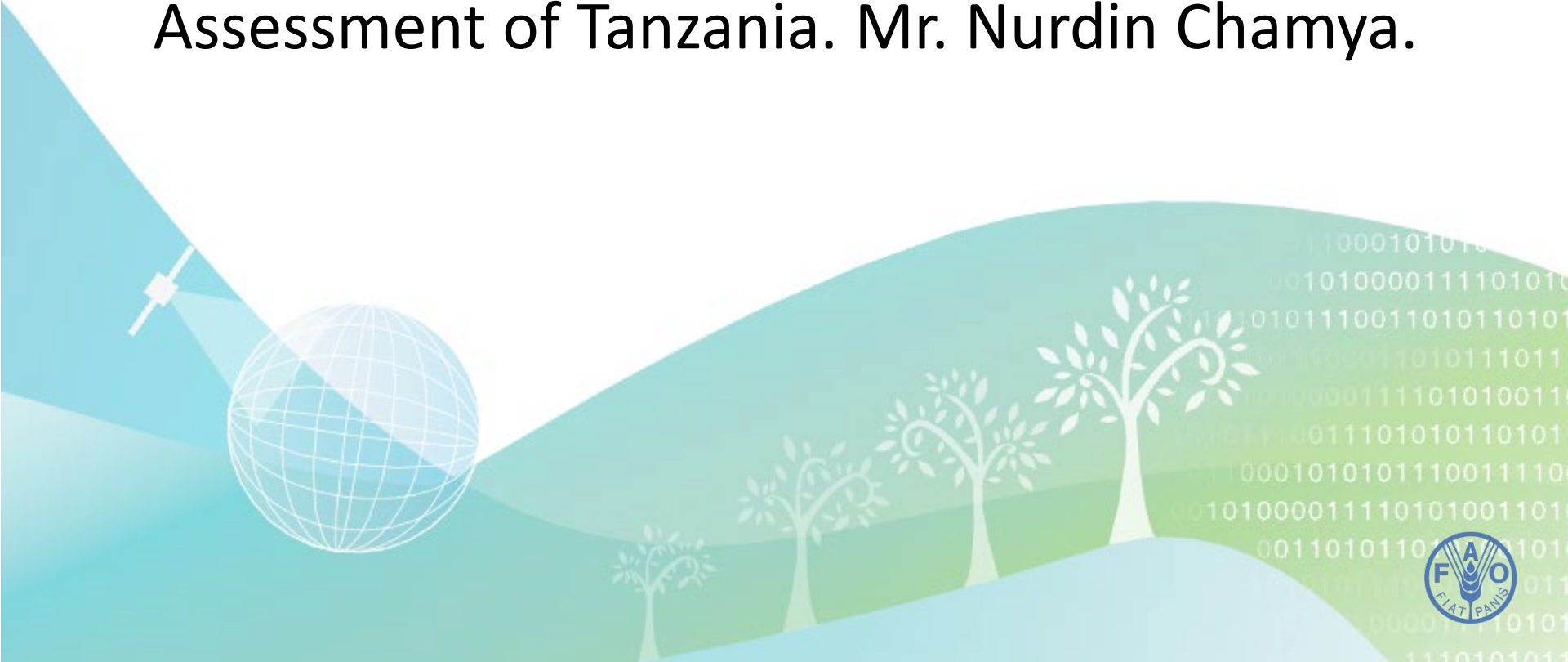
Lessons learned

- From data to information
 - Restricted / Open access to data
 - How to read and use forest data and information
 - Accessing results
- KISS principle



Country presentations

- Integrated Land Use Assessment II of Zambia. Mr. Mindenda Pande
- National Forest Resources Monitoring and Assessment of Tanzania. Mr. Nurdin Chamy.



Thank you for your attention!



This work was realized with
financial support of Finland

