

The
Global Network
for Forest
Science
Cooperation

The vision of IUFRO is to be the global voice of forest science promoting a sustainable future of forests and society.

MISSION

IUFRO advances research excellence and knowledge sharing, and fosters development of science-based solutions to forest-related challenges for the benefit of forests and people worldwide.

How to Get Involved?

- Visit our website iufro.org
- Look for IUFRO **UNITS** you are interested in
- Get in **CONTACT** with IUFRO officeholders
- Learn of and announce IUFRO co-sponsored **EVENTS**
- Read and contribute to IUFRO **PUBLICATIONS**
- Communicate and publish news in IUFRO **MEDIA**
- Establish a **PARTNERSHIP** with IUFRO
- Become a **MEMBER** — become an officeholder!

Follow us on social media and listen to our podcast!



more than
15,000
scientists

250
research units

630
member organizations

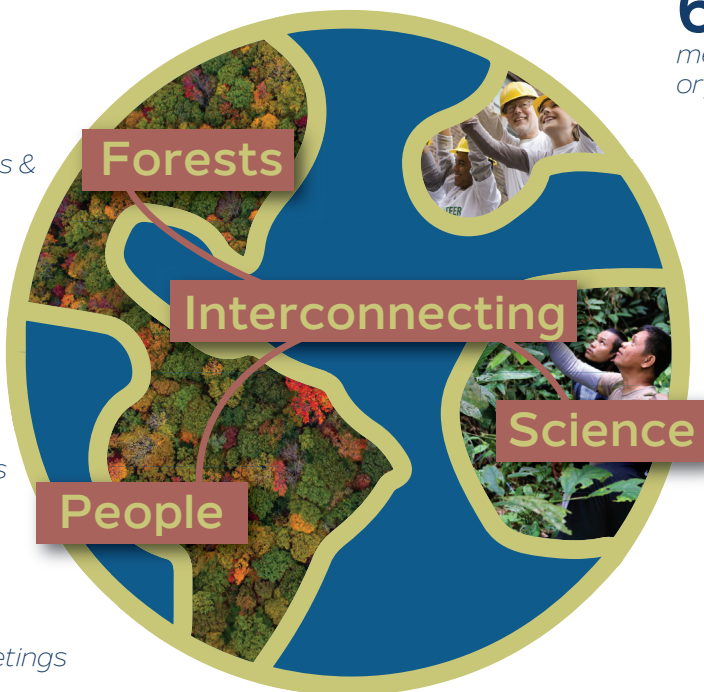
5
programmes & projects

700
voluntary coordinators

70-80
yearly meetings

115
countries

established in
1892



in f @ X | iufro.org





What IUFRO is

The International Union of Forest Research Organizations, IUFRO, is an independent, non-profit, open and unique scientific network. IUFRO fosters global collaboration for people and organizations with a research interest in and a focus on everything related to forests, trees and forest products. And it promotes a sustainable future for forests and society.

IUFRO offers opportunities to meet, work together, exchange ideas, access information and present findings. IUFRO's global platform interconnects forests, science and people, thus fostering scientific excellence and increasing research visibility.



How IUFRO works

IUFRO provides a diverse thematic structure for forest-related research. Within this structure scientists collaborate on a voluntary basis.

IUFRO addresses research needs and priorities of its members and stakeholders, including policy- and decision-makers, practitioners, industry and civil society.

You can join any of the 9 scientific Divisions, over 60 Research Groups, more than 180 Working Parties. IUFRO Task Forces are established on a temporary basis to advance interdisciplinary cooperation for example, on forest education, forests and water, health, bioeconomy, amongst others.

IUFRO Divisions

Nine permanent Divisions cover key forest research fields. Within the Divisions, Research Groups and Working Parties address specific research topics.

- D1** Silviculture
- D2** Physiology and Genetics
- D3** Forest Operations Engineering and Management
- D4** Forest Assessment, Modelling and Management
- D5** Forest Products
- D6** Social Aspects of Forests and Forestry
- D7** Forest Health
- D8** Forest Environment
- D9** Forest Policy and Economics

IUFRO-SPDC, the Special Programme for Development of Capacities, has been expanding and fostering forest research capacities in economically disadvantaged countries since 1983. IUFRO-SPDC offers training and mobility opportunities and is engaged in thematic networking, e.g., in the field of forest landscape restoration (FLR).

IUFRO's Science-Policy Programme (SciPol) provides a mechanism for effectively communicating information and scientific expertise to governments and intergovernmental processes related to forests and trees. It mobilizes and synthesizes relevant scientific expertise to contribute to policy processes.

IUFRO's Special Project on World Forests, Society and Environment (IUFRO-WFSE) is an open, global network of scientists, experts and practitioners. It provides an independent platform for broad participation and collaboration.

The **IUFRO Directors' Forum** (DF) discusses management-related issues of IUFRO member organizations.

www.iufro.org
office@iufro.org
Marxergasse 2,
1030 Vienna, Austria

